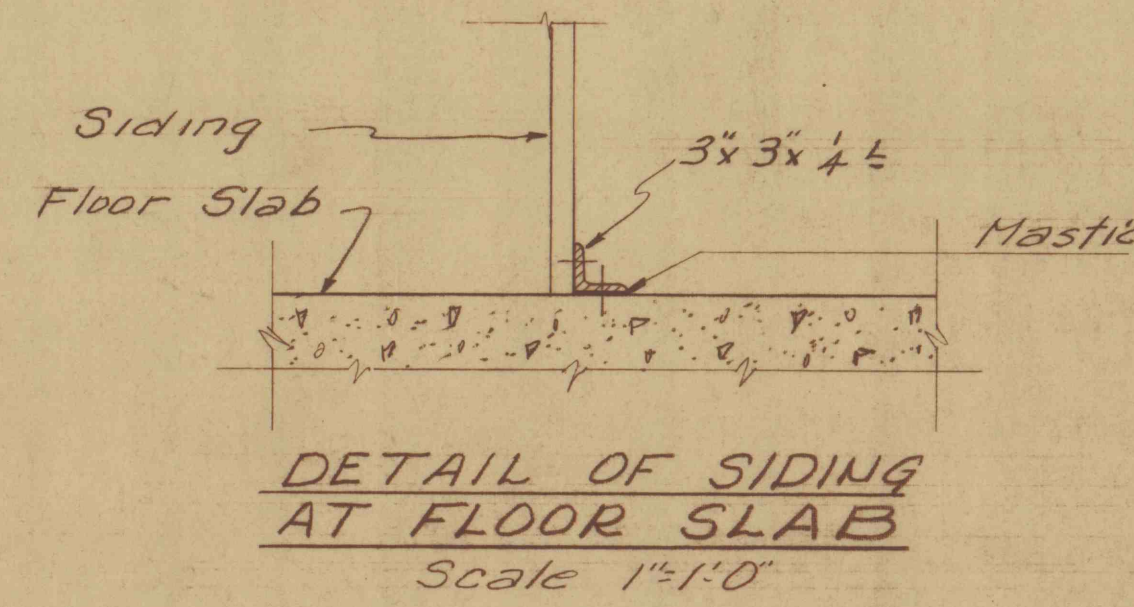
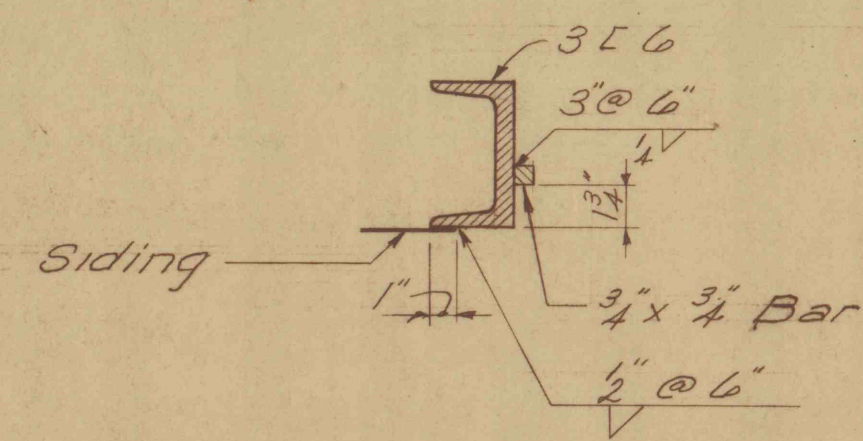


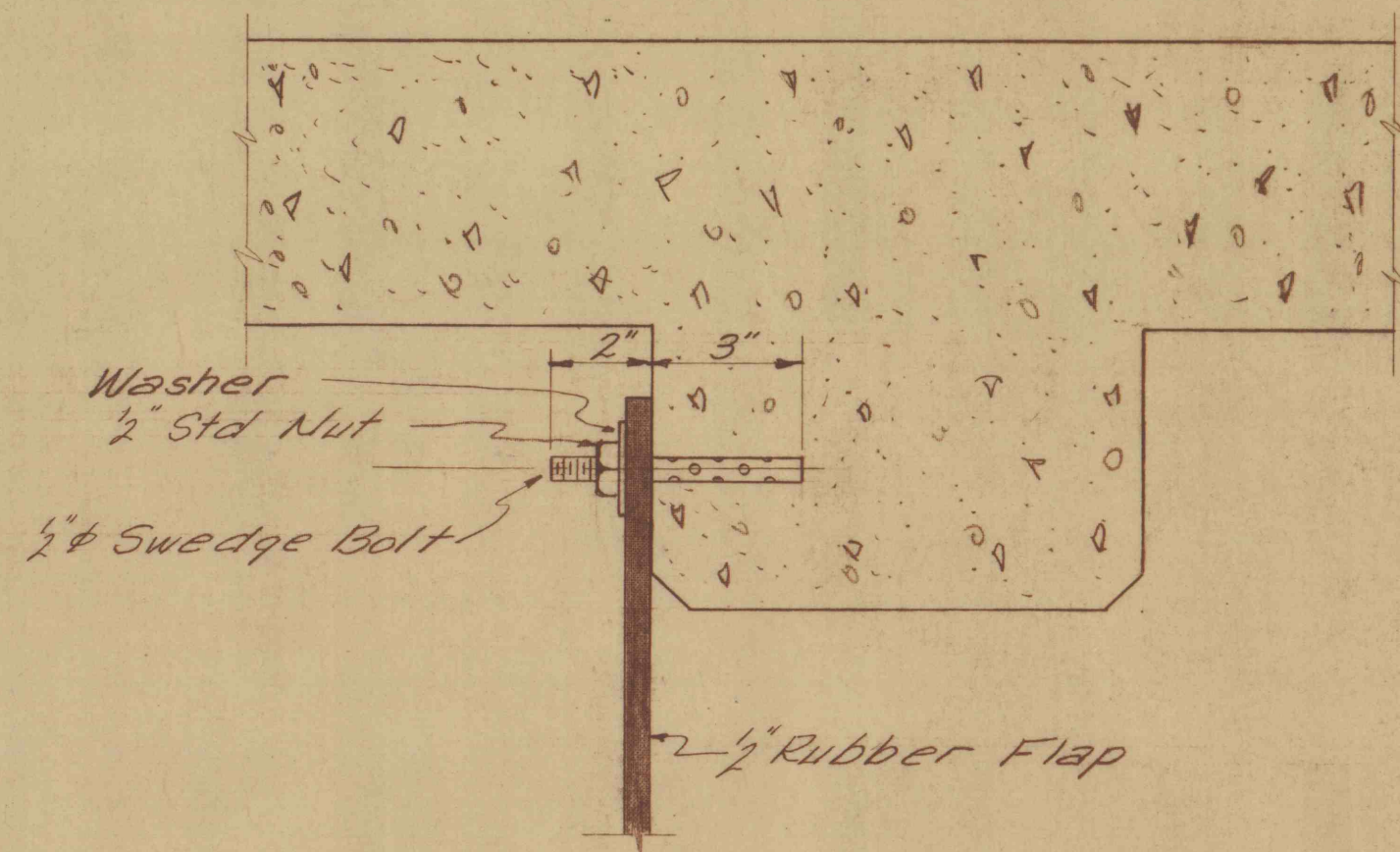
DETAIL OF RUBBER FLAP AT EACH END OF SLAB



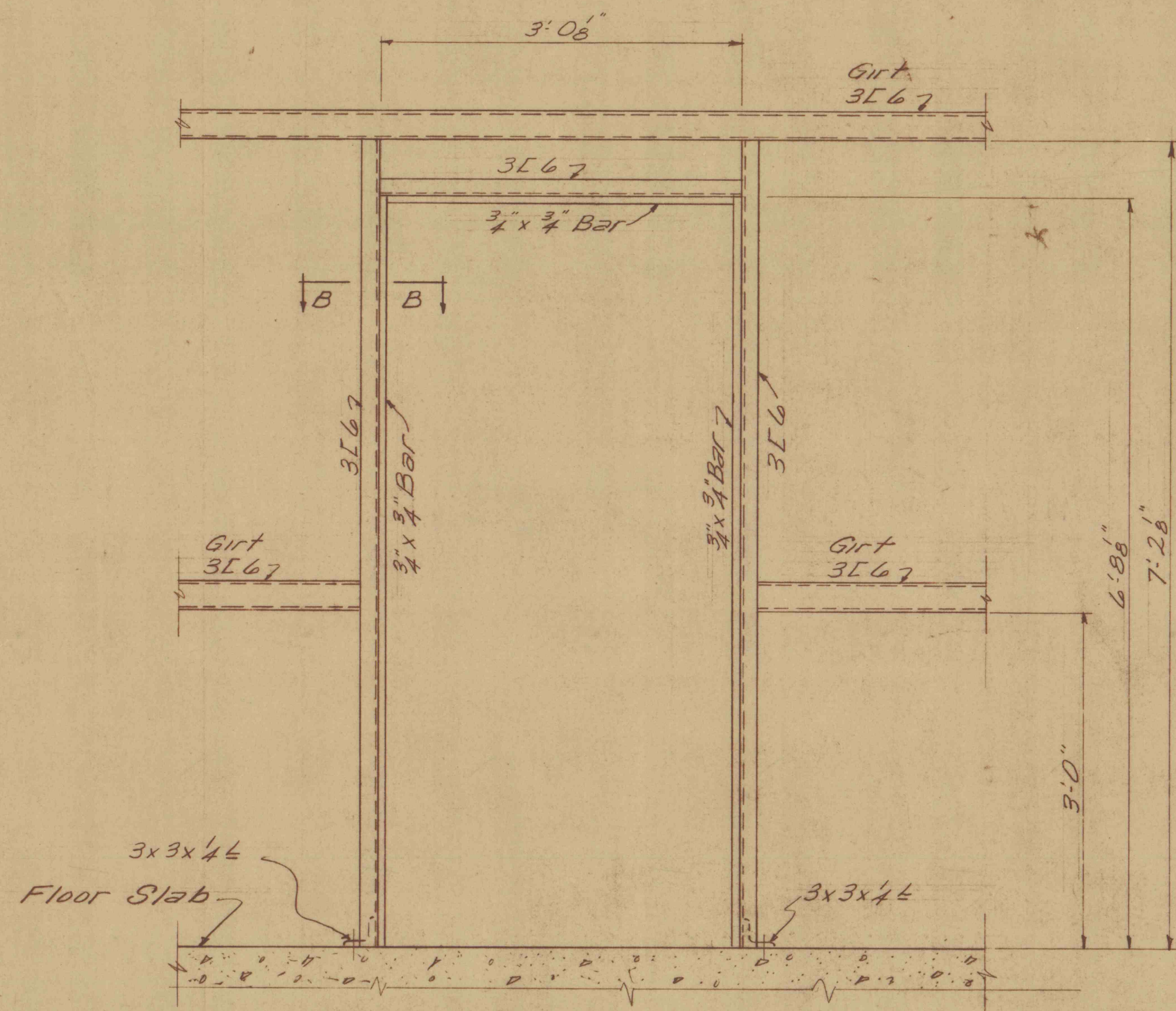
DETAIL OF SIDING AT FLOOR SLAB
Scale 1 1/2"=1'-0"



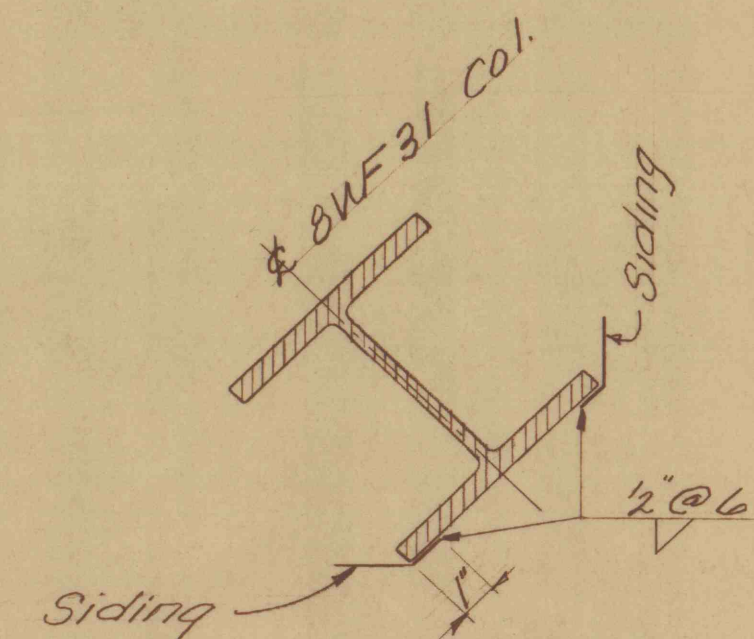
SECTION "B-B"
Scale 3"=1'-0"



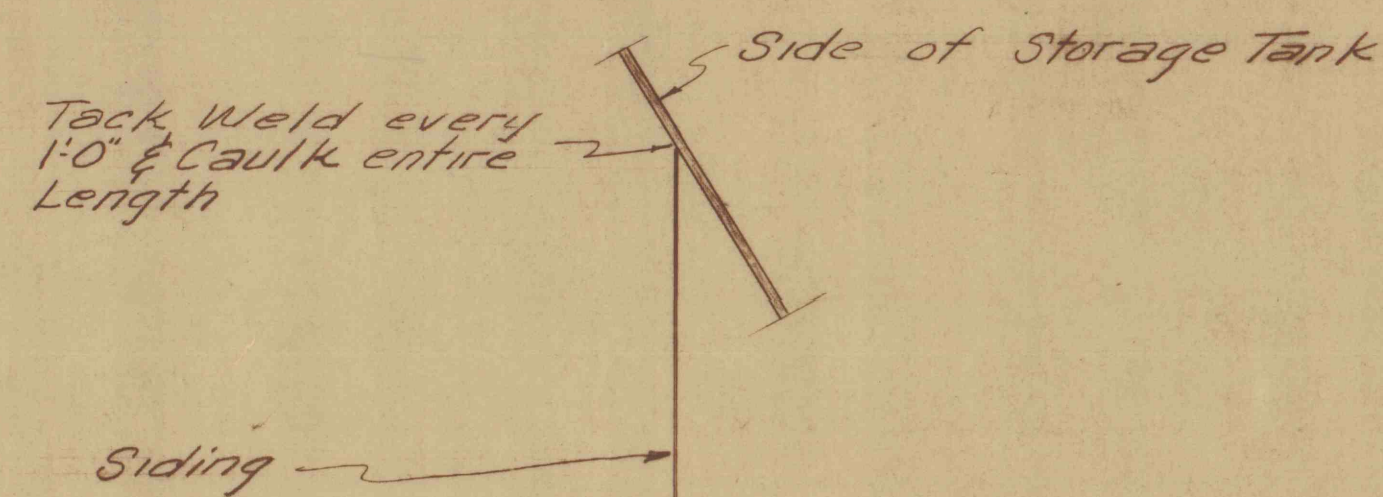
SECTION "A-A"
Scale 3"=1'-0"



DOOR BUCK
Scale: 1 1/2"=1'-0"



DETAIL OF SIDING AT COL.
No Scale



DETAIL OF SIDING AT STORAGE TANK
Scale 3"=1'-0"

REVISIONS	
SYMBOL	CORRECTIONS

APPROVALS	
APPROVED	<i>[Signature]</i>
DIRECTOR - BUREAU OF ENGINEERING & CONSTRUCTION	
APPROVED	<i>[Signature]</i>
ENGINEER - BUREAU OF ENGINEERING & CONSTRUCTION	
SUPERVISING	<i>[Signature]</i>
FOR DEPT. OF MINES & MINERALS SEC'S.	
SUBMITTED BY	<i>[Signature]</i>
	ENG'R

CHECKED BY			
ARCH.	CIVIL & STRUCT.	MECH.	ELECT.
	<i>[Signature]</i>		

PROJECT NO. S.L. 1061

DETAILS

MINE DRAINAGE TREATMENT
SANDY RUN LUZERNE CO., PENNSYLVANIA

BUREAU OF ENGINEERING & CONSTRUCTION
DEPARTMENT OF PROPERTY & SUPPLIES

DATE	COMMONWEALTH OF PENNSYLVANIA	GOVERNOR	SHEET NO.
SEPT. 1967	RAYMOND P. SHAFER		5
SCALE AS NOTED	DEPT. OF PROPERTY & SUPPLIES		OF 7
	PERRIN C. HAMILTON	SECRETARY	
	HARRISBURG, PENNSYLVANIA		



ALL DIMENSIONS AND MEASUREMENTS SHALL BE CHECKED AND VERIFIED BY THE CONTRACTOR AT THE SITE

23
9/15/67