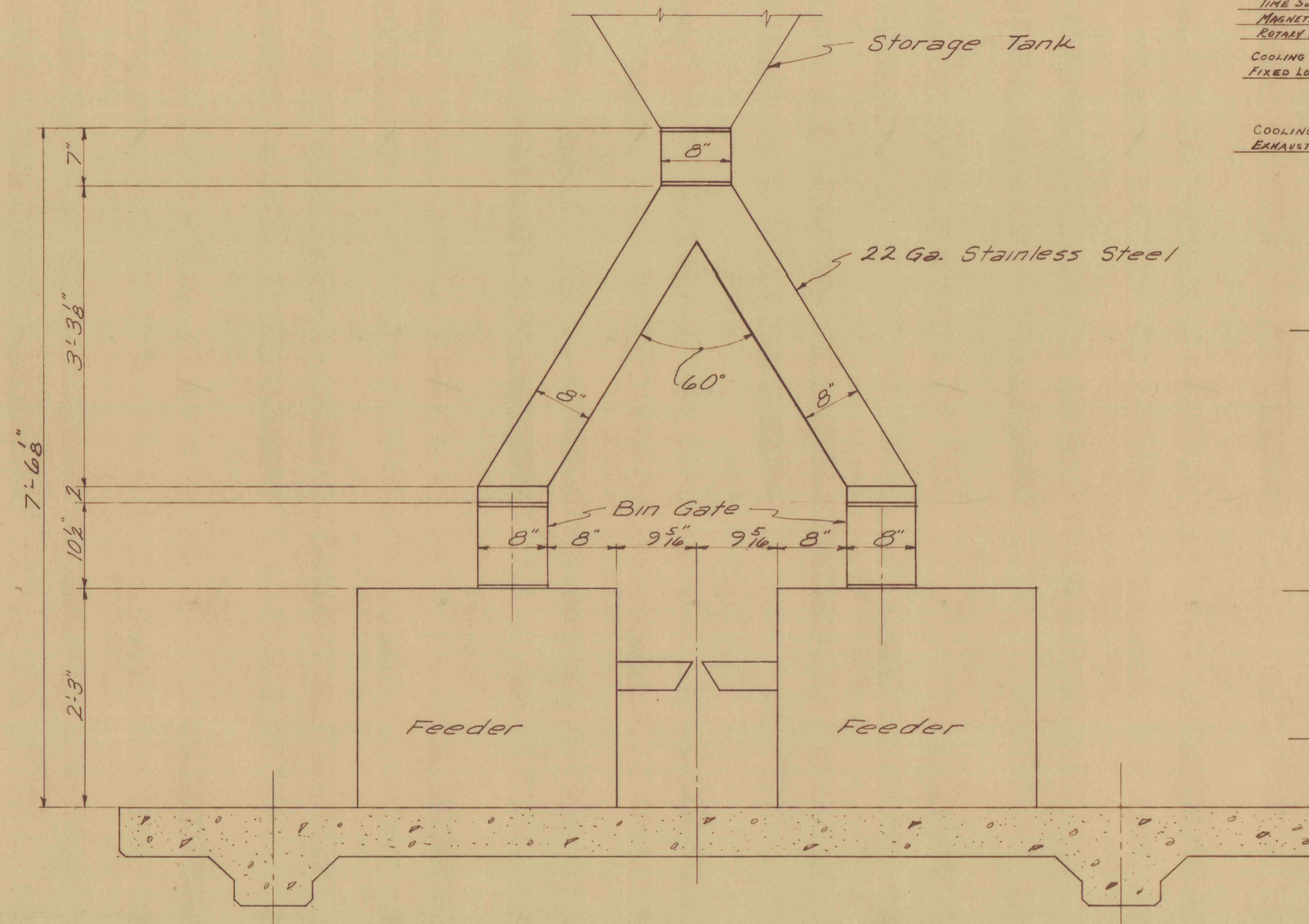


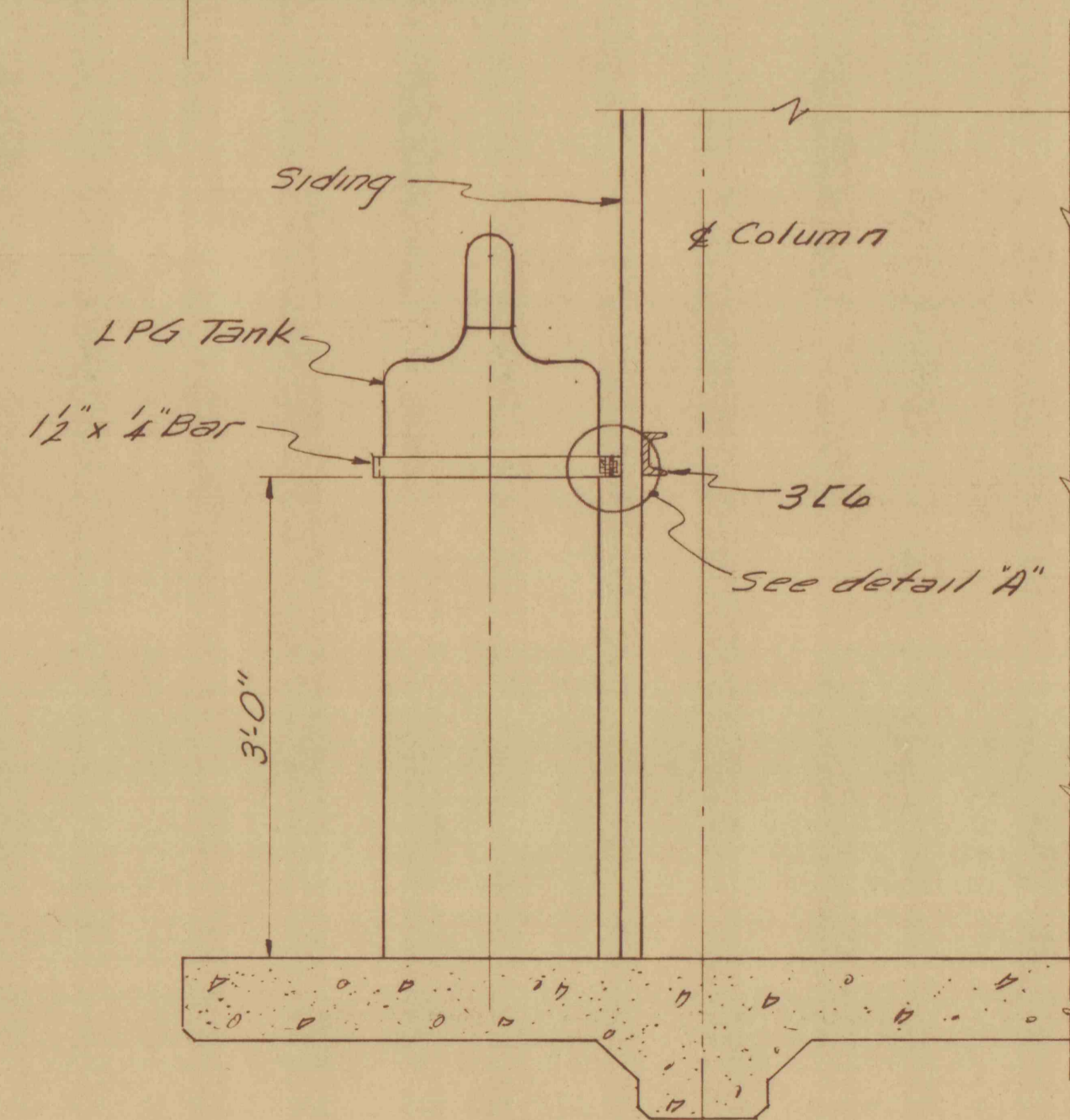
EQUIPMENT LAYOUT
Scale 1"=1'-0"

NOTES:
For details of door buck see sheet # 7
For detail of siding attachment to column see sheet # 4

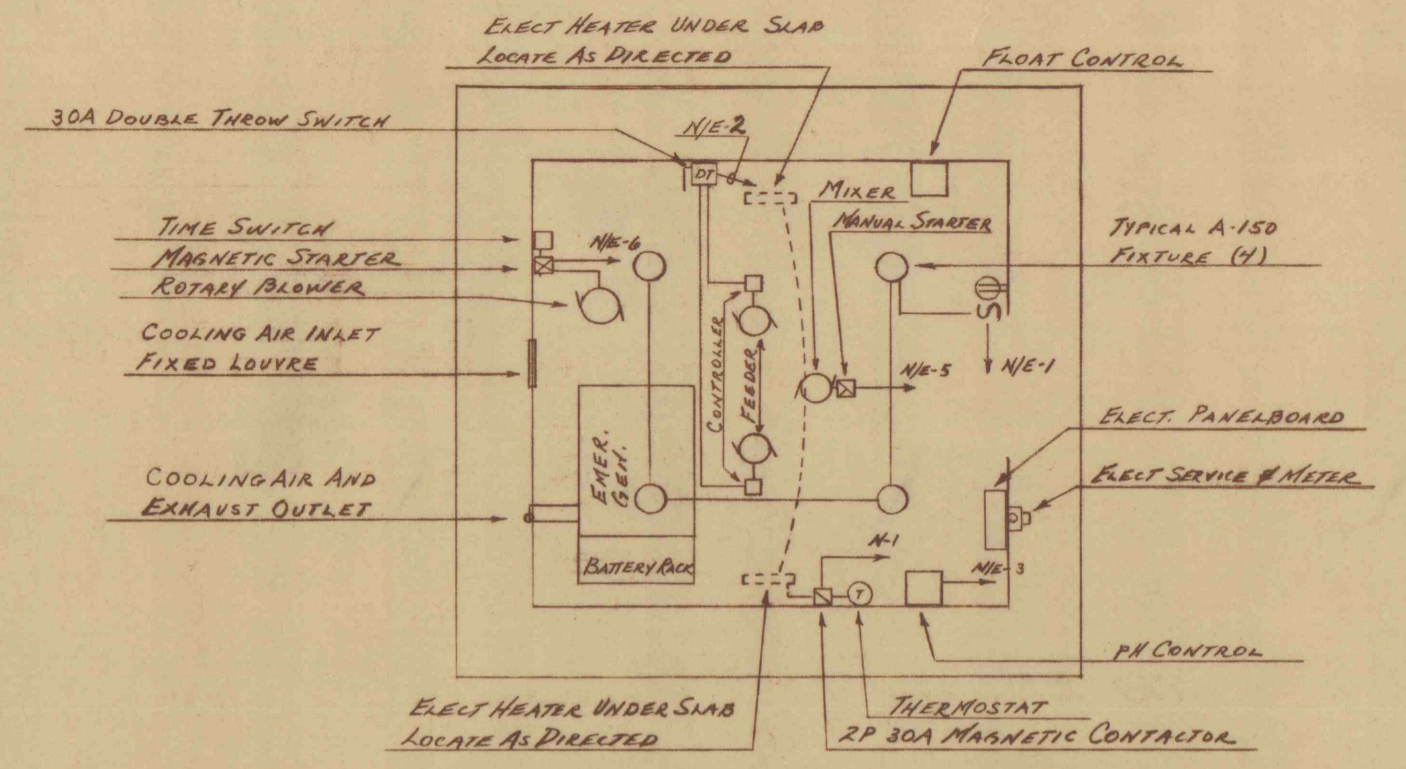
Install L.P.G. tanks to clear exhaust from emerg. gen.



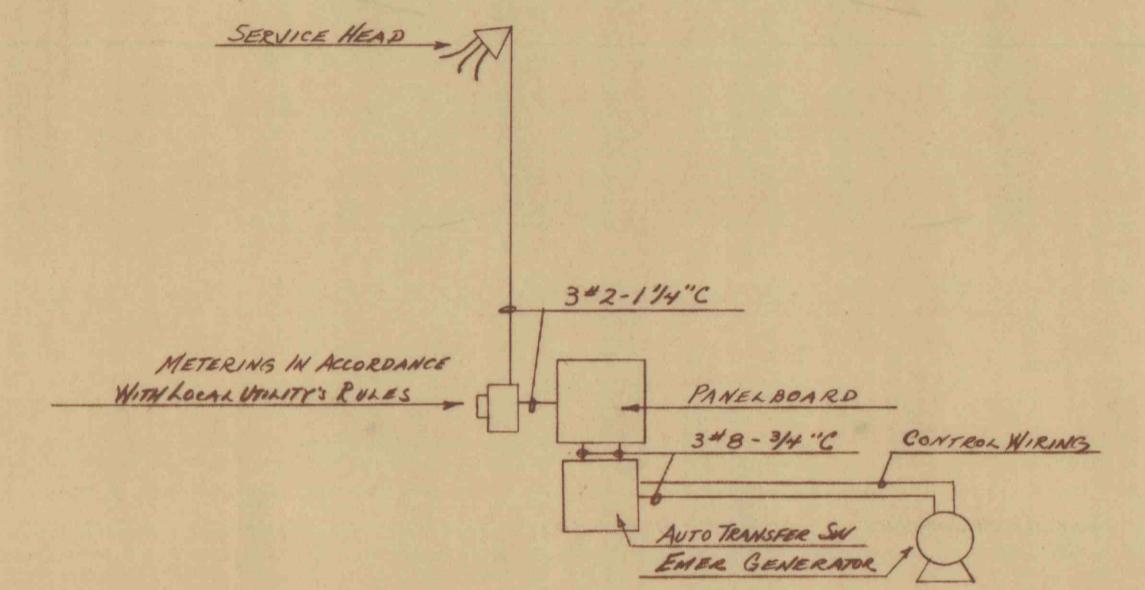
DETAIL OF LIME FEED
Scale: 1"=1'-0"



SECTION "A-A"
Scale 1"=1'-0"



ELECTRICAL FLOOR PLAN
Scale 3/4"=1'-0"



ELECTRICAL RISER DIAGRAM
Not To Scale

ELECTRICAL PANELBOARD SCHEDULE

Section	N/E	18 3W	120/240V	50A MAIN BKR	WIRING
1	20	1	LIGHTS & RECEPTACLE	2#12-34°C	
2	20	1	FEEDER	2#12-34°C	
3	20	1	pH CONTROL	2#12-34°C	
4	20	1	SPARE		
5	20	2	MIXER	2#12-34°C	
6	30	2	ROTARY BLOWER	2#12-34°C	

Section	N	18 3W	120/240V	100A MAIN BREAKER	WIRING
1	40	2	ELECTRIC HEATERS	2#8-34°C	
2	50	2	AUTO TRANSFER SWITCH	3#8-34°C	
3-4	50	2	SPACES		

NOTE: SECTION N/E FED FROM AUTOMATIC TRANSFER SWITCH.

REVISIONS

SYMBOL	CORRECTIONS

APPROVALS

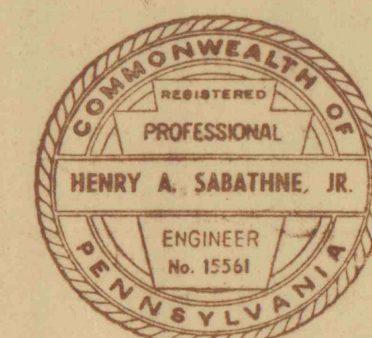
APPROVED: [Signature]
DIRECTOR—BUREAU OF ENGINEERING & CONSTRUCTION
APPROVED: [Signature]
SUPERVISING ENGINEER—BUREAU OF ENGINEERING & CONSTRUCTION
FOR DEPT. OF MINES & MINERALS SECY
SUBMITTED BY: [Signature] ELECTRICAL ENGINEER

CHECKED BY

ARCH.	CIVIL & STRUCT.	MECH.	ELECT.
	Flit		Fry 9/29/67

PROJECT NO. 15L 1061

EQUIPMENT LAYOUT
MINE DRAINAGE TREATMENT
SANDY RUN LUZERNE CO., PENNSYLVANIA



BUREAU OF ENGINEERING & CONSTRUCTION
DEPARTMENT OF PROPERTY & SUPPLIES

DATE	COMMONWEALTH OF PENNSYLVANIA	SHEET NO.
SEPT. 1967	RAYMOND P. SHAFER GOVERNOR	4
SCALE AS NOTED	PERRIN C. HAMILTON DEPT. OF PROPERTY & SUPPLIES SECRETARY	OF 7

ALL DIMENSIONS AND MEASUREMENTS SHALL BE CHECKED AND VERIFIED BY THE CONTRACTOR AT THE SITE