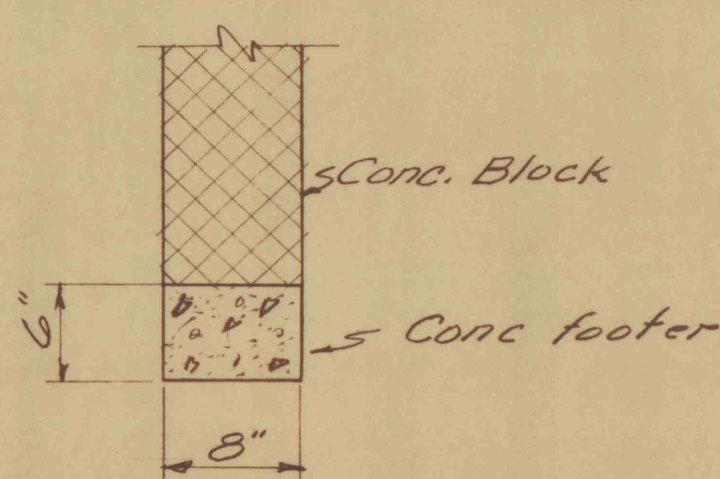
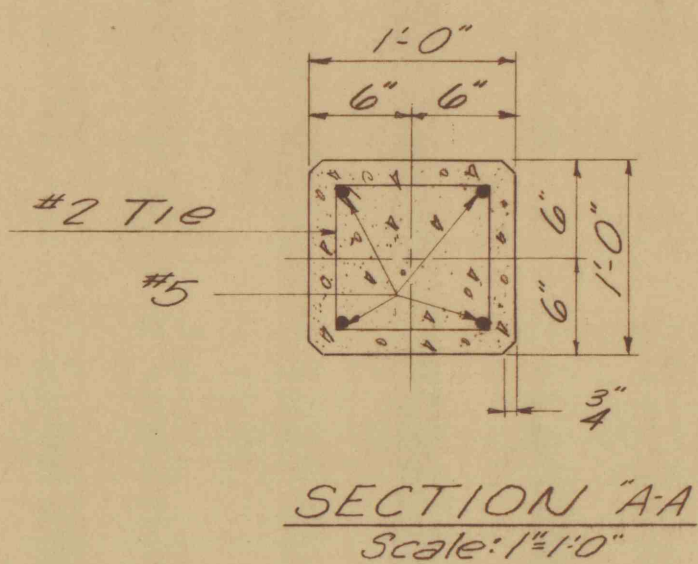


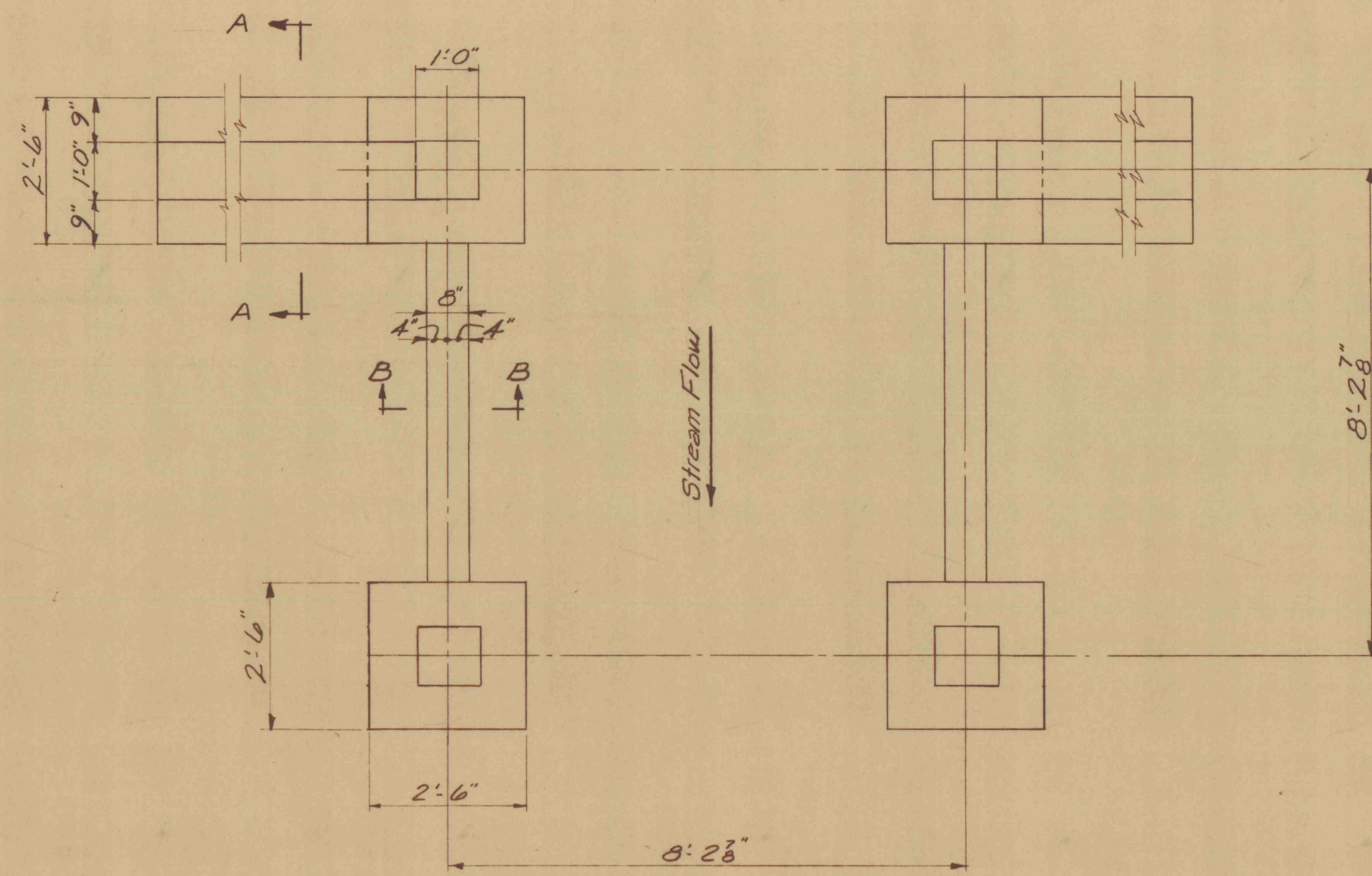
SECTION "A-A"  
Scale 1"-1'-0"



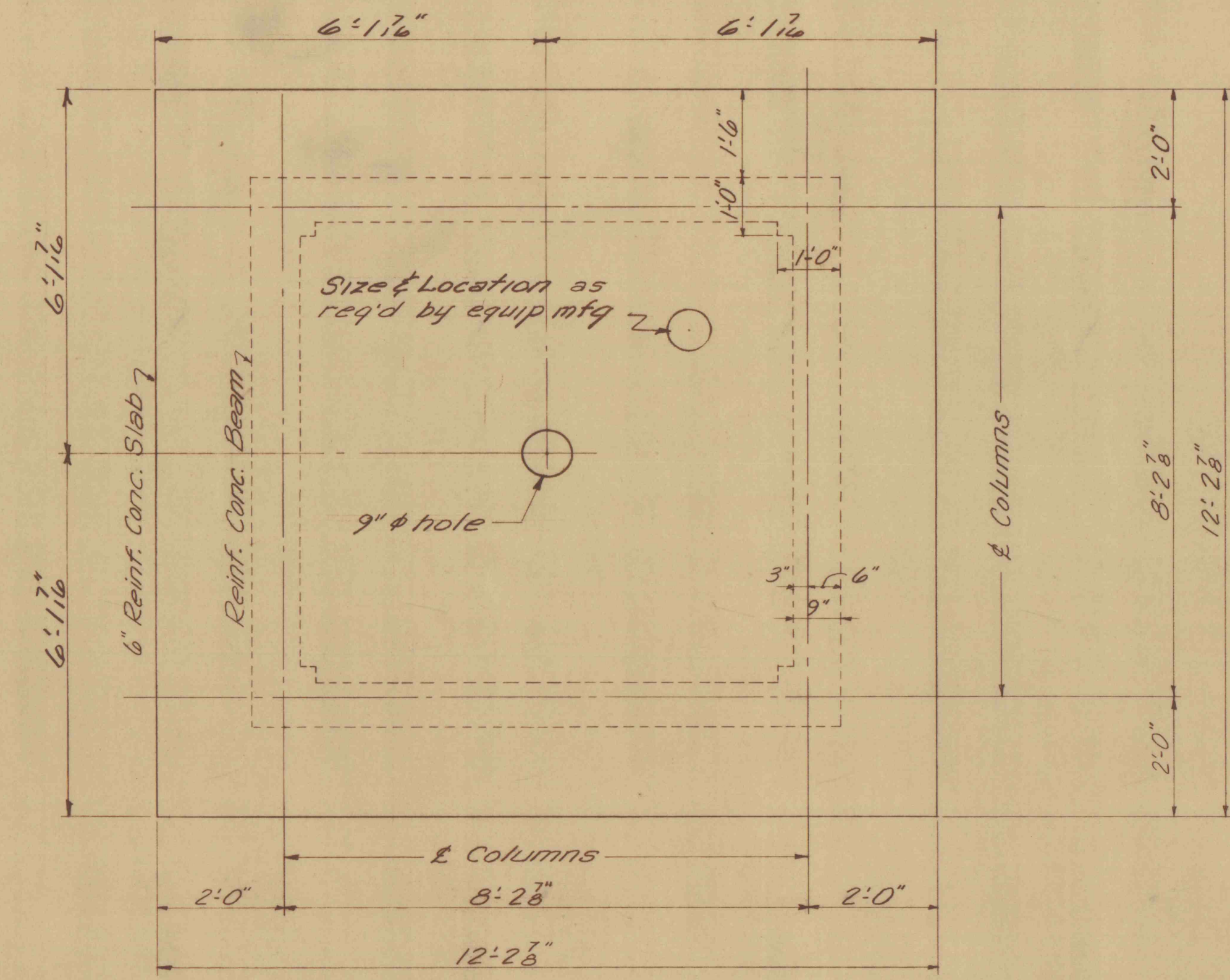
SECTION "B-B"  
Scale 1"-1'-0"



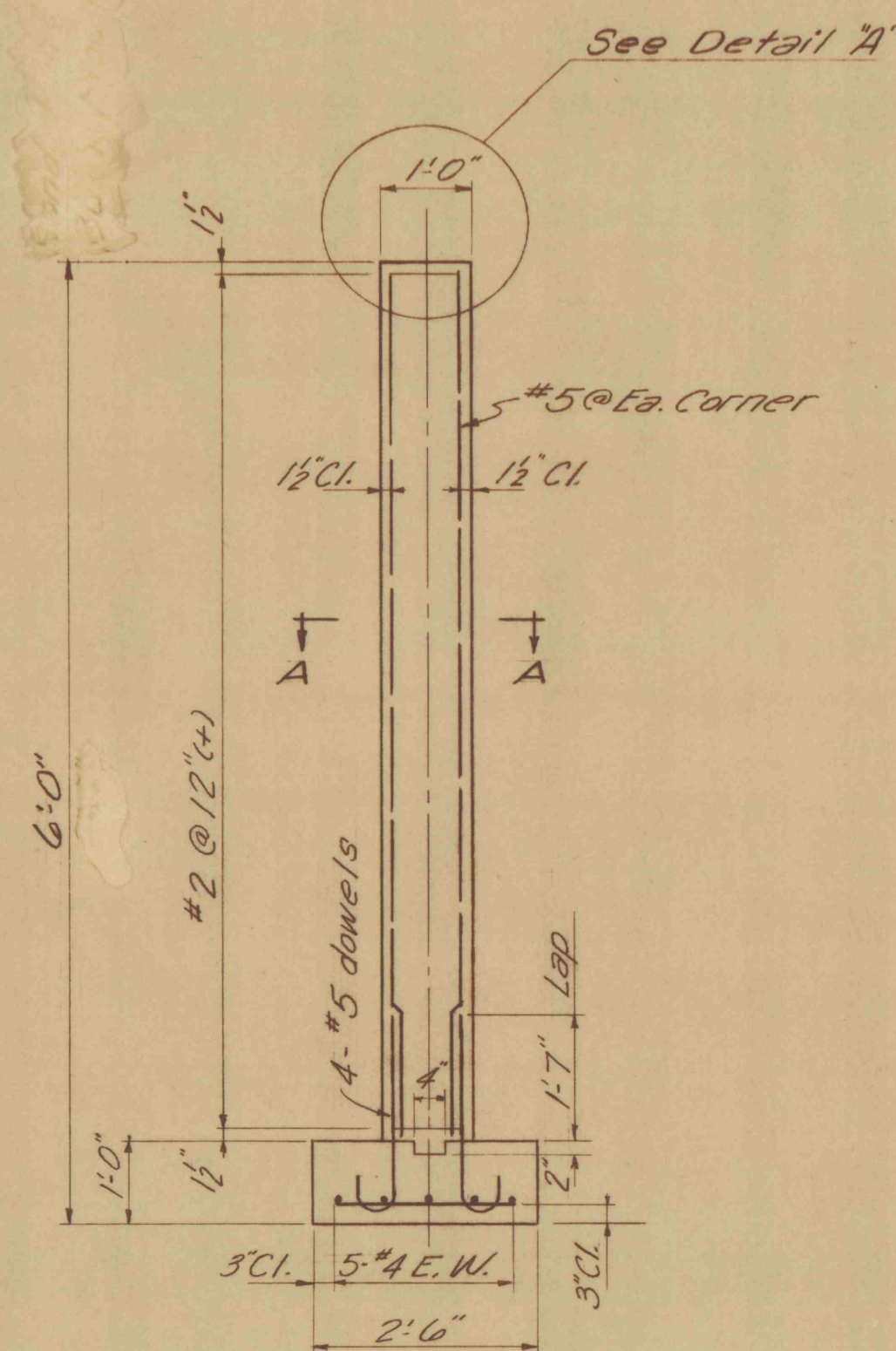
SECTION "AA"  
Scale 1"-1'-0"



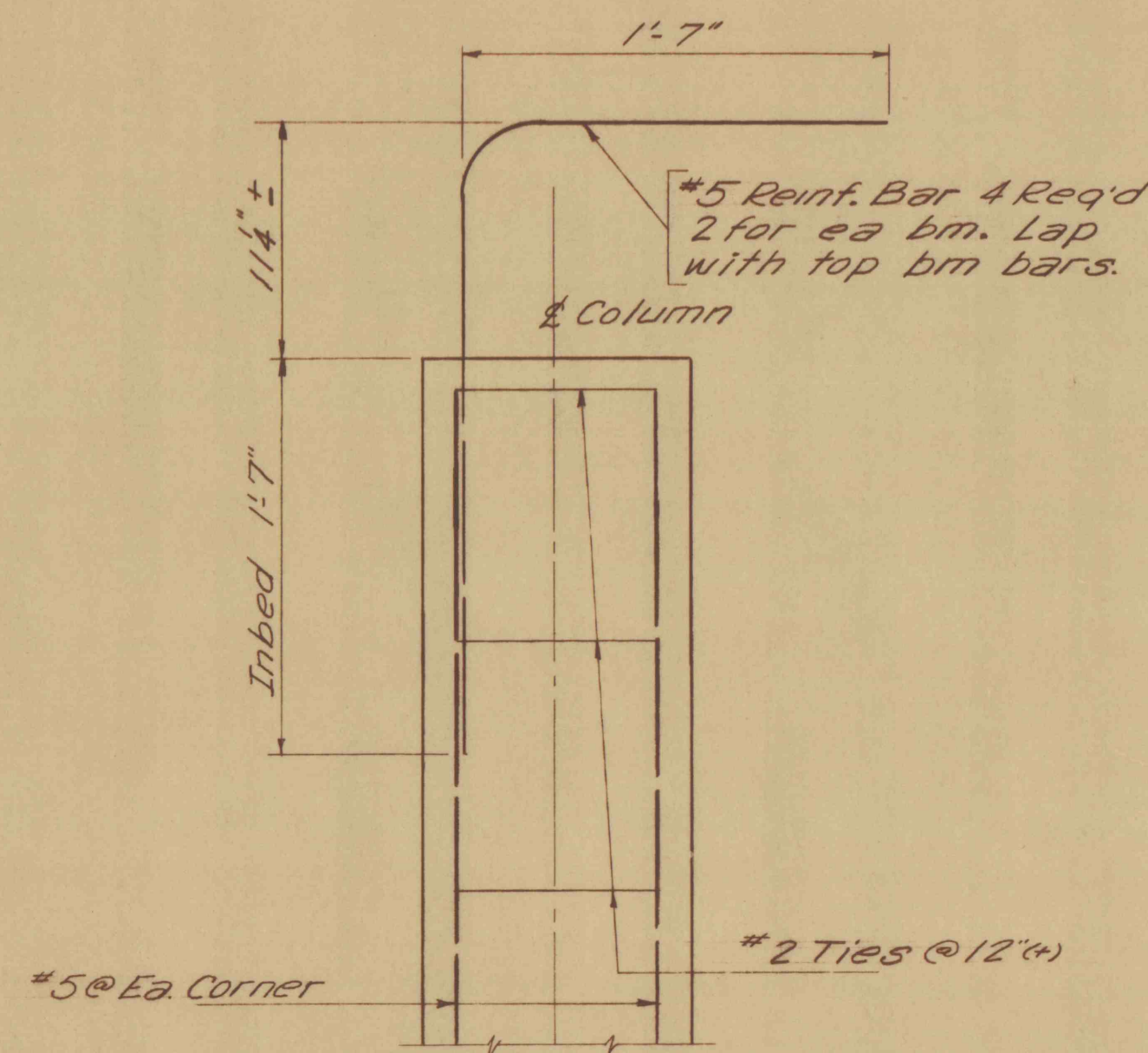
FOUNDATION PLAN  
Scale: 1/2"-1'-0"



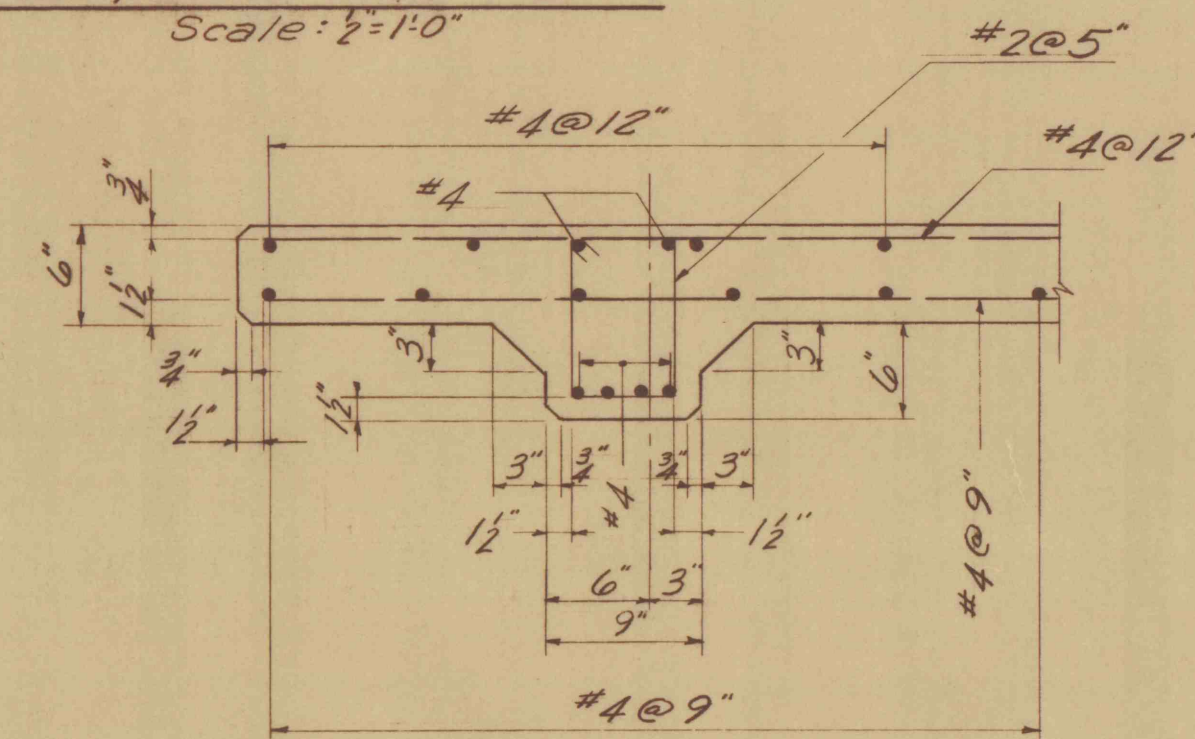
SLAB & FRAMING PLAN  
Scale: 1/2"-1'-0"



DETAIL - COLUMN & FTG.  
Scale: 1/2"-1'-0"  
Overflow wall & block wall not shown



DETAIL "A"  
Scale: 1/2"-1'-0"



SECTION "B-B"  
Scale: 1"-1'-0"

REVISIONS	
SYMBOL	CORRECTIONS

APPROVALS	
APPROVED	<i>[Signature]</i>
DIRECTOR - BUREAU OF ENGINEERING & CONSTRUCTION	
APPROVED	<i>[Signature]</i>
ENGINEER - BUREAU OF ENGINEERING & CONSTRUCTION	
APPROVED	<i>[Signature]</i>
FOR DEPT. OF MINES & MINERALS SEC'S.	
SUBMITTED BY	<i>[Signature]</i> ENG'R

CHECKED BY			
ARCH.	CIVIL & STRUCT.	MECH.	ELECT.
	<i>[Signature]</i>		

PROJECT NO. SL 106-1

PLANS & DETAILS

MINE DRAINAGE TREATMENT  
SANDY RUN LUZERNE CO., PENNSYLVANIA

BUREAU OF ENGINEERING & CONSTRUCTION  
DEPARTMENT OF PROPERTY & SUPPLIES

DATE	COMMONWEALTH OF PENNSYLVANIA	GOVERNOR	SHEET NO.
SEPT. 1967	RAYMOND P. SHAFER		3
SCALE	DEPT. OF PROPERTY & SUPPLIES		OF
AS NOTED	PERRIN C. HAMILTON	SECRETARY	7
	HARRISBURG, PENNSYLVANIA		



ALL DIMENSIONS AND MEASUREMENTS SHALL BE CHECKED AND VERIFIED BY THE CONTRACTOR AT THE SITE

92  
9/29/67