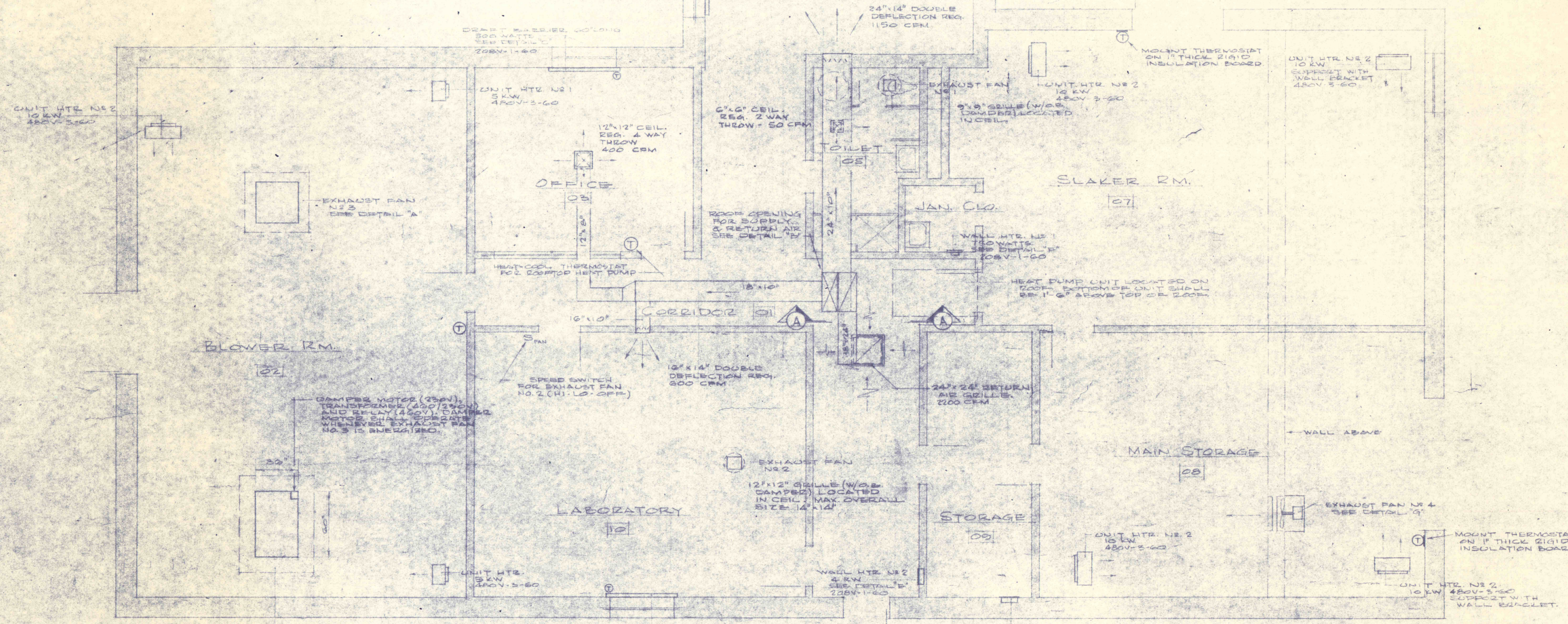
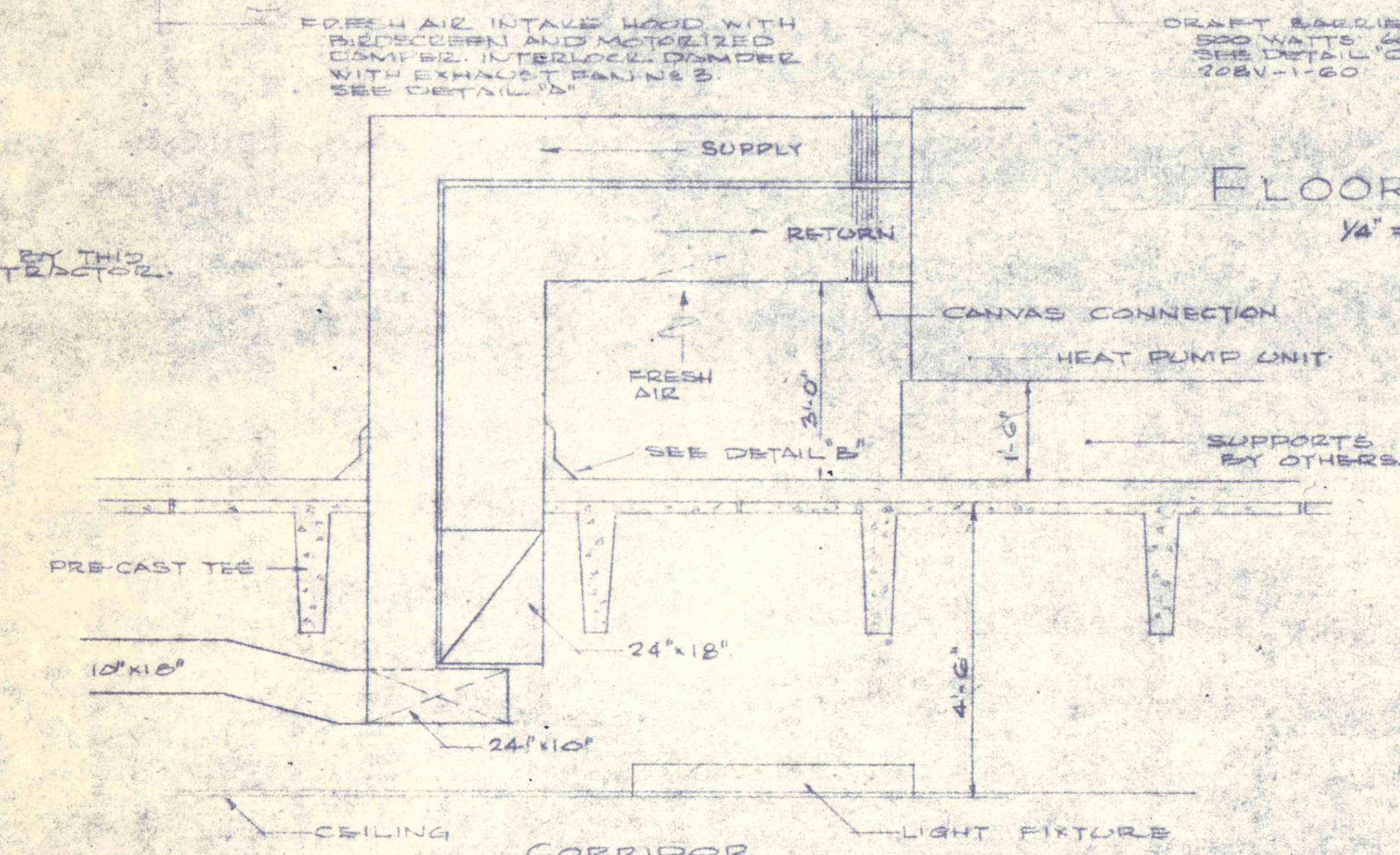


DETAIL "A" - PREFABRICATED CURB
1'-11 1/2"

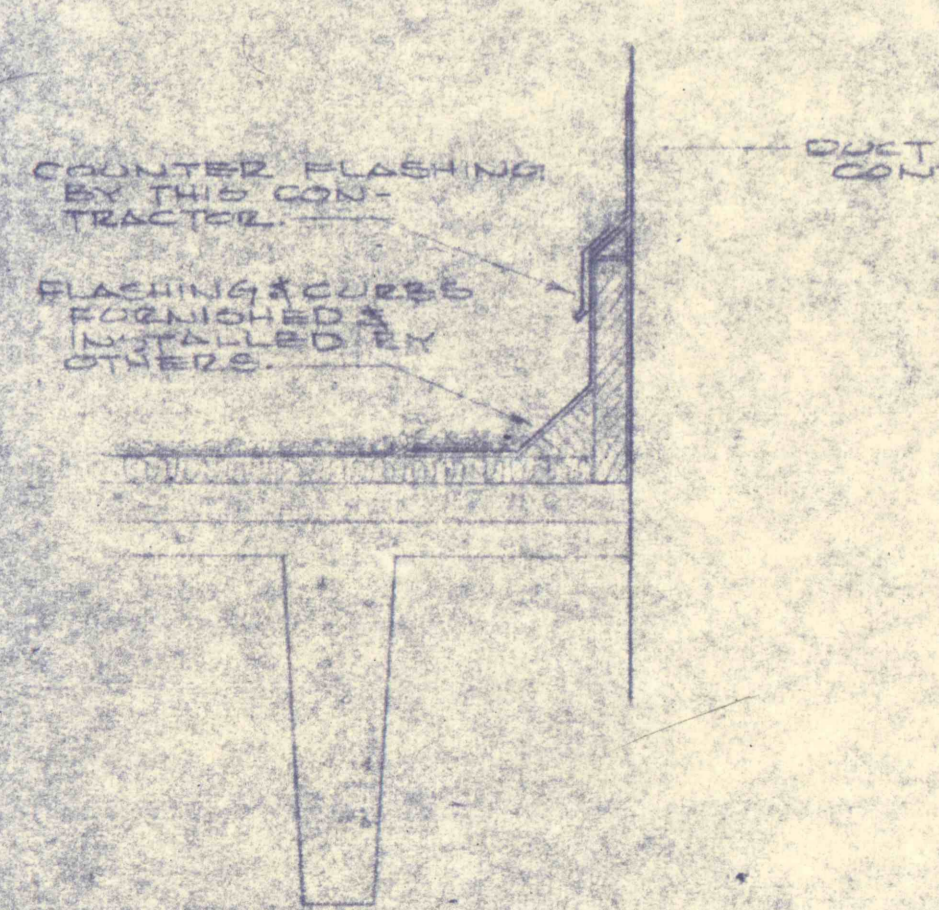


FLOOR PLAN
1/4" = 1'-0"

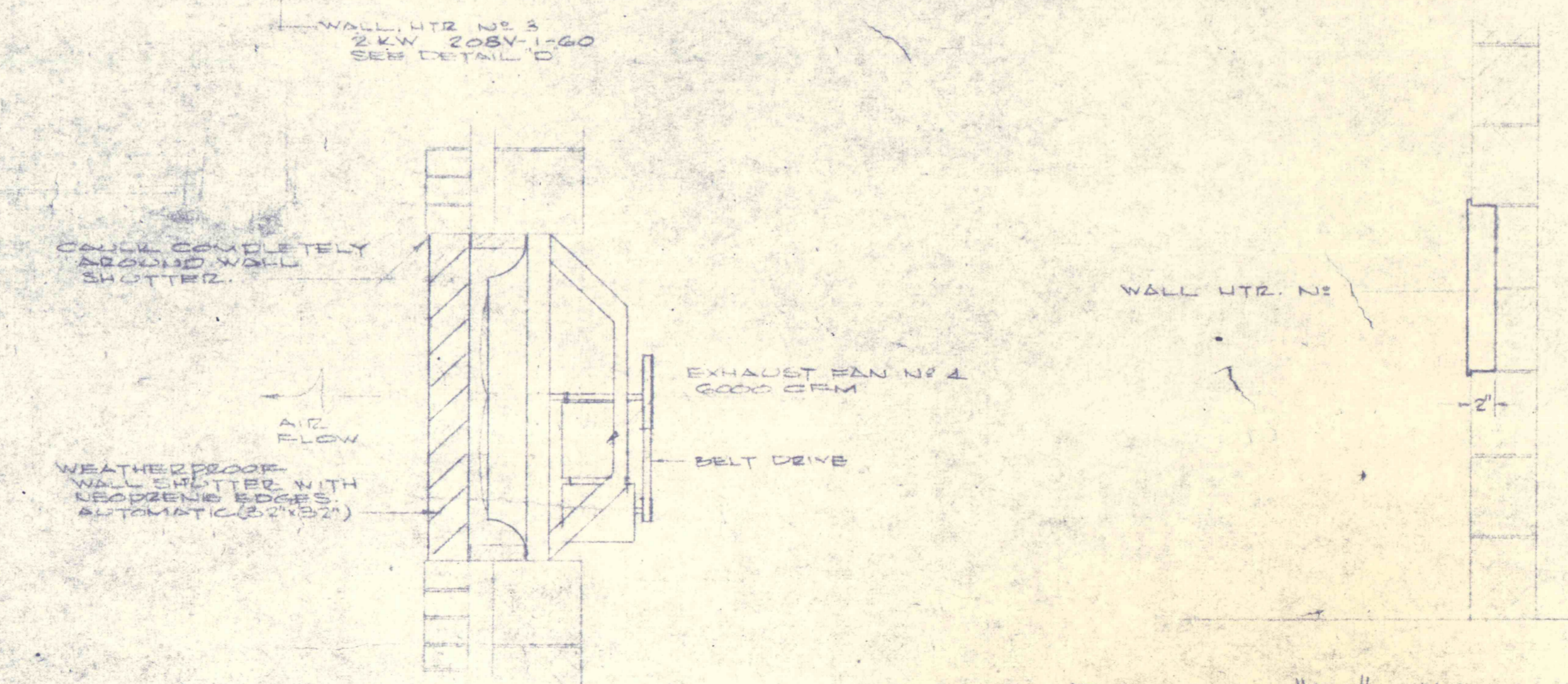
SECTION "AA"
1/2" = 1'-0"



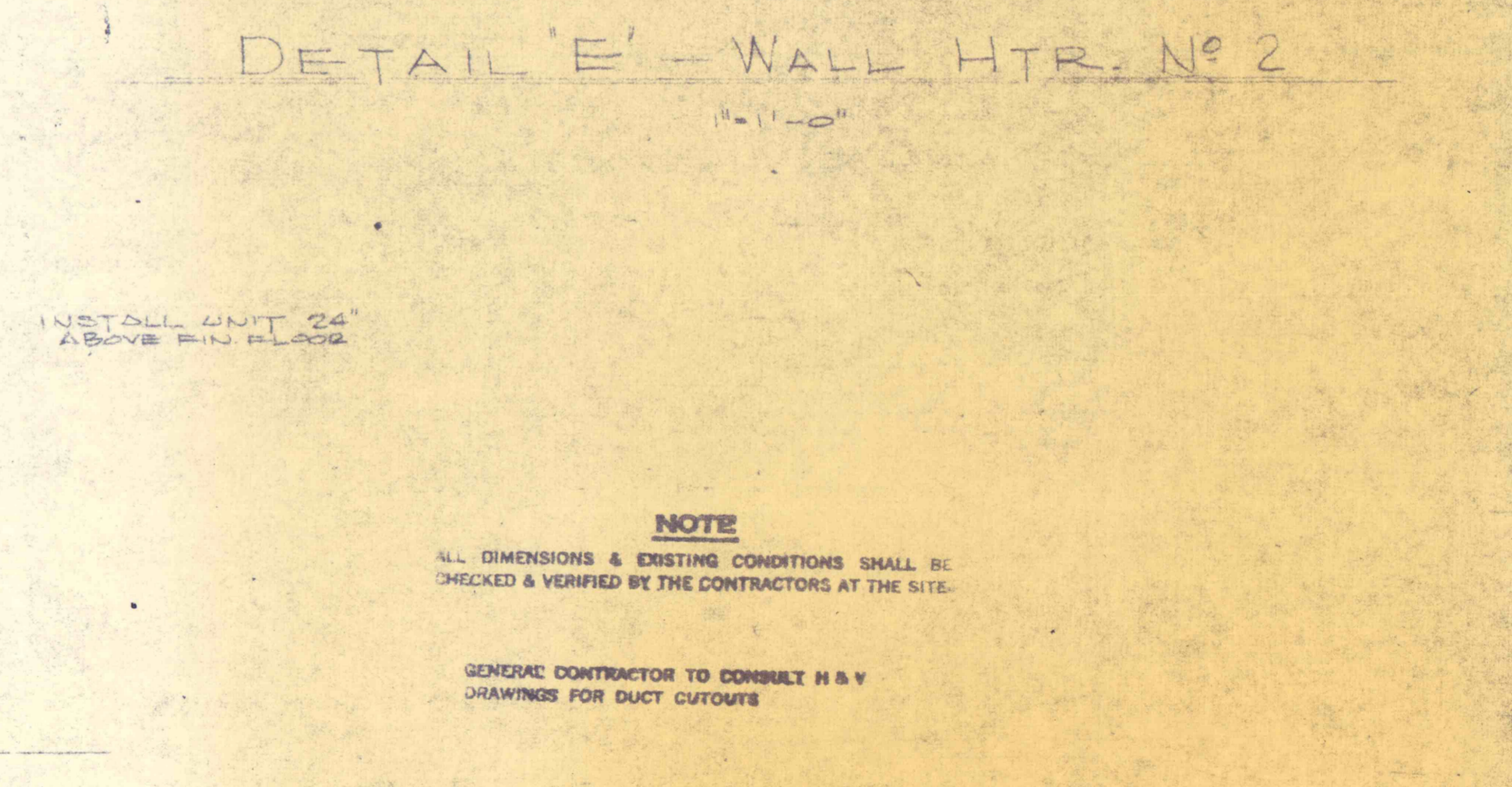
DETAIL "B" - DUCT THRU ROOF
1'-0"



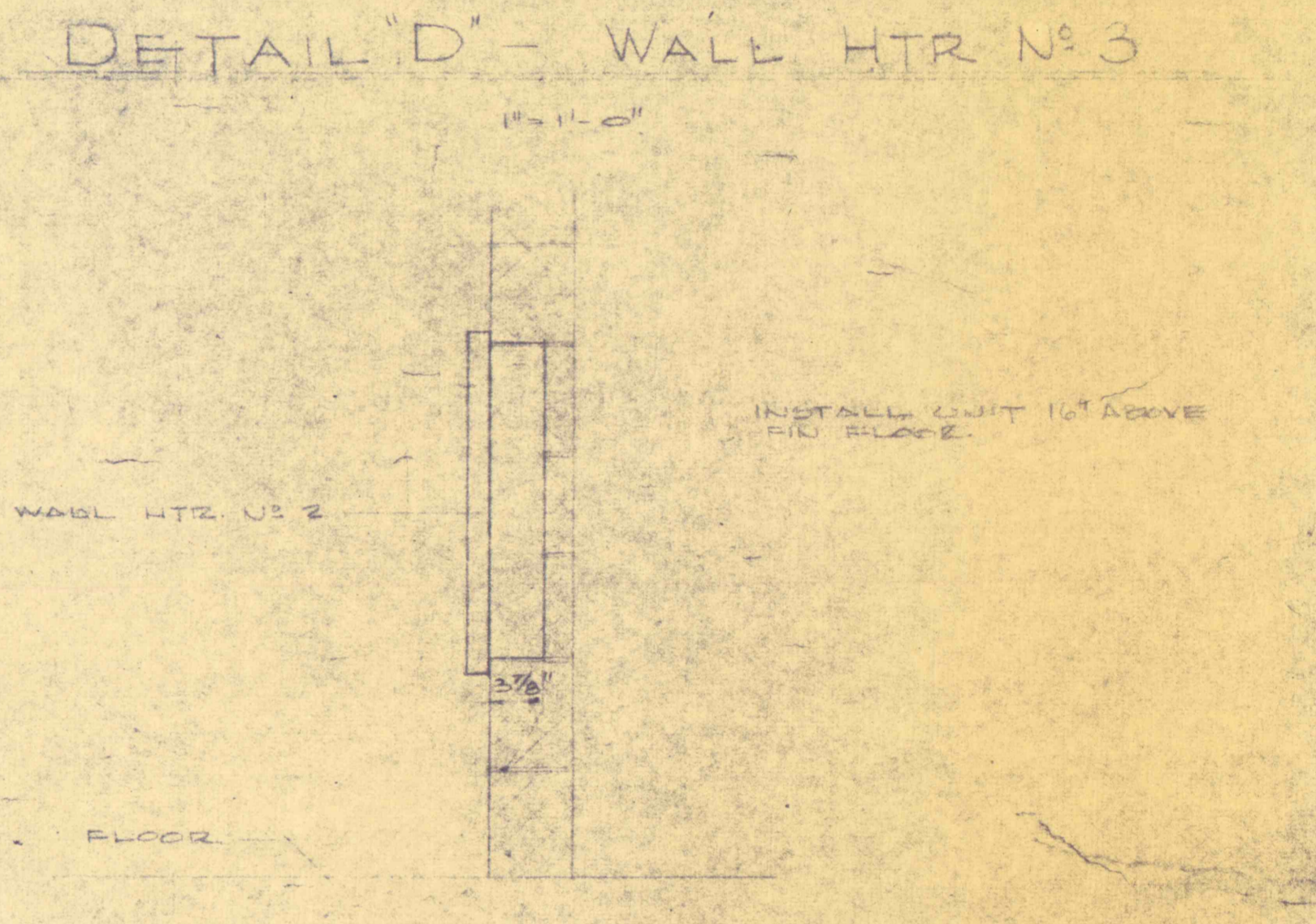
DETAIL "G" - EXHAUST FAN NO. 4
1'-11 1/2"



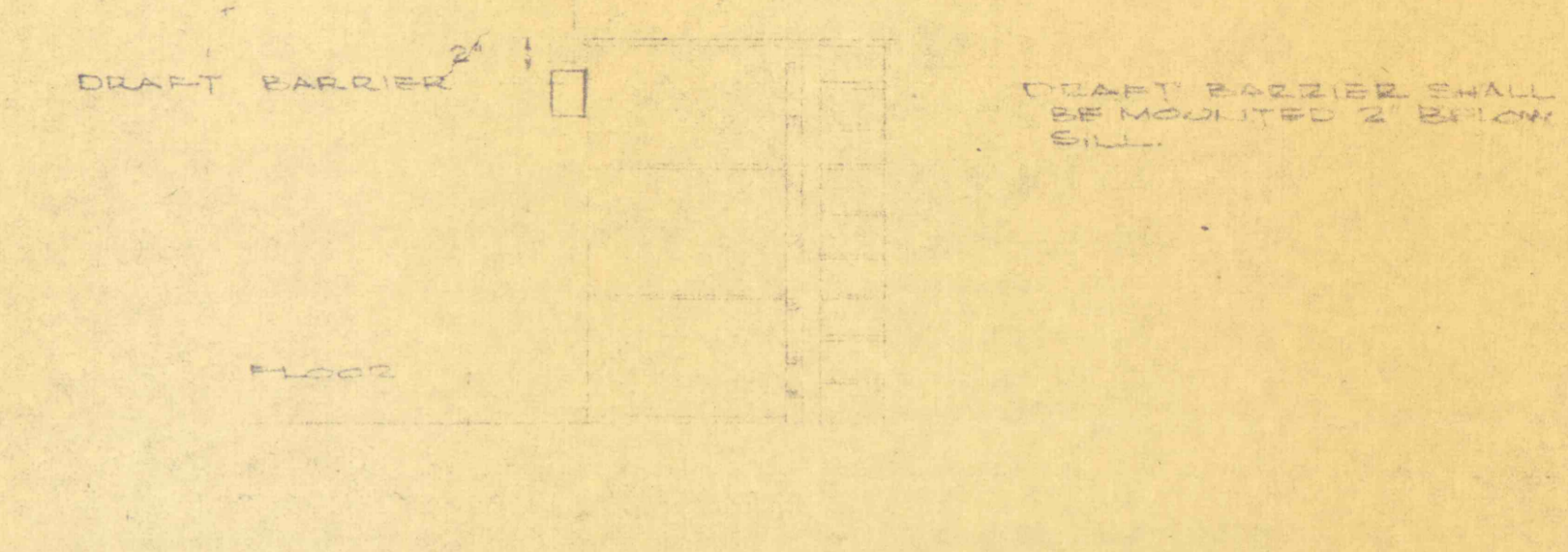
DETAIL "F" - WALL HTR. NO. 1
1'-11 1/2"



DETAIL "E" - WALL HTR. NO. 2
1'-11 1/2"



DETAIL "C" - DRAFT BARRIER
1'-11 1/2"



- EXHAUST FANS**
- NO. 1 CENTRIFUGAL ROOF EXHAUSTER, DIRECT DRIVE, SINGLE SPEED, 1000 CFM - 1750 RPM, 1/2 HP, 115V, 1-60 WITH LIGHT CIRCUIT.
 - NO. 2 CENTRIFUGAL ROOF EXHAUSTER, DIRECT DRIVE, TWO SPEED, 1000 CFM - 1750 RPM, 1/2 HP, 115V, 1-60 WITH HI-LO OFF SELECTOR SWITCH.
 - NO. 3 10" PELLER TYPE, BELT DRIVEN, BLOWER ROOF VENTILATOR, TWO SPEED, 1000/4550 CFM, 115/350 RPM, 1/2 HP, 115V, 1-60.
 - NO. 4 10" PELLER TYPE BELT DRIVEN WALL FAN, SINGLE SPEED, 2000 CFM, 1/2 HP, 460V, 3-60.
 - NO. 5 CENTRIFUGAL ROOF EXHAUSTER, DIRECT DRIVE, SINGLE SPEED, 1000 CFM - 1750 RPM, 1/2 HP, 115V, 1-60.
 - NO. 6 CENTRIFUGAL WALL EXHAUSTER, DIRECT DRIVE, SINGLE SPEED, 235 CFM - 1750 RPM, 1/2 HP, 115V, 1-60.

HEAT PUMP UNIT
 COOLING LOAD - TOTAL LOAD TO 800 BTU/H
 AIR ENT. INDOOR COIL - 55°F DB, 67°F WB
 AIR ENT. OUTDOOR COIL - 95°F DB
 HEATING LOAD - TOTAL LOAD TO 74,000 BTU/H
 UNIT SHALL BE EQUIPPED WITH 10 KW ACCESSORY SET P. HTR.
 AIR ENT. INDOOR COIL - 60°F DB
 AIR ENT. OUTDOOR COIL - 95°F DB
 INDOOR FAN - 2200 CFM, 1/2 HP, 115V, 1-60
 UNIT SHALL BE 460V, 3-60

- NOTES**
- THE CONTRACTOR SHALL BE RESPONSIBLE FOR COORDINATING WITH ALL OTHER CONTRACTORS AND OBTAINING ALL NECESSARY PERMITS AND APPROVALS FOR ALL WORK TO BE PERFORMED UNDER THIS CONTRACT.
 - EXHAUST FANS SHALL BE MOUNTED ON ROOFS WITH 12" MIN. THICK RIGID INSULATION BOARD. EXHAUST FANS SHALL BE MOUNTED ON WALLS WITH 12" MIN. THICK RIGID INSULATION BOARD.
 - WALL HEATERS SHALL BE MOUNTED ON WALLS WITH 12" MIN. THICK RIGID INSULATION BOARD. WALL HEATERS SHALL BE MOUNTED ON WALLS WITH 12" MIN. THICK RIGID INSULATION BOARD.
 - WALL HEATERS IN THE CONTROL BUILDING SHALL BE PROVIDED WITH INTERNAL CONTROL CIRCUITS.

NOTE
 ALL DIMENSIONS & EXISTING CONDITIONS SHALL BE CHECKED & VERIFIED BY THE CONTRACTOR AT THE SITE.
 GENERAL CONTRACTOR TO CONSULT H & V DRAWINGS FOR DUCT CUTOUTS.

- Ⓡ THERMOSTAT - WALL MOUNTED TYPE WITH BELLOWS OPERATED MERCUURY SWITCH (SPST), ADJUSTABLE SET POINT RANGE (50°F TO 80°F) WITH A TWO DEGREE DIFFERENTIAL. A THERMOWIRE IN COVER, AND SHALL FUNCTION TO CLOSE CONTROL CIRCUIT ON A TEMPERATURE FALL BELOW SET POINT.
 - Ⓢ THERMOSTAT - SAME AS Ⓡ EXCEPT THE ADJUSTABLE SET POINT RANGE SHALL BE 60°F TO 100°F, 120 VOLT.
 - Ⓣ THERMOSTAT - WALL MOUNTED TYPE WITH A HUMAN HAIR ELEMENT COUPLED TO A MERCUURY SWITCH (SPST), ADJUSTABLE SET POINT RANGE (10% TO 90% RELATIVE HUMIDITY) WITH A THREE FEET HUMIDITY DIFF. ABOVE THE SET POINT.
- A SEPARATE 120V CONTROL CIRCUIT FOR OPERATION OF UNIT HEATERS IN CONTROL BUILDING SHALL BE PROVIDED BY ELECTRICAL CONTRACTORS FOR UNIT HEATERS IN OUTLYING STRUCTURES SHALL BE PROVIDED WITH 120V CONTROL CIRCUIT TRANSFORMERS.



REVISIONS		CONTROL BUILDING H.V.A.C. PLAN	
CONSTRUCTION OF TREATMENT FACILITIES OF ACID MINE DRAINAGE RAUSCH CREEK WATERSHED SCHUYLKILL COUNTY, PENNSYLVANIA		JOB NO. 6808	DATE JAN. 1970
ANTHRAHITE RESEARCH & DEVELOPMENT CO. INC. CONSULTING ENGINEERS		SCALE AS NOTED	DRAWN: M.D.S. APPROVED: D.S.B.
POTTSVILLE, PENNSYLVANIA TAMAHUA		DRAWING NO. HV-1	