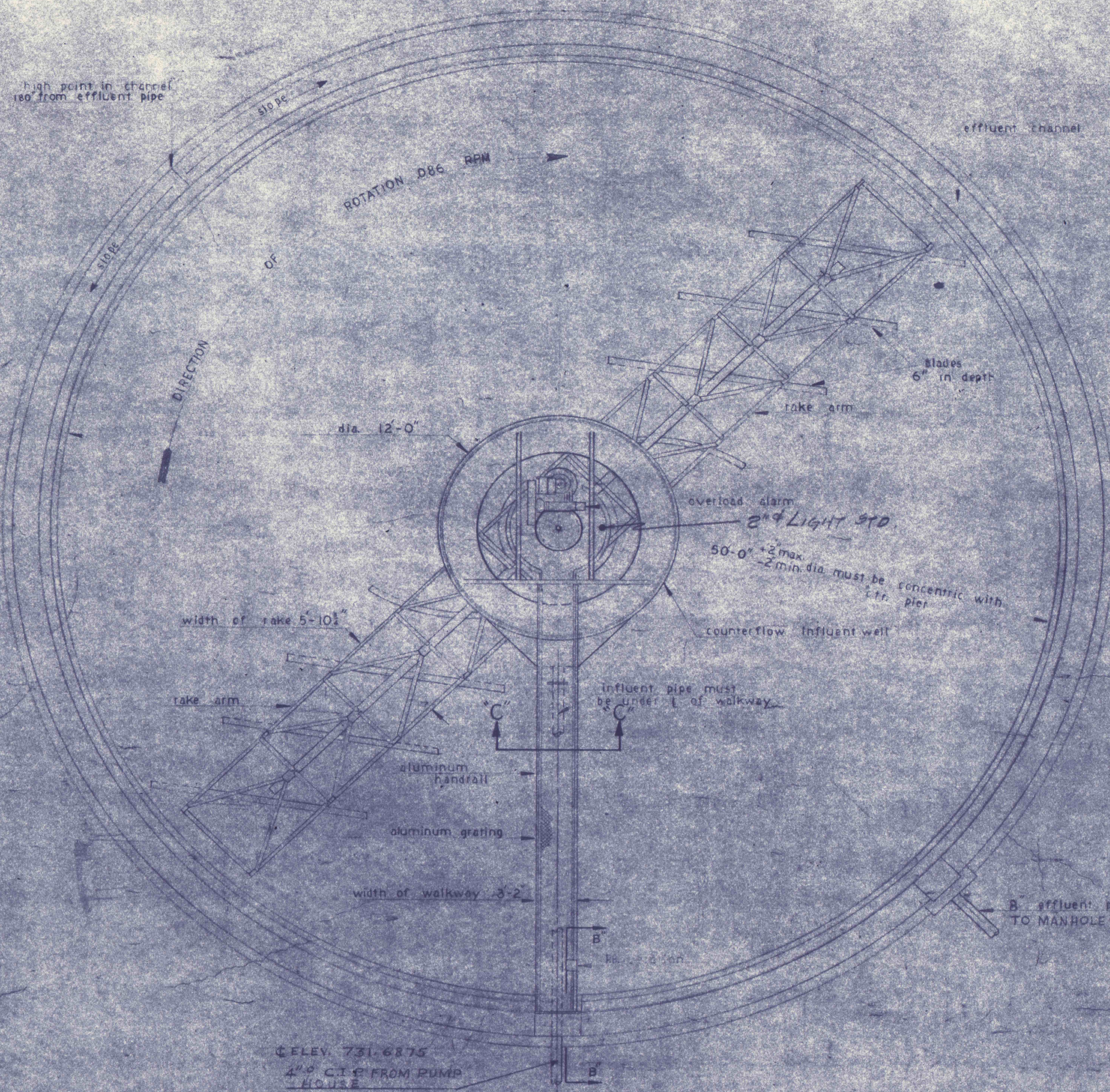
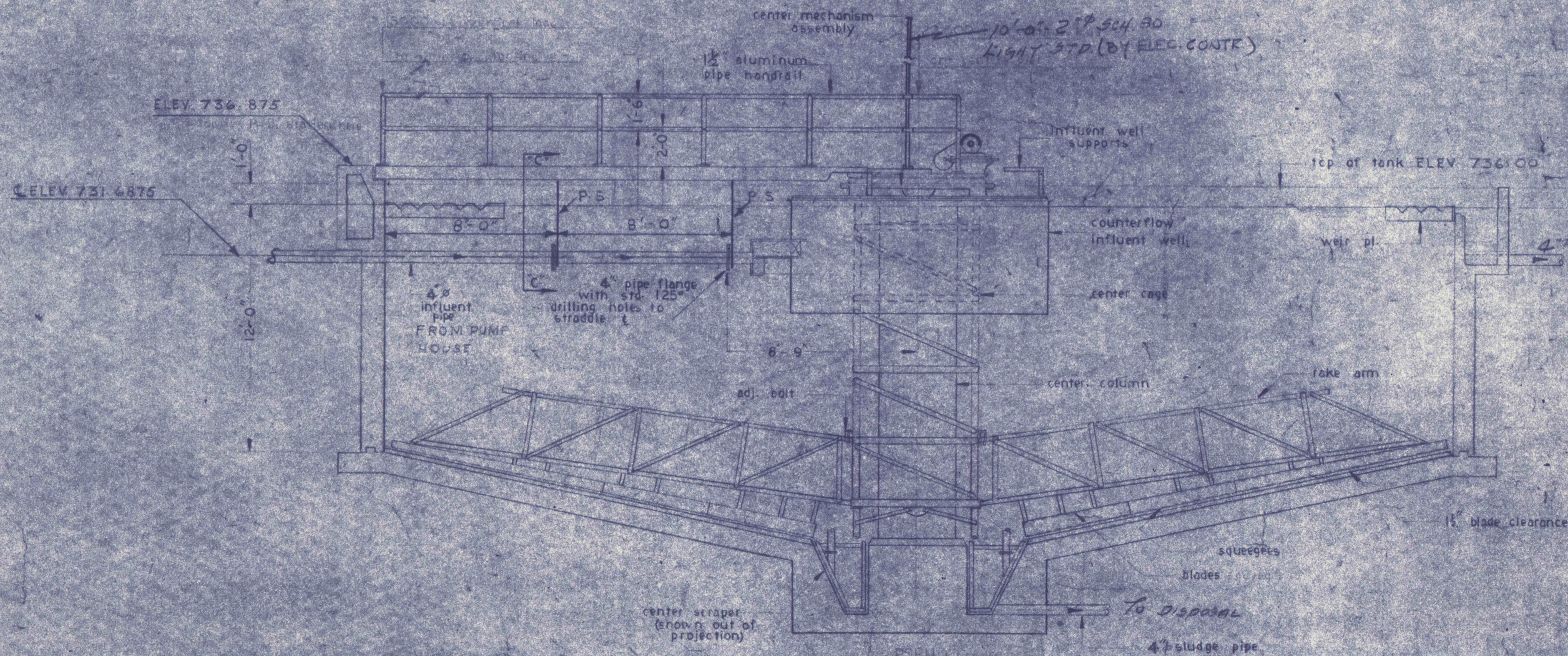


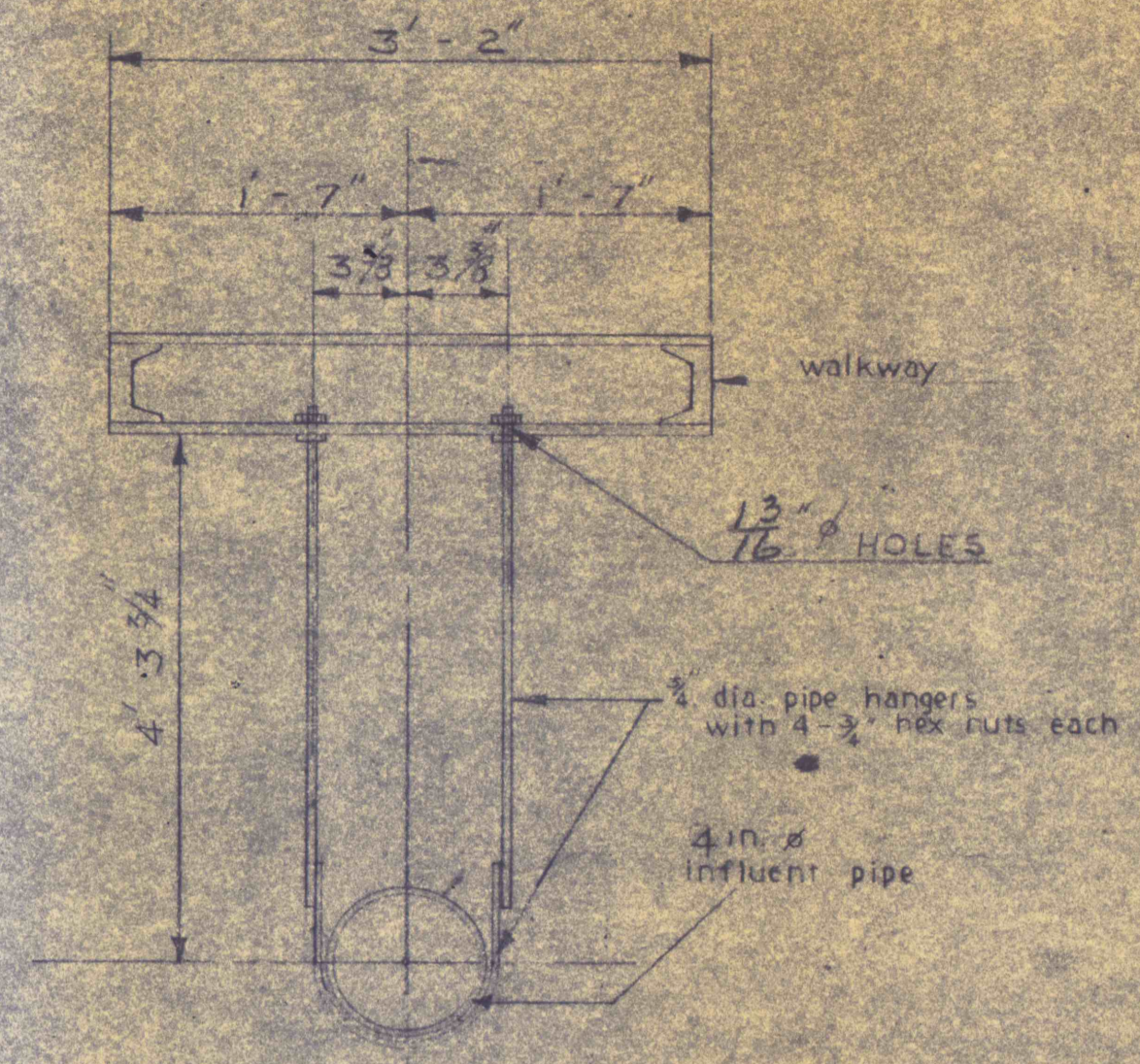
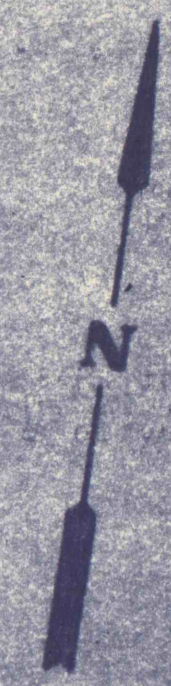
NOTE
 Influent, effluent & sludge
 pipes & walkway may be
 oriented to suit local
 conditions.



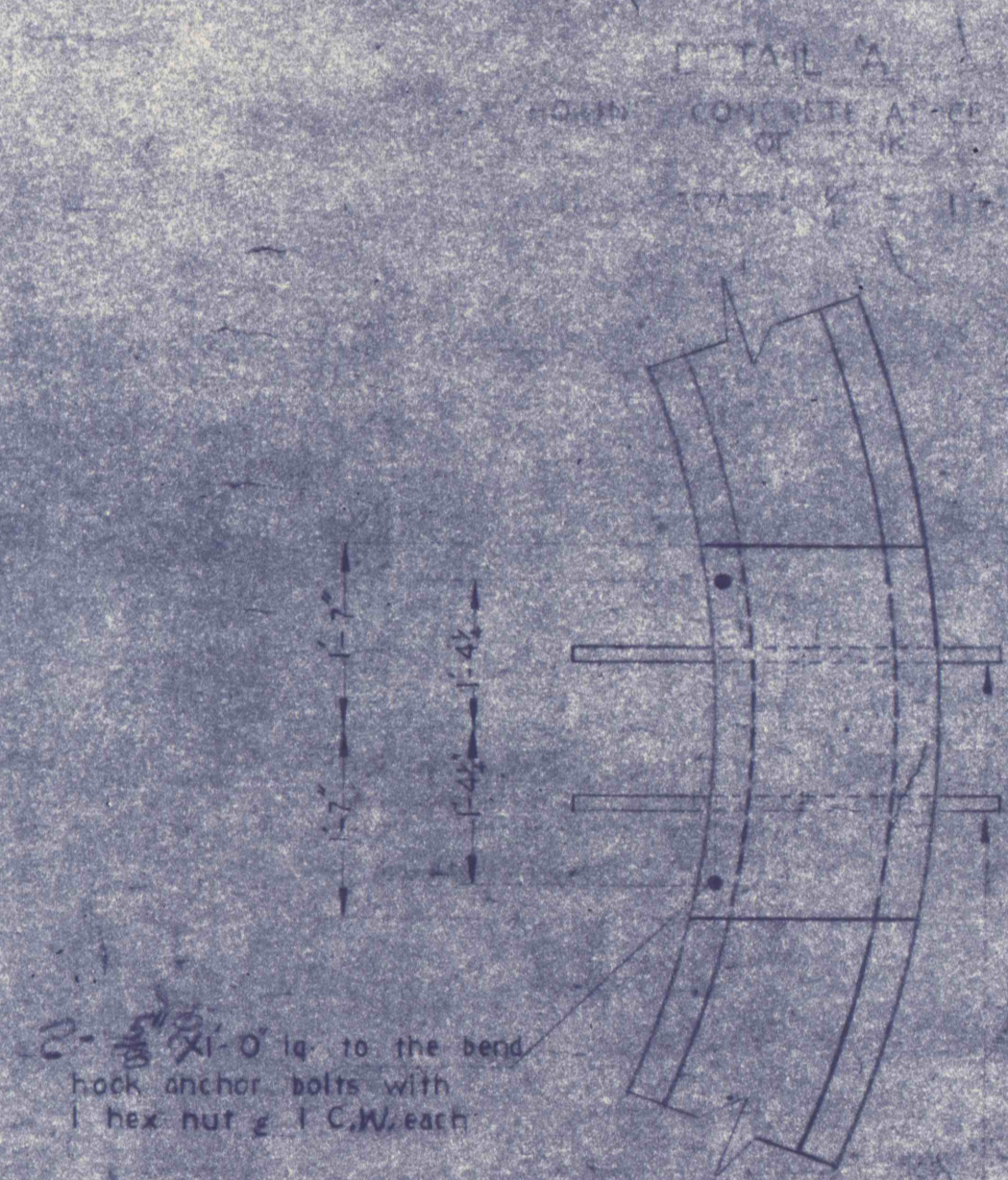
PLAN - DWG C-1, C-2 & C-5
 SCALE: 1/4" = 1'-0"



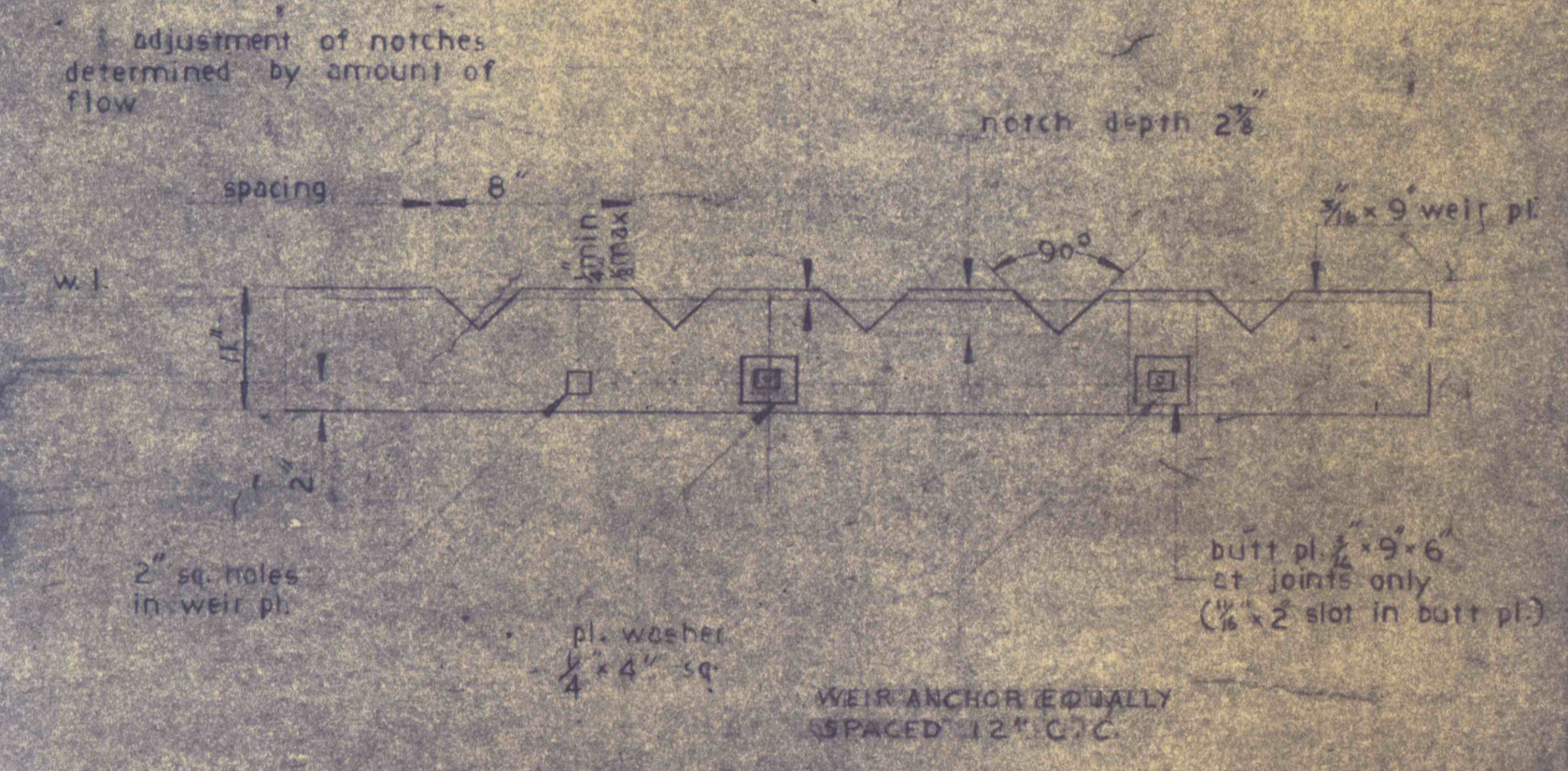
SECTIONAL ELEVATION
 SCALE: 1/4" = 1'-0"



SECTION C-C
PIPE SUPPORT (C REQ D)



DETAIL A
 HOOK ANCHOR BOLT TO CENTER OF GRAVITY



TYPICAL SECTION OF WEIR
 NO SCALE

GENERAL NOTES

1. WATER-TIGHT FLANGED SLEEVE FOR ALL PIPES THRU WALLS OR SLABS BELOW WATER LEVEL.
2. REFER TO SITE PLAN DWG. US C-1 FOR LOCATION OF UNIT.



REVISIONS	

SLUDGE THICKENER - MECHANICAL	
CONSTRUCTION OF TREATMENT FACILITIES OF ACID MINE DRAINAGE RAUSCH CREEK WATERSHED SCHUYLKILL COUNTY PENNSYLVANIA	
JOB NO. 6805 DATE NOV. 1969 SCALE NOTED DRAWING APPROVED T.H.R.	DRAWING NO. C-19
ANTHRACITE RESEARCH & DEVELOPMENT CO., INC. CONSULTING ENGINEERS POTTSVILLE PENNSYLVANIA 17854	