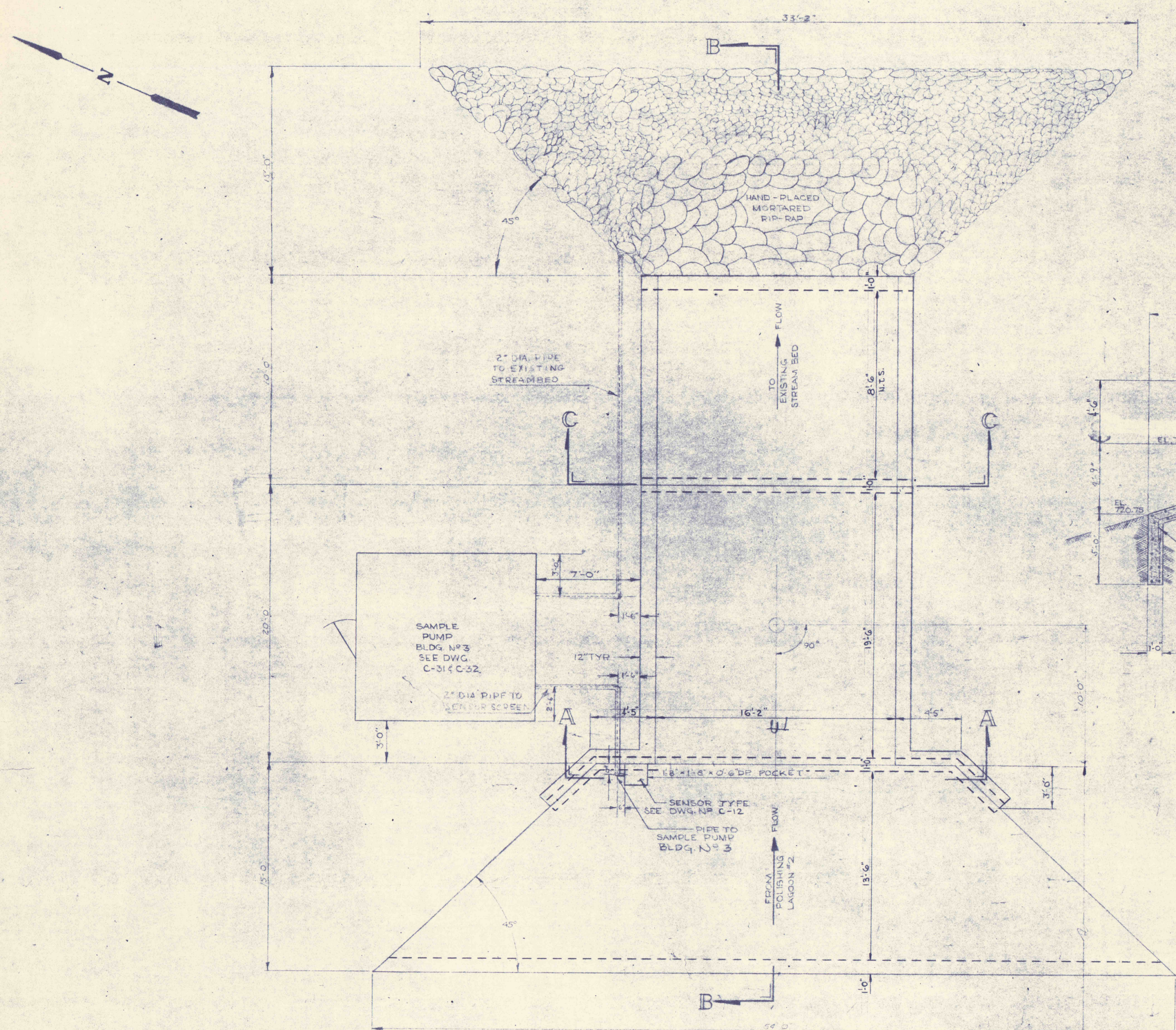


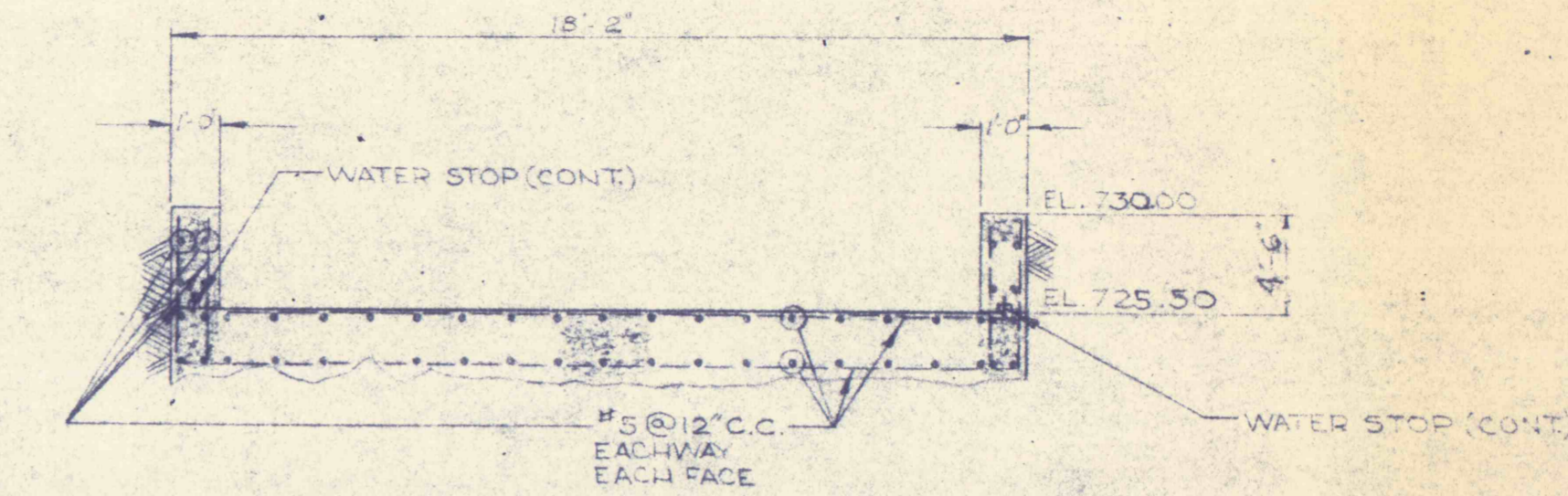
GENERAL NOTES

1. REFER TO SITE PLAN DWG. NO. C-1 FOR LOCATION OF SPILLWAY.

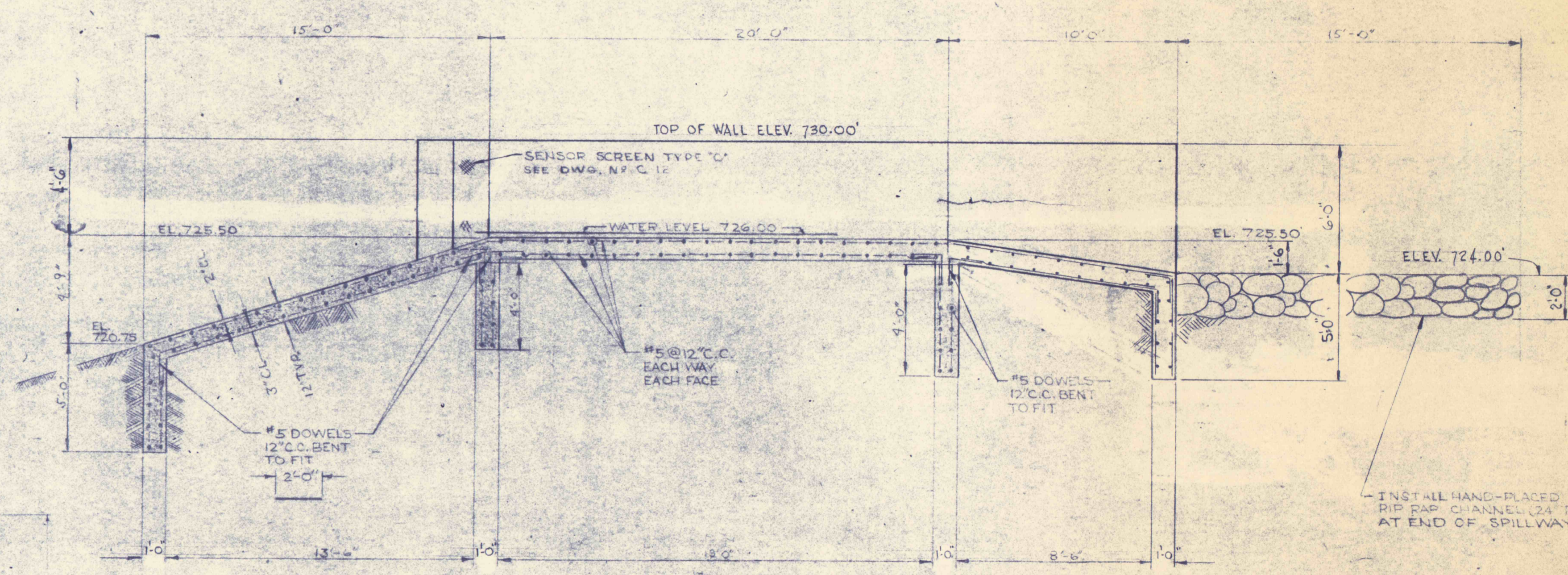


PLAN

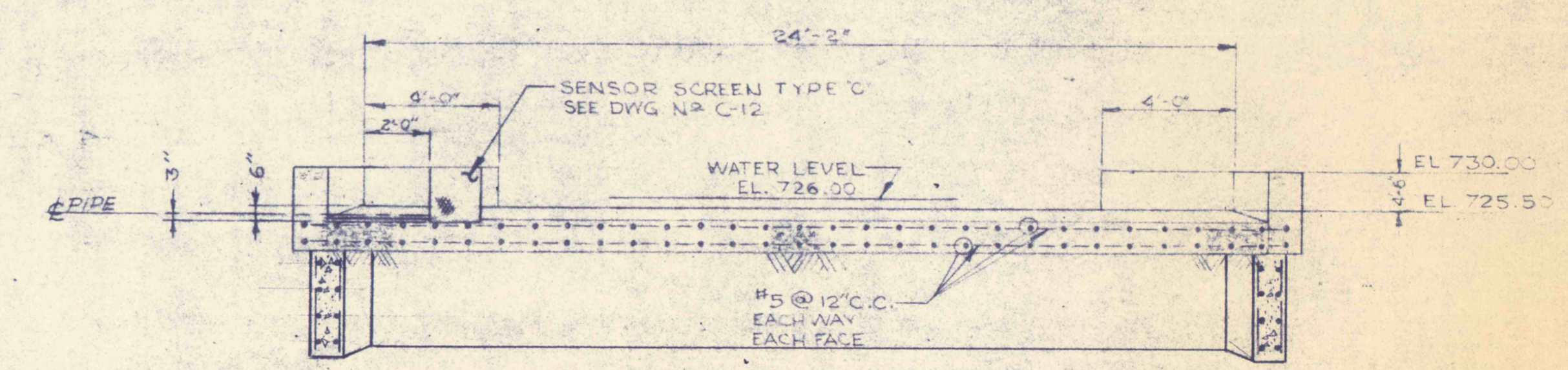
**SPILLWAY NO. 1
DWG. C-1**



SECTION C-C



SECTION B-B



SECTION A-A

INSTALL HAND-PLACED MORTARED RIP-RAP CHANNEL 24\"/>



REVISIONS	
CONSTRUCTION DETAILS-SPILLWAY NO. 1	
CONSTRUCTION OF TREATMENT FACILITIES FOR ACID MINE DRAINAGE RAUSCH CREEK WATERSHED SCHUYLKILL COUNTY, PENNSYLVANIA	
JOB NO. 6805 DATE: NOV. 1969 SCALE: 1/4" = 1'-0" DRAWN: C. J. HANCOCK APPROVED: THOMAS H. RILE	DRAWING NO. C-27
RESEARCH & DEVELOPMENT CO. INC. consulting engineers POTTSVILLE PENNSYLVANIA	TAMAGUA