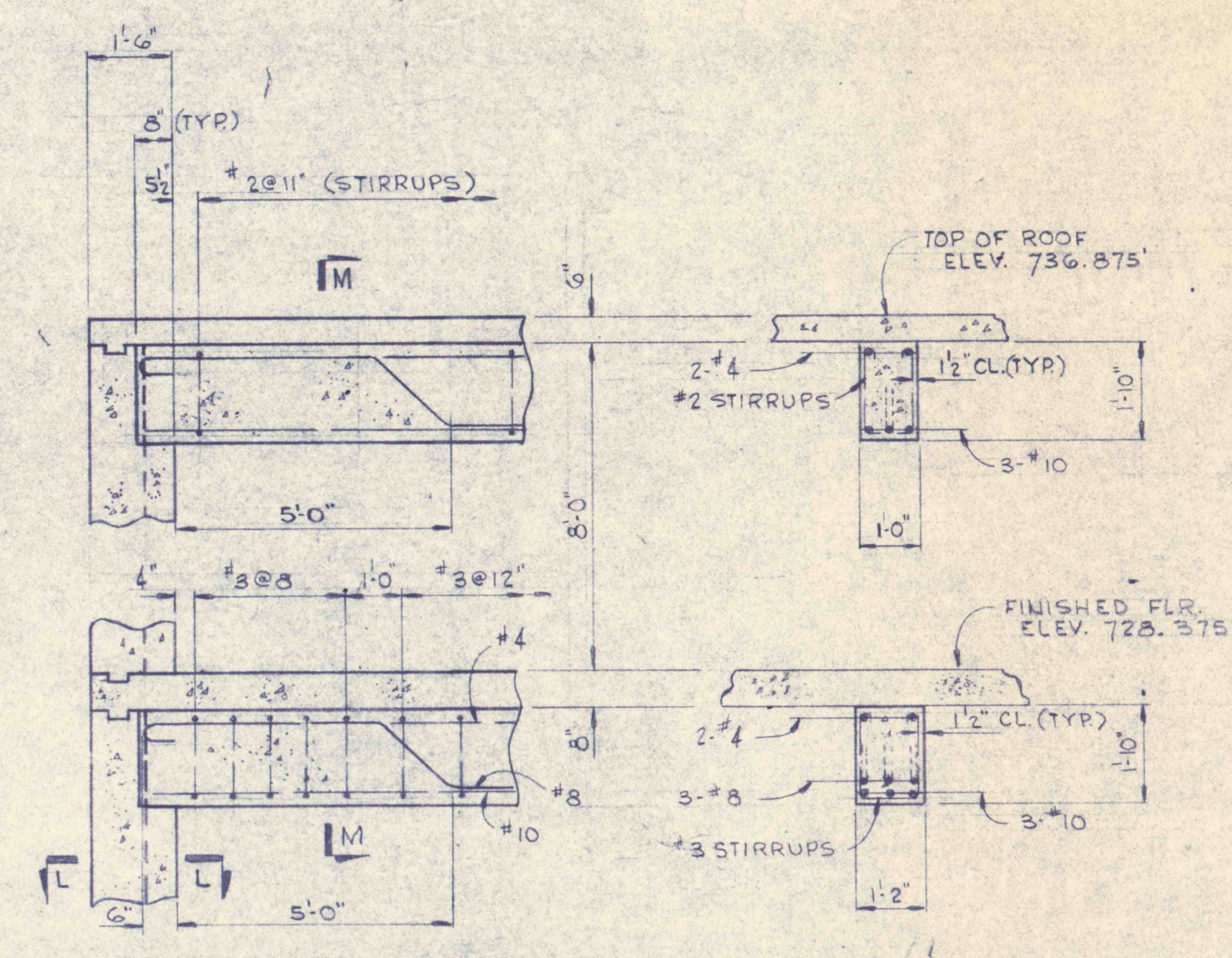
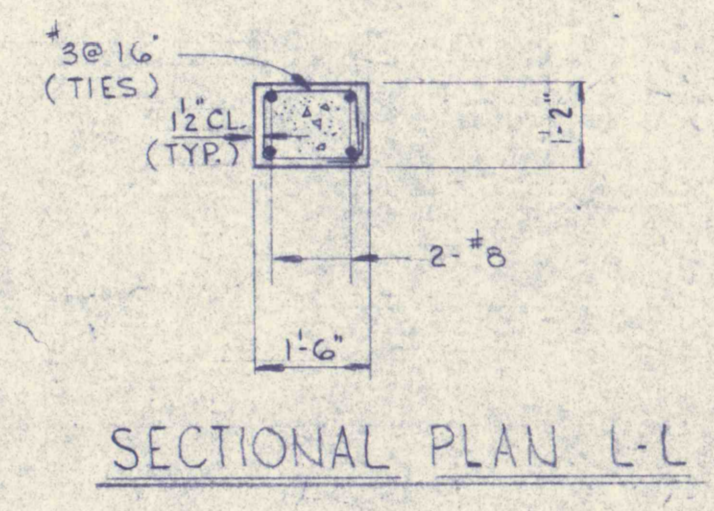


SECTIONAL PLAN F-F
(DWG. C-18)

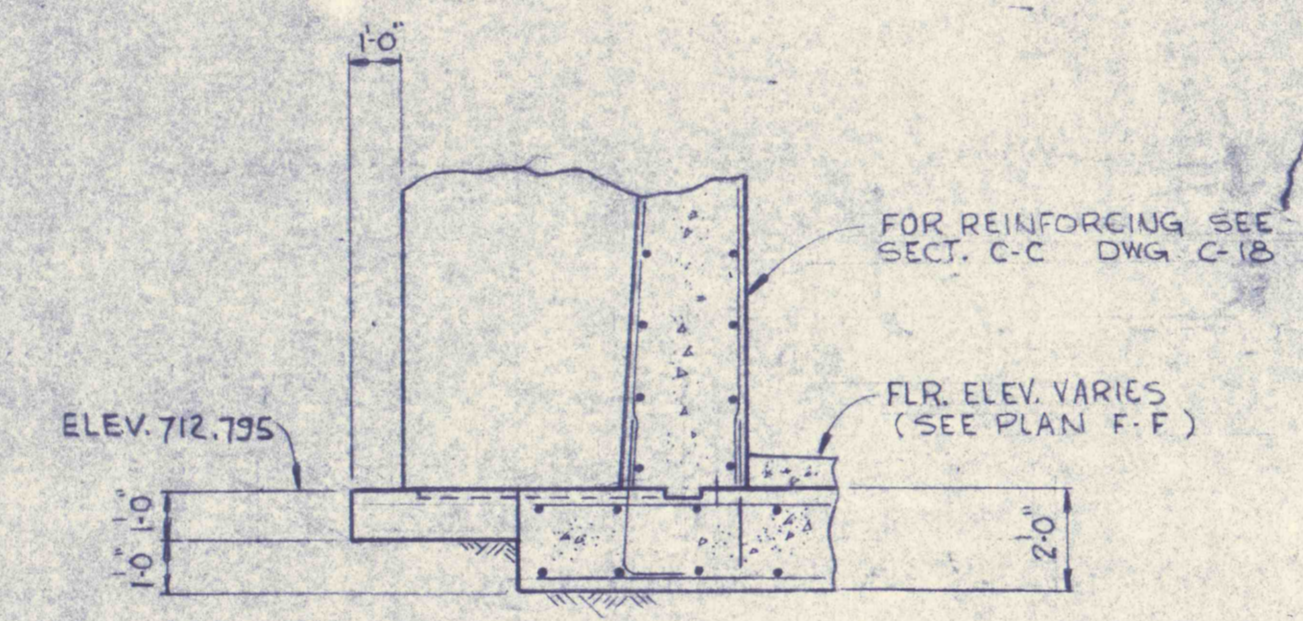


SECTION K-K
DWG. C-18

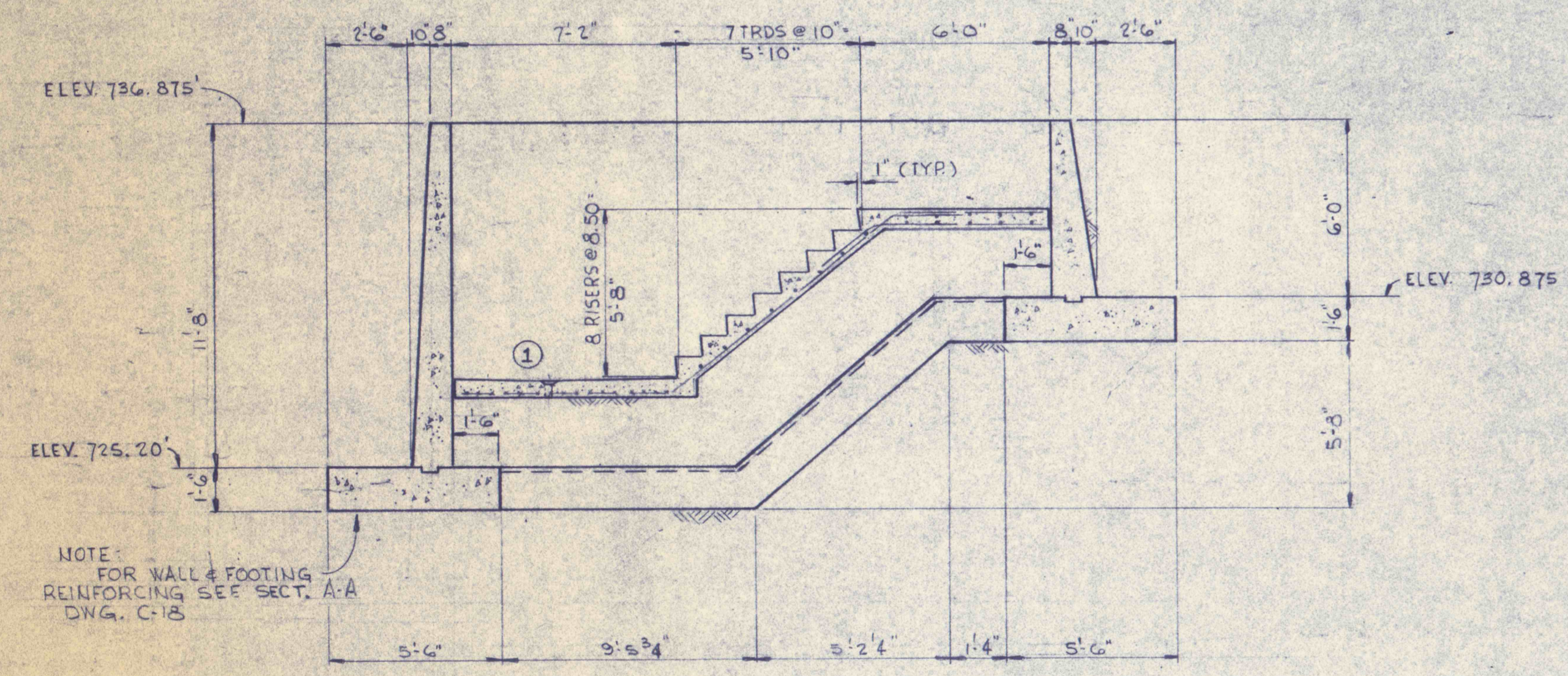
SECTION M-M



SECTIONAL PLAN L-L



SECTION H-H (AS SHOWN)
SECTION N-N (OPP. HAND)



SECTION E-E
DWG. C-18

NOTE:
FOR WALL & FOOTING
REINFORCING SEE SECT. A-A
DWG. C-18

- REF. DWG'S. GENERAL NOTES.
- C-19 SLUDGE THICKENER MECH. SEE DWG. C-18
 - C-21 SLUDGE HOLDING PIT & PUMP FDN. DETAILS.
 - C-20 SLUDGE THICKENER - PUMP ROOM-MECH

1 12/4/77 FLOOR DRAIN AS INDICATED	
REVISIONS	
SLUDGE THICKENER - STRUCTURAL	
CONSTRUCTION OF TREATMENT FACILITIES FOR ACID MINE DRAINAGE	
RAUSCH CREEK WATERSHED	
SCHUYLKILL COUNTY PENNSYLVANIA	
JOB NO: 6805 DATE: 1 DEC. 1970 SCALE: 1" = 10' DRAWN: P.E. APPROVED:	DRAWING NO: C-37
ANTHRACITE RESEARCH & DEVELOPMENT CO. INC. consulting engineers POTTSVILLE PENNSYLVANIA TAMAQUA	