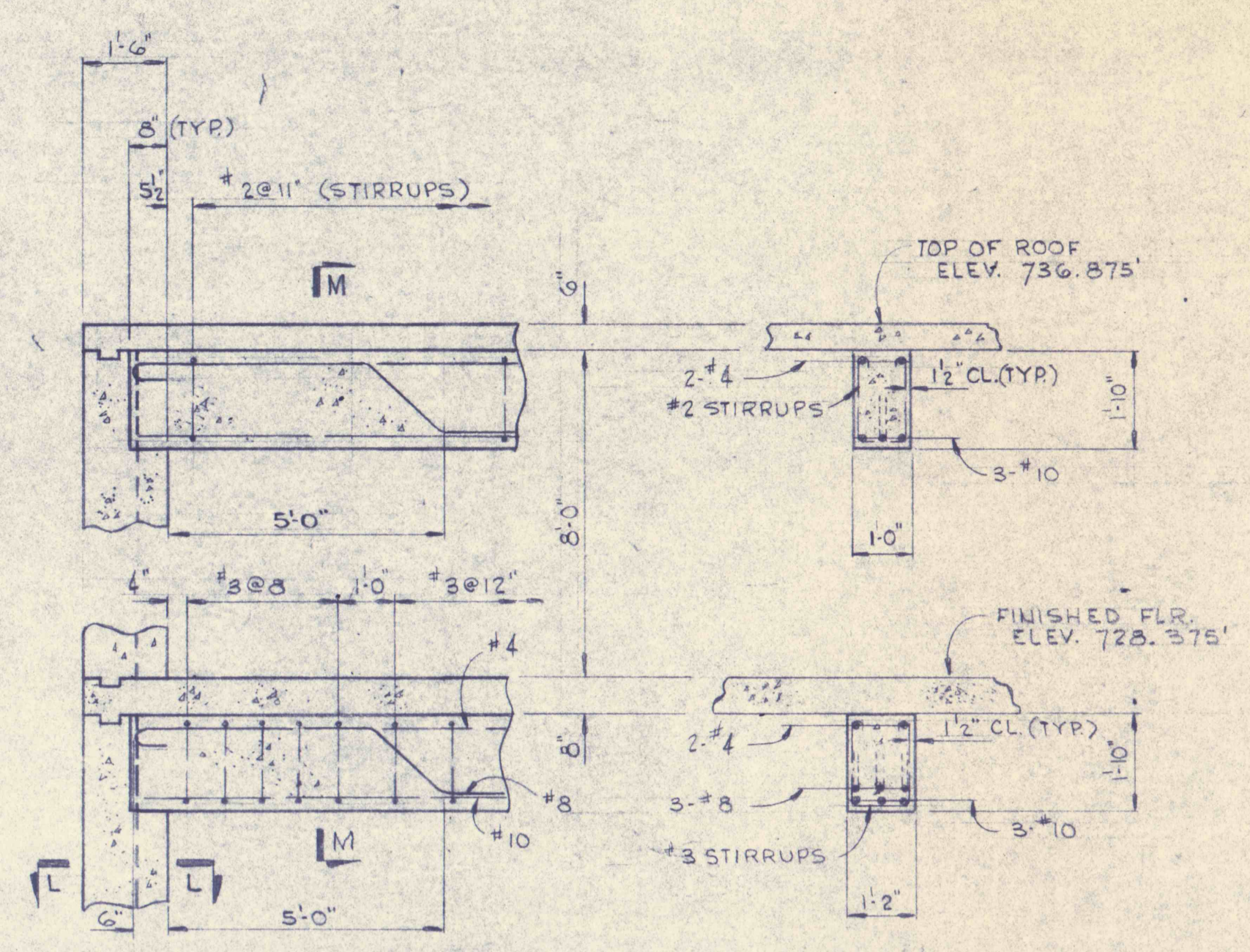
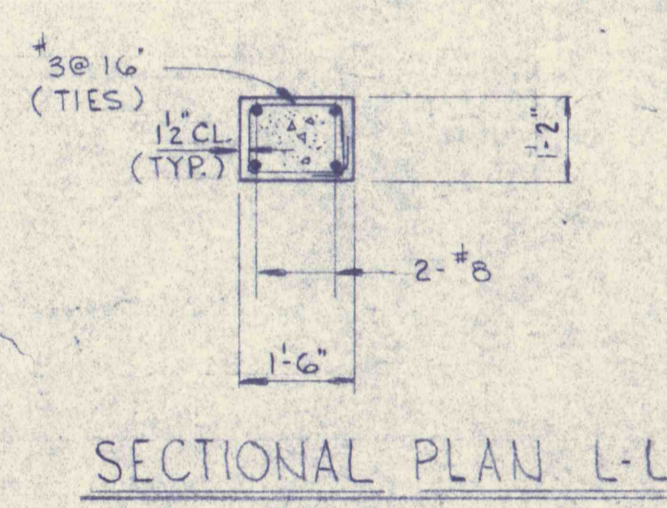


SECTIONAL PLAN F-F
(DWG. C-18)

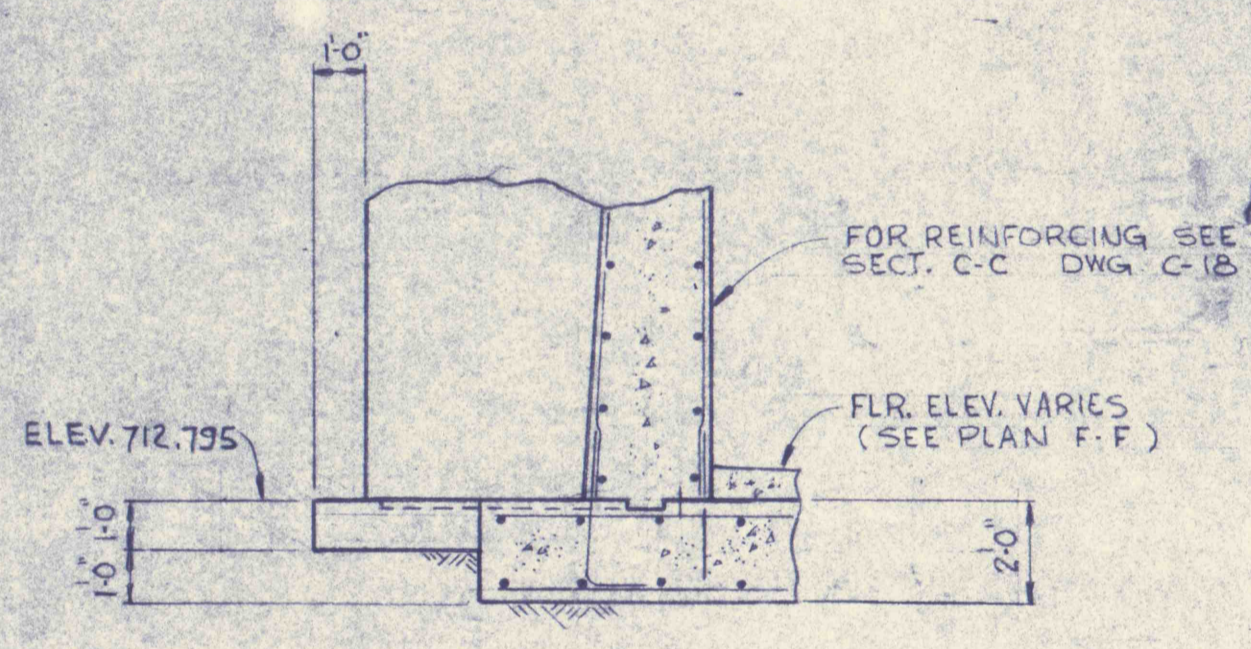


SECTION K-K
DWG. C-18

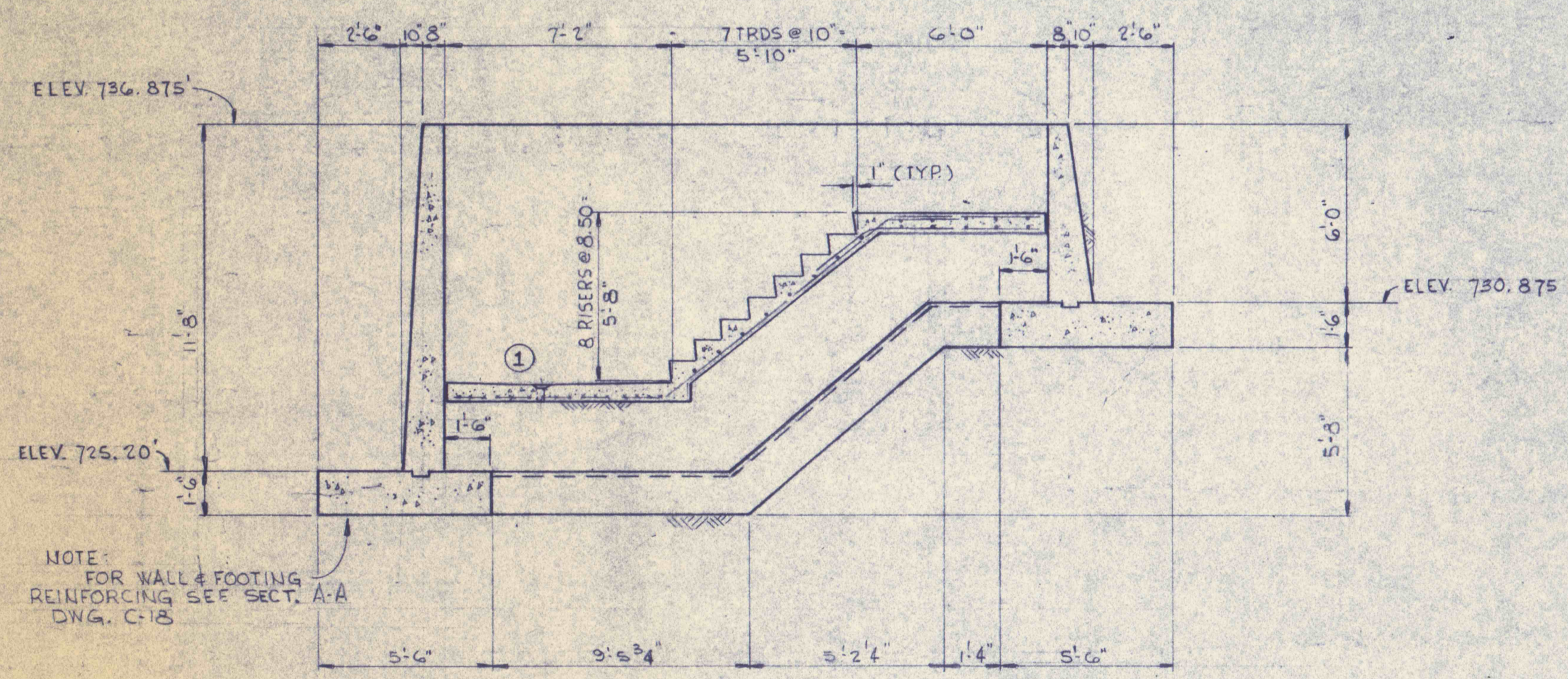
SECTION M-M



SECTIONAL PLAN L-L



SECTION H-H (AS SHOWN)
SECTION N-N (OPR. HAND)



SECTION E-E
DWG. C-18

- REF. DWG'S. GENERAL NOTES.
- C-19 SLUDGE THICKENER MECH. SEE DWG. C-18
 - C-21 SLUDGE HOLDING-PIT & PUMP FDN. DETAILS.
 - C-20 SLUDGE THICKENER - PUMP ROOM-MECH.

1	12/47	FLOOR DRAIN AS INDICATED
REVISIONS		
SLUDGE THICKENER - STRUCTURAL		
CONSTRUCTION OF TREATMENT FACILITIES FOR ACID MINE DRAINAGE		JOB NO: 6805
RAUSCH CREEK WATERSHED		DATE: 1 DEC. 1970
SCHUYLKILL COUNTY PENNSYLVANIA		SCALE: 1/4" = 1'-0"
ANTHRACITE RESEARCH & DEVELOPMENT CO. INC.		DRAWN: P.B.
CONSULTING ENGINEERS		APPROVED:
POTTSVILLE	PENNSYLVANIA	TAMAQUA
DRAWING NO:		C-37