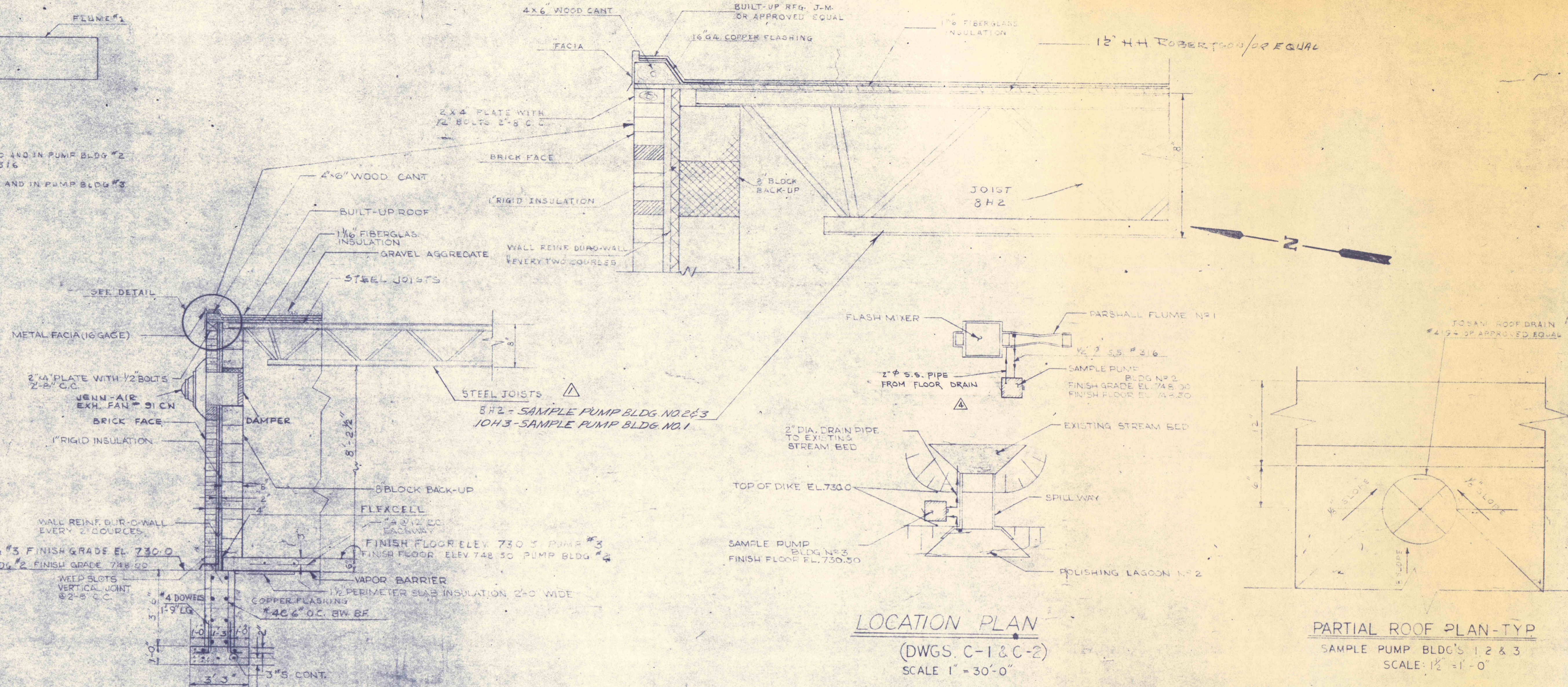


SCHEMATIC

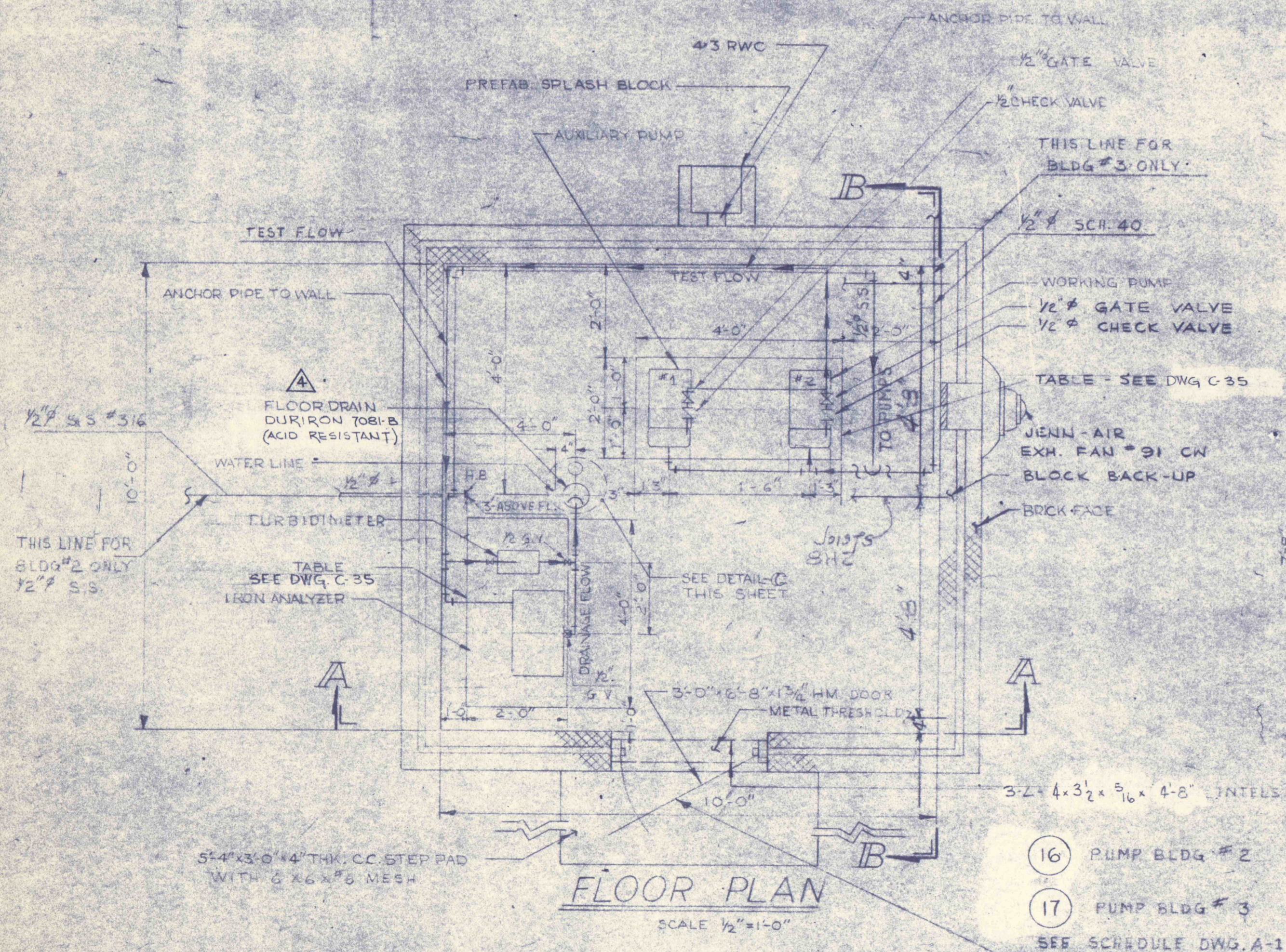
NOTE
 1. ALL PIPING TO AND IN PUMP BLDG #2 TO BE S.S. #316
 2. ALL PIPING TO AND IN PUMP BLDG #3 TO BE M.I.P.



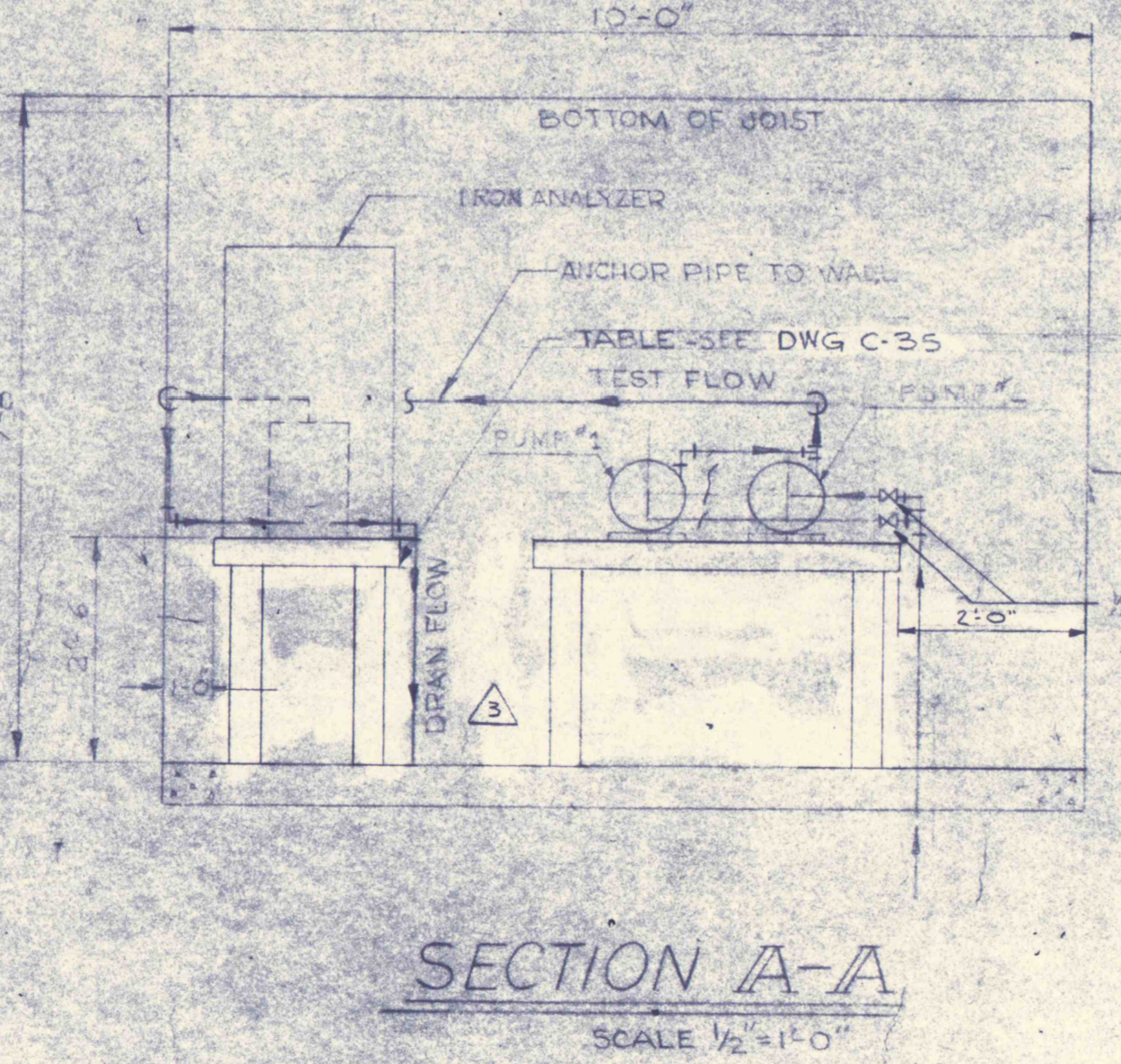
TYPICAL WALL SECTION
 SCALE 1/2"=1'-0"

LOCATION PLAN
 (DWGS. C-1 & C-2)
 SCALE 1"=30'-0"

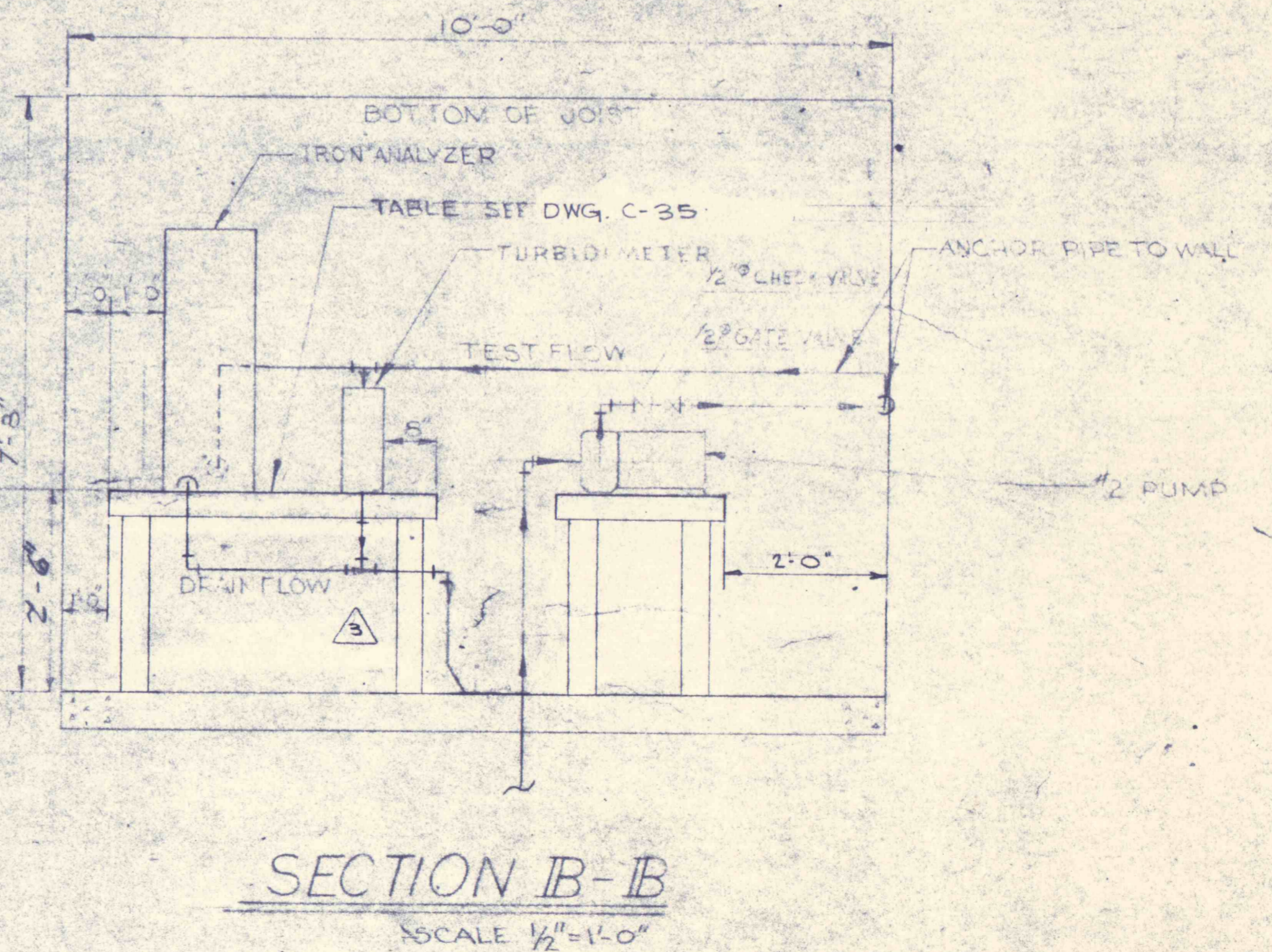
PARTIAL ROOF PLAN-TYP
 SAMPLE PUMP BLDG'S 1, 2 & 3
 SCALE 1/2"=1'-0"



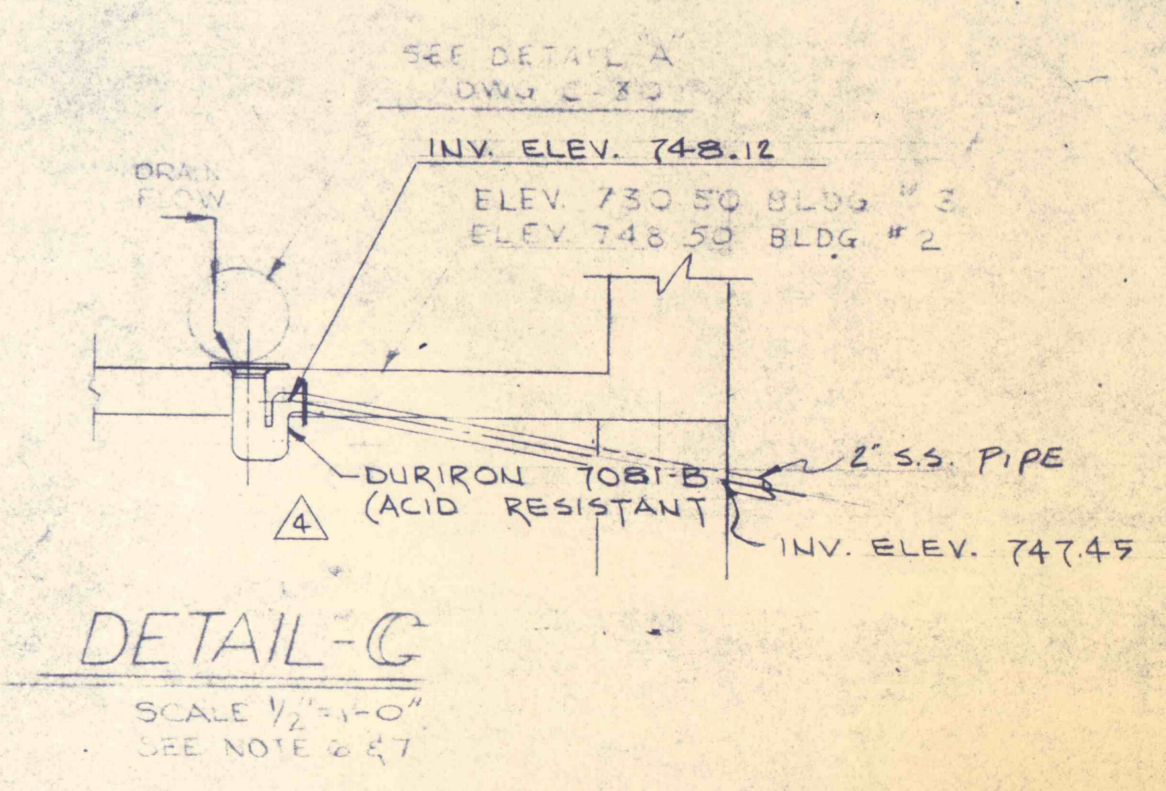
FLOOR PLAN
 SCALE 1/2"=1'-0"



SECTION A-A
 SCALE 1/2"=1'-0"



SECTION B-B
 SCALE 1/2"=1'-0"



DETAIL C
 SCALE 1/2"=1'-0"
 SEE NOTE 2 & 7

GENERAL NOTES:

- SEE DWG. NO. C-30 FOR ELEVATION VIEWS OF THIS BUILDING.
- ALL PIPES & FITTINGS 1/2" DIA. UNLESS OTHERWISE SPECIFIED.
- ALL PIPES FOR BUILDING NO. 2 TO BE STAINLESS STEEL #316.
- ANCHOR ALL PIPES TO WALLS APPROVED ANCHORS.
- SUB-SOIL MUST BE UNIFORMLY WELL COMPACTED. A 6" BASE COURSE OF WELL COMPACTED STONE OR GRAVEL MUST BE PROVIDED BEFORE THE SLAB IS POURED.
- DRAIN TO ROTARY TO SUT DRAINAGE AREA.
- ALL PIPES ENTERING BUILDING MUST BE SLEEVED.
- ALL PUMPS & EQUIPMENT TO BE BOLTED TO TABLES IN FIELD.
- ALL PIPING & FITTINGS TO PUMPS IN SAMPLE PUMP BLDG #2 SHALL BE #316 STAINLESS STEEL.
- ALL PIPING & FITTINGS TO PUMPS IN SAMPLE PUMP BLDG #3 SHALL BE SCHEDULE 40.

NO.	DATE	REVISION	BY
4	3-24-79	REV. FLOOR DRAIN - AS IND.	(F.D.S.)
3	2-12-79	REV. TABLES AS IND.	(F.D.S.)
2	11-17-78	REV. FLR DRAIN AS IND.	
1	6-24-78	CHANGE R/W JOIST TO 10H3 JOIST IN SAMPLE PUMP BLDG #1	

REVISIONS

SAMPLE PUMP BUILDING NO. 2 & 3	
CONSTRUCTION OF TREATMENT FACILITIES FOR ACID MINE DRAINAGE RAUSCH CREEK WATERSHED SCHUYLKILL COUNTY, PENNSYLVANIA	JOB NO. 6805 DATE: Nov. 1970 SCALE: AS NOTED DRAWN: E.M. HERTON APPROVED: THIS SHEET
ANTRACITE RESEARCH & DEVELOPMENT CO. INC. consulting engineers POTTSVILLE PENNSYLVANIA	TAMAQUA C-31