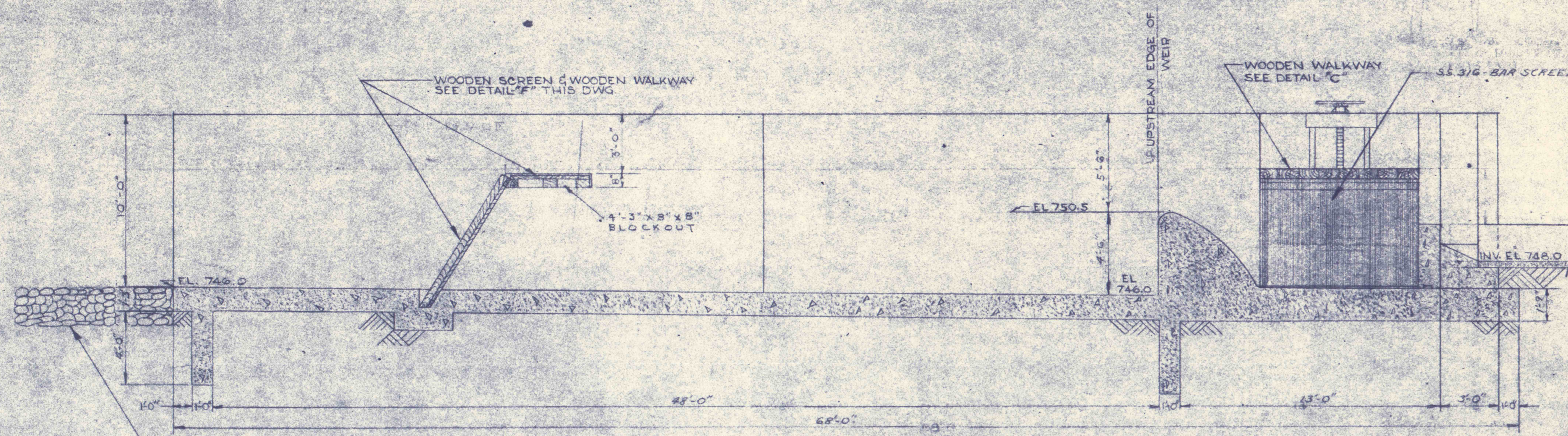
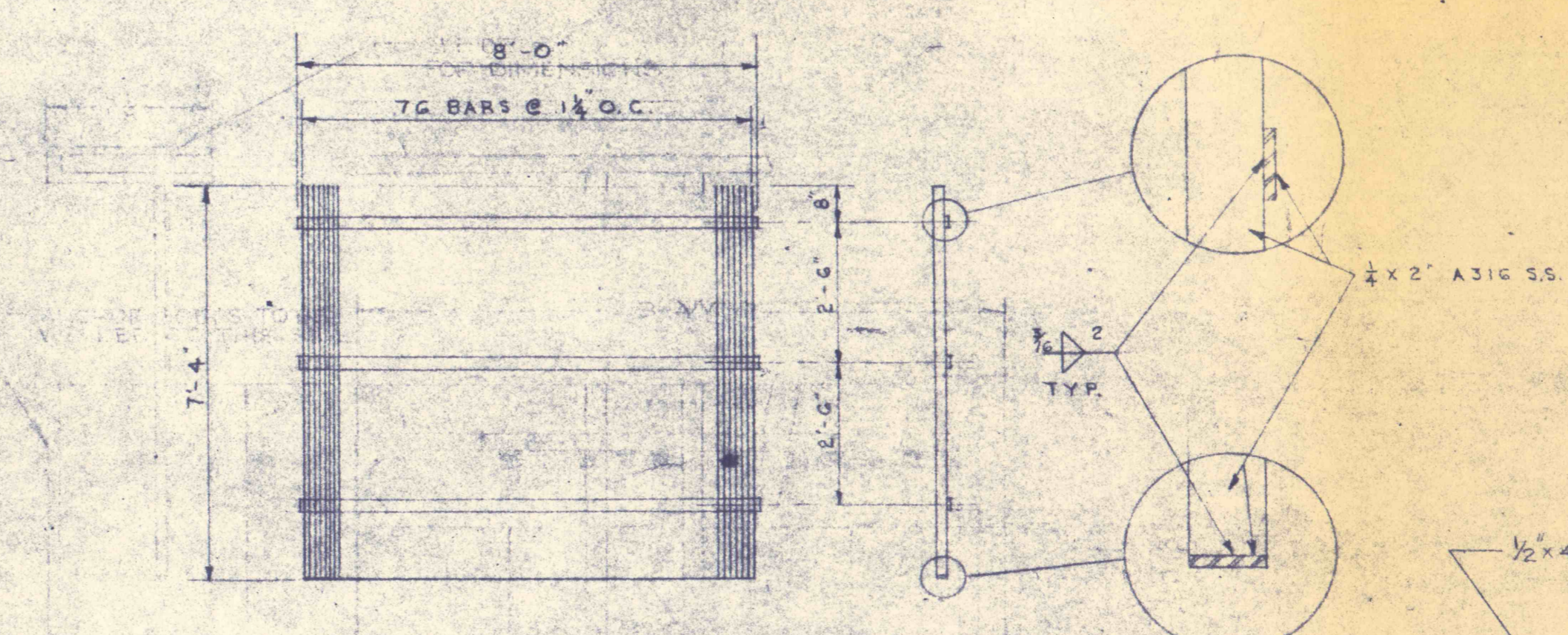


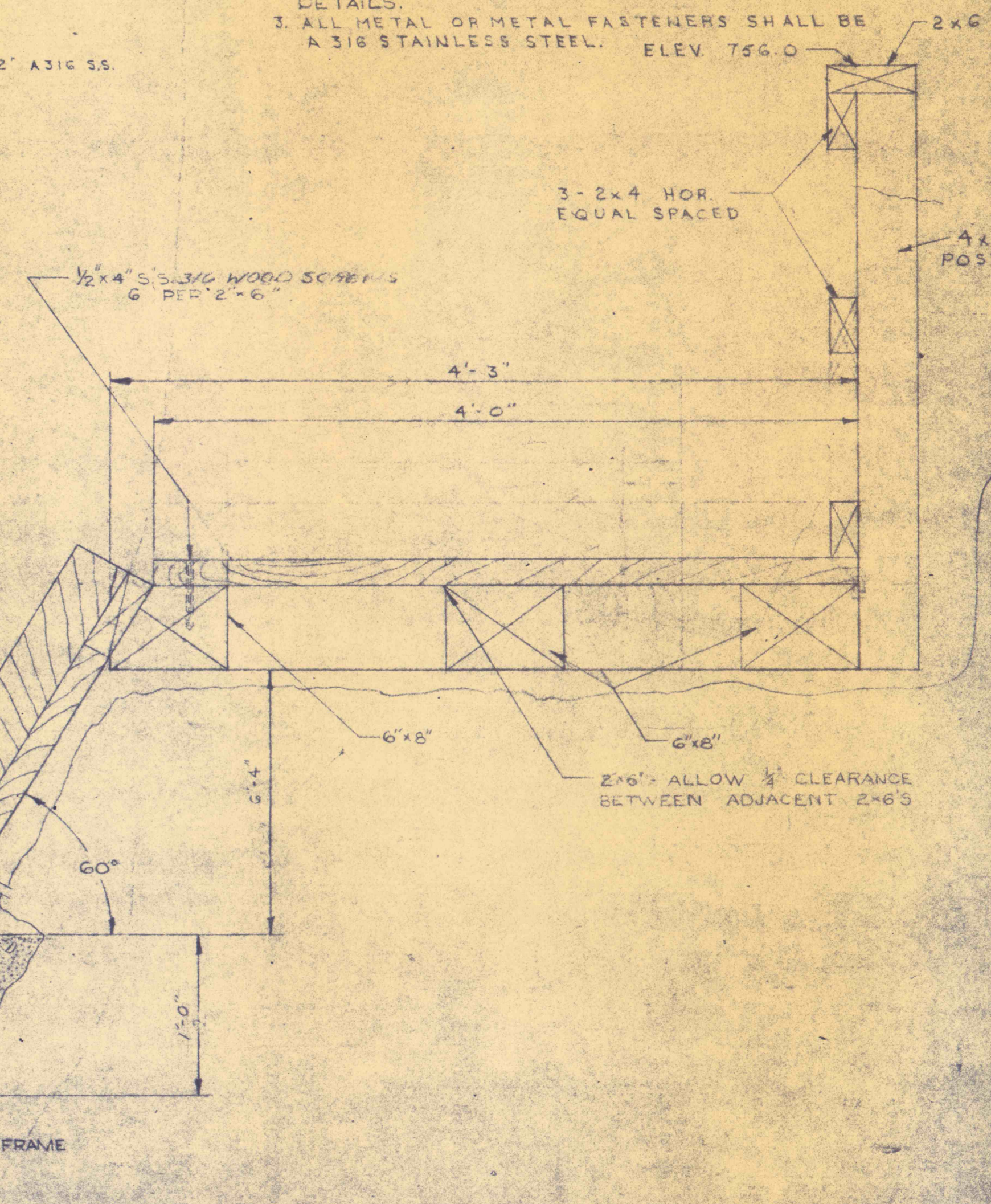
- GENERAL NOTES**
1. ALL LUMBER USED ON THIS DWG. UNLESS OTHERWISE SPECIFIED IS TO BE SOUTHERN PINE 545 TREATED IN CREOSOTE.
 2. REFER TO DWG. NO. C-7/D FOR STRUCTURAL DETAILS.
 3. ALL METAL OR METAL FASTENERS SHALL BE A 316 STAINLESS STEEL. ELEV. 756.0



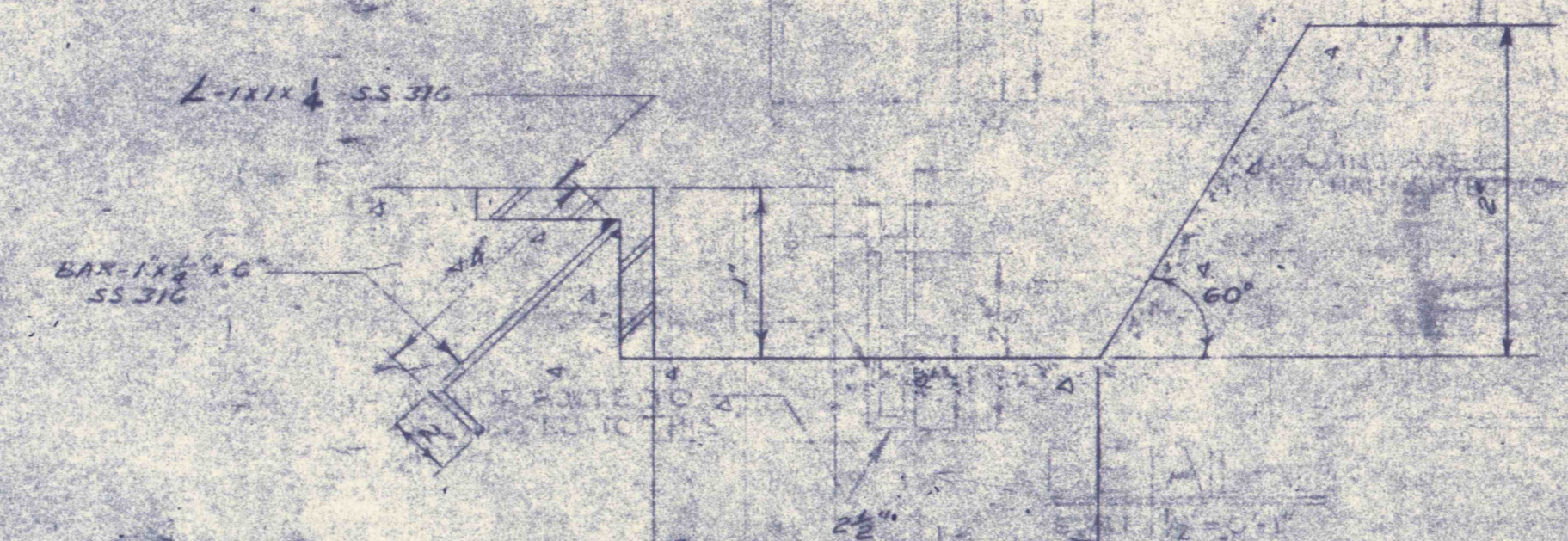
SECTION A-A
SCALE 1/4" = 1'-0"



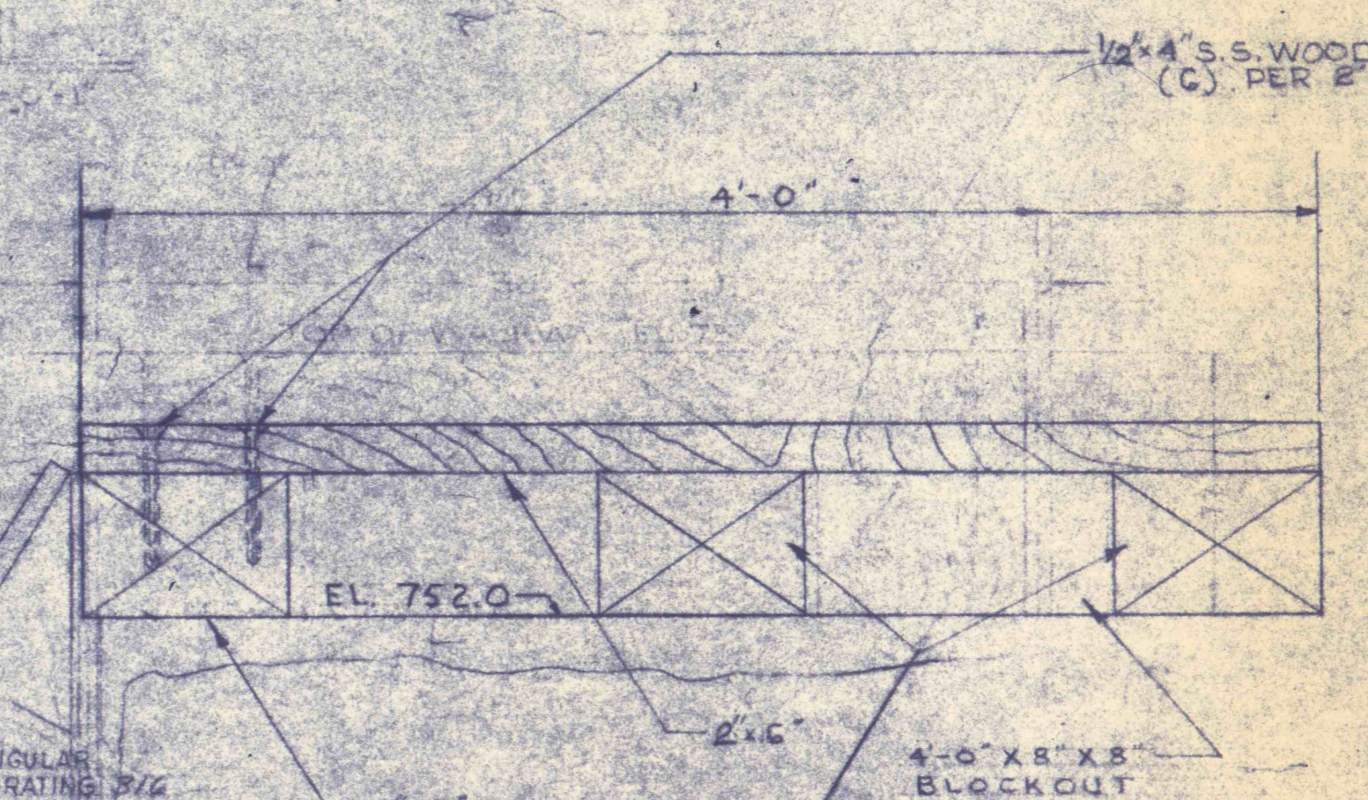
DETAIL G
SCALE 1/4" = 1'-0"



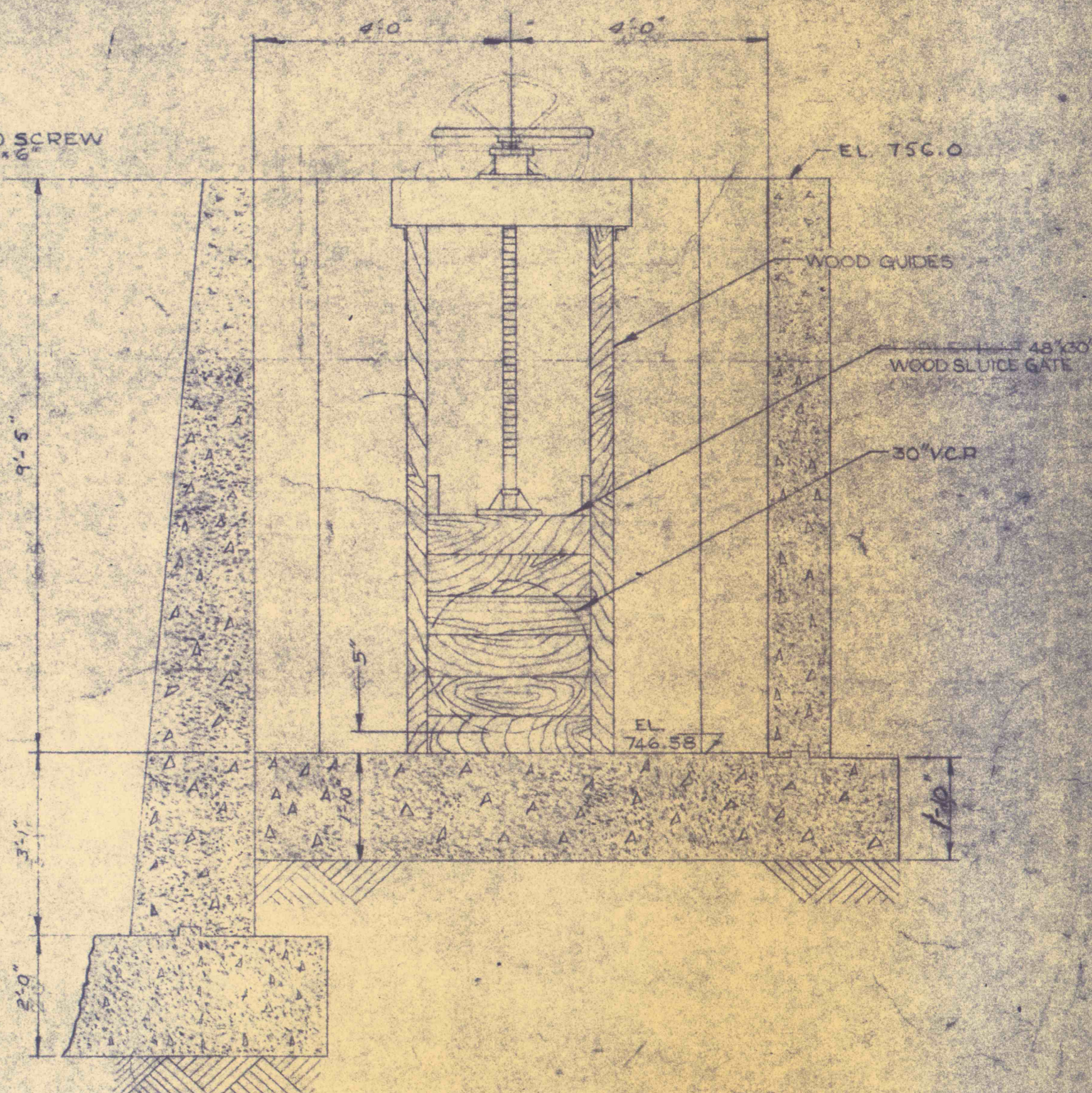
DETAIL F
SCALE 1/8" = 0'-1"



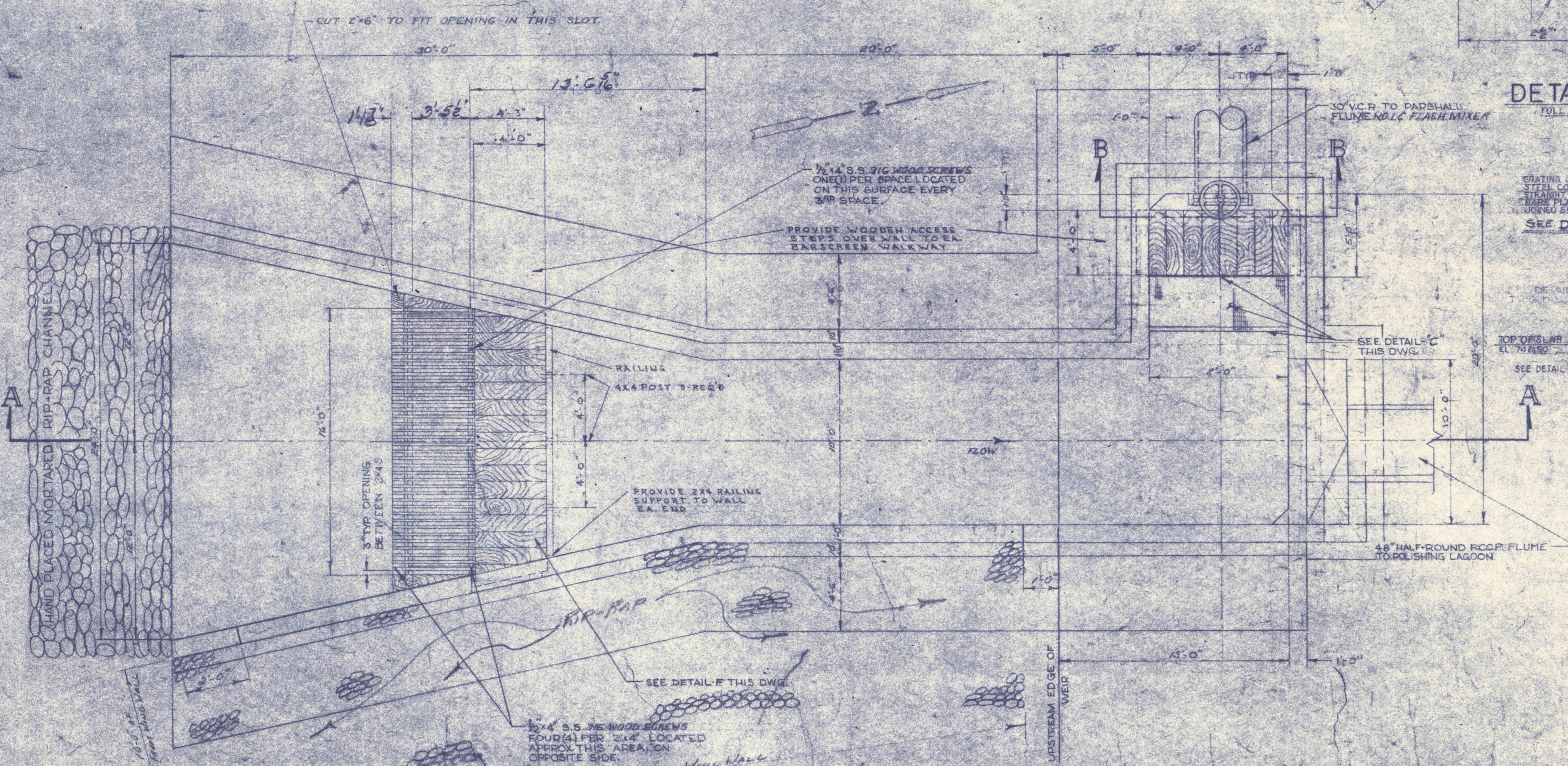
DETAIL D
FULL SIZE



DETAIL C
NO SCALE



SECTION B-B
SCALE 1/2" = 1'-0"



PLAN
DWG. C-14-C2
SCALE 1/4" = 1'-0"

NO.	DATE	REVISIONS	BY
3	7-15-1	CHANGED NOTE	(F.S.)
2	6-15-1	REVISED HEADWORKS DETAILS	V.L.B.
1	4-15-1	REVISED HEADWORKS DETAILS	V.L.B.

HEADWORKS-MECHANICAL

CONSTRUCTION OF TREATMENT FACILITIES OF ACID MINE WATERSHED
RAUSCH CREEK WATERSHED
 SCHUYLKILL COUNTY, PENNSYLVANIA

ANTHRACITE
 RESEARCH & DEVELOPMENT CO. INC.
 consulting engineers
 POTTSVILLE, PENNSYLVANIA

JOB NO. 61006
 DATE: NOV. 1979
 SCALE: AS SHOWN
 DRAWN: C.M. BUECHNER
 APPROVED: 11/27

DRAWING NO. **C-11**

