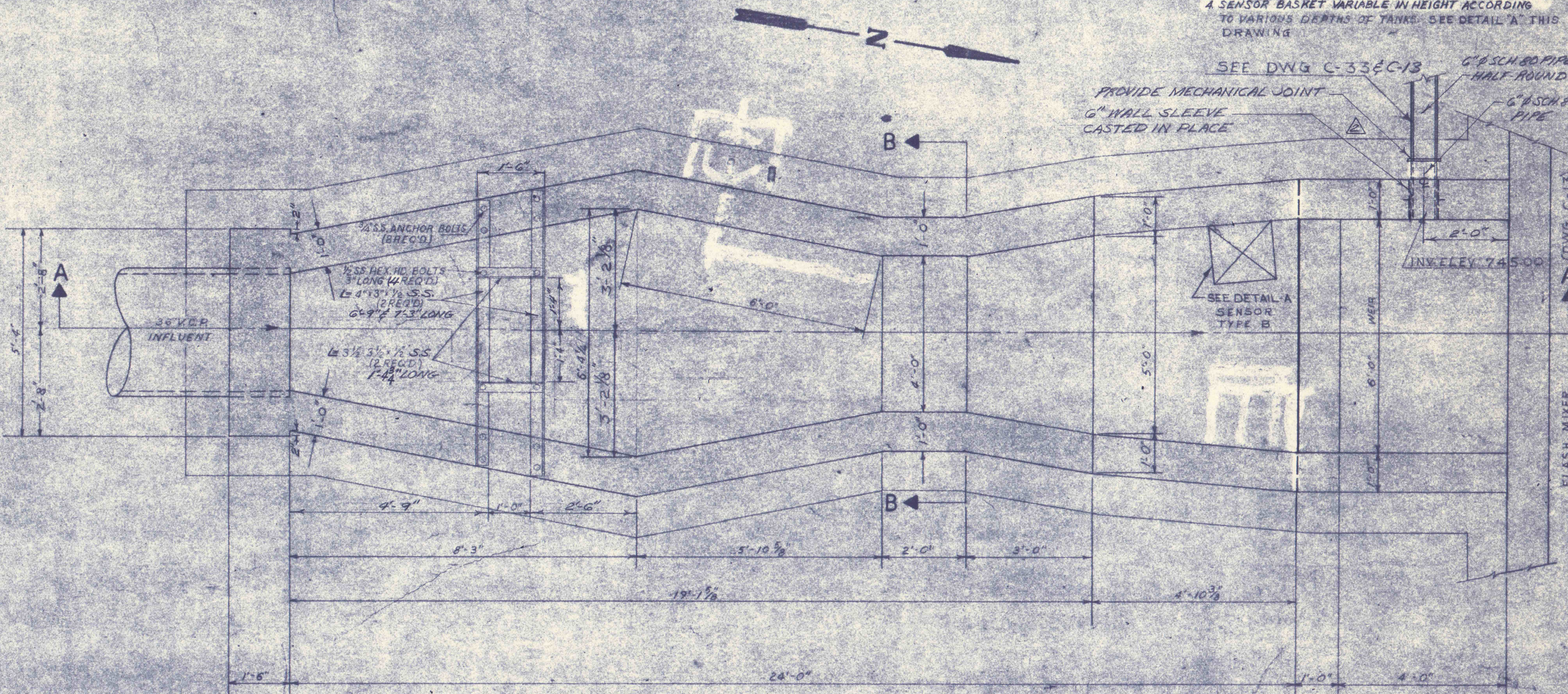
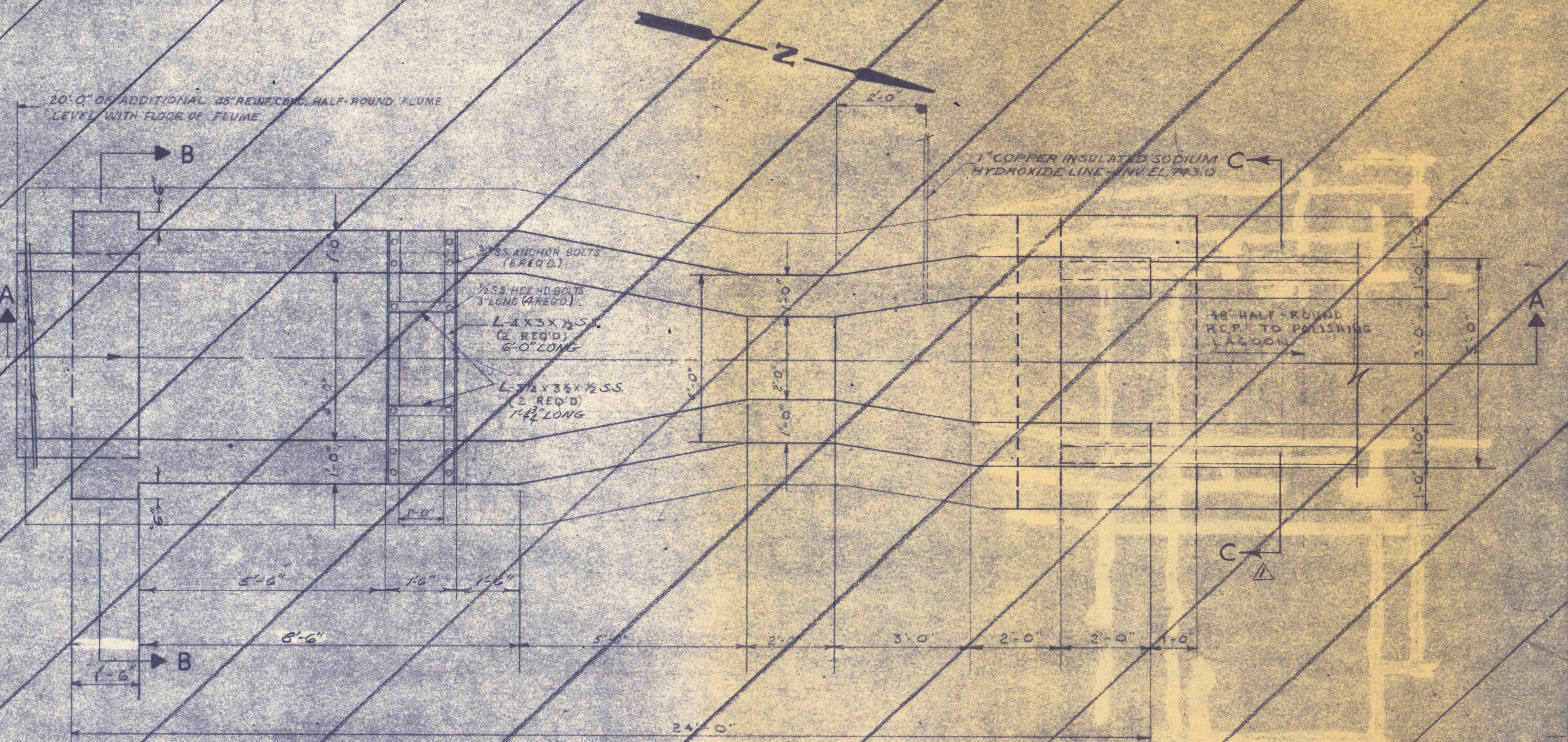


GENERAL NOTES:
 1. ALL CONSTRUCTION JOINTS BELOW WATER LEVEL TO HAVE 2" WATER STOP CONTINUOUS.
 2. REFER TO DWG. NO. C-1 FOR LOCATION OF PARSHALL FLUME OF FLOWMETER.
 3. REFER TO DWG. NO. 1 FOR ELECTRICAL DETAILS OF FLOWMETER.
 4. SENSOR BASKET VARIABLE IN HEIGHT ACCORDING TO VARIOUS DEPTHS OF TANKS. SEE DETAIL 'A' THIS DRAWING.

GENERAL NOTES:
 1. ALL CONSTRUCTION JOINTS BELOW WATER LEVEL TO HAVE 2" WATER STOP CONTINUOUS.

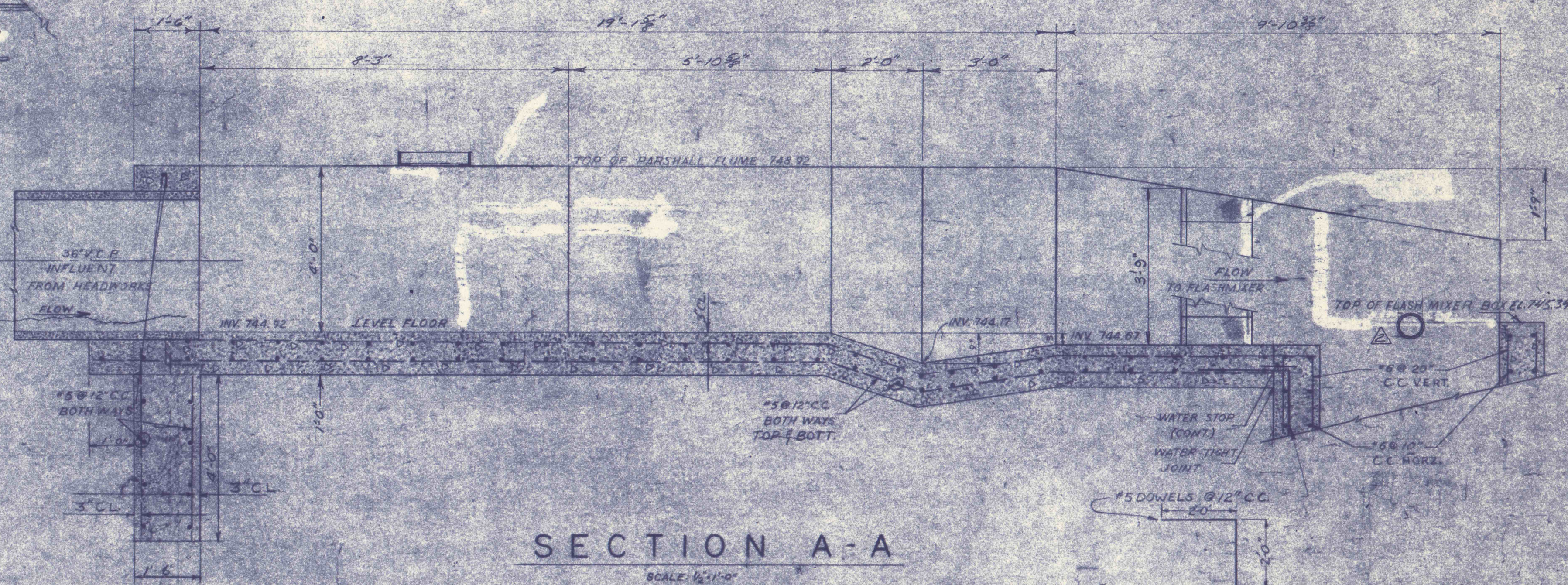


PLAN
 SCALE: 1/4" = 1'-0"

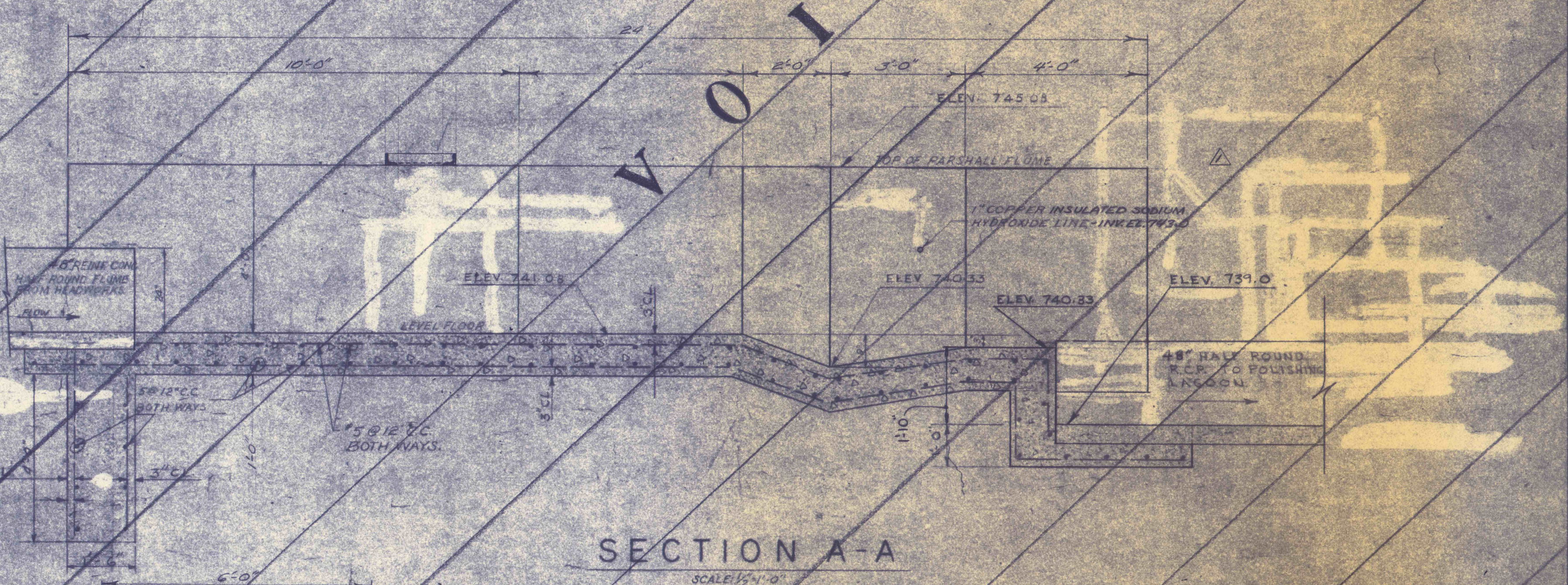


PLAN
 SCALE: 1/4" = 1'-0"

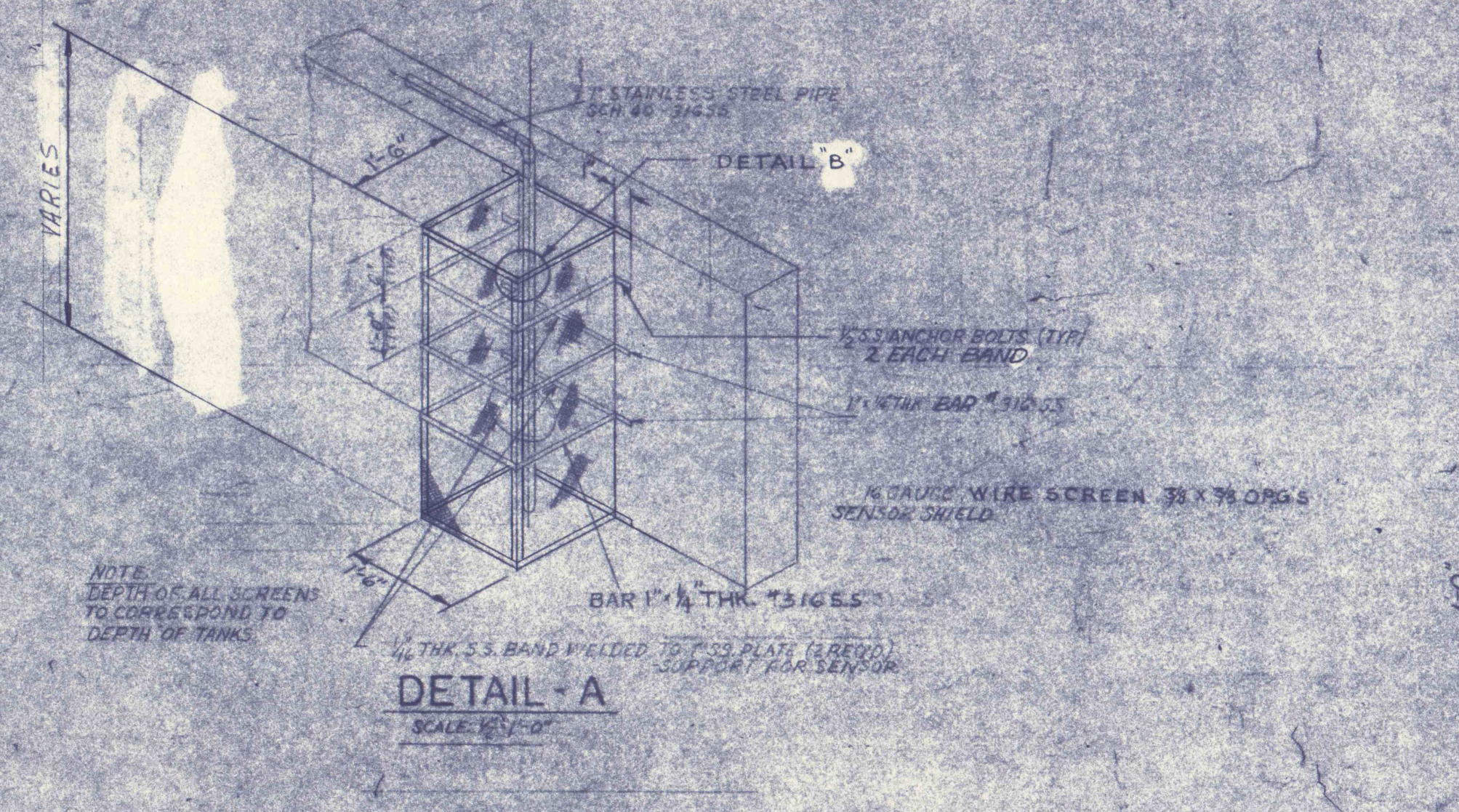
VOID



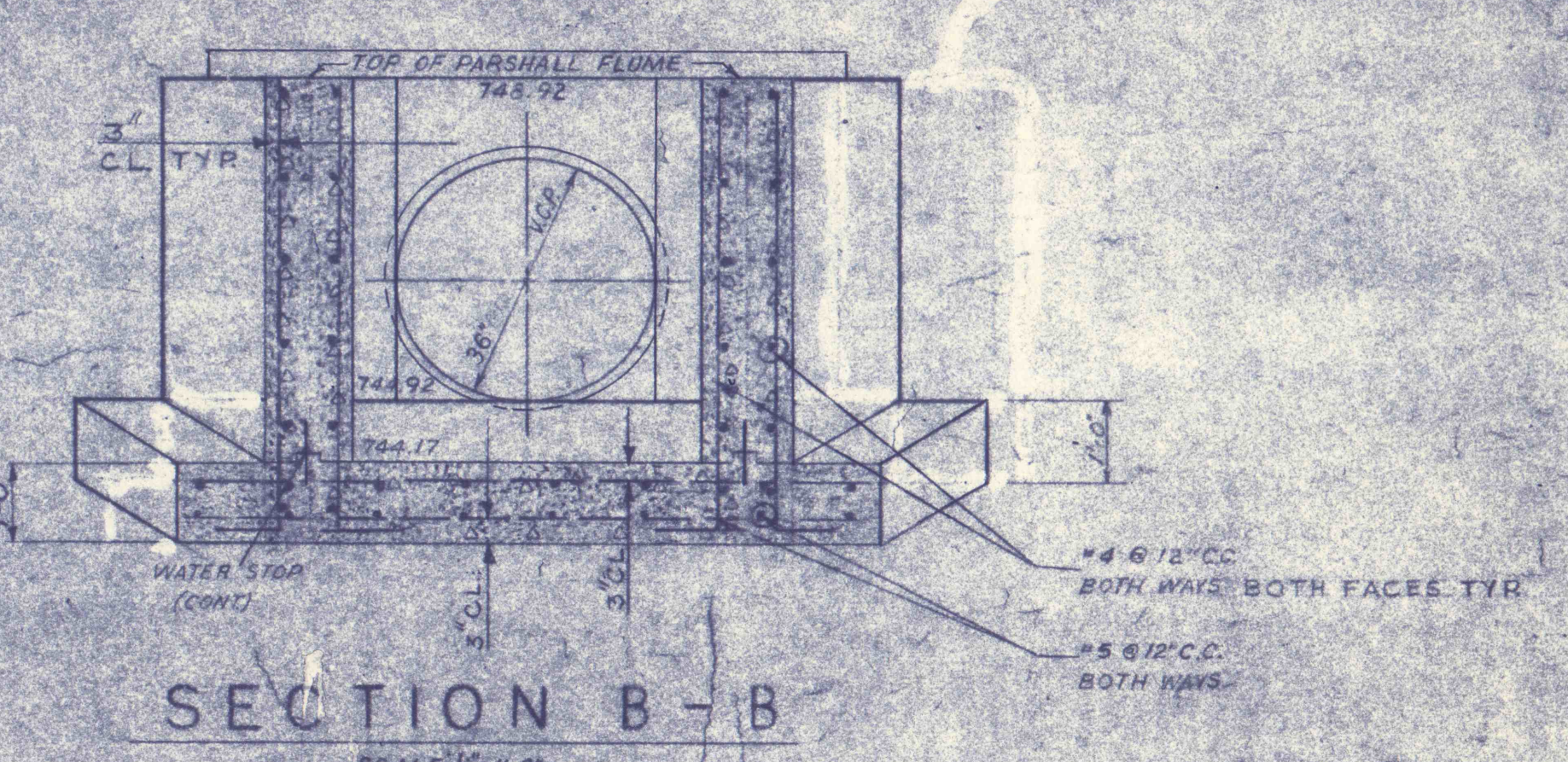
SECTION A-A
 SCALE: 1/4" = 1'-0"



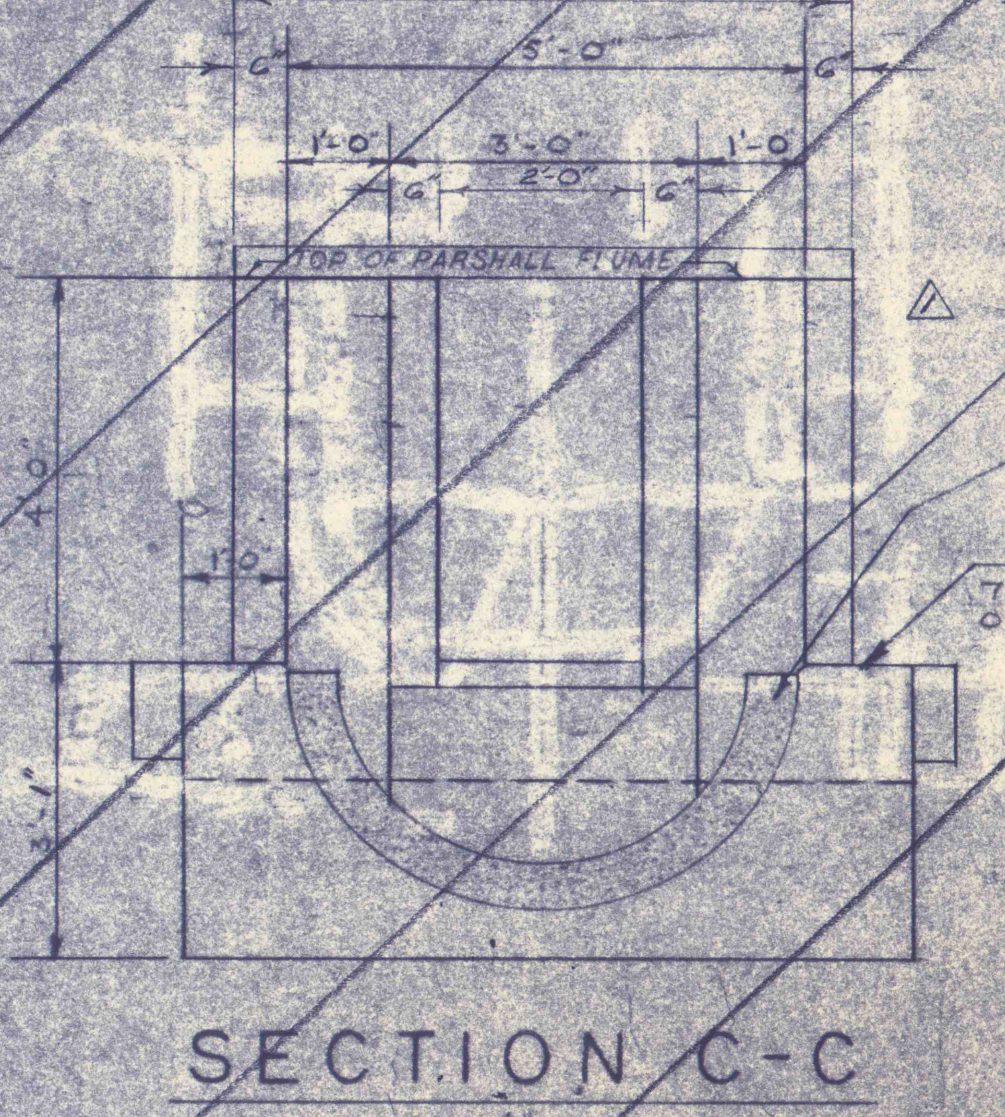
SECTION A-A
 SCALE: 1/4" = 1'-0"



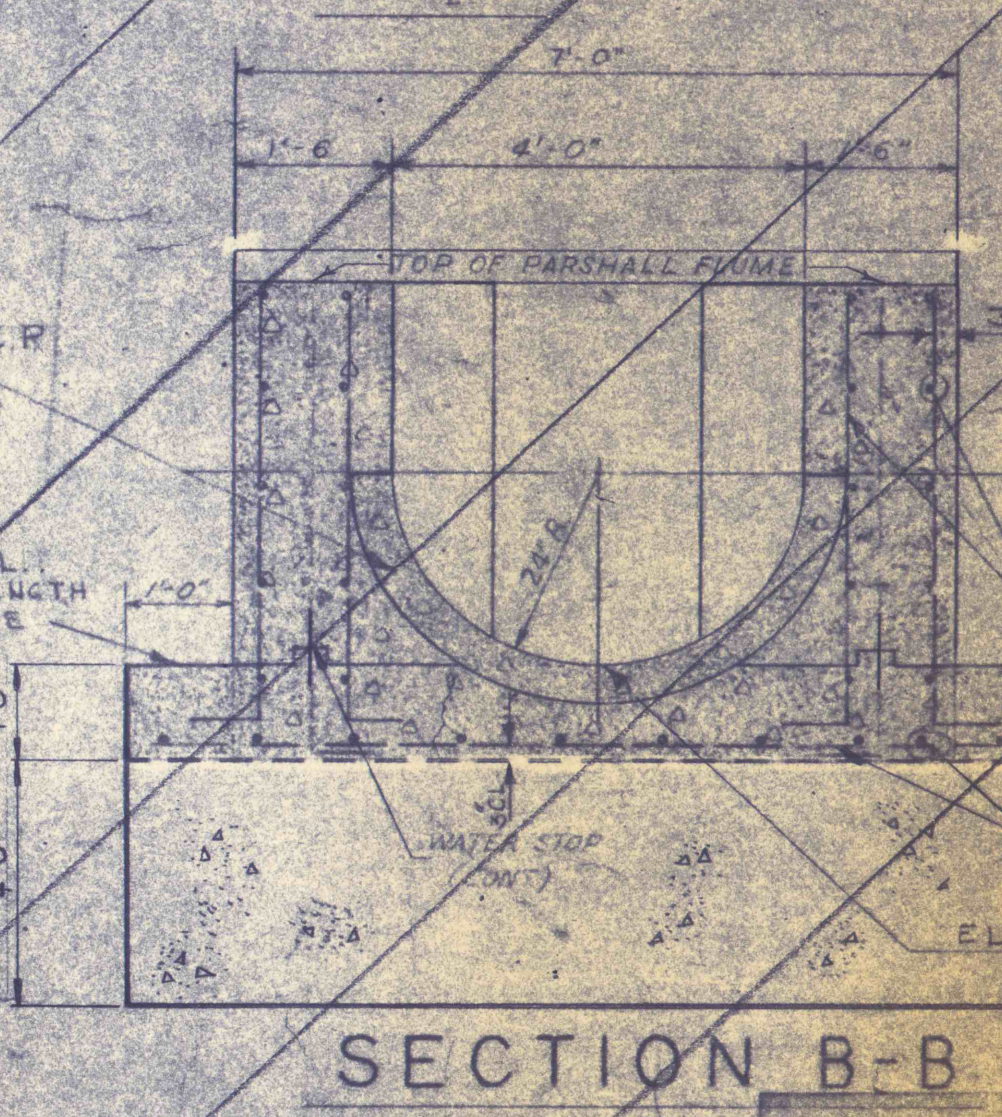
DETAIL A
 SCALE: 1/4" = 1'-0"



SECTION B-B
 SCALE: 1/4" = 1'-0"



SECTION C-C
 SCALE: 1/4" = 1'-0"



SECTION B-B
 SCALE: 1/4" = 1'-0"

PARSHALL FLUME NO. 1
 (SEE DWG. C-1 & C-2)

PARSHALL FLUME NO. 2
 (SEE DWG. C-4)

<p>REVISIONS</p> <p>6-15-70 6-15-70</p>	<p>PARSHALL FLUME NO. 1 STRUCTURAL AND MECHANICAL</p> <p>CONSTRUCTION OF TREATMENT FACILITIES FOR ACID MINE DRAINAGE RAUSCH CREEK WATERSHED SCHUYLKILL COUNTY PENNSYLVANIA</p> <p>ANTHRACITE RESEARCH & DEVELOPMENT CO. INC. consulting engineers POTTSVILLE PENNSYLVANIA TAMAGUA</p>	<p>JOB NO. 5805 DATE: NOV 1960 SCALE: AS NOTED DRAWN: J.S.N. APPROVED: T.H.R. VJL DRAWING NO. C-12</p>
---	--	---