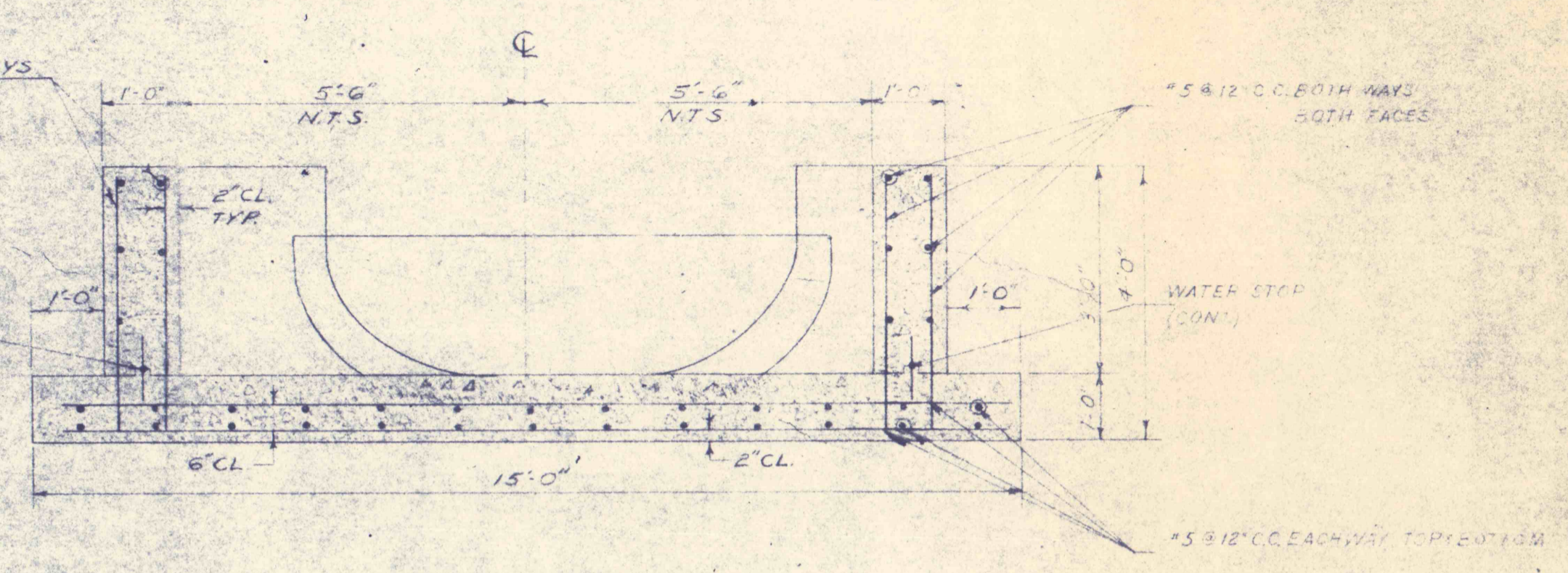
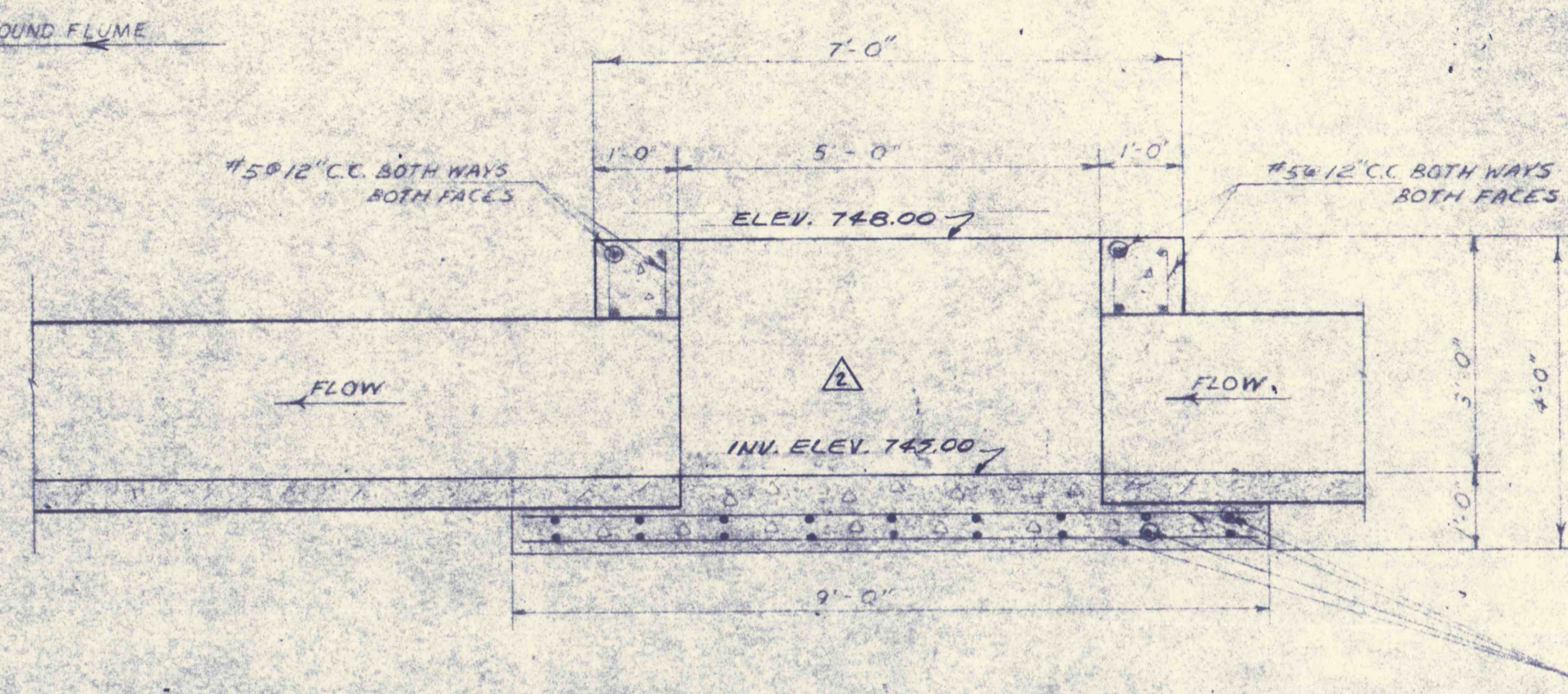
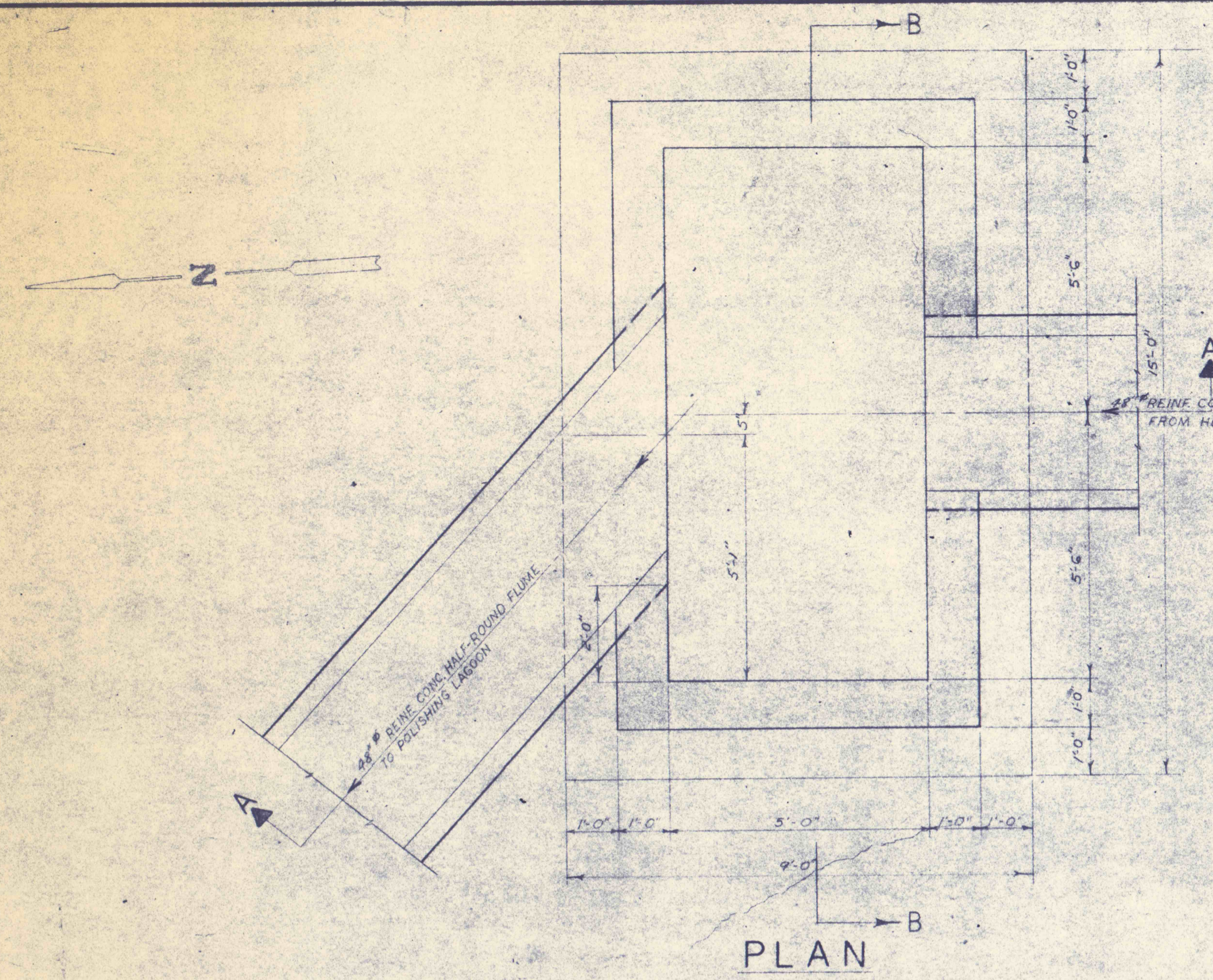
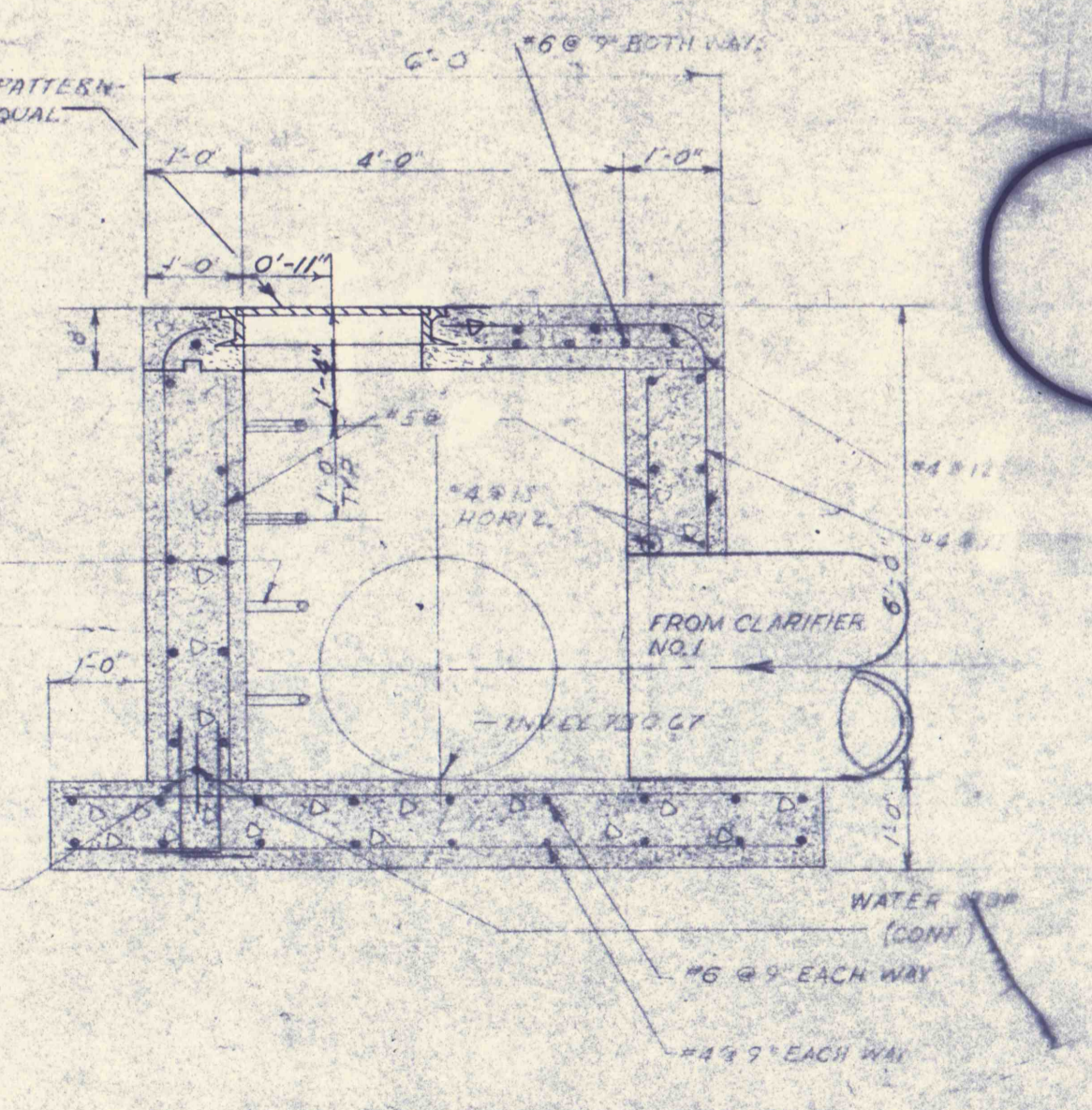
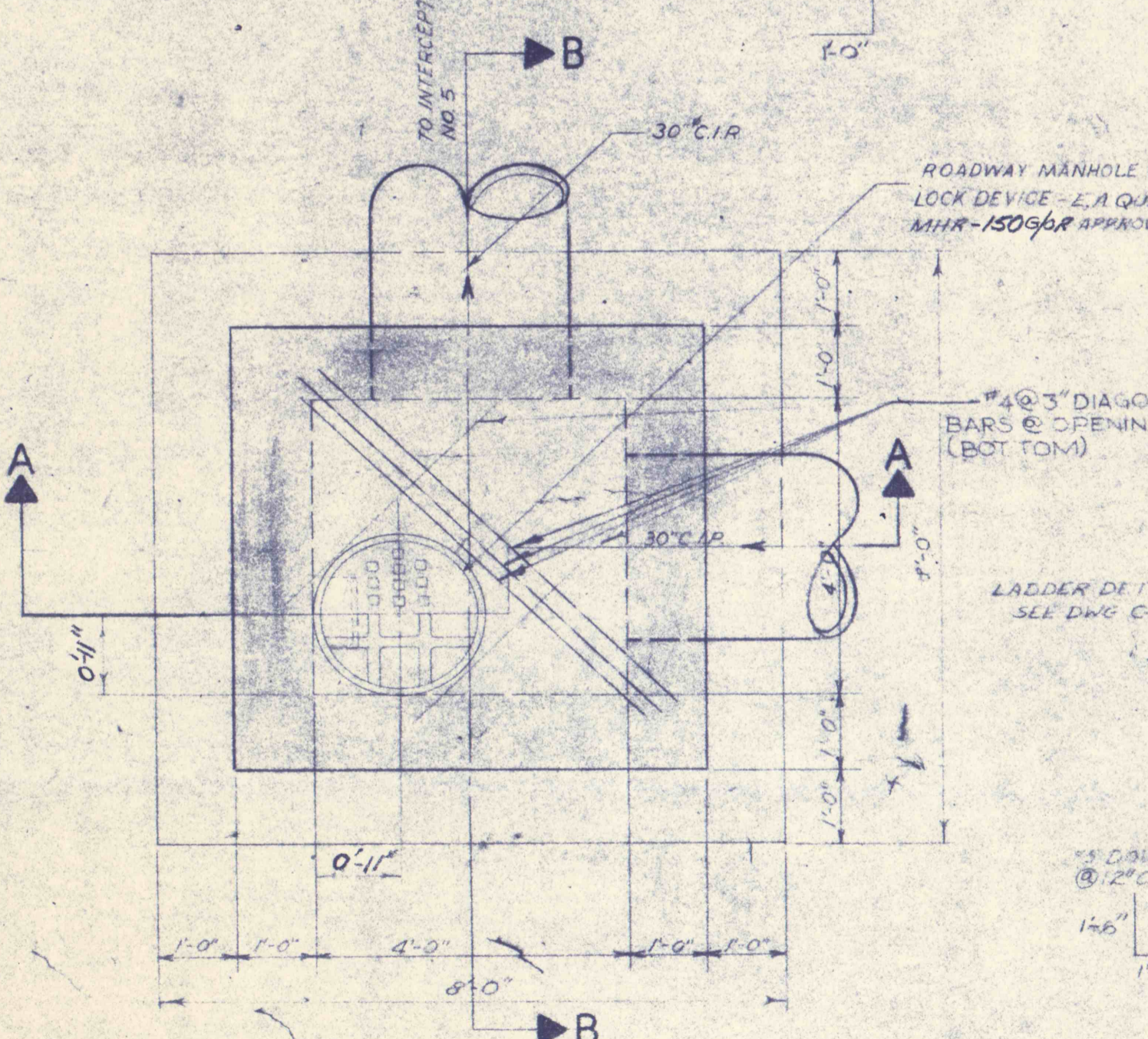
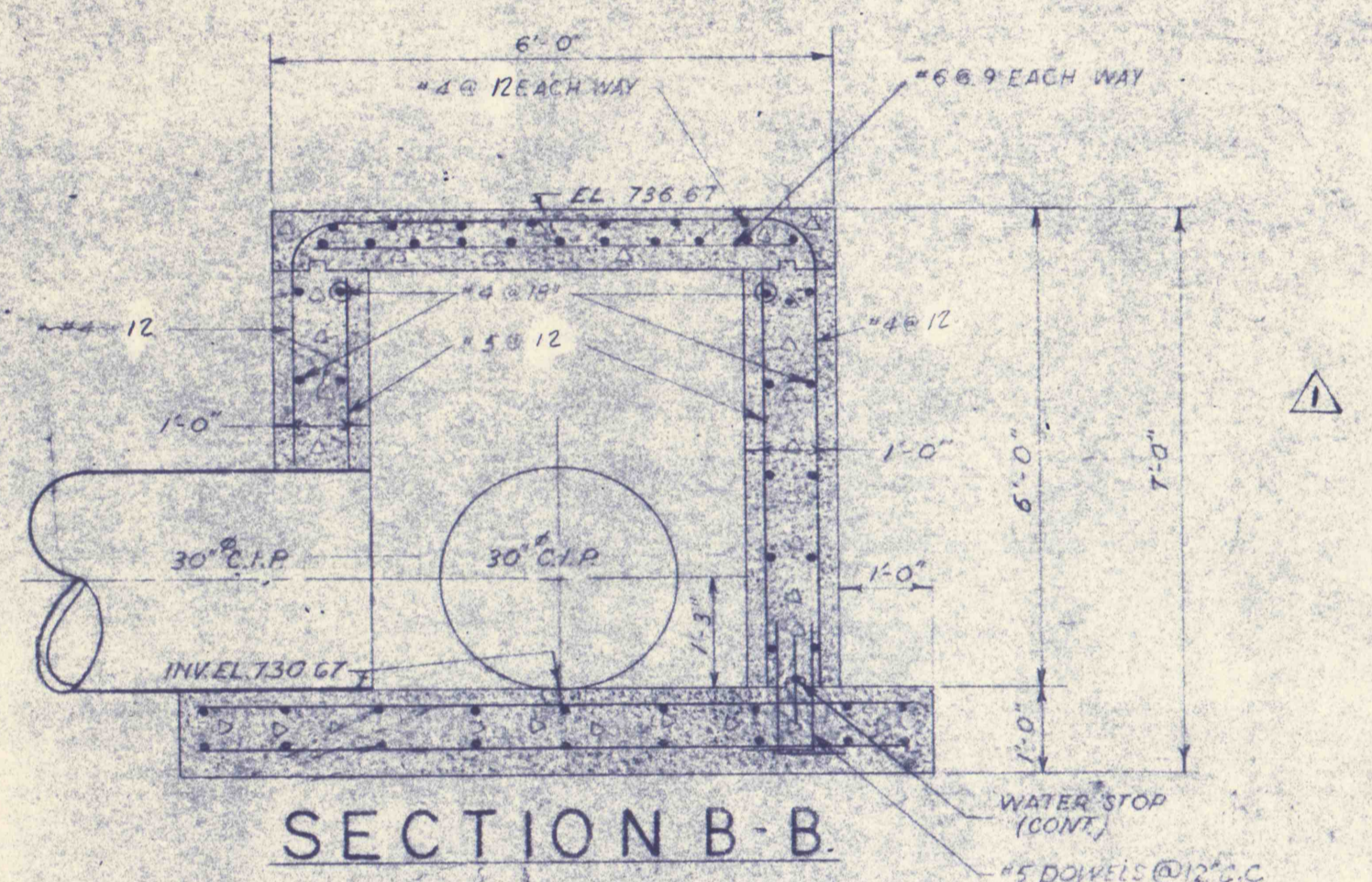


GENERAL NOTES
 1. ALL CONSTRUCTION JOINTS BELOW WATER LEVEL TO HAVE 9" WATER STOPS CONTINUOUS.
 2. REFER TO DWG C-1 FOR LOCATION OF ALL INTERCEPTOR BOXES ON THIS SHEET.

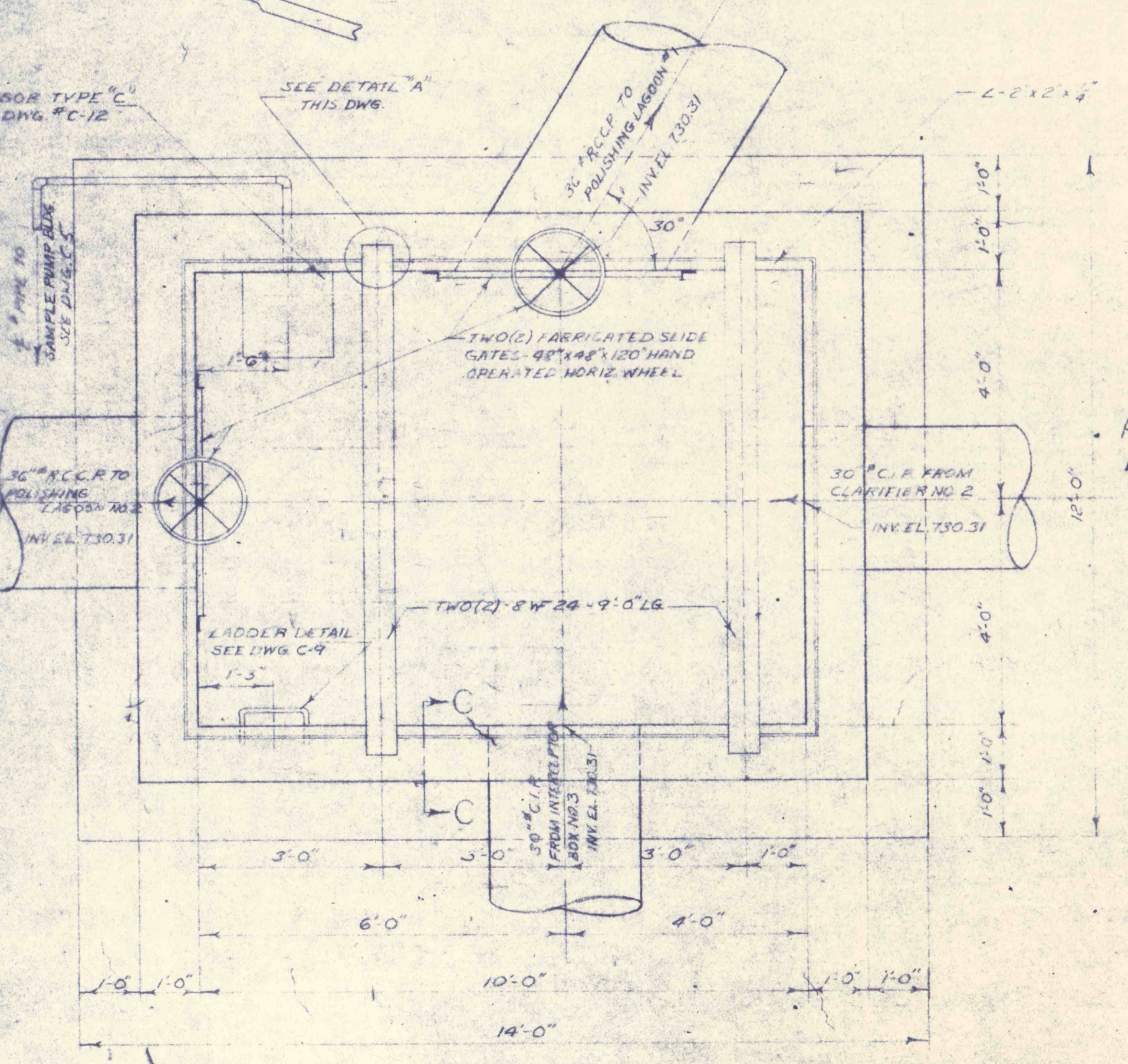
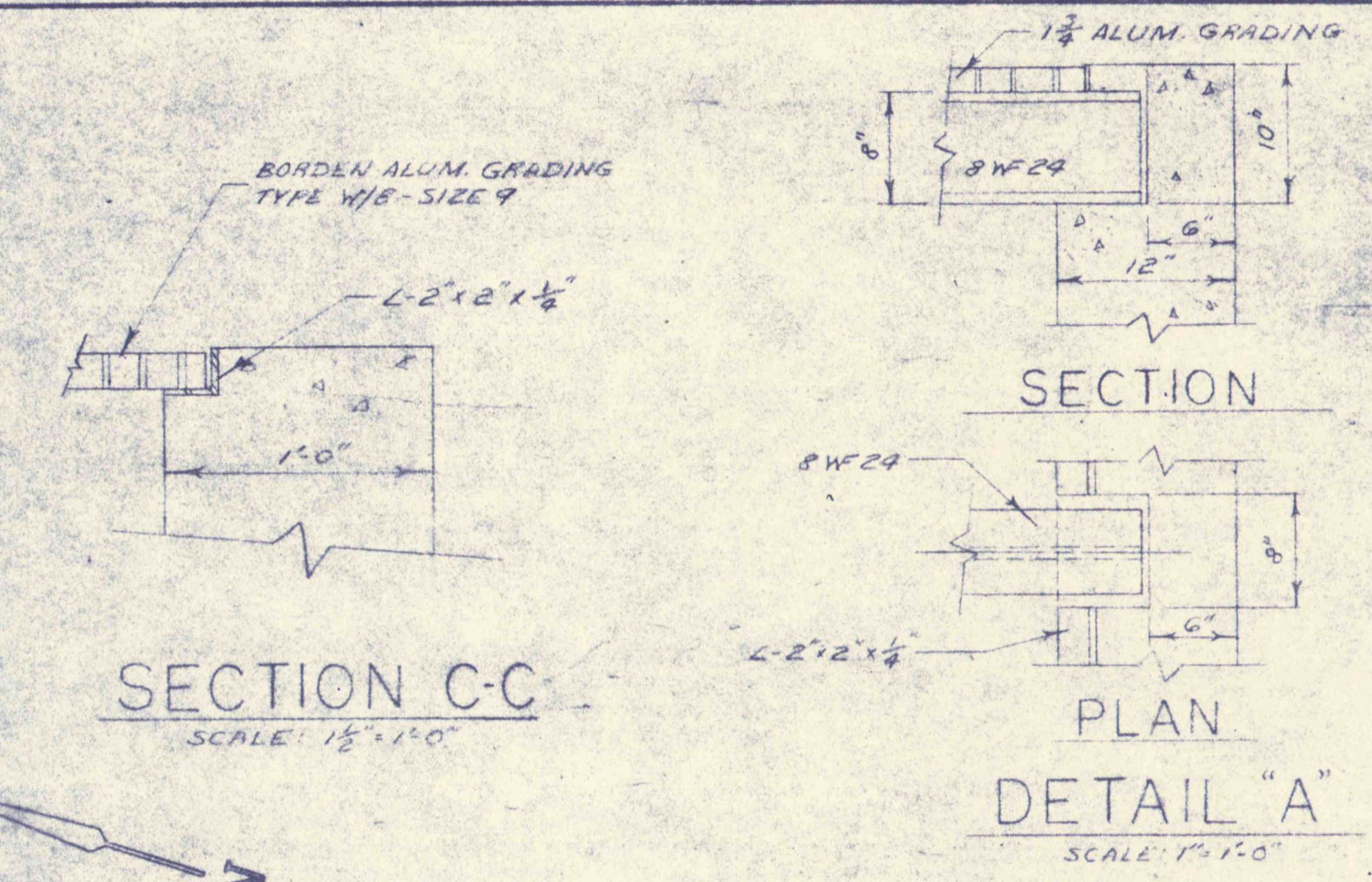


SECTION A-A
INTERCEPTOR BOX NO.5 - DWG. C-1
 SCALE: 3/4"=1'-0"

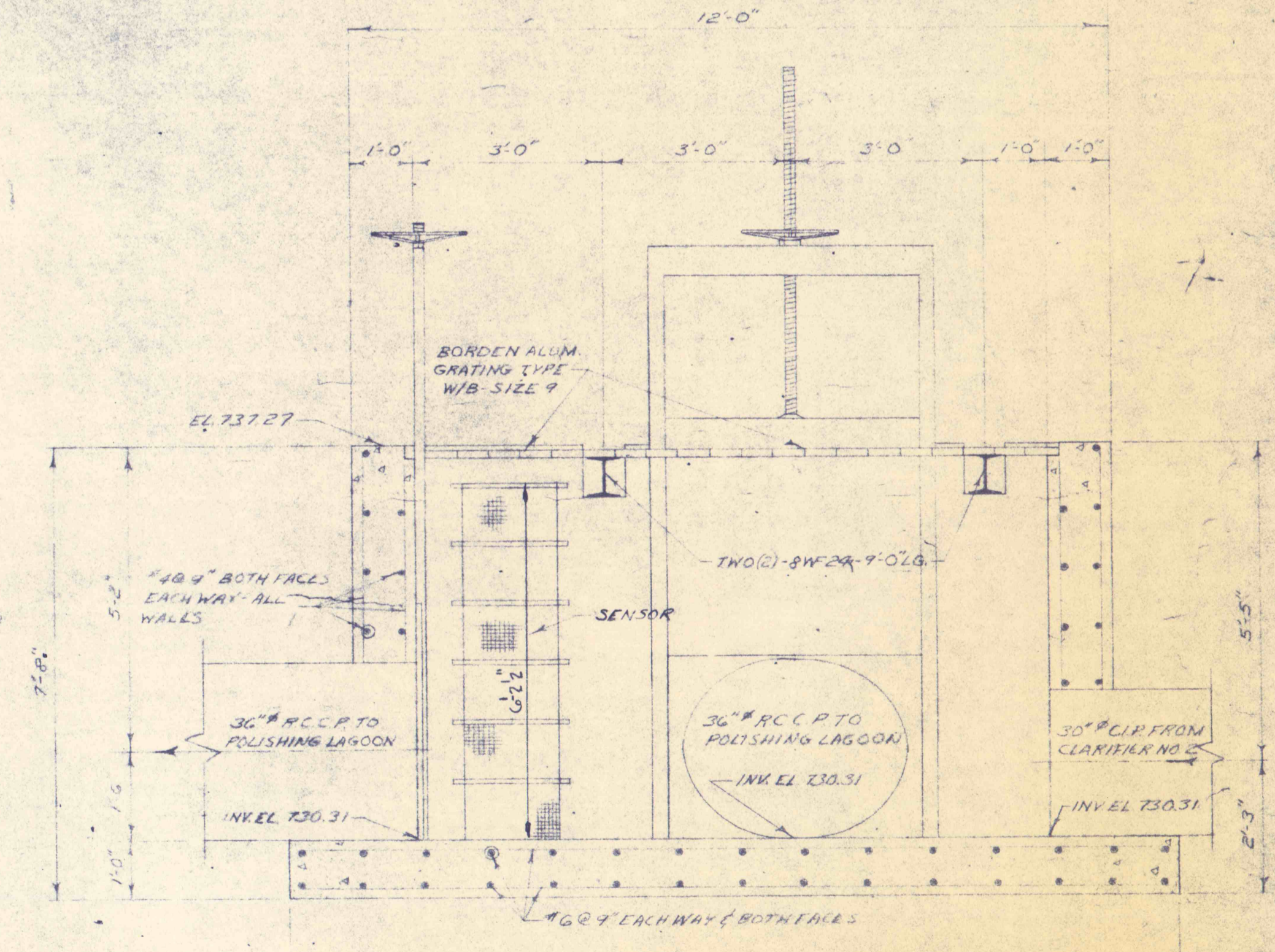
SECTION B-B



SECTION B-B
PLAN
SECTION A-A
INTERCEPTOR BOX NO.3 - DWG. C-1 & C-5
 SCALE: 3/4"=1'-0"



SECTION C-C
PLAN
DETAIL "A"
INTERCEPTOR BOX NO.4
 DWG. C-1 & C-5
 SCALE: 3/4"=1'-0"



2	4-2-71	CHANGED ELEV. OF INTERCEPTOR BOX #9	(F.D.S.)
1	11-9-70	REVISED SPACING OF REIF. FOR INTERCEPTOR BOX #3 & MANHOLE COVER TYPE	

REVISIONS	
CONSTRUCTION DETAILS-INTERCEPTORS	
CONSTRUCTION OF TREATMENT FACILITIES FOR ACID MINE DRAINAGE RAUSCH CREEK WATERSHED SCHUYLKILL COUNTY PENNSYLVANIA	
JOB NO: 6805	DATE: NOV. 1970
SCALE: NOTED	DRAWN: J.S.N.
APPROVED: T.H.R. - J.L.L.	
DRAWING NO: C-23	
RESEARCH & DEVELOPMENT CO. INC. consulting engineers	POTTSVILLE PENNSYLVANIA TAMASUA