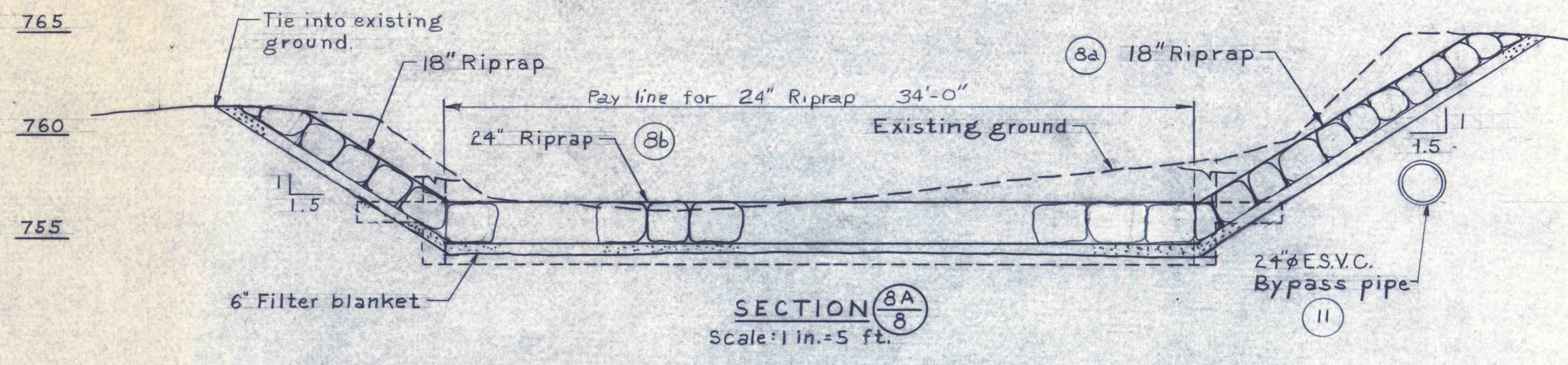
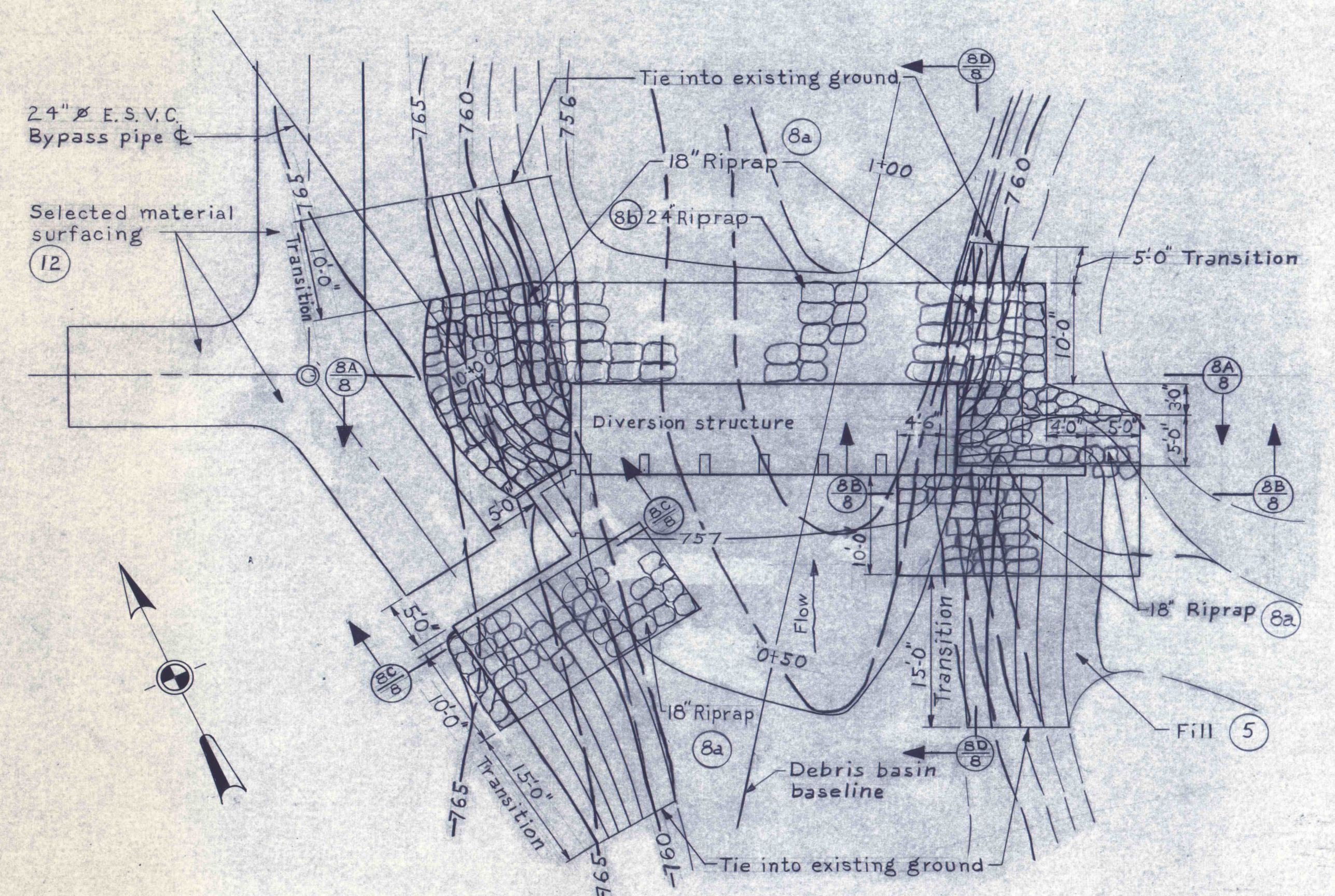


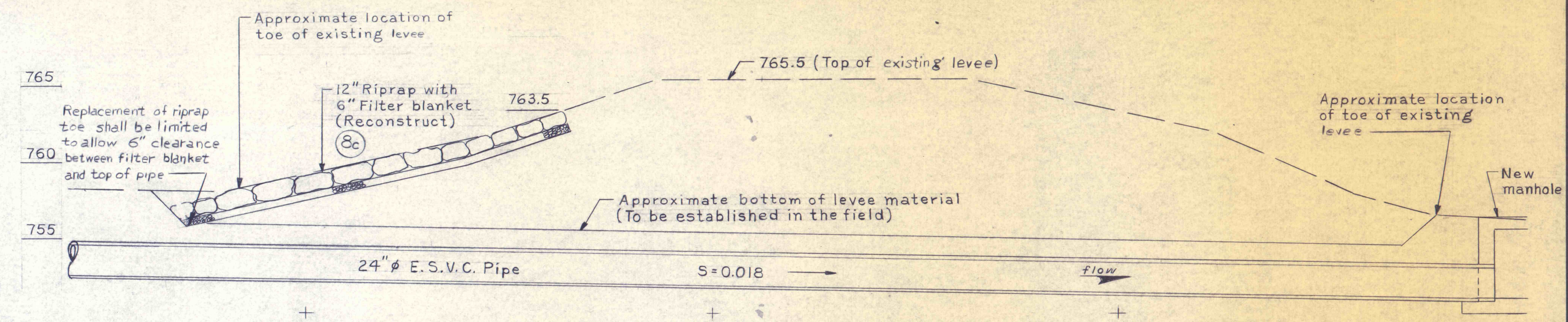
SECTION BC
Scale: 1 in. = 5 ft.



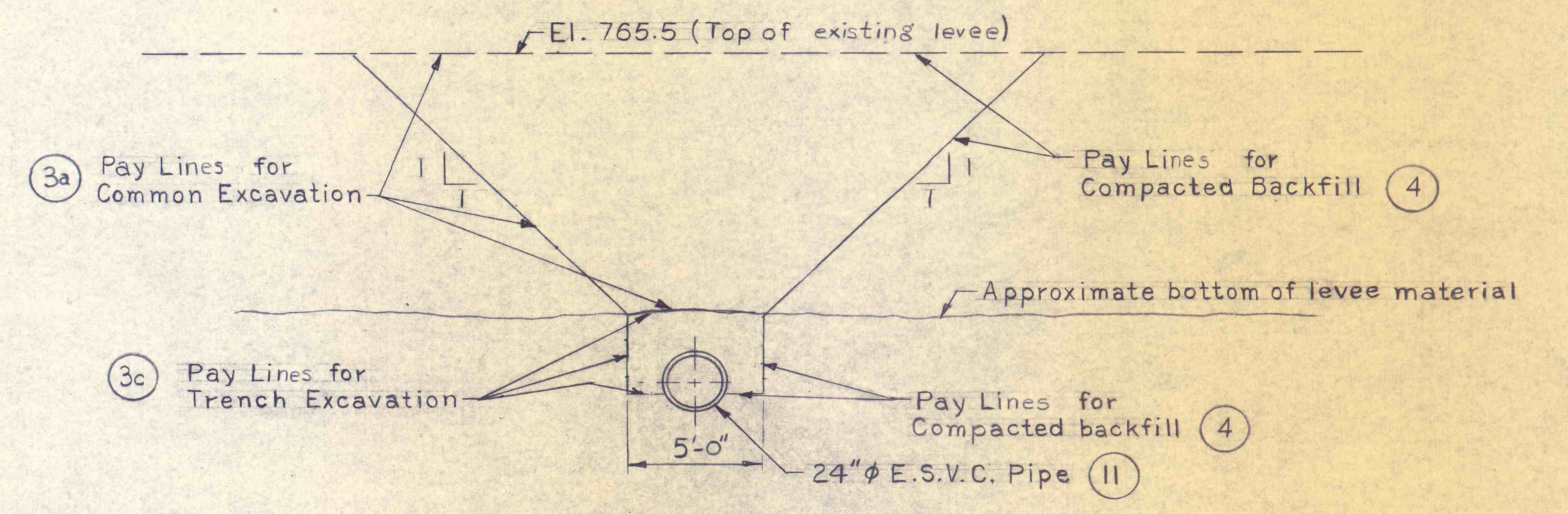
SECTION BA
Scale: 1 in. = 5 ft.



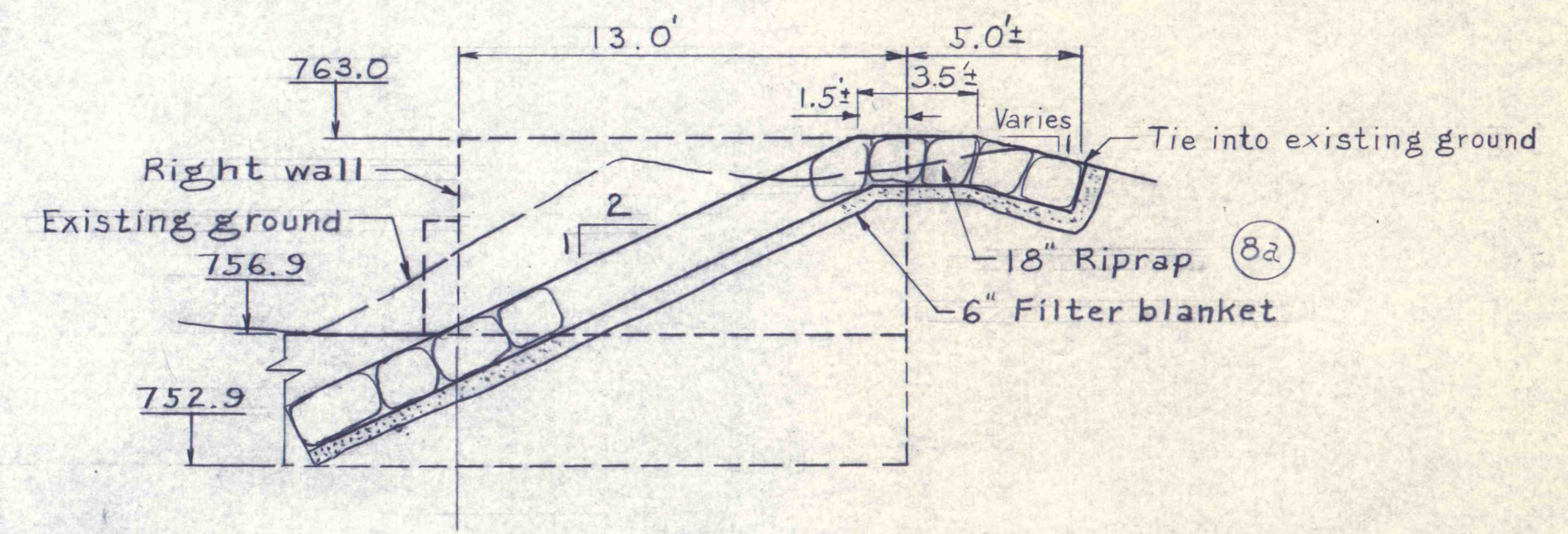
RIPRAP PLACEMENT AROUND DIVERSION STRUCTURE
Scale: 1 in. = 10 ft.



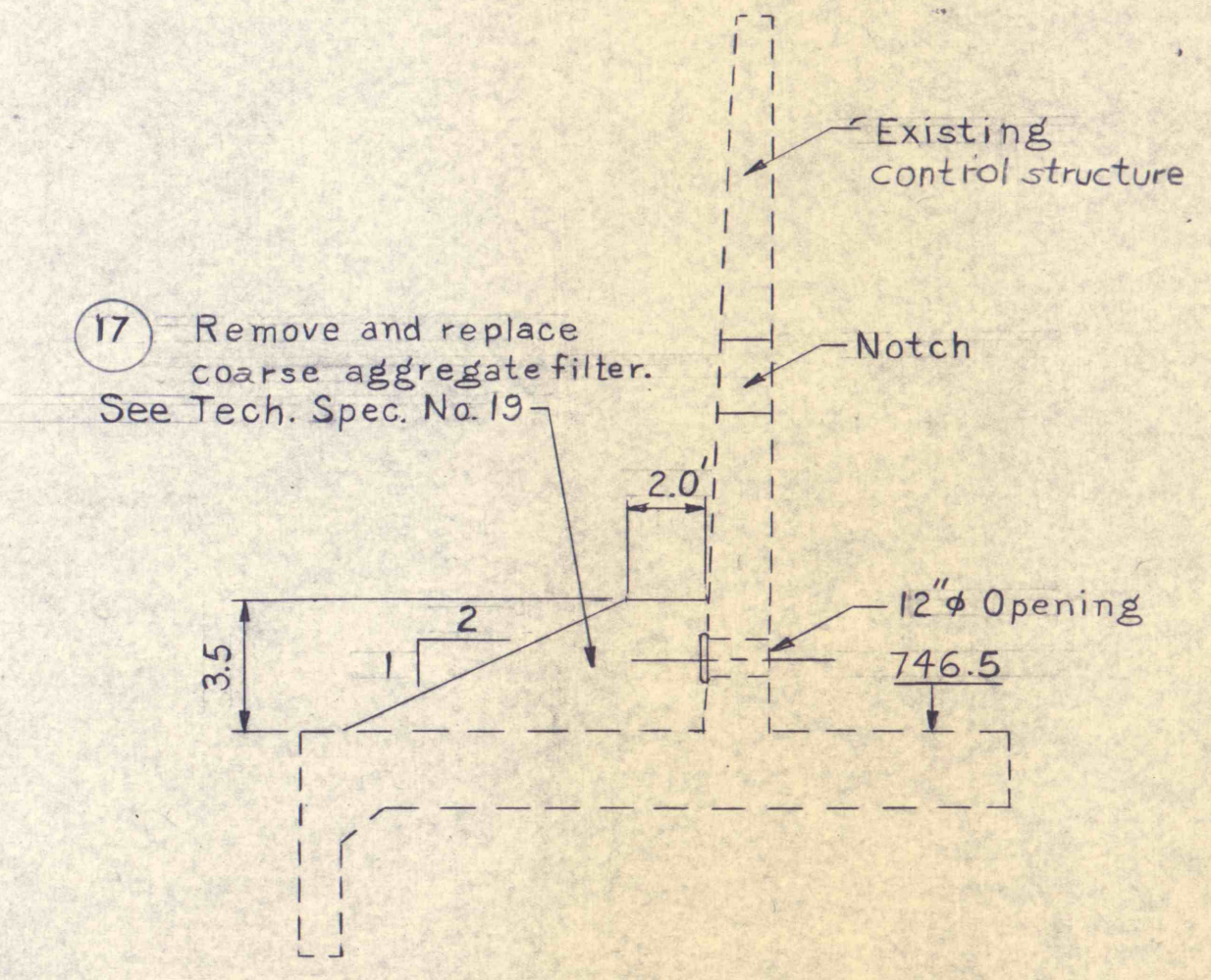
PROFILE OF BY-PASS PIPE THRU LEVEE
Scale: 1 in. = 5 ft.



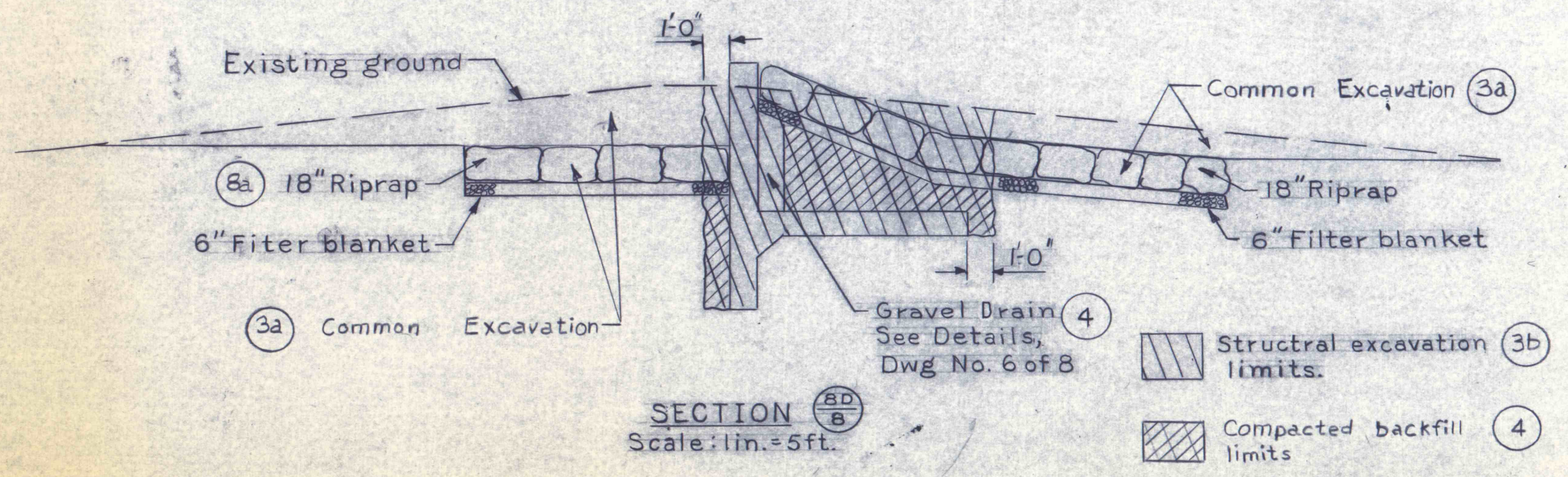
TYPICAL SECTION THRU LEVEE
Scale: 1 in. = 5 ft.



SECTION BB
Scale: 1 in. = 5 ft.



COARSE AGGREGATE FILTER (Typical)
Scale: 1 in. = 5 ft.



SECTION BD
Scale: 1 in. = 5 ft.

NO.	DATE	REVISION	APPR.
SUBMITTED <i>Robert E. Watta Jr.</i> PROJECT CO-ORDINATOR			
APPROVED <i>Robert C. Roman</i> CHIEF-DIVISION OF ACID MINE DRAINAGE ABATEMENT			
APPROVED <i>Dr. P. J. ...</i> DIRECTOR - BUREAU OF WATER PROJECTS			
COMMONWEALTH OF PENNSYLVANIA DEPARTMENT OF ENVIRONMENTAL RESOURCES OFFICE OF RESOURCES MANAGEMENT			
CONTRACT NO. SL 112-16-101.1			
MINE DRAINAGE POLLUTION ABATEMENT DEBRIS BASIN ENLARGEMENT AND DIVERSION FACILITIES RAUSCH CREEK TREATMENT PLANT SCHUYLKILL CO. PENNSYLVANIA			
DETAILS			
DRAWN BY <i>RCB</i>	DATE	SCALE As shown	DRAWING NO. 8 of 8

"ALL DIMENSIONS AND EXISTING CONDITIONS SHALL BE CHECKED AND VERIFIED BY CONTRACTOR AT THE SITE."