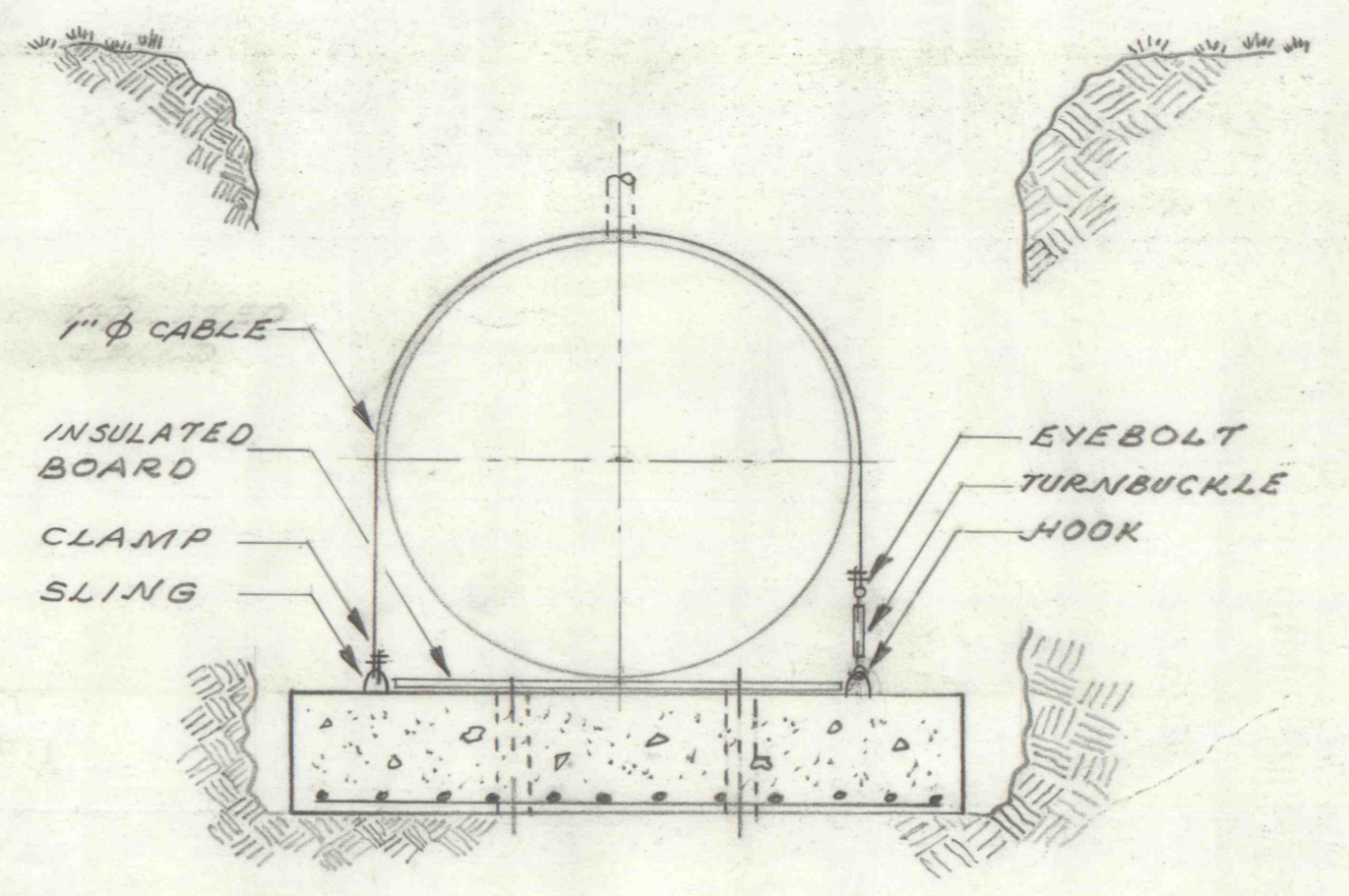
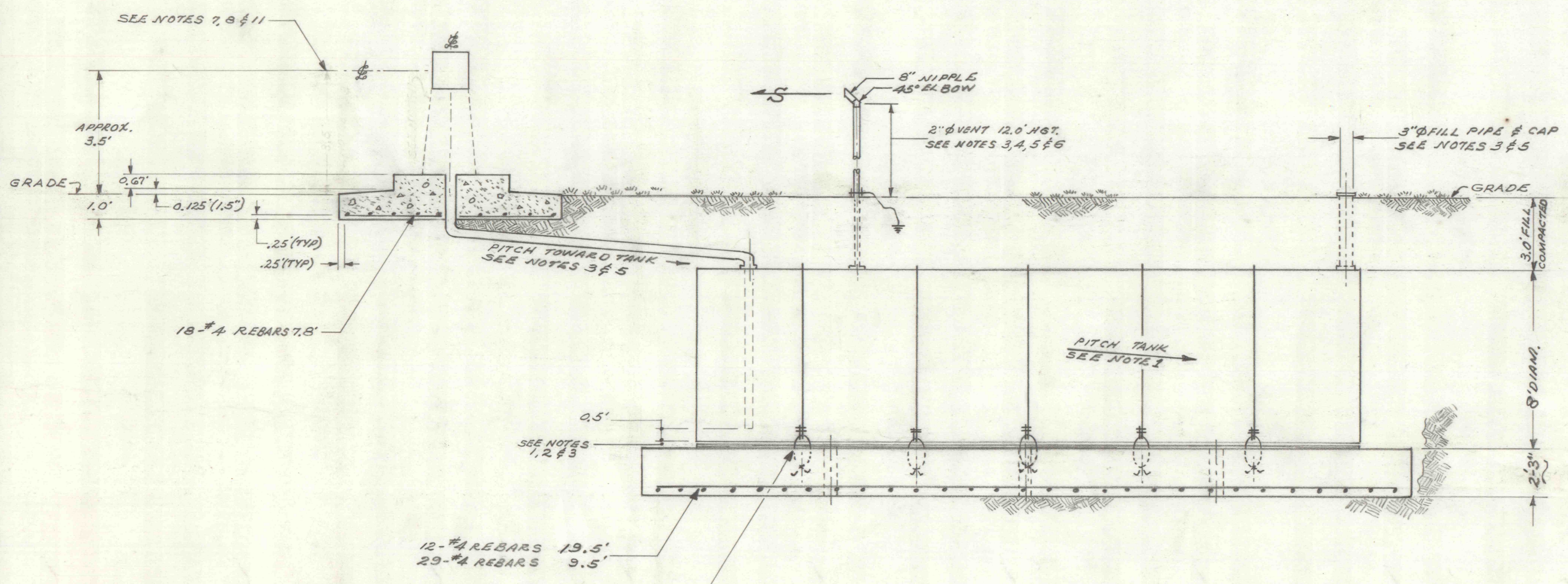
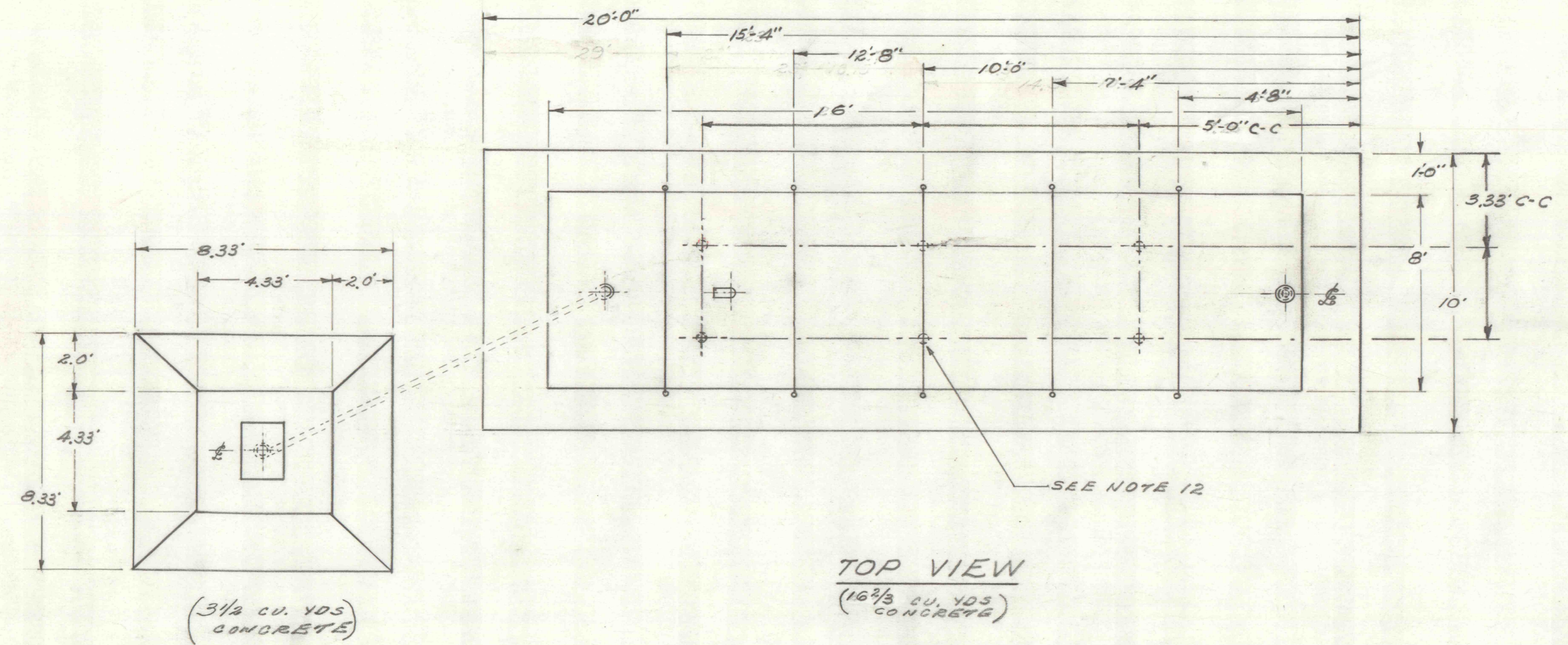


NOTES:

1. PITCH BOTTOM OF TANK 1/2" FROM HIGH SIDE (SUCTION) TO LOW SIDE (FILL).
2. SEPARATE TANK AND CONCRETE SLAB WITH 3/8" TO 3/4" THICK INSULATED WATERPROOFING BOARD.
3. PAINT ALL UNDERGROUND ITEMS WITH A BLACK WATERPROOF COATING.
4. ATTACH VERTICAL SUPPORT AS NECESSARY.
5. ALL THREADED JOINTS & CONNECTIONS TO BE SEALED WITH APPROVED TAPE OR PIPE COMPOUND.
6. ATTACH ELECTRICAL GROUND FROM VENT TO APPROVED GROUND PLATE OR ROD.
7. INSTALL 1-1000 DRY CHEM APPROVED FIRE EXTINGUISHER AND "NO SMOKING" SIGN.
8. INSTALL ISLAND MOUNTED "GASBOY PUMP-SERIES 1800" PER MANUFACTURERS INSTRUCTIONS.
9. REMOVE 20 LINEAL FEET OF BLACKTOP ROADWAY AND REPLACE WITH REINFORCED CONCRETE.
10. SEED AND RESTORE ALL DISTURBED VEGETATION ADJACENT TO WORK AREA.
11. DER TO FURNISH CRADLE.
12. DER TO INSTALL SIX(6) PORTS AS SHOWN. PORTS TO BE 4" DIA. PLASTIC DRAIN PIPE. CAP PORTS WHILE POURING CONCRETE. REMOVE CAPS WHEN CONCRETE IS CURED.



ALL BELOW ITEMS FOR 1" Ø WIRE CABLE
 5- CABLES 22.0' LENGTH
 10- CABLE SLINGS 3.0' LENGTH
 10- CLAMPS
 5- TURNBUCKLES W/HOOK & EYEBOLT

COMMONWEALTH OF PENNSYLVANIA DEPARTMENT OF ENVIRONMENTAL RESOURCES OFFICE OF RESOURCES MANAGEMENT		
GAS PUMP INSTALLATION RAUSCH CREEK ACID MINE DRAINAGE TREATMENT PLANT SCHUYLKILL CO. PENNSYLVANIA		
DETAILS		
DRAWN BY M.M.Z.	DATE 7.9.51 8.20.80	DRAWING NO. 2 of 2
CHECKED BY	SCALE 1" = 3.0'	