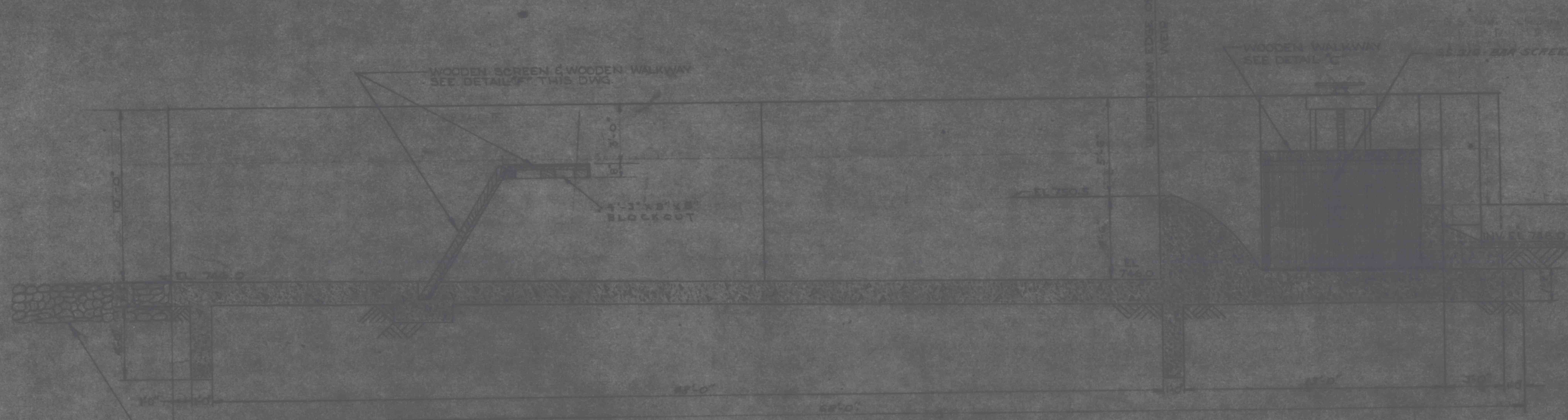
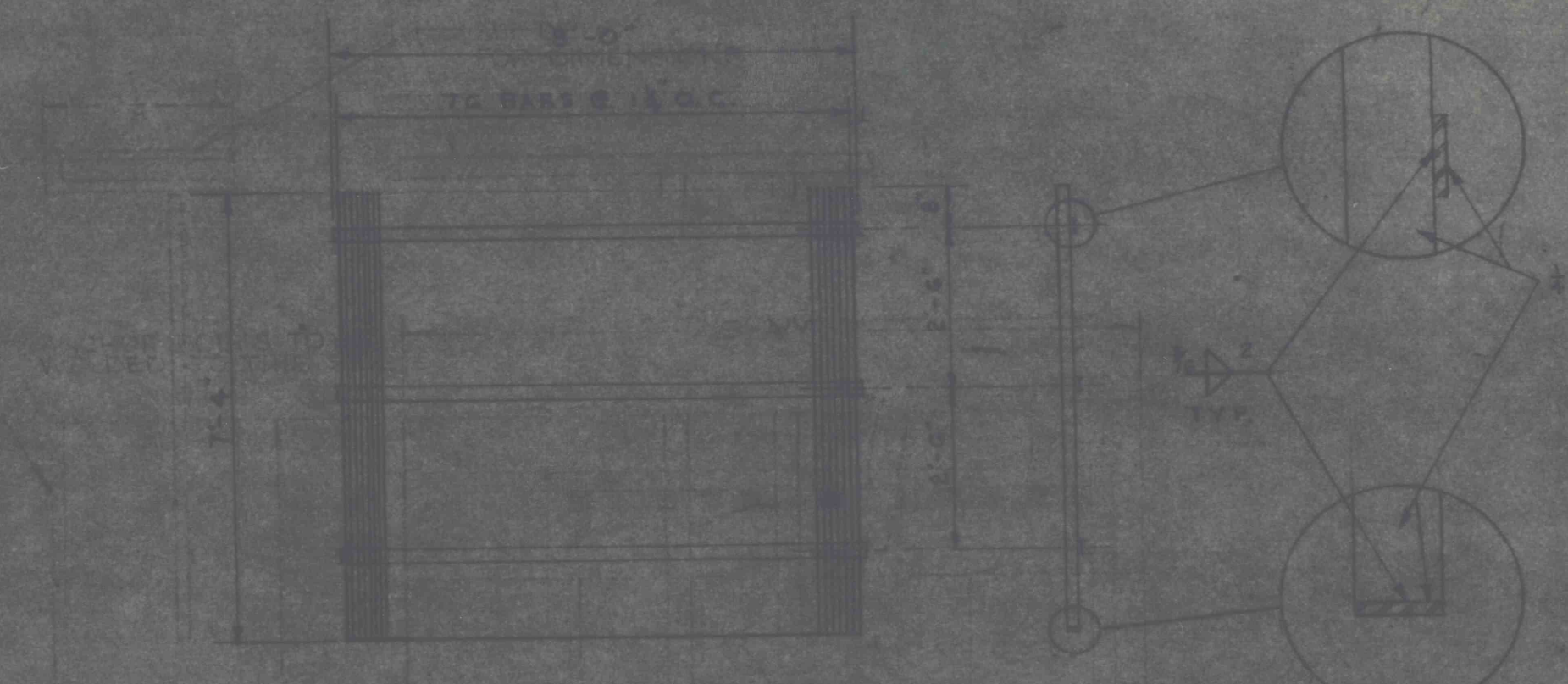


GENERAL NOTES

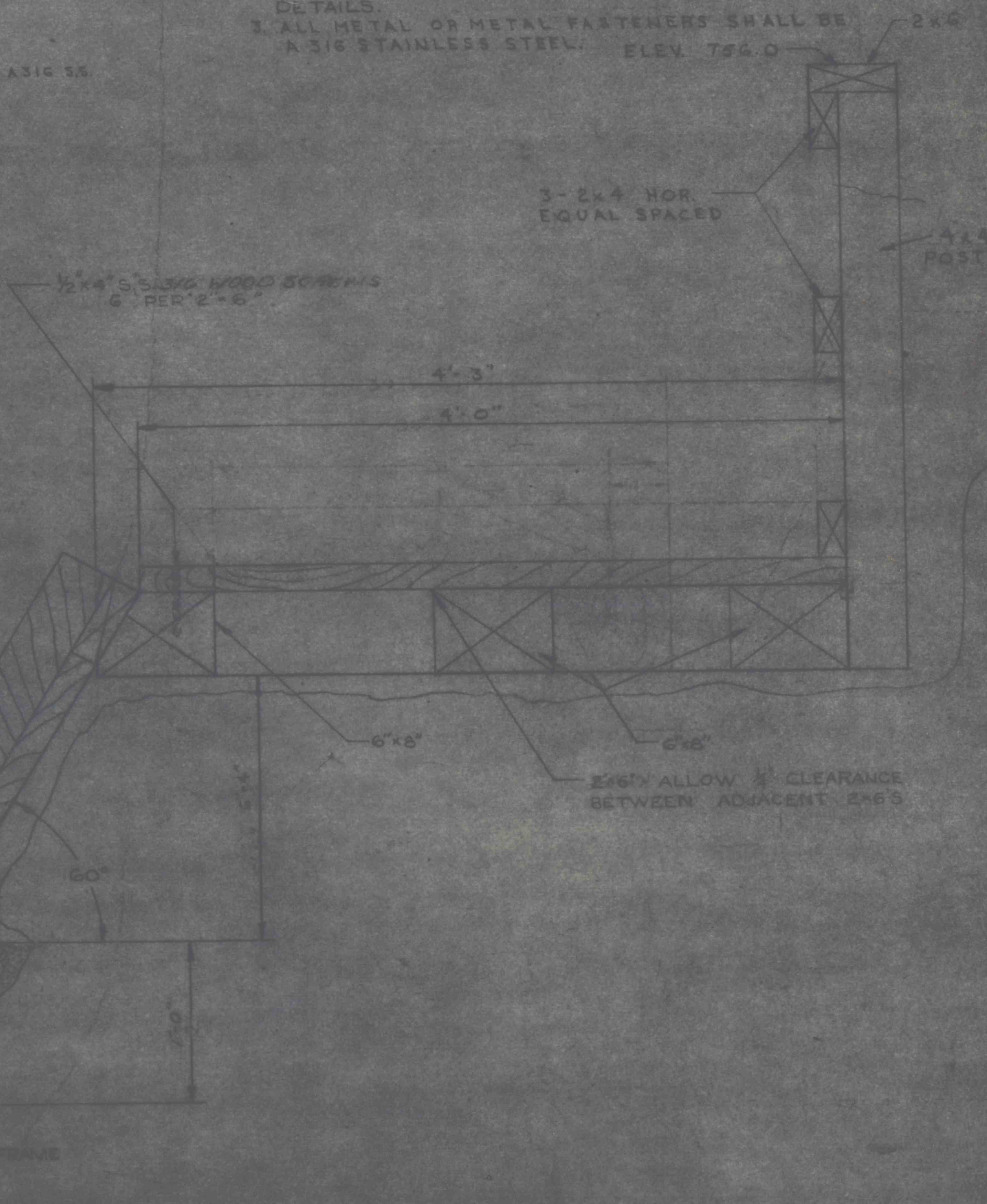
1. ALL LUMBER USED ON THIS DWG. UNLESS OTHERWISE SPECIFIED IS TO BE SOUTHERN PINE, S4S, TREATED IN CREOSOTE.
2. REFER TO DWG. NO. C-1/D FOR STRUCTURAL DETAILS.
3. ALL METAL OR METAL FASTENERS SHALL BE A 316 STAINLESS STEEL. ELEV. 755.0



SECTION A-A
SCALE 1/4" = 1'-0"



DETAIL G

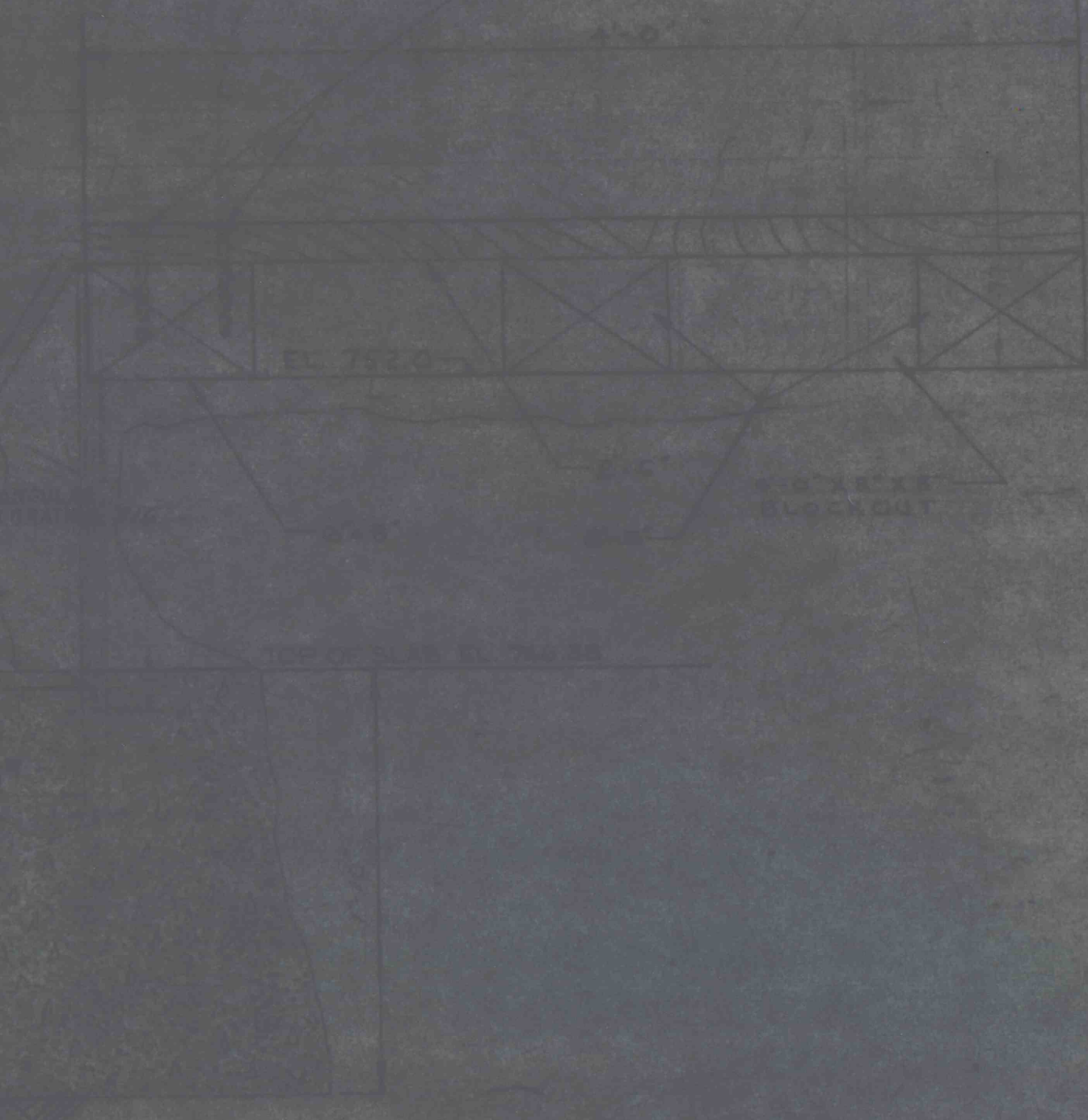


DETAIL F



PLAN
DWG. C-1/C2
SCALE 1/4" = 1'-0"

DETAIL D



DETAIL C



SECTION B-B
SCALE 1/4" = 1'-0"



NO.	REVISION	DATE
1	ISSUED FOR PERMIT	12/31/2024
2	REVISED PER COMMENTS	12/31/2024
3	REVISED PER COMMENTS	12/31/2024
4	REVISED PER COMMENTS	12/31/2024
5	REVISED PER COMMENTS	12/31/2024