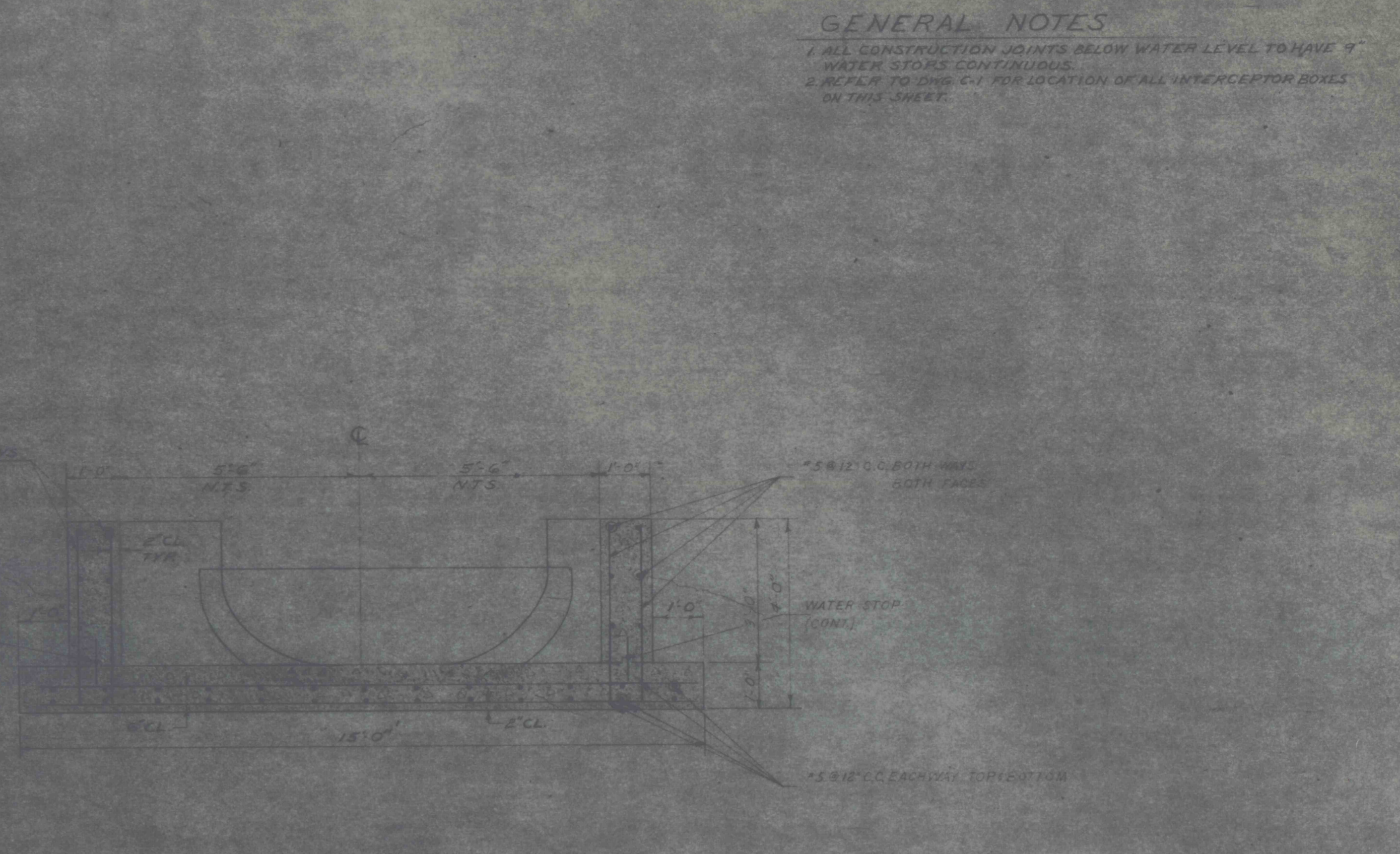
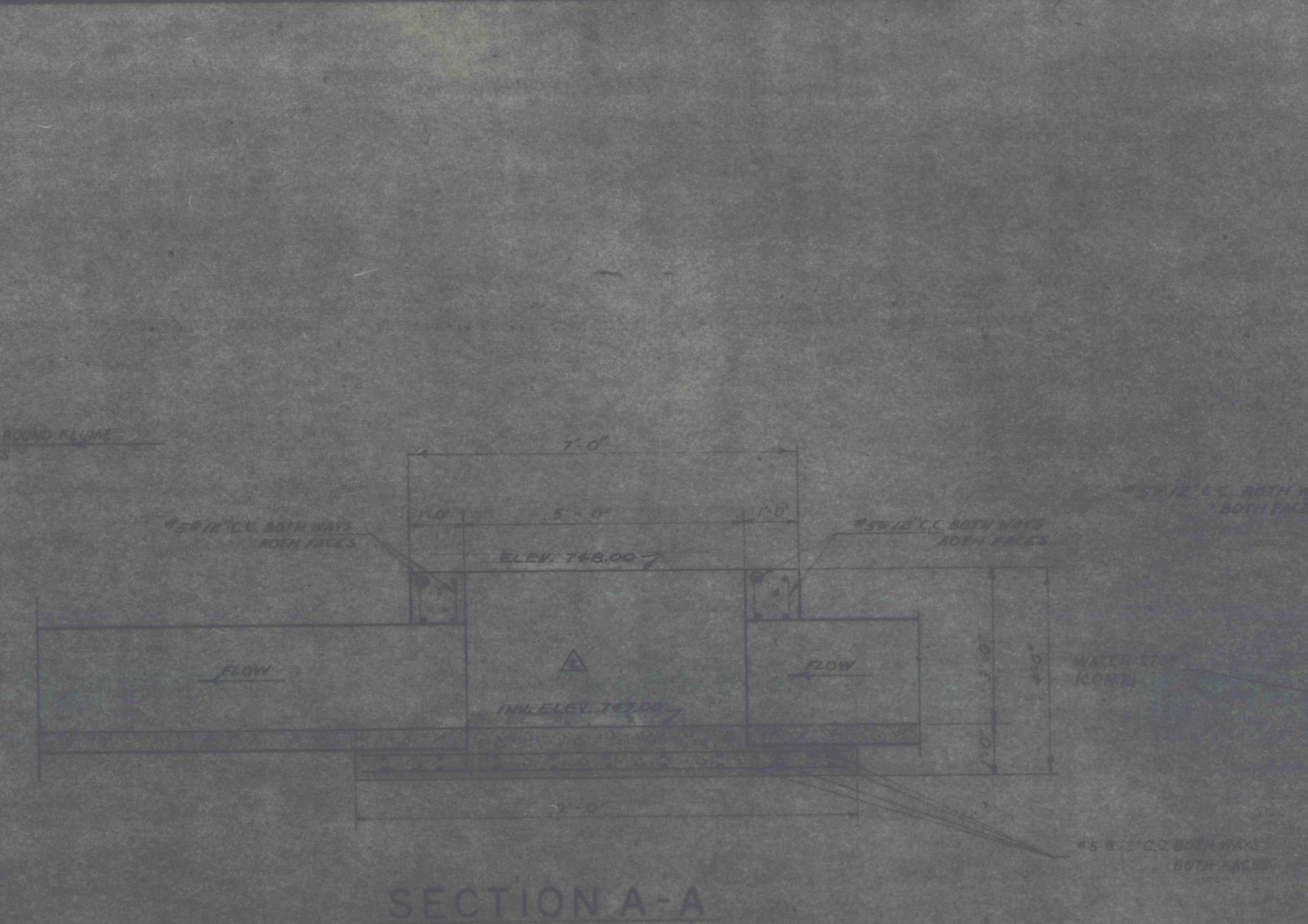
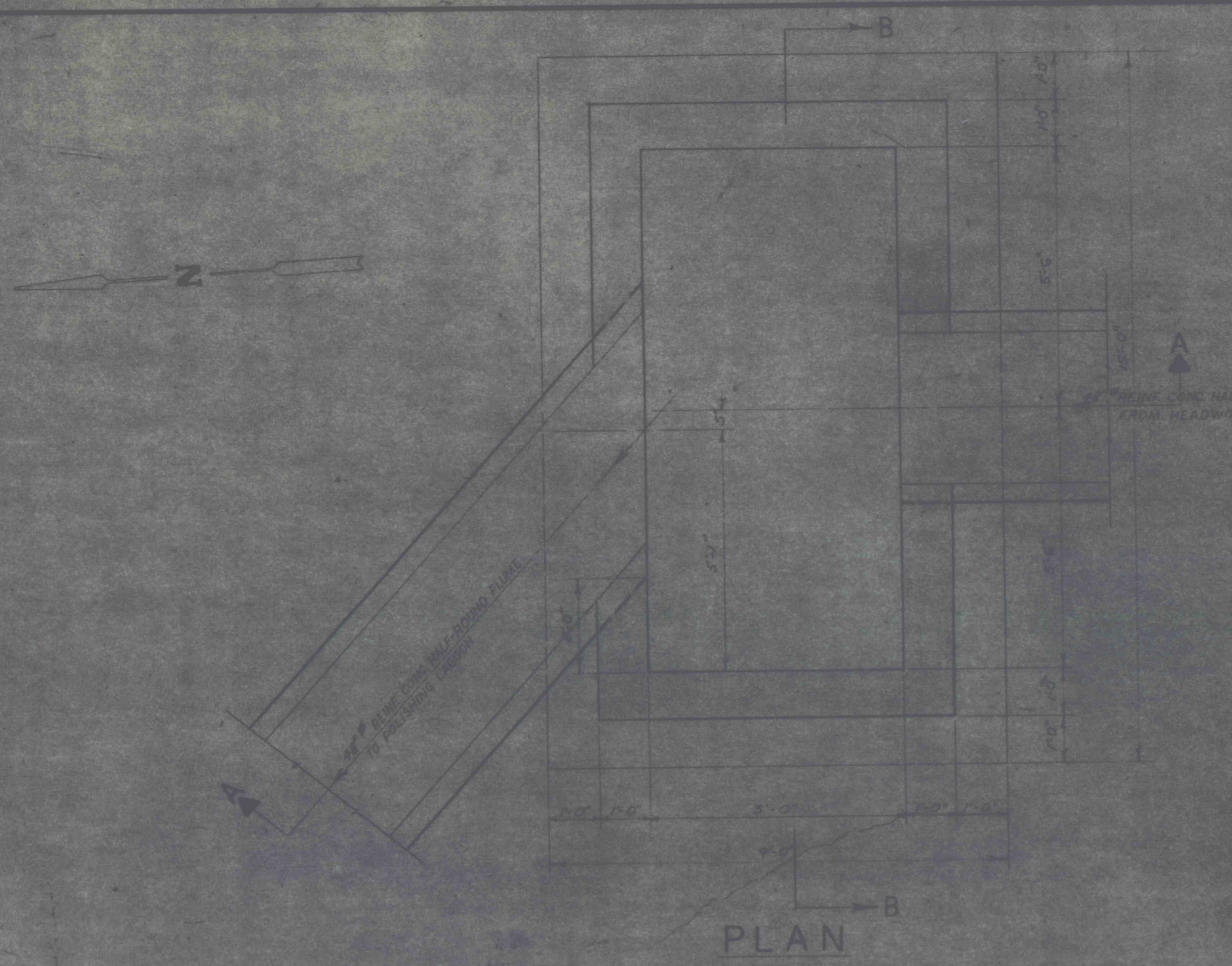
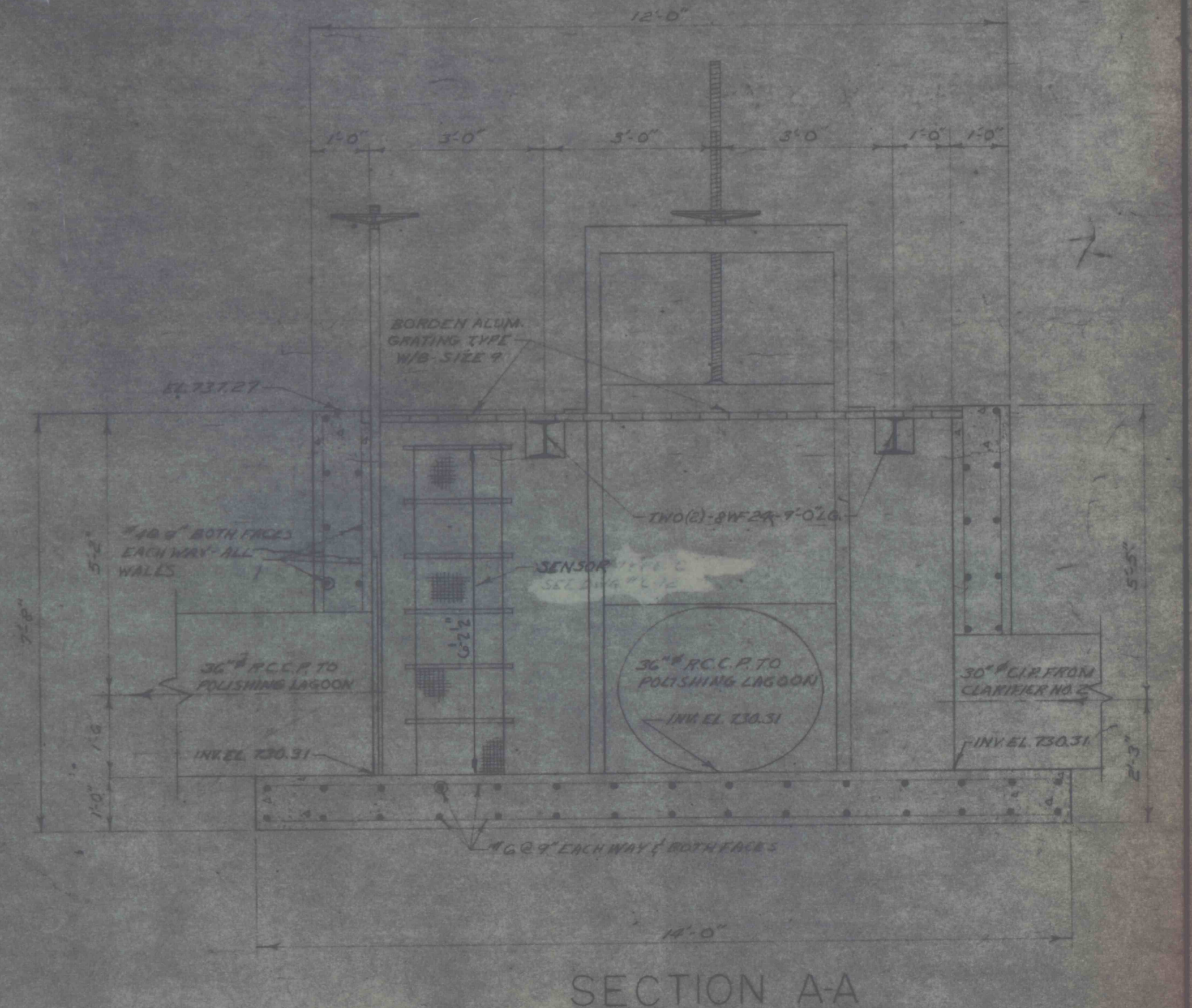
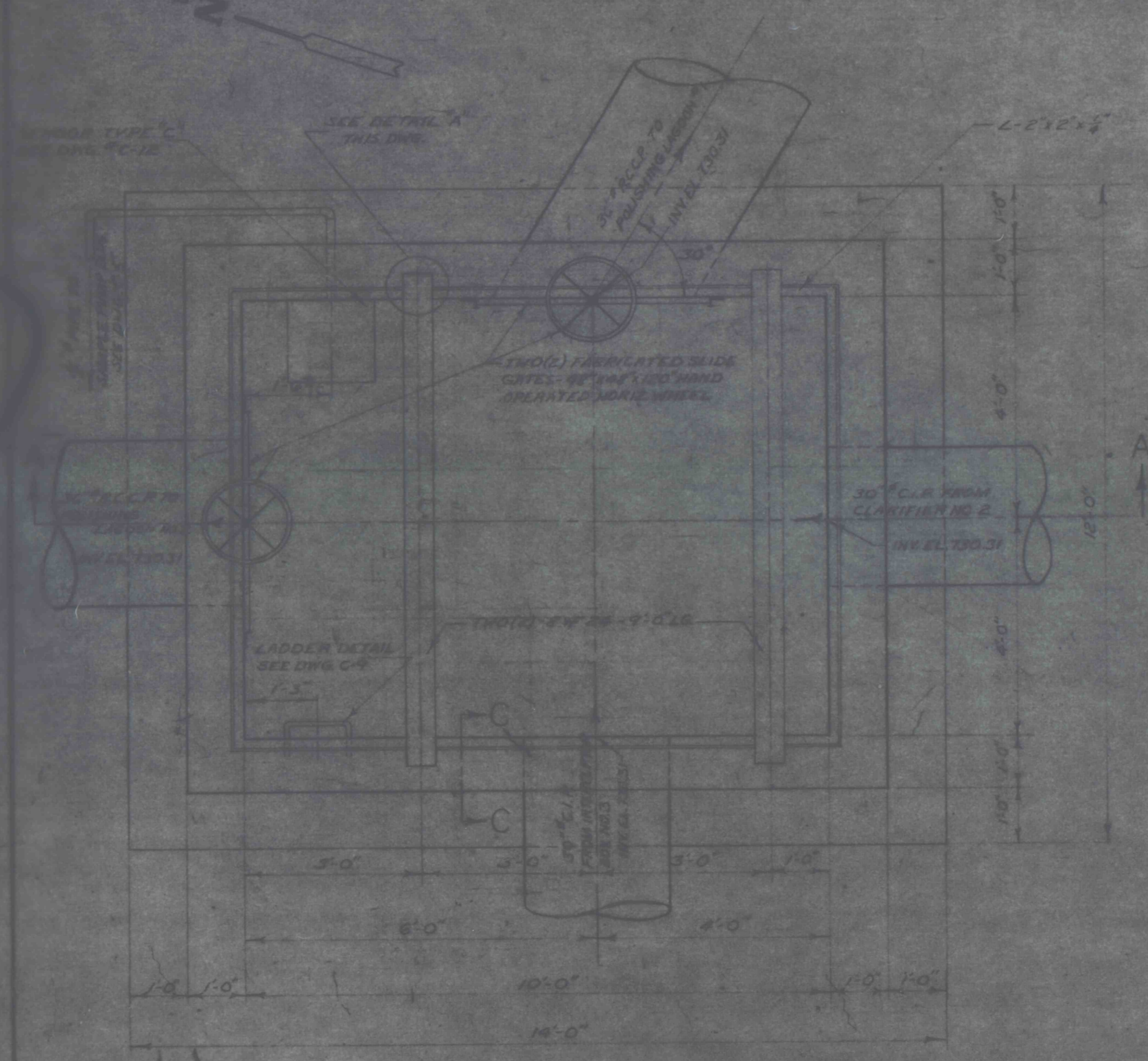
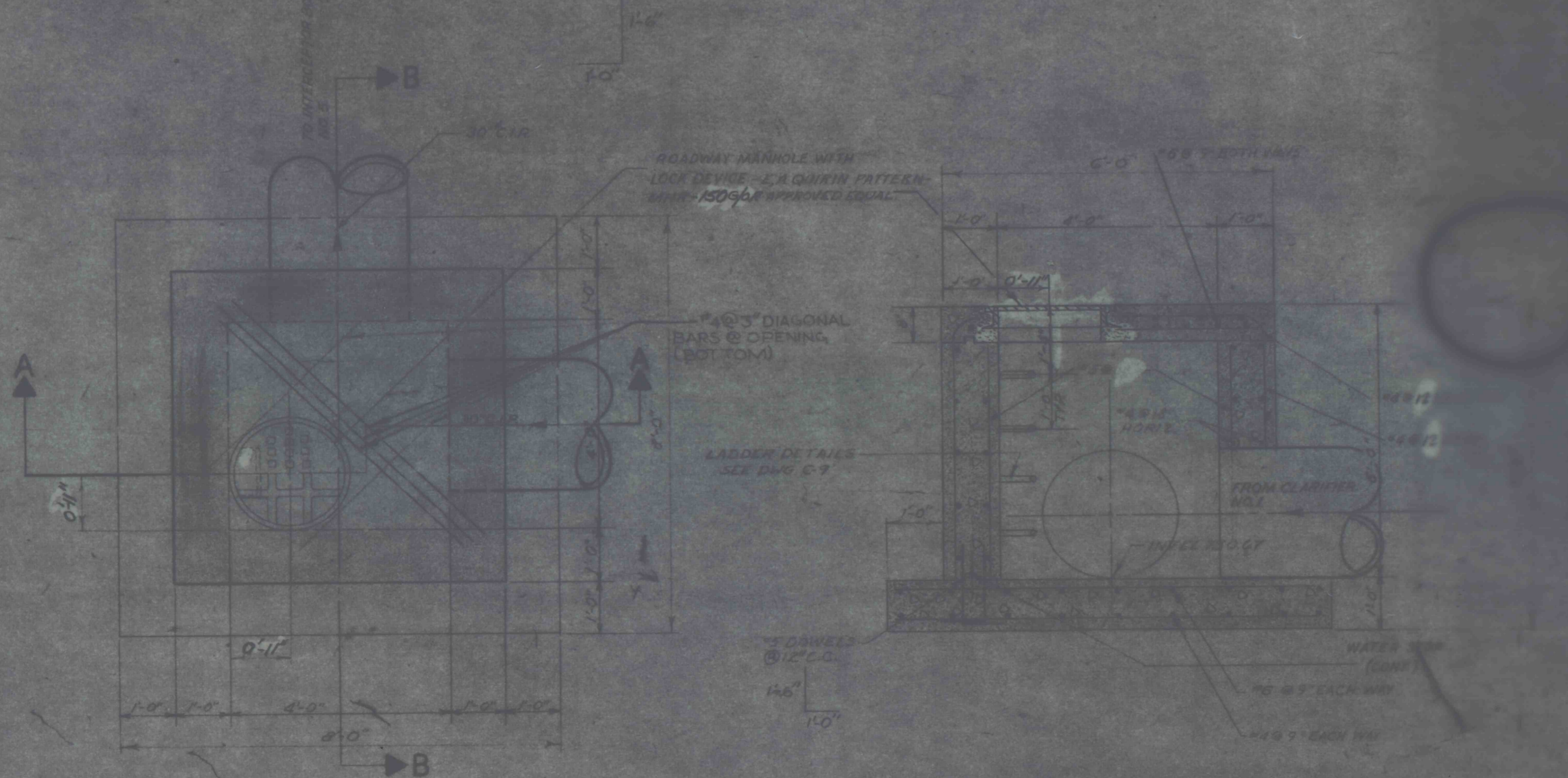
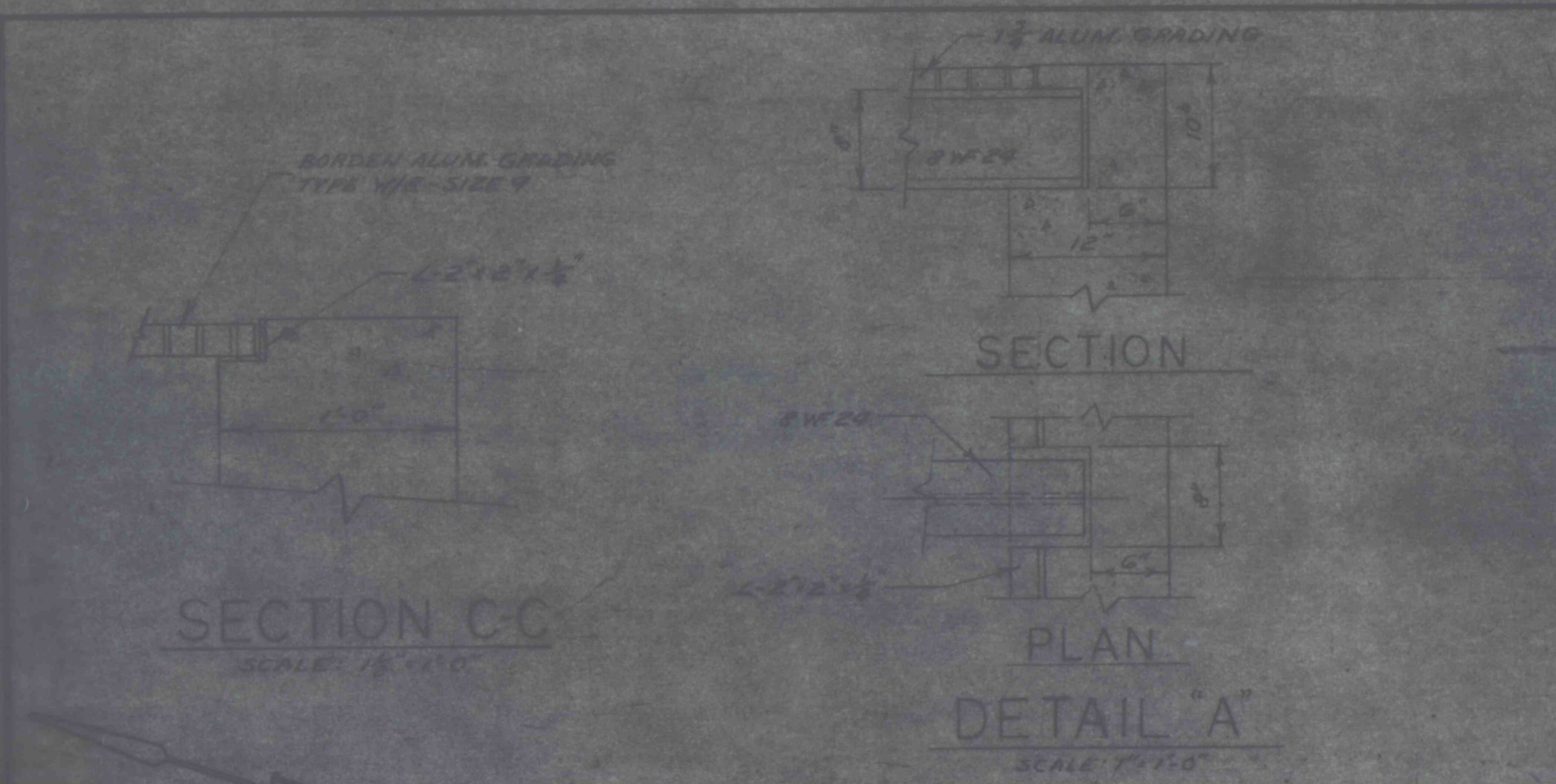


GENERAL NOTES
 1. ALL CONSTRUCTION JOINTS BELOW WATER LEVEL TO HAVE 9" WATER STOPS CONTINUOUS.
 2. REFER TO DWG. C-1 FOR LOCATION OF ALL INTERCEPTOR BOXES ON THIS SHEET.



INTERCEPTOR BOX NO.5 - DWG. C-1
 SCALE: 3/4"=1'-0"



INTERCEPTOR BOX NO.3 - DWG. C-1 & C-5
 SCALE: 3/4"=1'-0"

INTERCEPTOR BOX NO.4
 DWG. C-1 & C-5
 SCALE: 3/4"=1'-0"

REVISIONS	
2	1-2-77 CHANGED ELEV. OF INTERCEPTOR BOX #4
1	11-3-76 REVISED SPACING OF REIF. FOR INTERCEPTOR BOX #4 W/WHOLE COVER (CPA)

CONSTRUCTION DETAILS-INTERCEPTORS

CONSTRUCTION OF TREATMENT FACILITIES FOR ACID MINE DRAINAGE	JOB NO. 6809
RAUSCH CREEK WATERSHED	SCALE: NOTED
SCHUYLKILL COUNTY PENNSYLVANIA	DRAWN: J.E.N.
ANTHRACITE RESEARCH & DEVELOPMENT CO. INC. consulting engineers	APPROVED: T.M.B.
POTTSVILLE PENNSYLVANIA	DRAWING NO. C-23