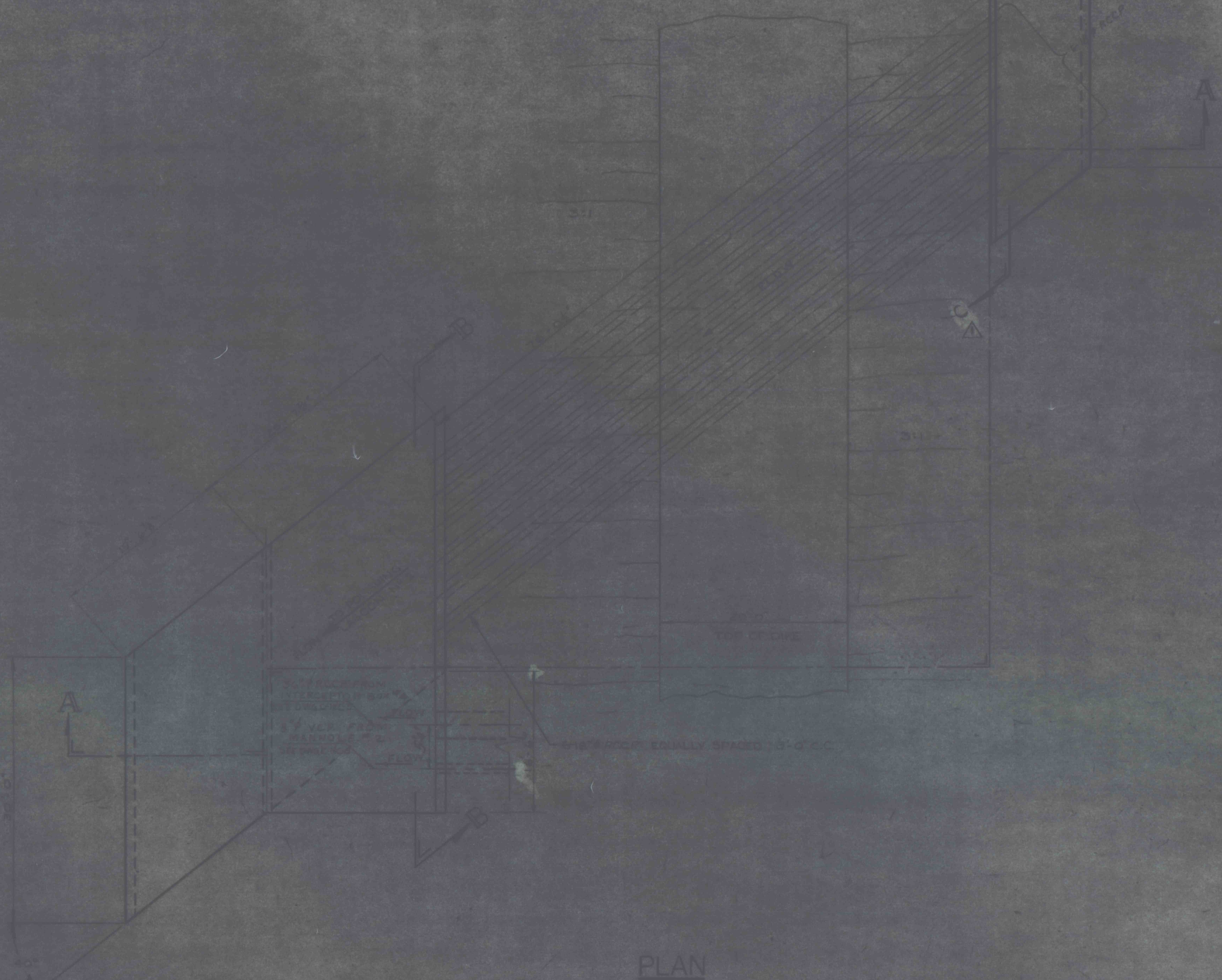


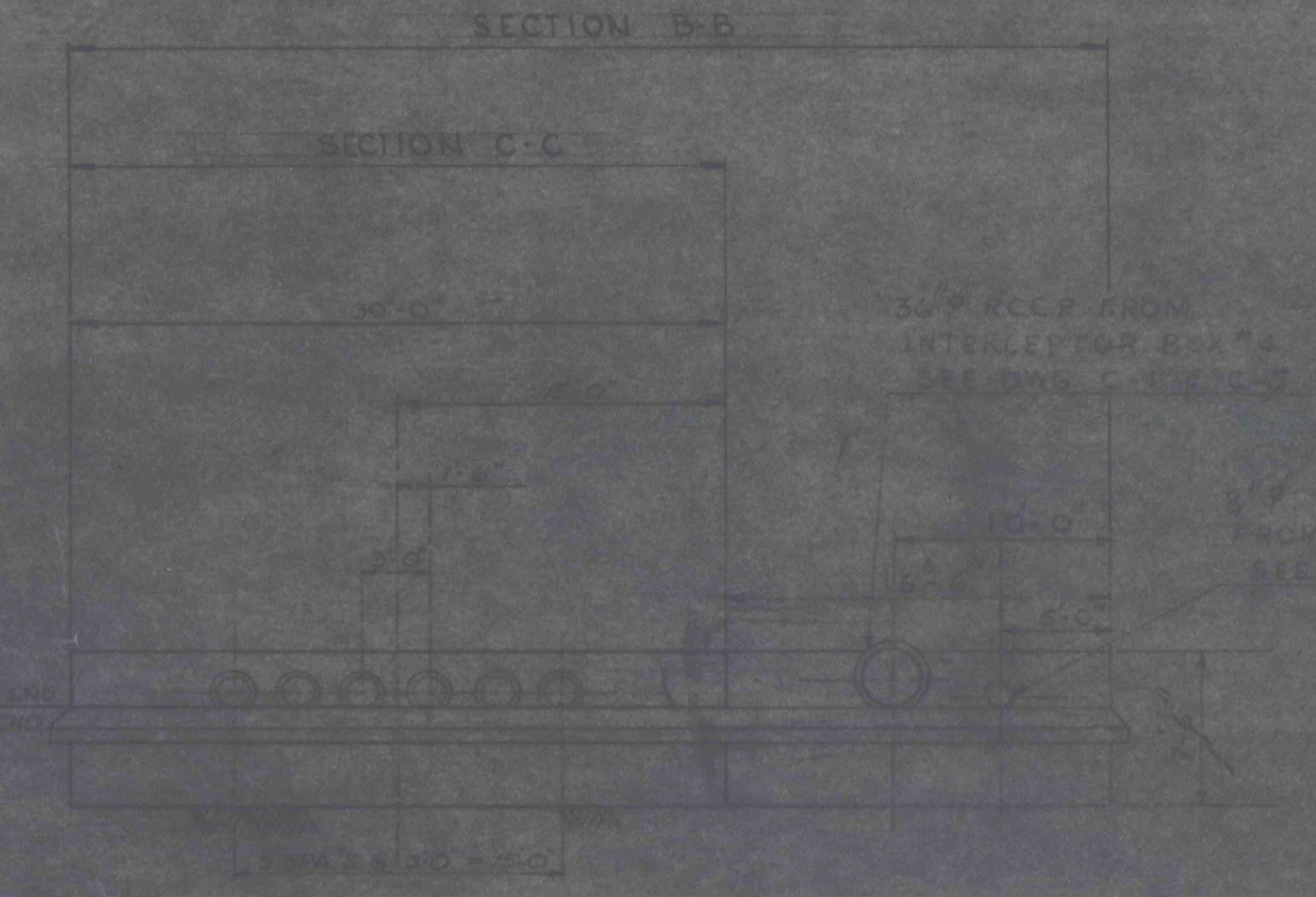
SECTION A-A

GENERAL NOTES

REFER TO DWG. NO. C-1 FOR LOCATION OF OVERFLOW STRUCTURE.



PLAN



SECTION B-B  
SECTION C-C

OVERFLOW STRUCTURE N°1  
DWG. C-1



REVISED SECTION B-B AS SHOWN	
REVISIONS	
CONSTR. DETAILS OVERFLOW STR. #1	
CONSTRUCTION OF TREATMENT FACILITIES OF ACID MINE DRAINAGE RAUSCH CREEK WATERSHED SCHUYLKILL COUNTY, PENNSYLVANIA	
ANTRACITE RESEARCH & DEVELOPMENT CO. INC. consulting engineers	FOOTVILLE, PENNSYLVANIA
THOMAS H. HILL	ROBERT J. SMITH
NO. 12345	NO. 67890
EXPIRES 12/31/2025	EXPIRES 12/31/2025
DRAWING NO.	C-26