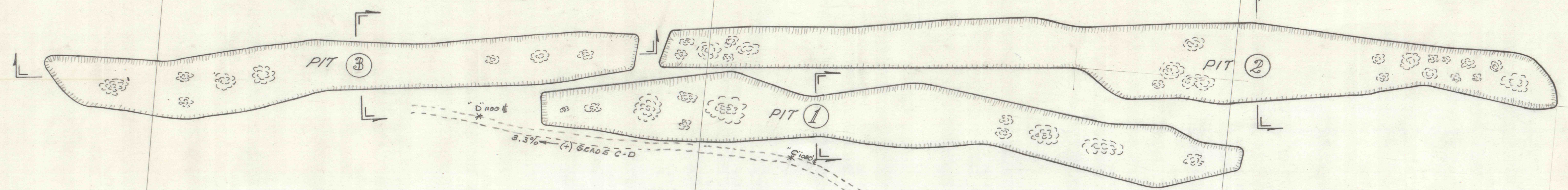
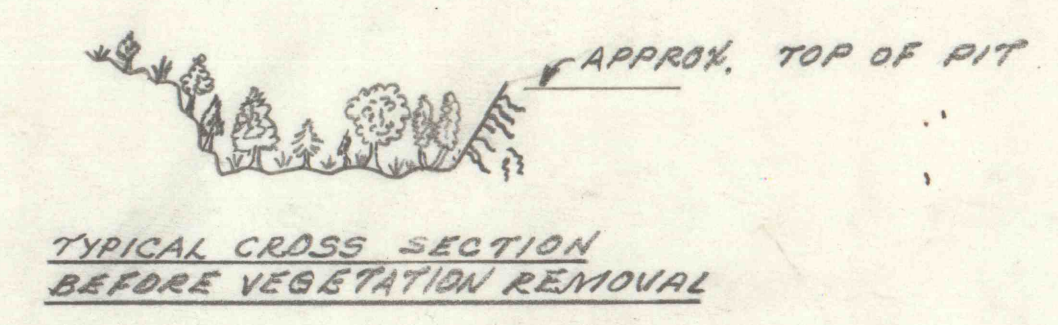
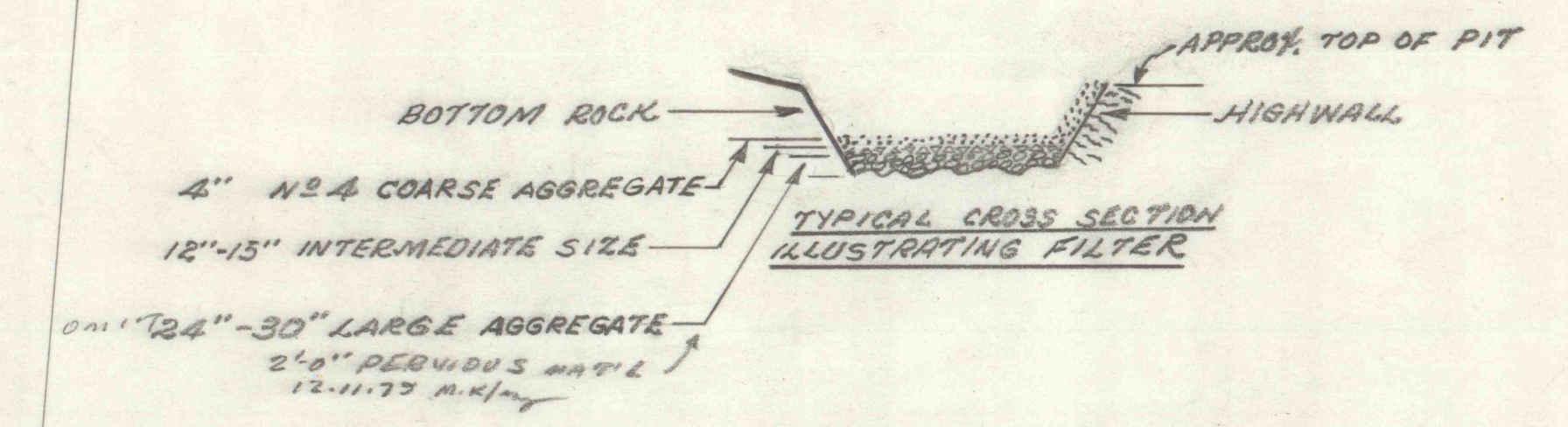


48 000 W

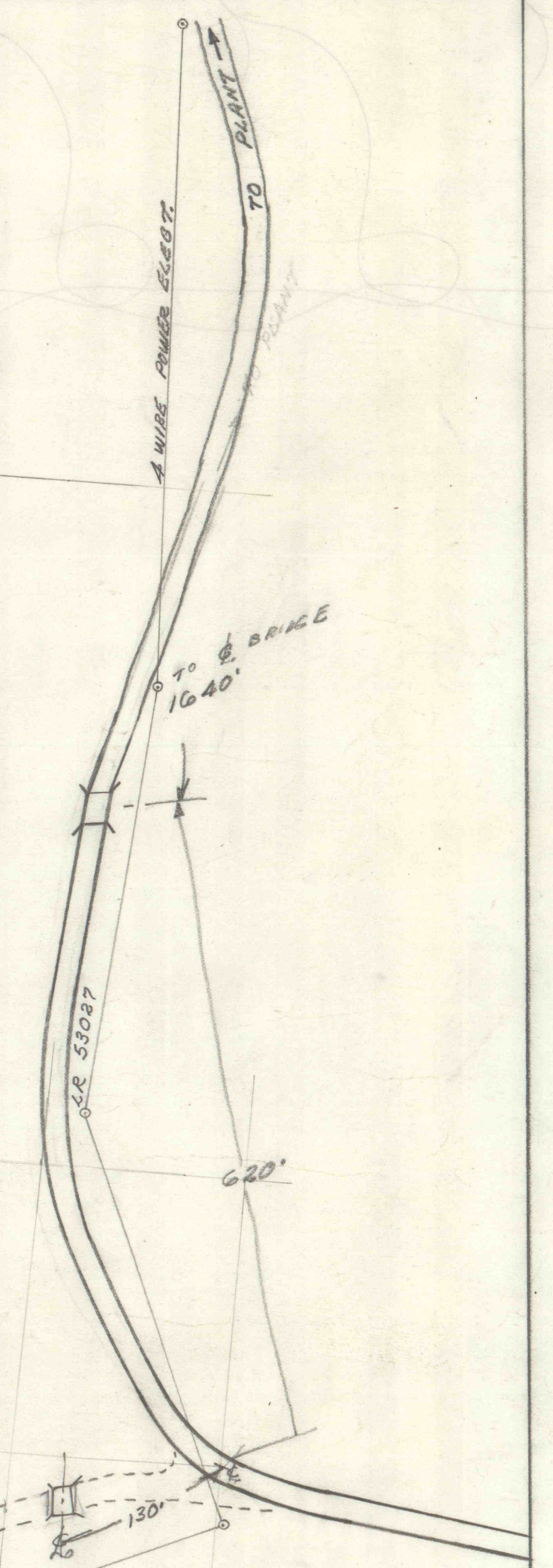
47000 W

46 000 W

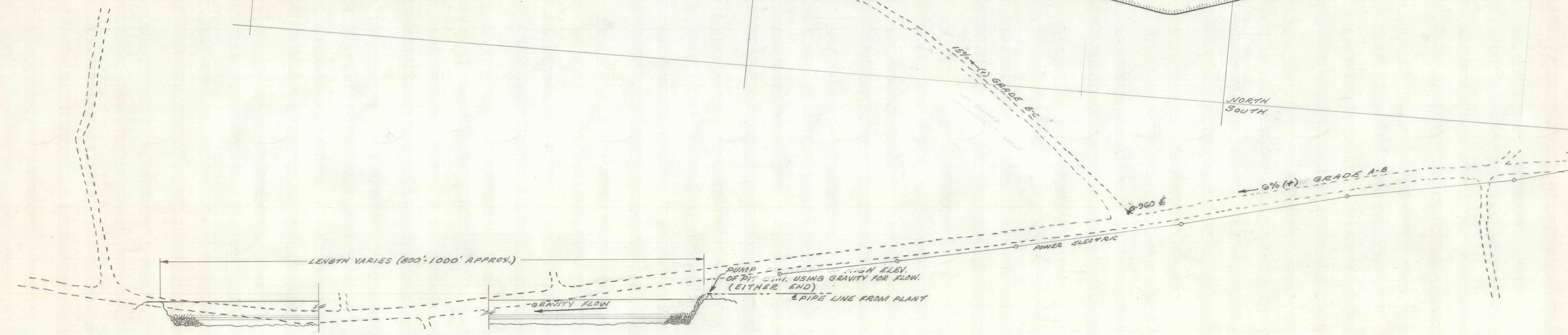
45 000 W



BUCK MTH. DRIFT
PRESENT PUMPING
SITE



NORTH
SOUTH



LONGITUDINAL SECTION (TYP)

LOCATION MAP OF STRIPPING PITS
WEST OF BUCK MTH. DRIFT (PRESENT PUMPING SITE)
NEAR RAUSCH CREEK TREATMENT PLANT
HEGINS TOWNSHIP SCHUYLKILL COUNTY, PA.

DEPT. OF ENVIRONMENTAL RESOURCES
RESOURCES MANAGEMENT - POTTSVILLE OFFICE
AUGUST 3, 1973 H.M.E. NOT TO SCALE
1" = 100'