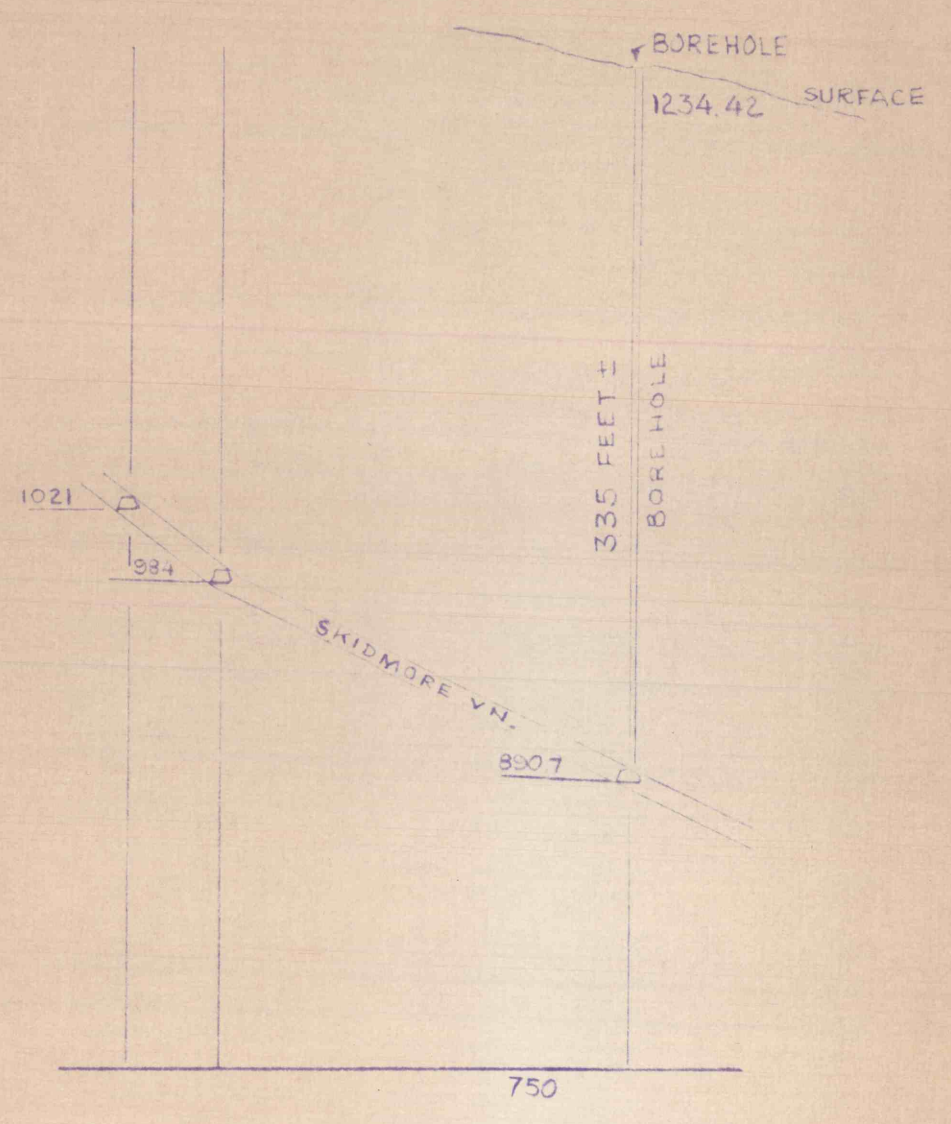
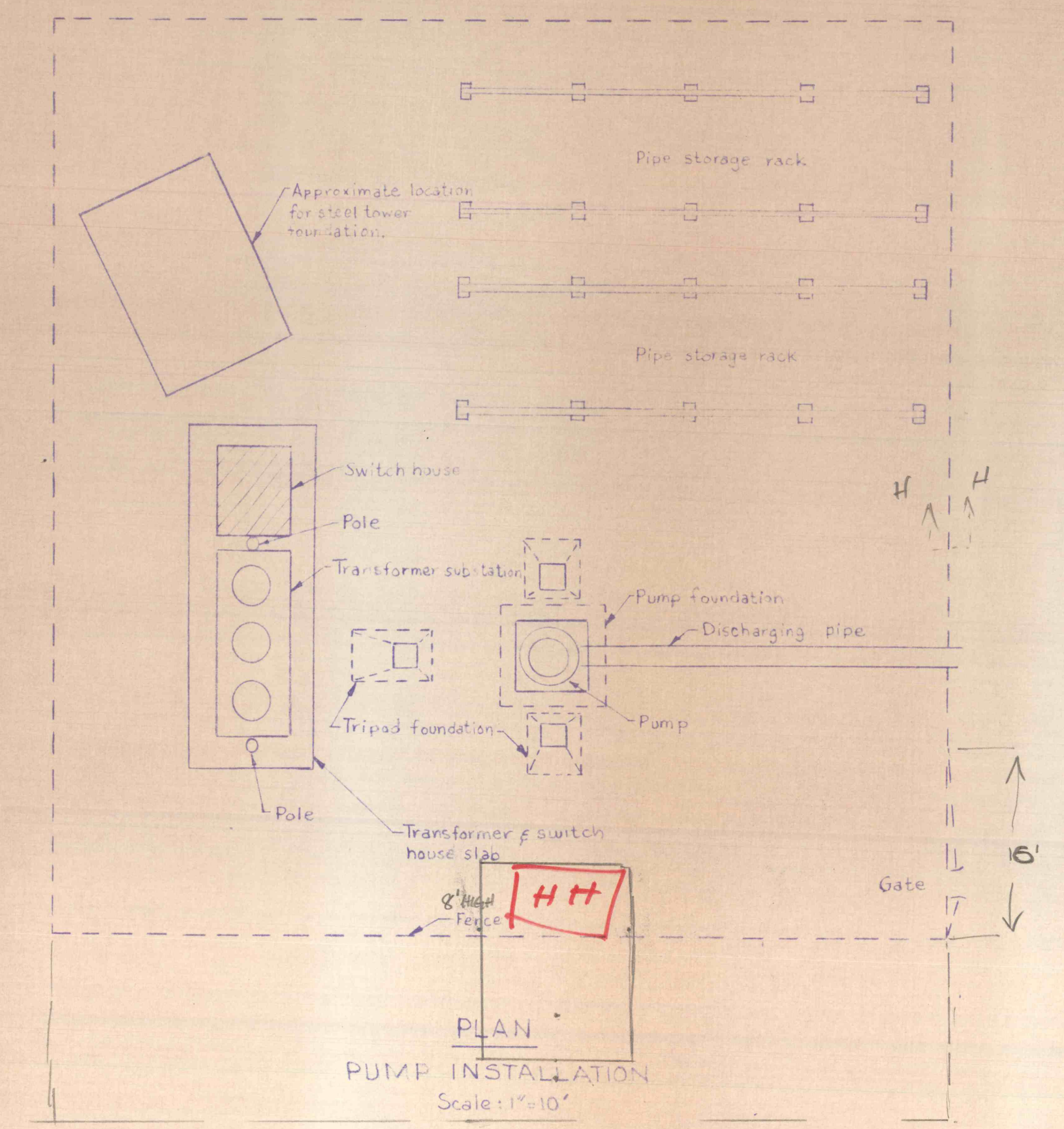


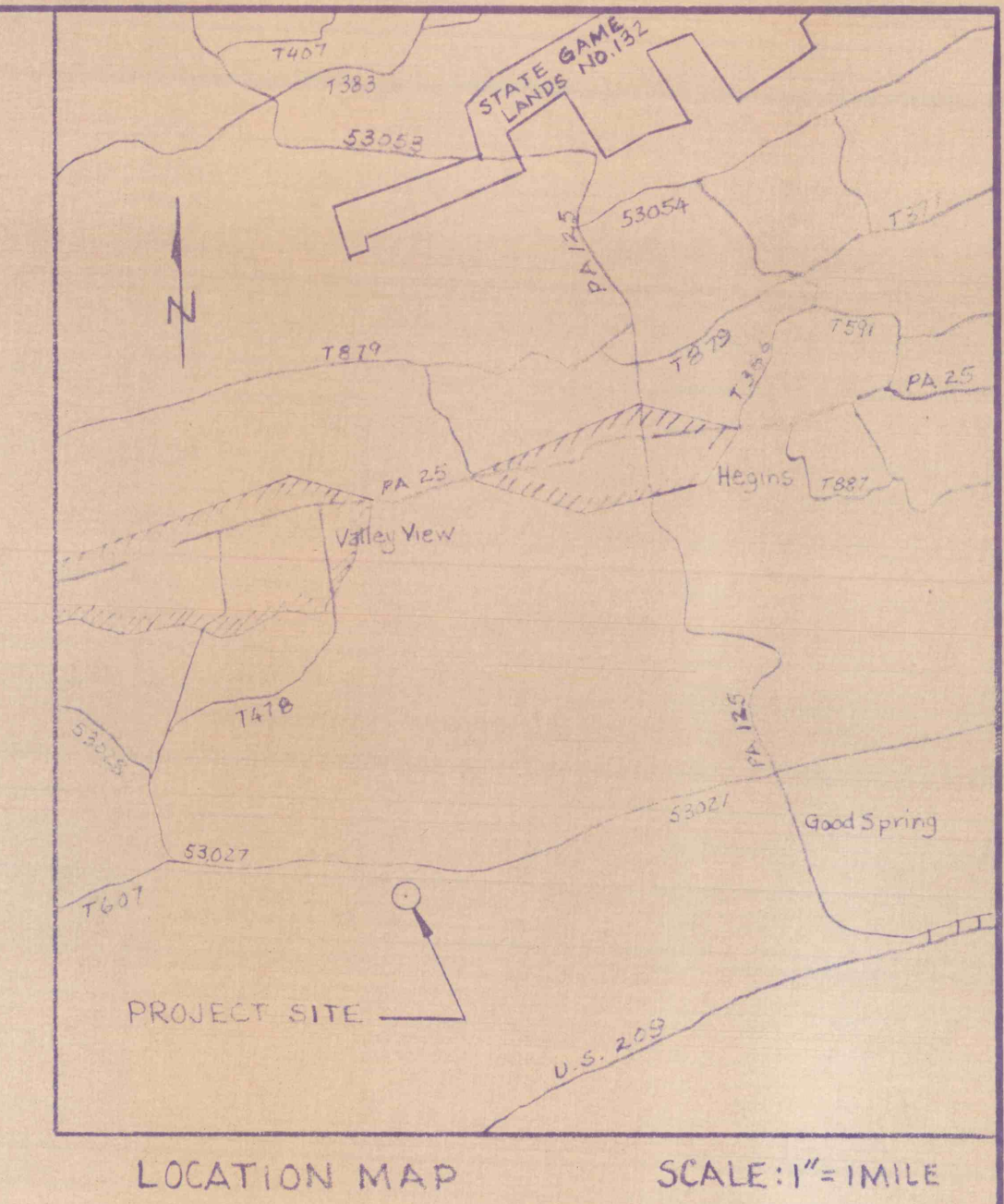
PLAN OF PROPOSED BOREHOLE
 TAKEN FROM MAP AND SURVEY OF
 WALTER J. MANHART REG. SUR. NO. 14708E
 JAN. 5, 1975
 SCALE: 1" = 100'



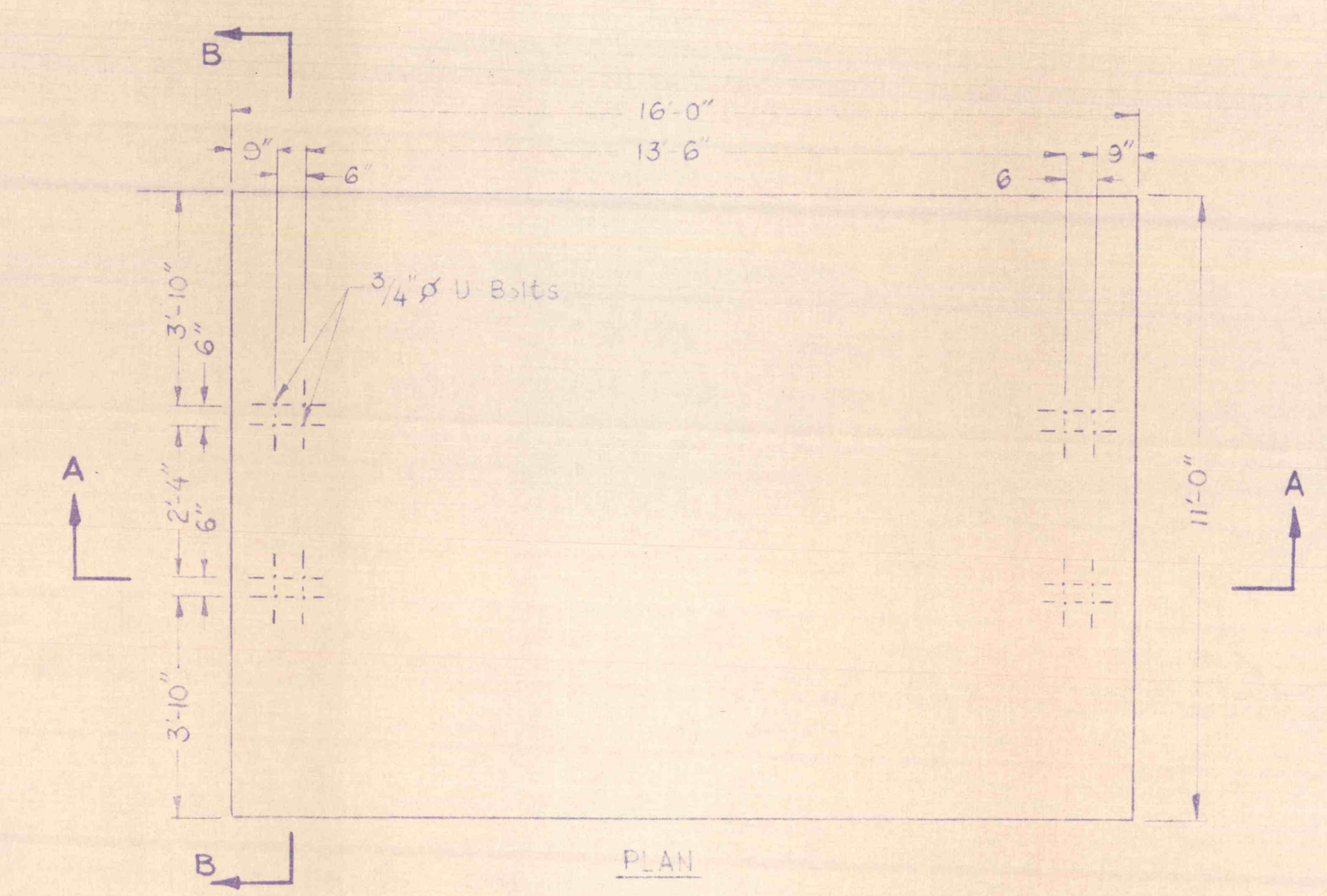
SECTION A1-A1
 Scale: 1" = 100'



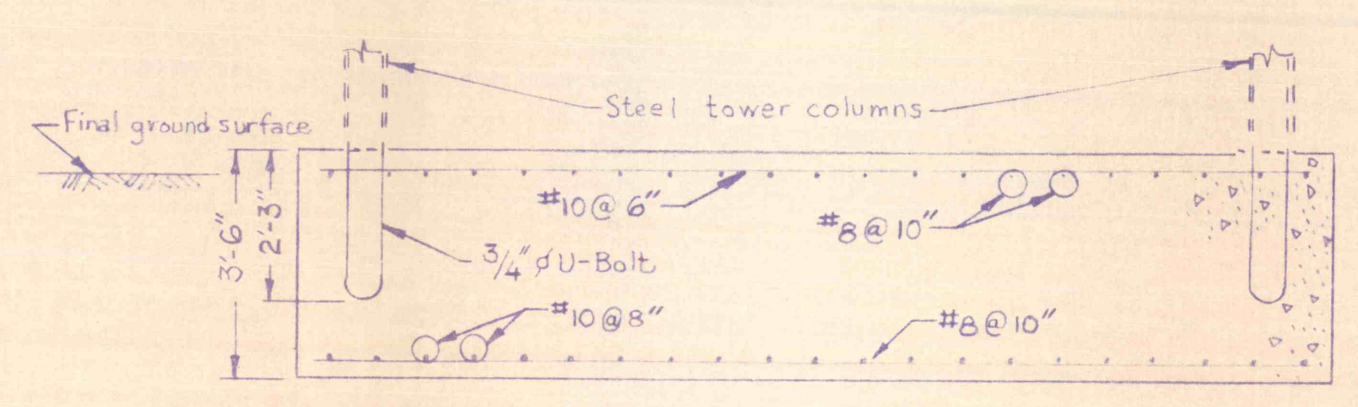
PLAN PUMP INSTALLATION
 Scale: 1" = 10'



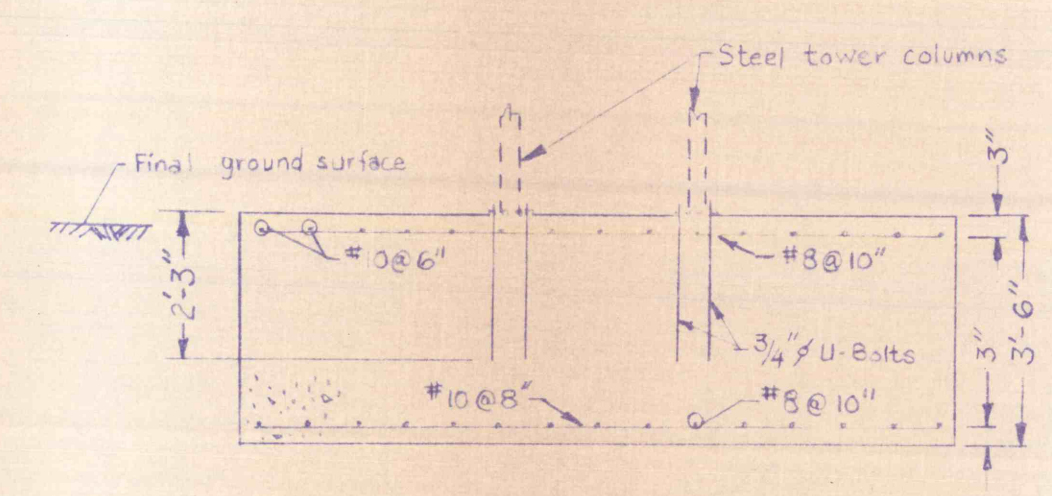
LOCATION MAP SCALE: 1" = 1 MILE



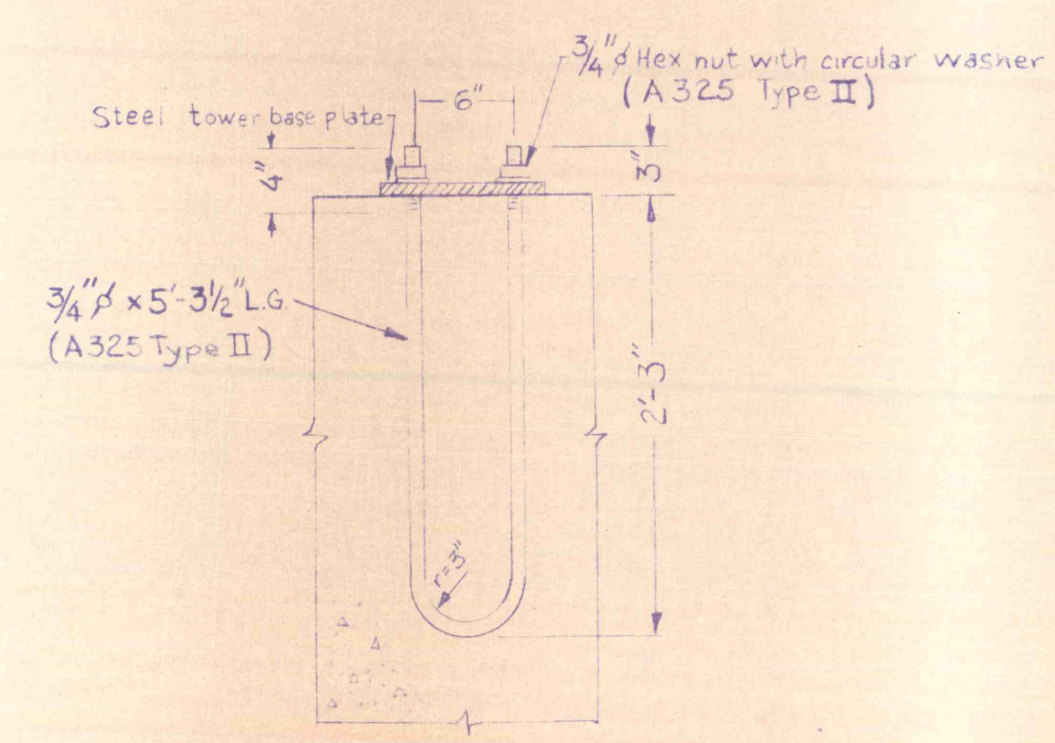
NOTE: Location of anchor bolts should be verified by checking the location of bolt holes in steel tower baseplates.



STEEL TOWER FOUNDATION
 Scale: 1 in. = 3 ft.



SECTION B-B
 Scale: 1" = 3'



U-BOLT DETAILS
 Scale: 1" = 1'

STEEL TOWER FOUNDATION

NO.	DATE	REVISION	APPR.
SUBMITTED			
DESIGN ENGINEER			
APPROVED			
DISTRICT ENGINEER			
APPROVED			
DIRECTOR - BUREAU OF RESOURCES PROGRAMMING			
(SEALS)			
COMMONWEALTH OF PENNSYLVANIA DEPARTMENT OF ENVIRONMENTAL RESOURCES OFFICE OF RESOURCES MANAGEMENT			
PROJECT NO. MWC-48			
BOREHOLE CONSTRUCTION AND DEEP-WELL PUMP INSTALLATION NEAR VALLEY VIEW			
SCHUYLKILL COUNTY PENNSYLVANIA			
LOCATION, WORK AREA, PLAN SECTIONS & DETAILS			
DRAWN BY MRF	DATE 16 AUG 76	DRAWING NO.	
CHECKED BY	SCALE AS SHOWN	2 of 3	