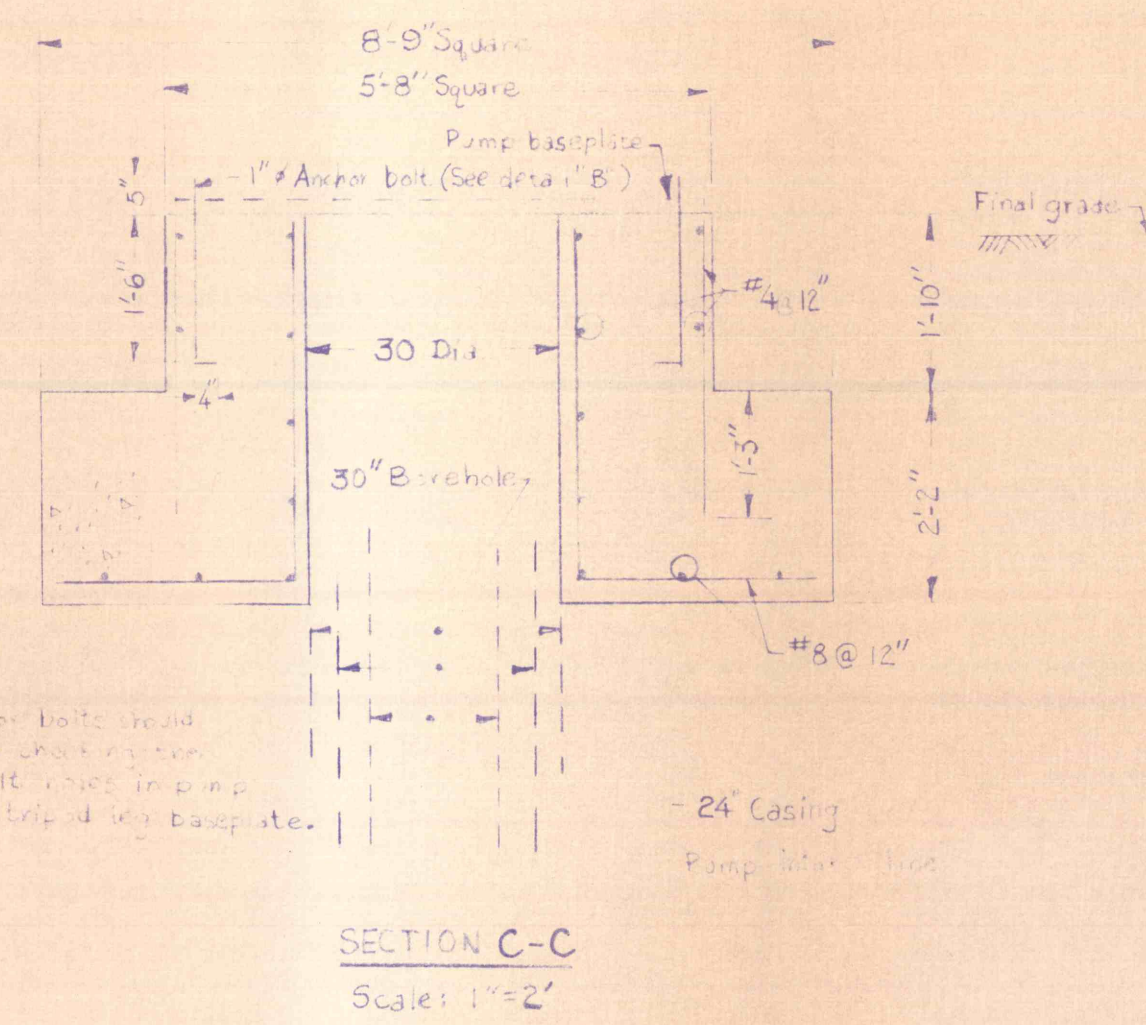
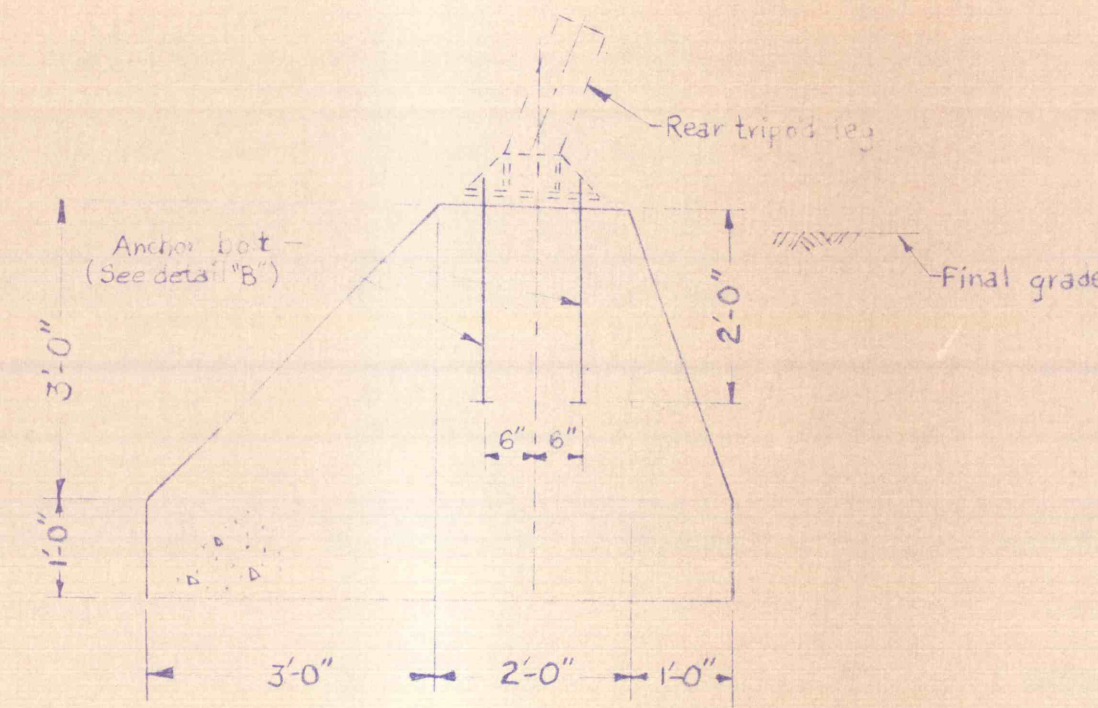


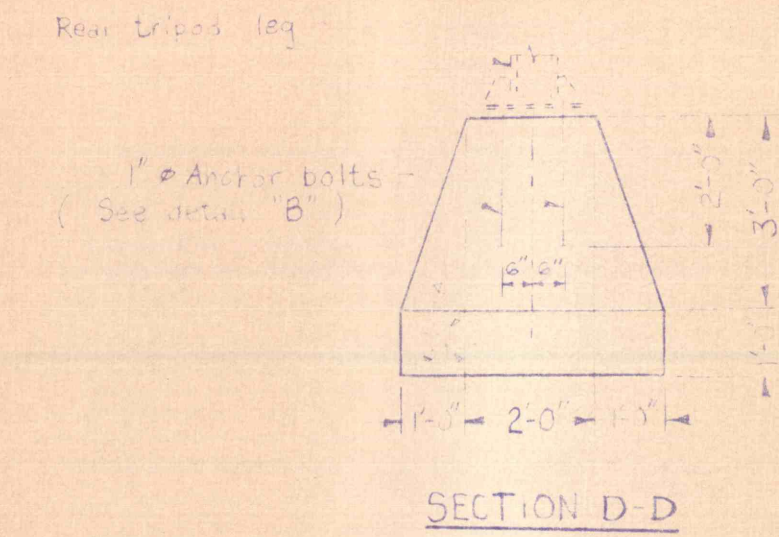
PUMP & TRIPOD FOUNDATIONS



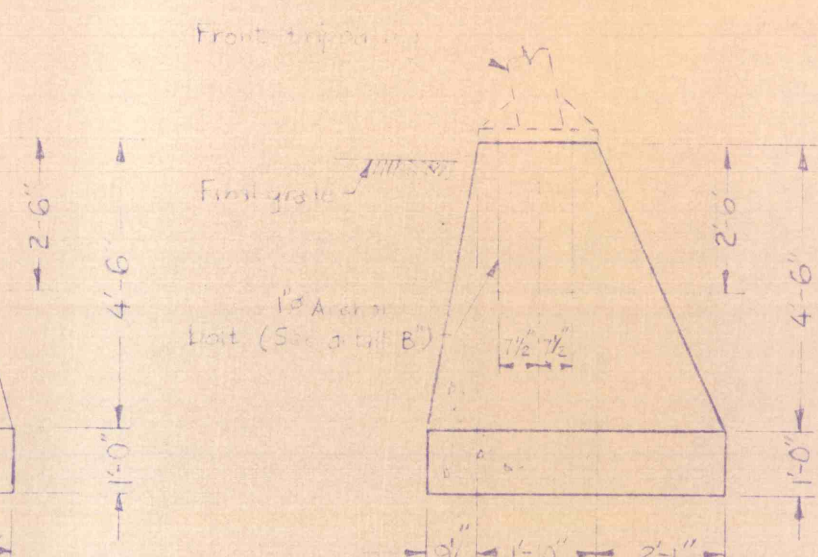
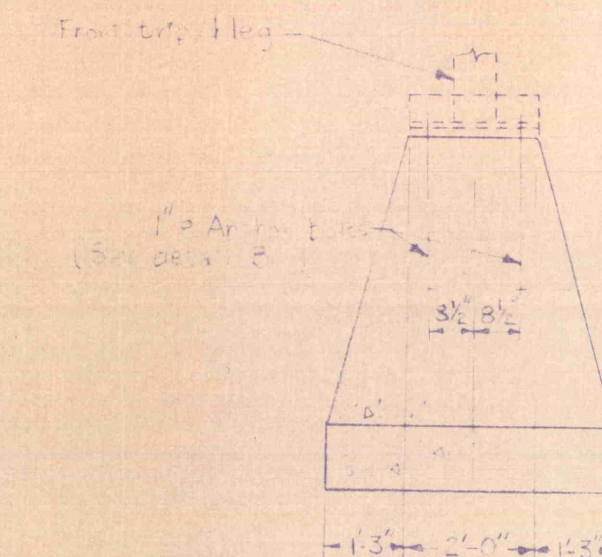
SECTION C-C
Scale: 1" = 2'



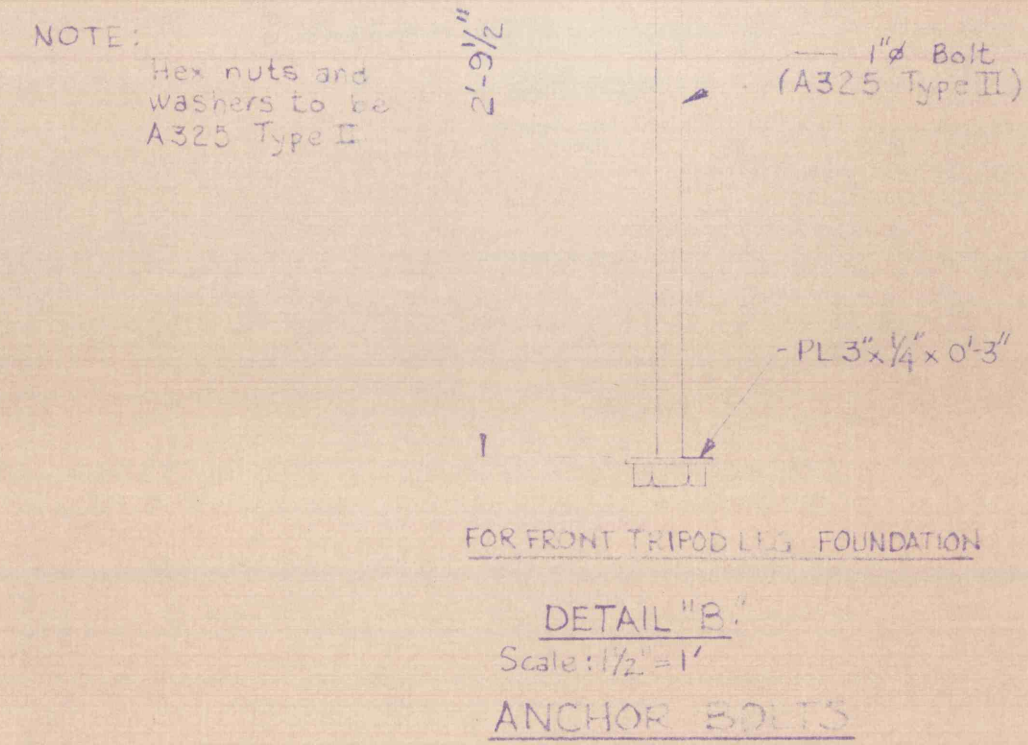
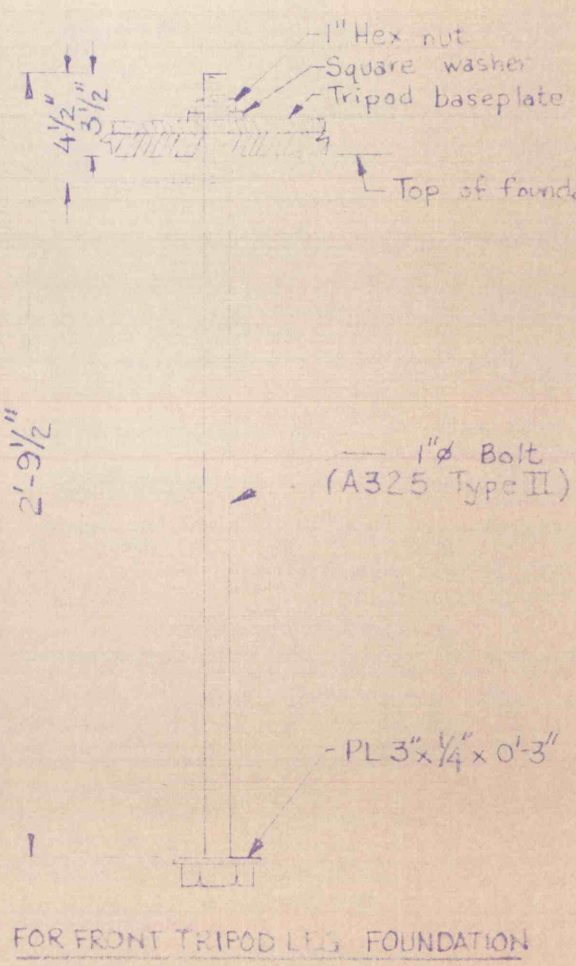
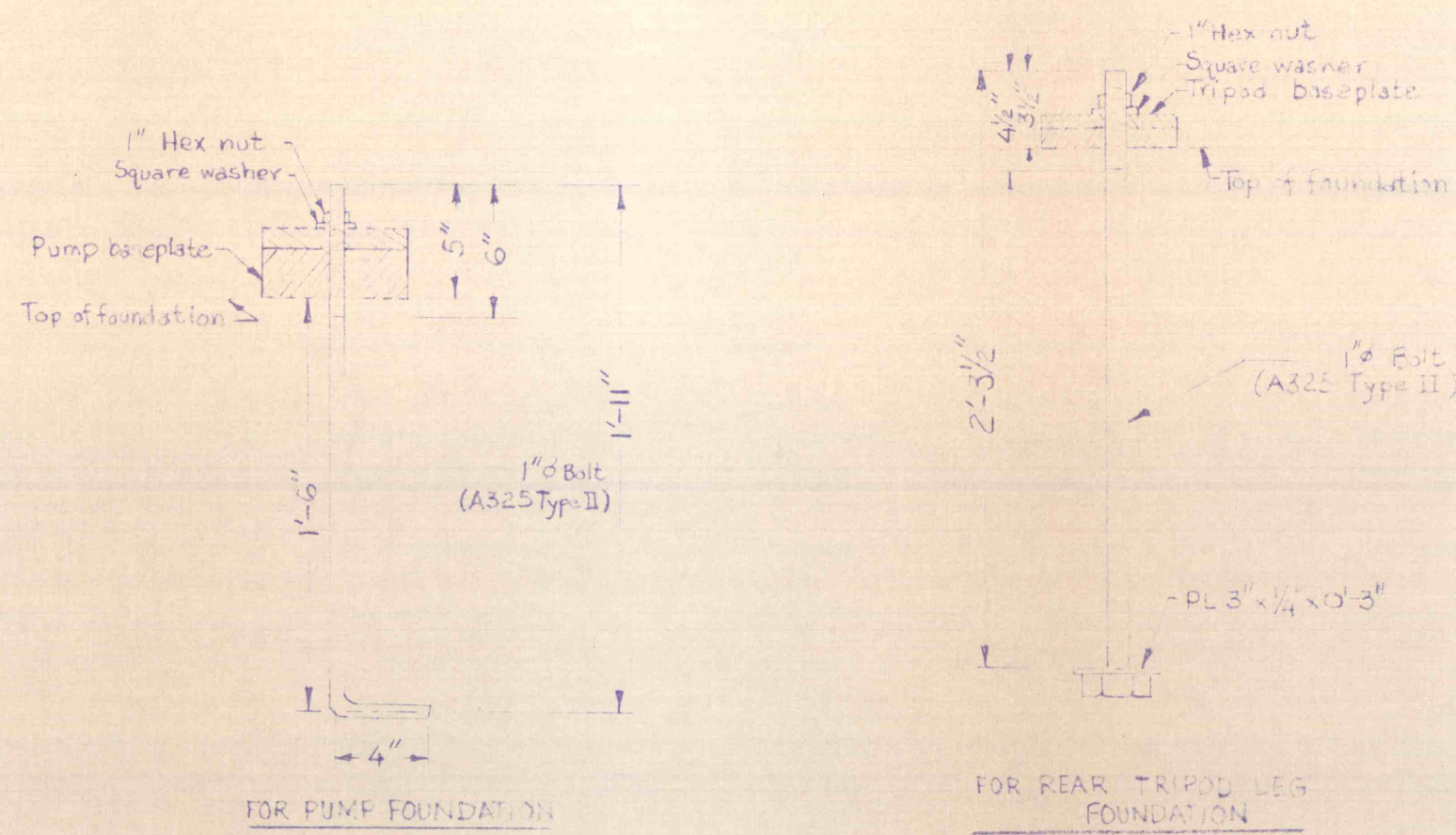
PUMP & TRIPOD FOUNDATION



NOTE: Location of anchor bolts should be verified by checking the location of bolt holes in pump baseplate and tripod leg baseplate.



TRIPOD FOUNDATIONS
Scale: 1" = 3'



DETAIL "B"
Scale: 1/2" = 1"
ANCHOR BOLTS

NO.	DATE	REVISION	APPR.
SUBMITTED			
DESIGN ENGINEER			
APPROVED			
DISTRICT ENGINEER			
APPROVED			
DIRECTOR - BUREAU OF RESOURCES PROGRAMMING			
(SEALS)			
COMMONWEALTH OF PENNSYLVANIA DEPARTMENT OF ENVIRONMENTAL RESOURCES OFFICE OF RESOURCES MANAGEMENT			
PROJECT NO. MWC-48			
BOREHOLE CONSTRUCTION AND DEEP-WELL PUMP INSTALLATION NEAR VALLEY VIEW			
SCHUYLKILL COUNTY		PENNSYLVANIA	
PLAN, SECTIONS & DETAILS			
DRAWN BY MRF	DATE 16 AUG 76	DRAWING NO. 3 of 3	
CHECKED BY	SCALE AS SHOWN		