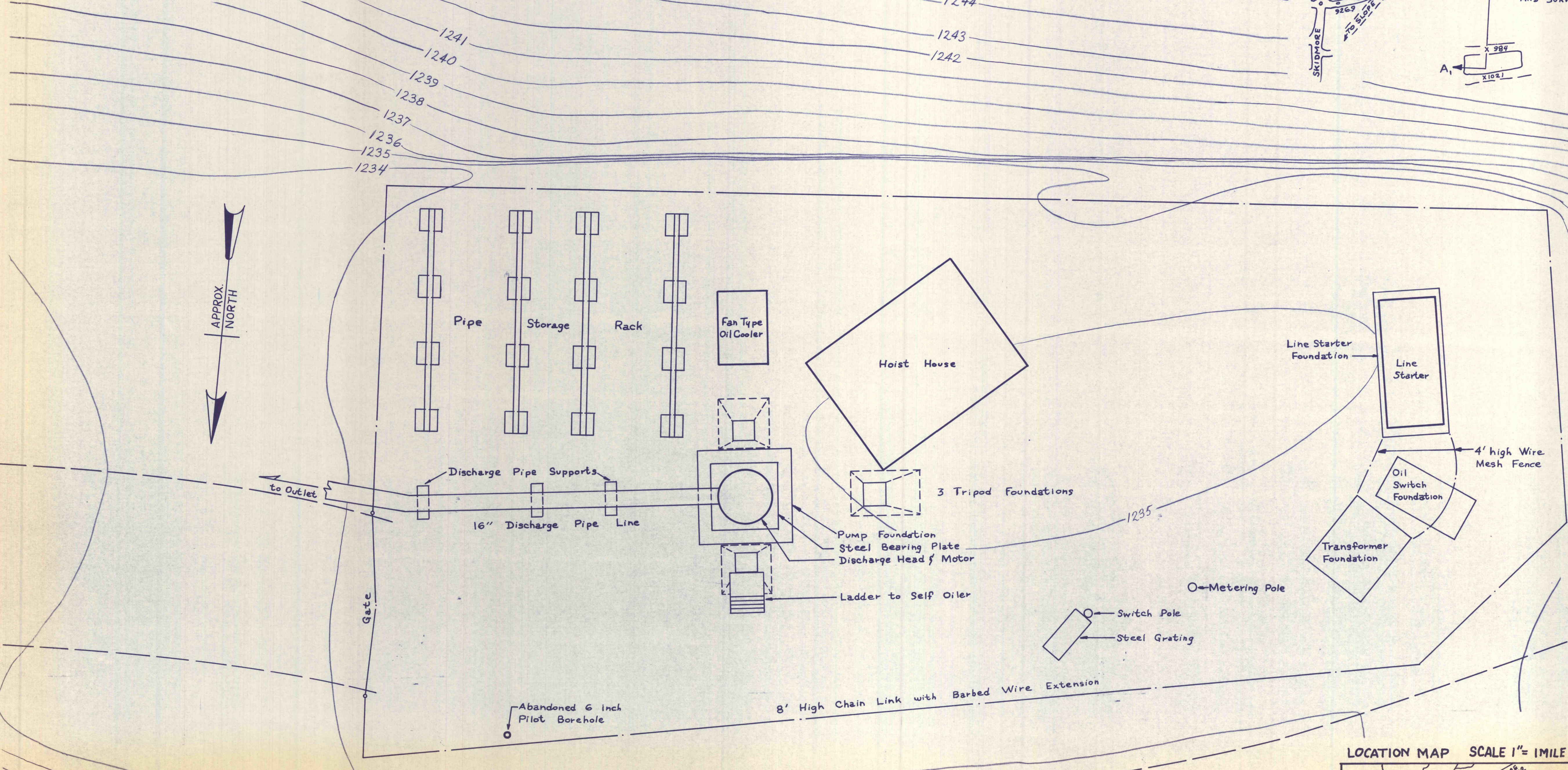
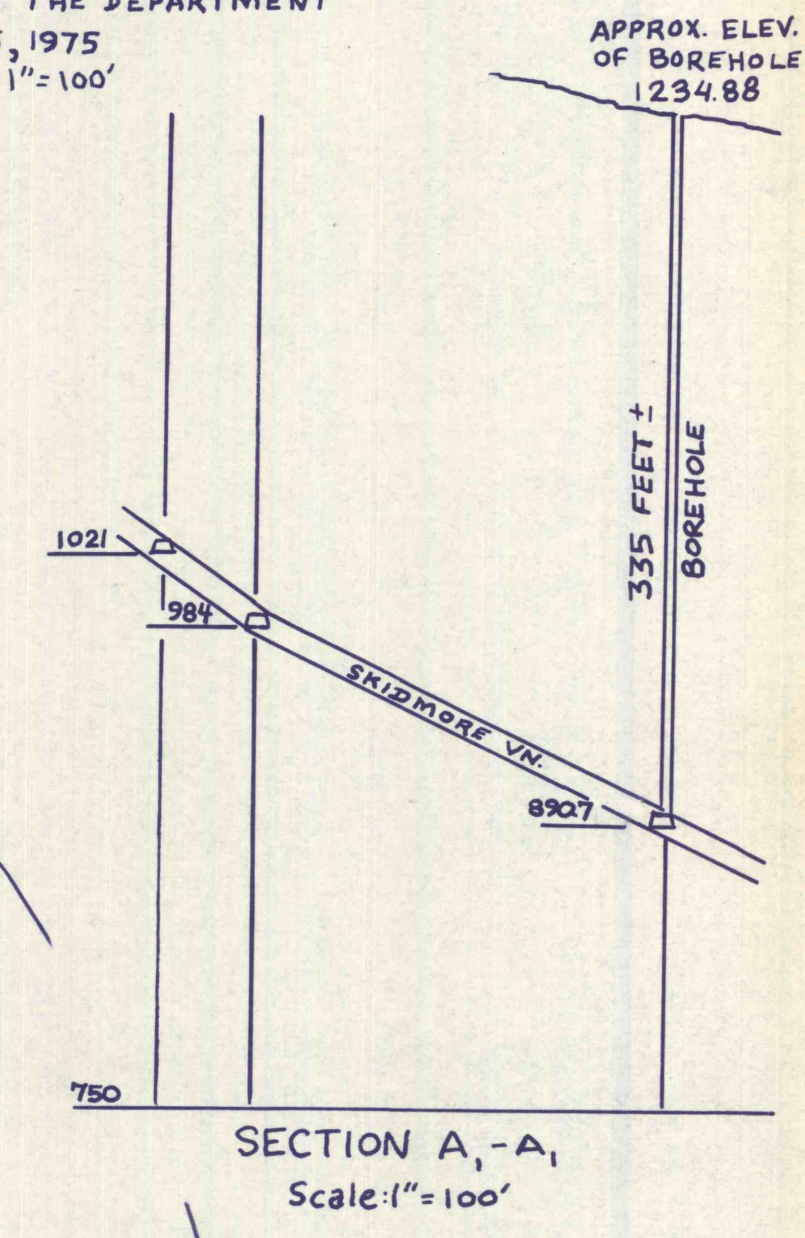
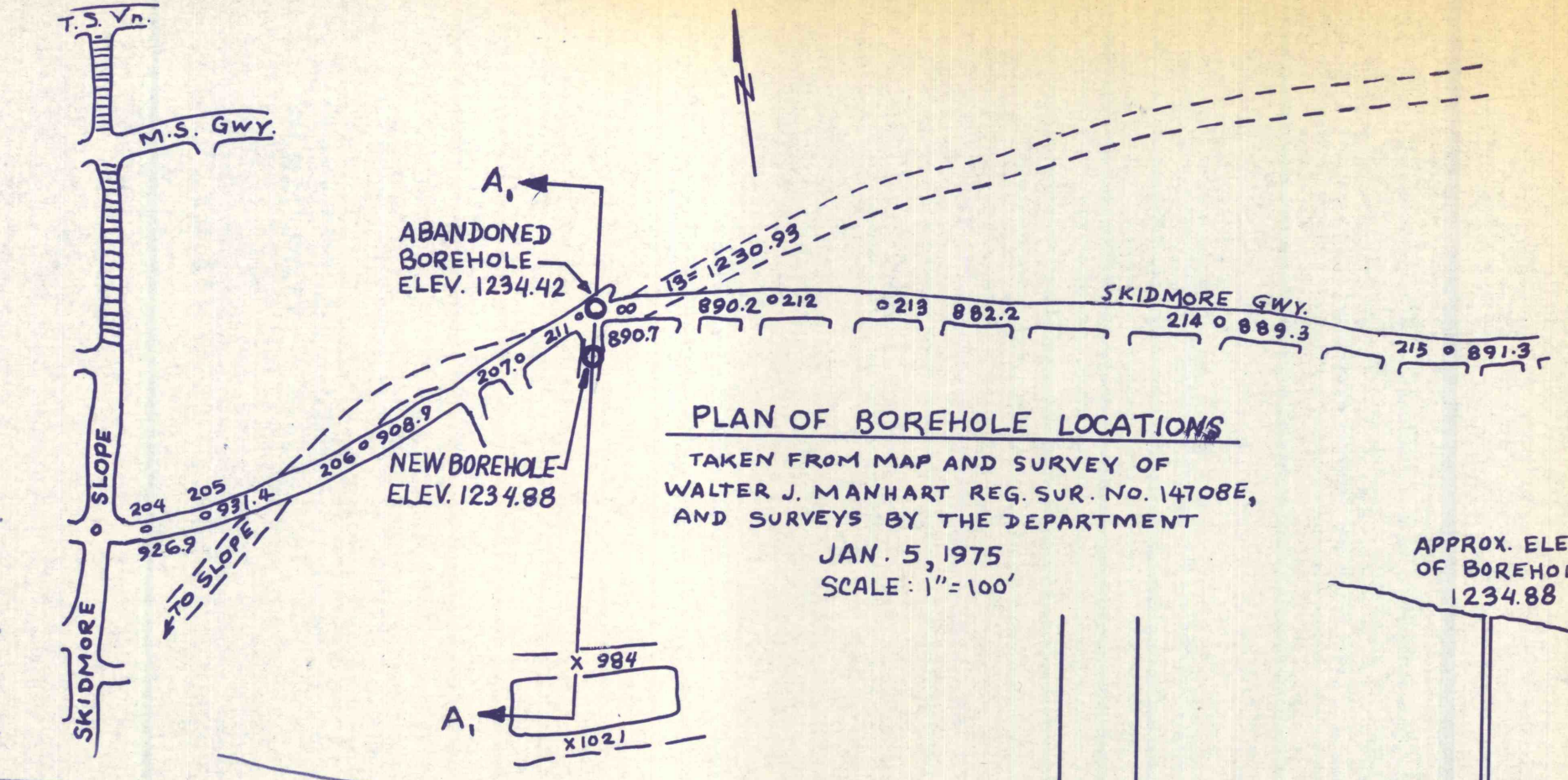
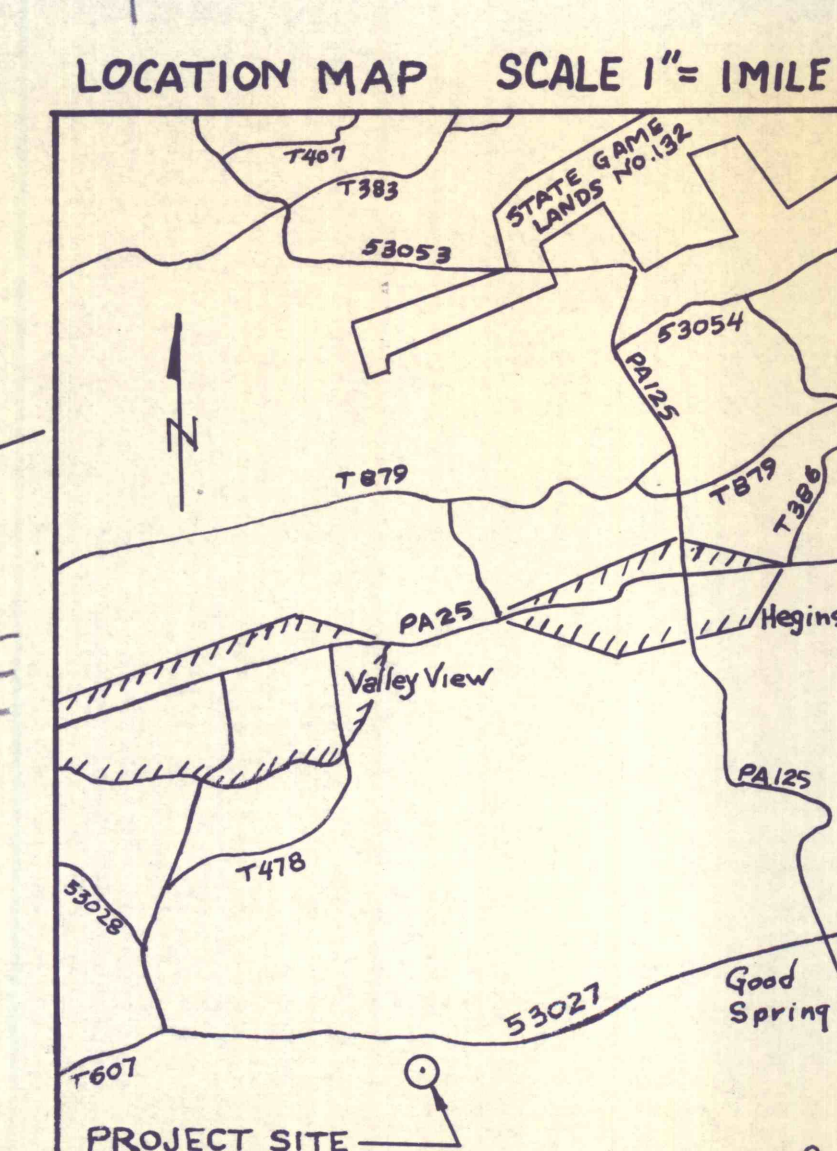


DISCHARGE OUTLET DETAIL
 Pipe Outside Fenced Area Was Installed by Department Personnel



NO.	DATE	REVISION	APPR.
7-6-79		AS BUILT. REPLACES VOIDED DWG. NO. 2 OF 5.	
SUBMITTED		<i>M. Yorko</i> DESIGN ENGINEER	
APPROVED		<i>M. Uchino</i> DISTRICT ENGINEER	
APPROVED		DIRECTOR - BUREAU OF OPERATIONS	



COMMONWEALTH OF PENNSYLVANIA
 DEPARTMENT OF ENVIRONMENTAL RESOURCES
 OFFICE OF RESOURCES MANAGEMENT

PROJECT NO. MWC-48

BOREHOLE CONSTRUCTION AND DEEP-WELL PUMP INSTALLATION NEAR VALLEY VIEW

SCHUYLKILL CO. PENNSYLVANIA

LOCATION, WORK AREA, PLAN AND SECTION

DRAWN BY	DATE	DRAWING NO.
SGH	6 JULY 79	4 of 5
CHECKED BY	SCALE	
MRF	1"=5'	