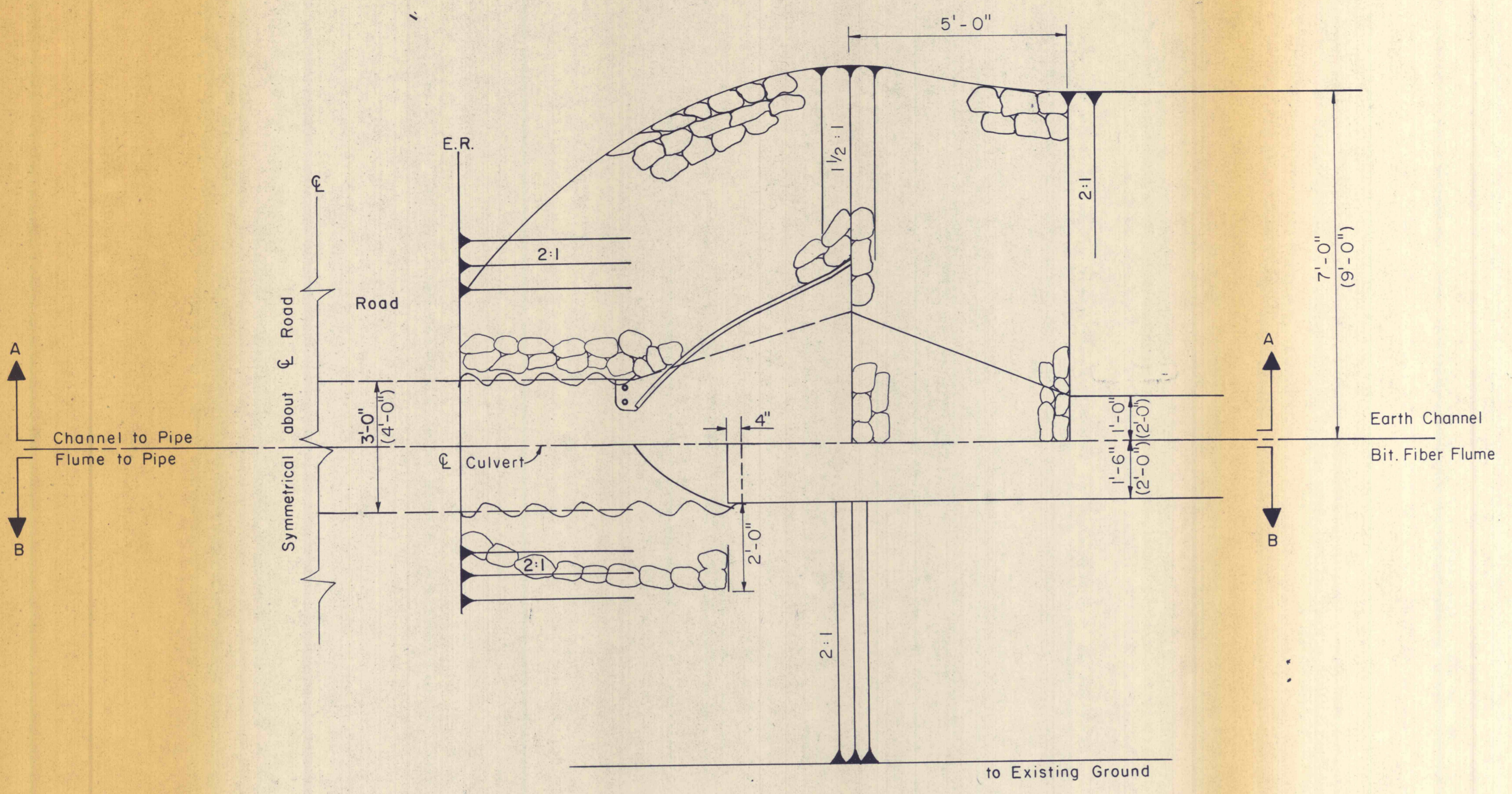


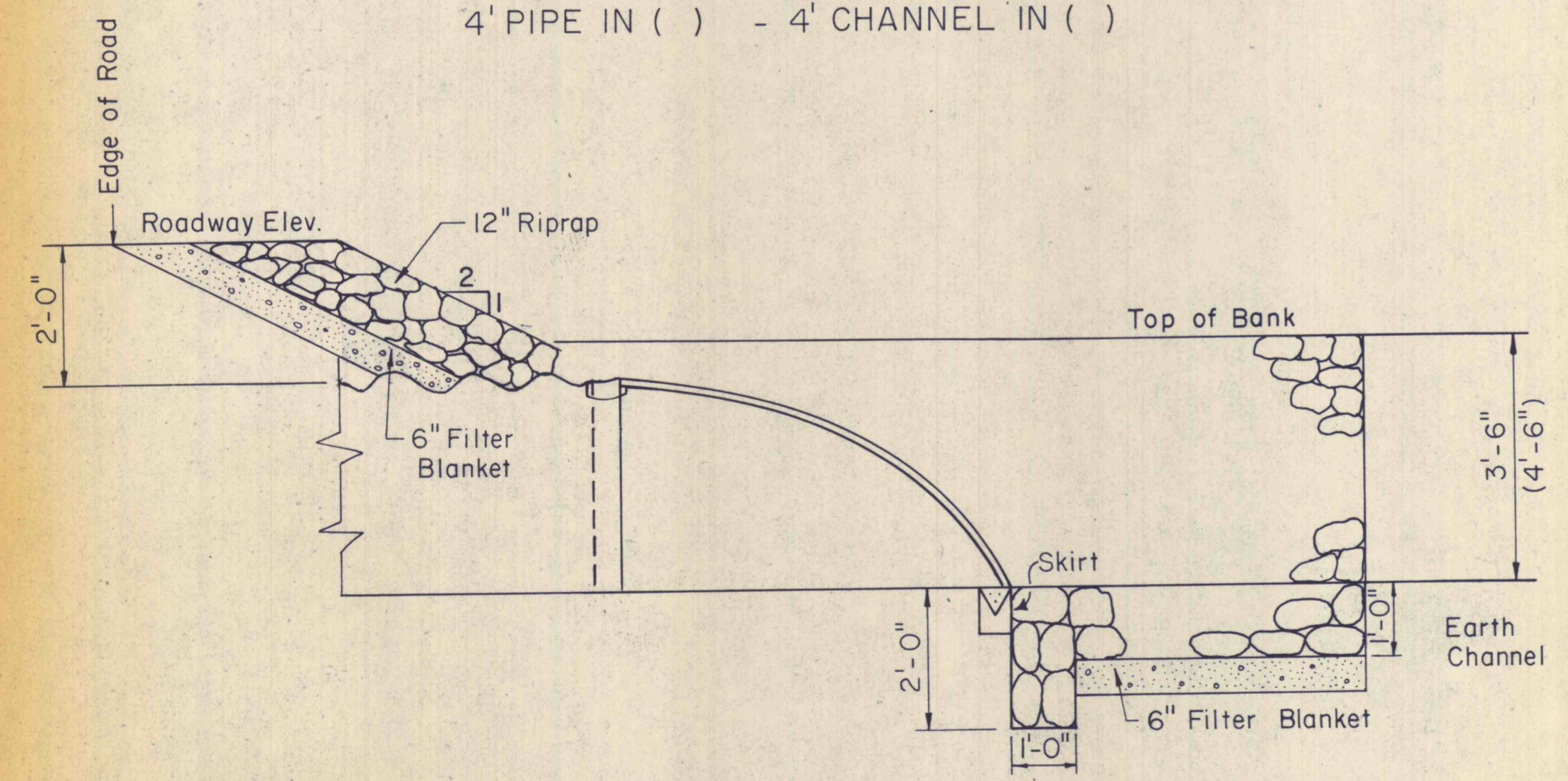
Revision No. 1 for Addendum No. 1



PLAN

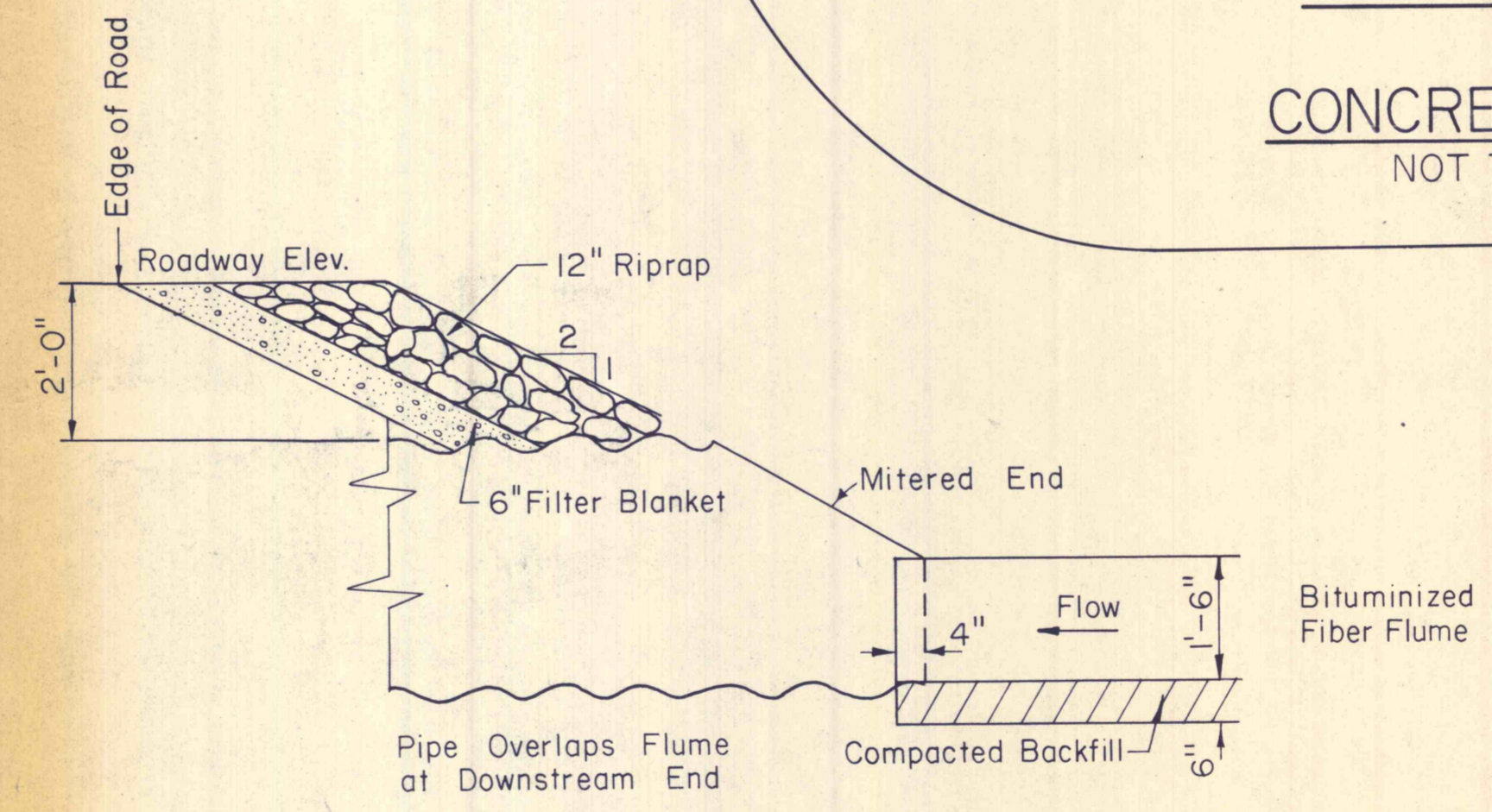
SCALE: 1/2" = 1'

3' PIPE SHOWN - 2' CHANNEL SHOWN  
4' PIPE IN ( ) - 4' CHANNEL IN ( )

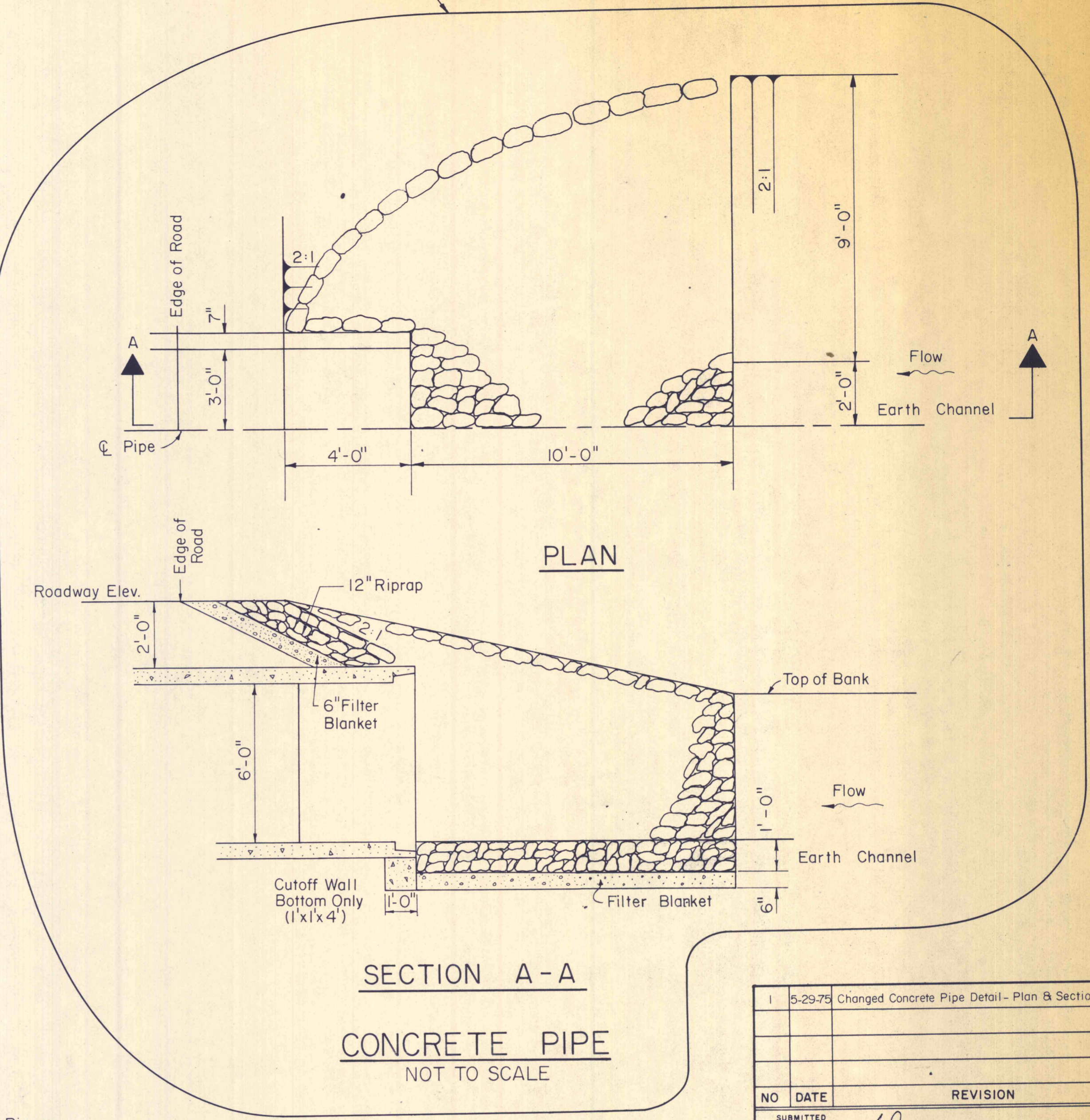


SECTION A-A

2' CHANNEL SHOWN  
4' CHANNEL IN ( )



SECTION B-B



SECTION A-A

CONCRETE PIPE  
NOT TO SCALE

1	5-29-75	Changed Concrete Pipe Detail - Plan & Section	RMZ
NO	DATE	REVISION	APPR.
SUBMITTED			
<i>Richard B. Ulp</i> PROFESSIONAL			
APPROVED			
<i>Robert A. Pomeroy</i> CHIEF - DIVISION OF MINE RECLAMATION			
APPROVED			
<i>Robert A. Pomeroy</i> DIRECTOR - BUREAU OF DESIGN			



COMMONWEALTH OF PENNSYLVANIA  
DEPARTMENT OF ENVIRONMENTAL RESOURCES  
OFFICE OF RESOURCES MANAGEMENT

PROJECT NO. SL 113-5-1

MINE DRAINAGE POLLUTION ABATEMENT  
COAL RUN  
SHAMOKIN CREEK WATERSHED  
NORTHUMBERLAND COUNTY, PA.

ERDMAN, ANTHONY, ASSOCIATES  
Consulting Engineers  
Comp Hill, Pa. Rochester, N.Y.

RIPRAP ENTRANCE AND  
OUTLET DETAILS

DRAWN BY	DATE	DRAWING NO.
JM	5-9-75	26 of 28
CHECKED BY	SCALE	
DHC	AS SHOWN	