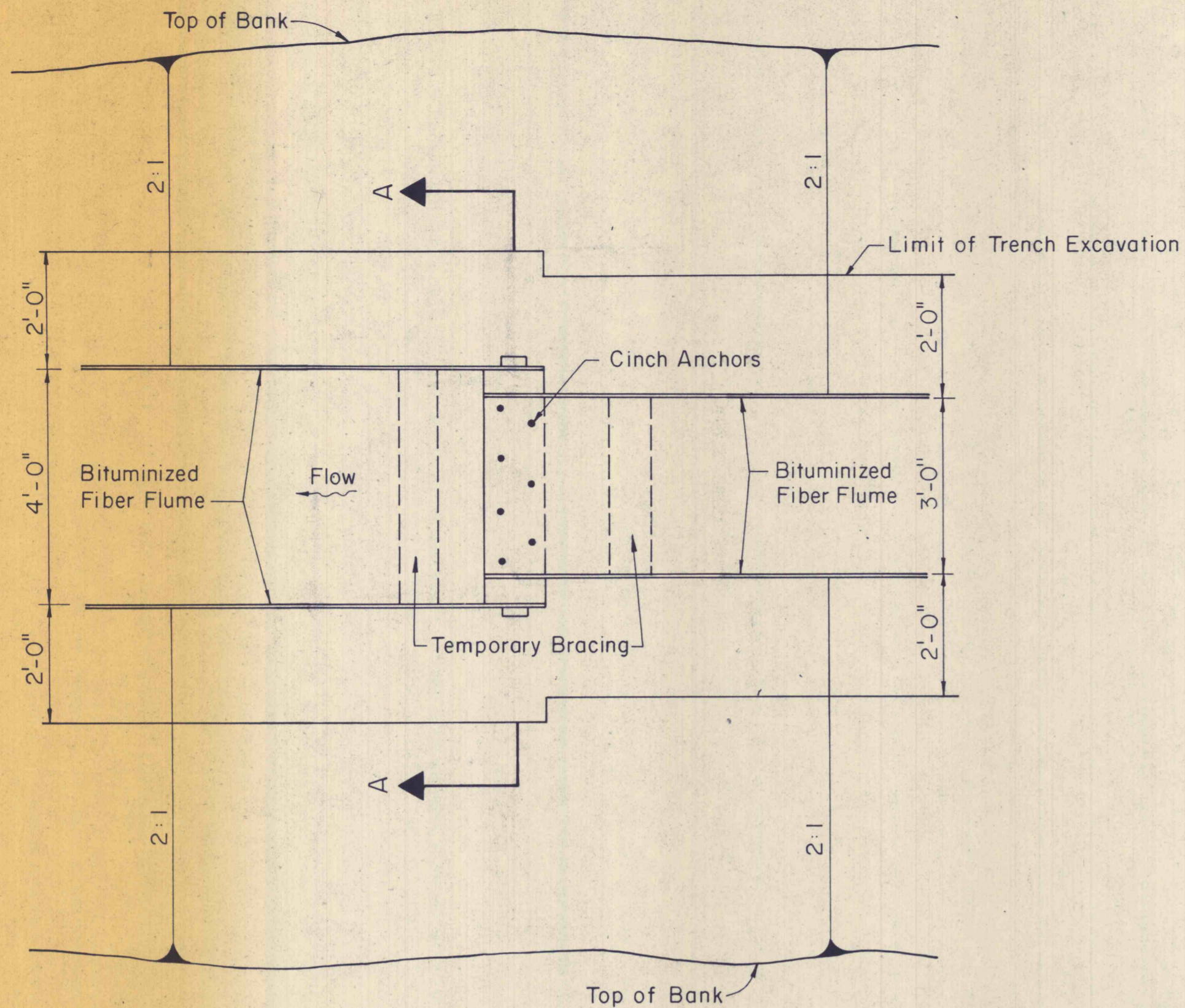
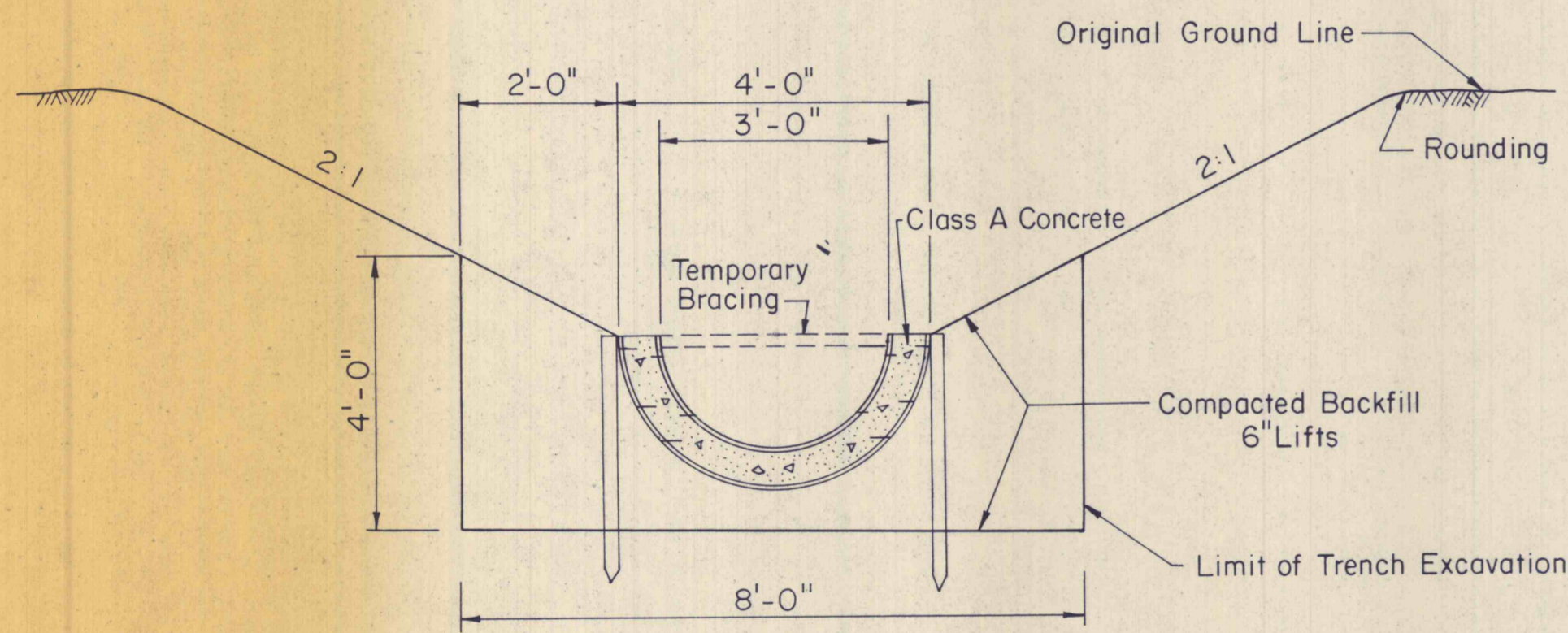


Note: See Concrete Paved Swale Flume Entrance Detail for Cinch Anchors Spacing.

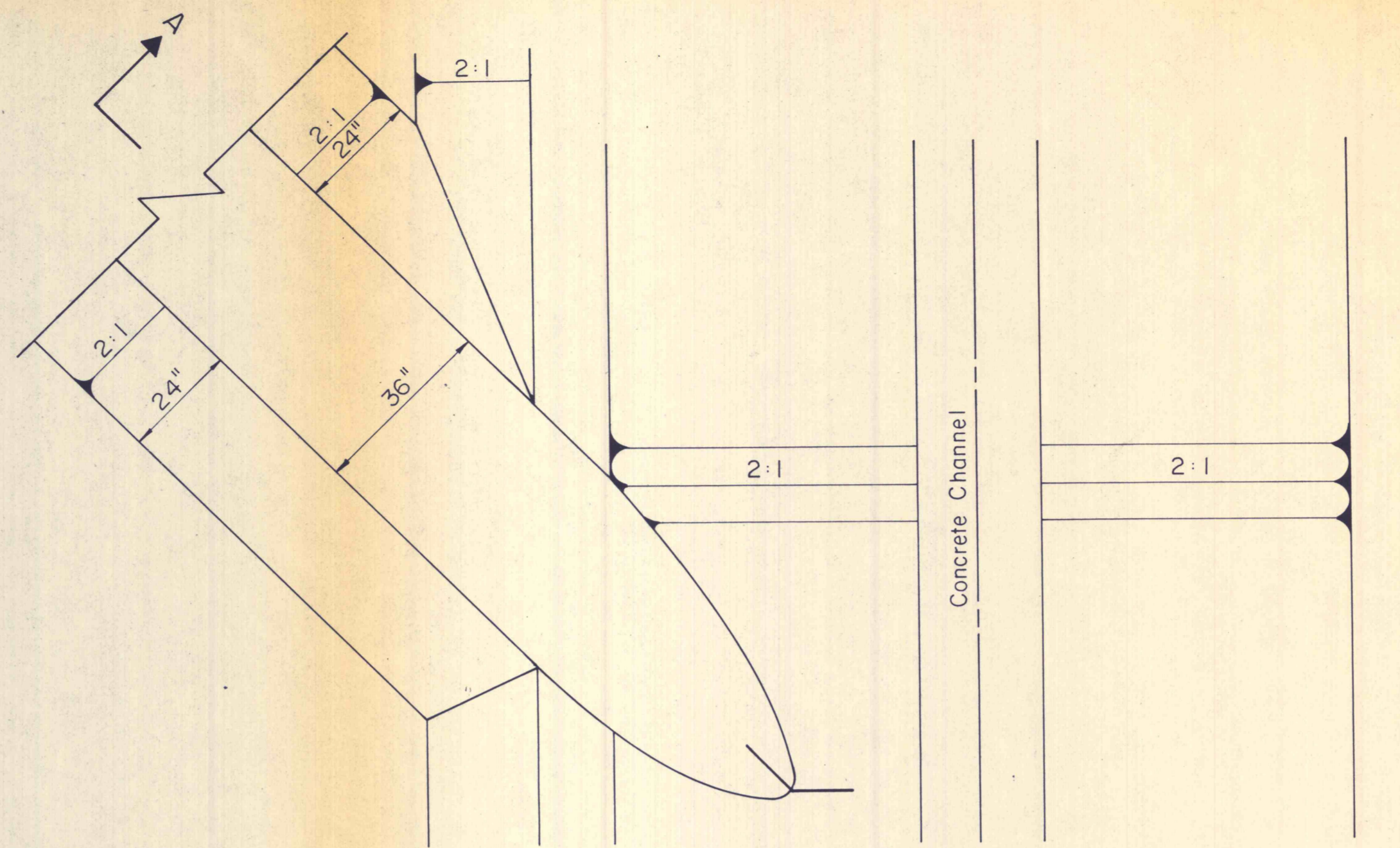


PLAN



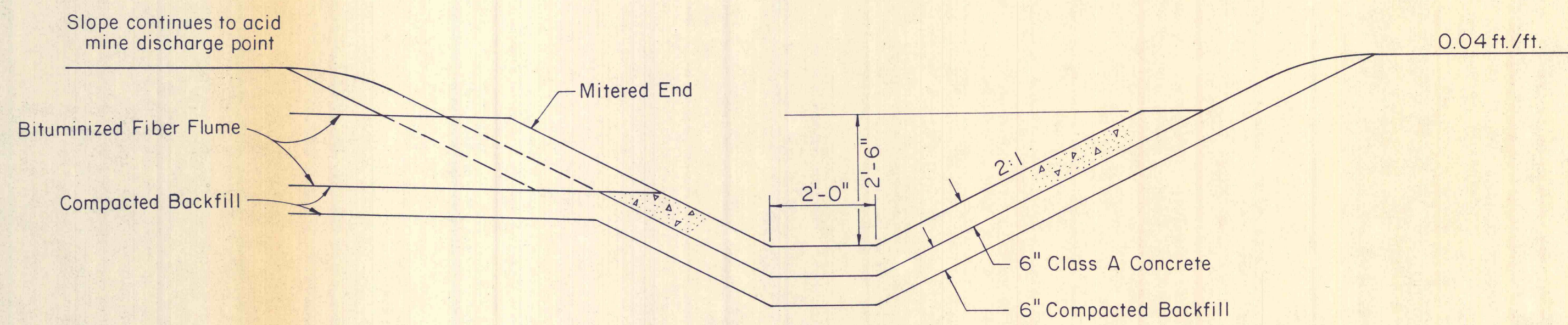
SECTION A-A

BITUMINIZED FIBER FLUME TRANSITION
NOT TO SCALE



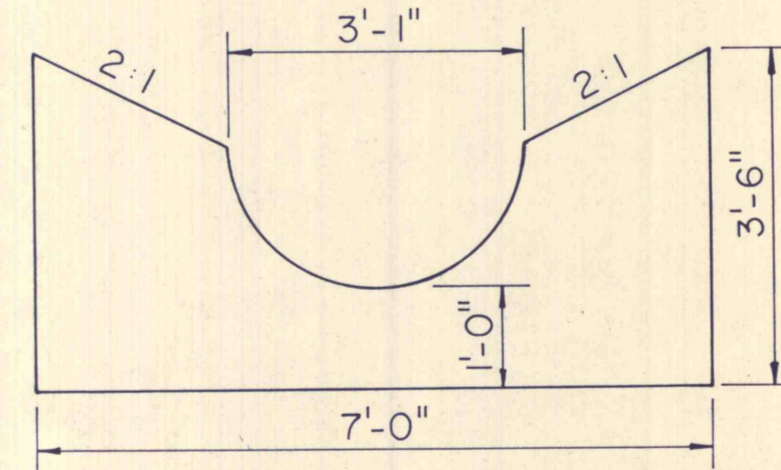
PLAN

Install 36" Bituminized Fiber Flume Half Section from Acid Discharge Point to Channel (Approx. location indicated on plan)



SECTION A-A

FLUME ENTRANCE TO CONCRETE CHANNEL FROM ACID DISCHARGE POINT
NOT TO SCALE

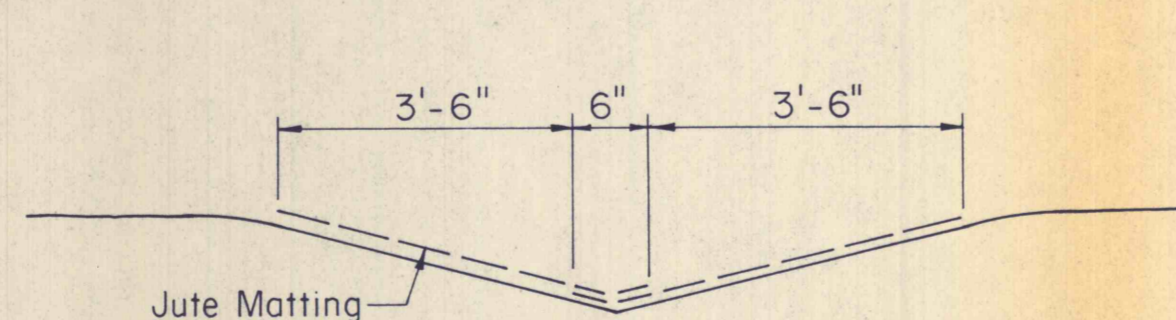


FRONT

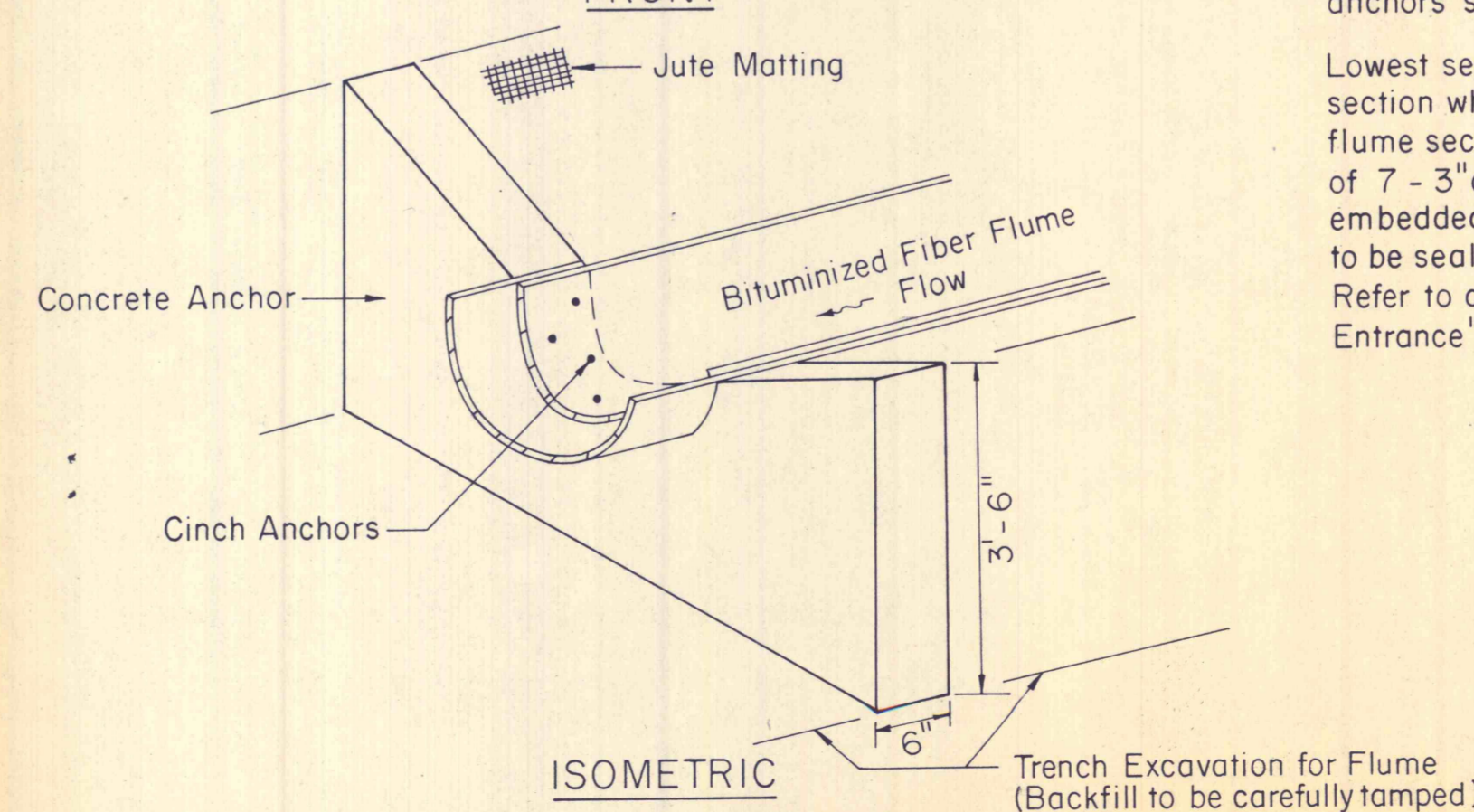
NOTES:

Anchors to be used where slope of flume is 20% or greater. Anchors will be installed at ends and midsection of flume sections when used. Stakes will be needed between anchors so 5'-0" spacing will be maintained.

Lowest section to be overlapped 6" by next section where anchors are used. Overlapped flume sections to be spliced with minimum of 7 - 3" cinch anchors or expansion bolts embedded in concrete, staggered rows. Joint to be sealed with a mastic sealing compound. Refer to detail of "Concrete Paved Swale Flume Entrance" for spacing of cinch anchors.

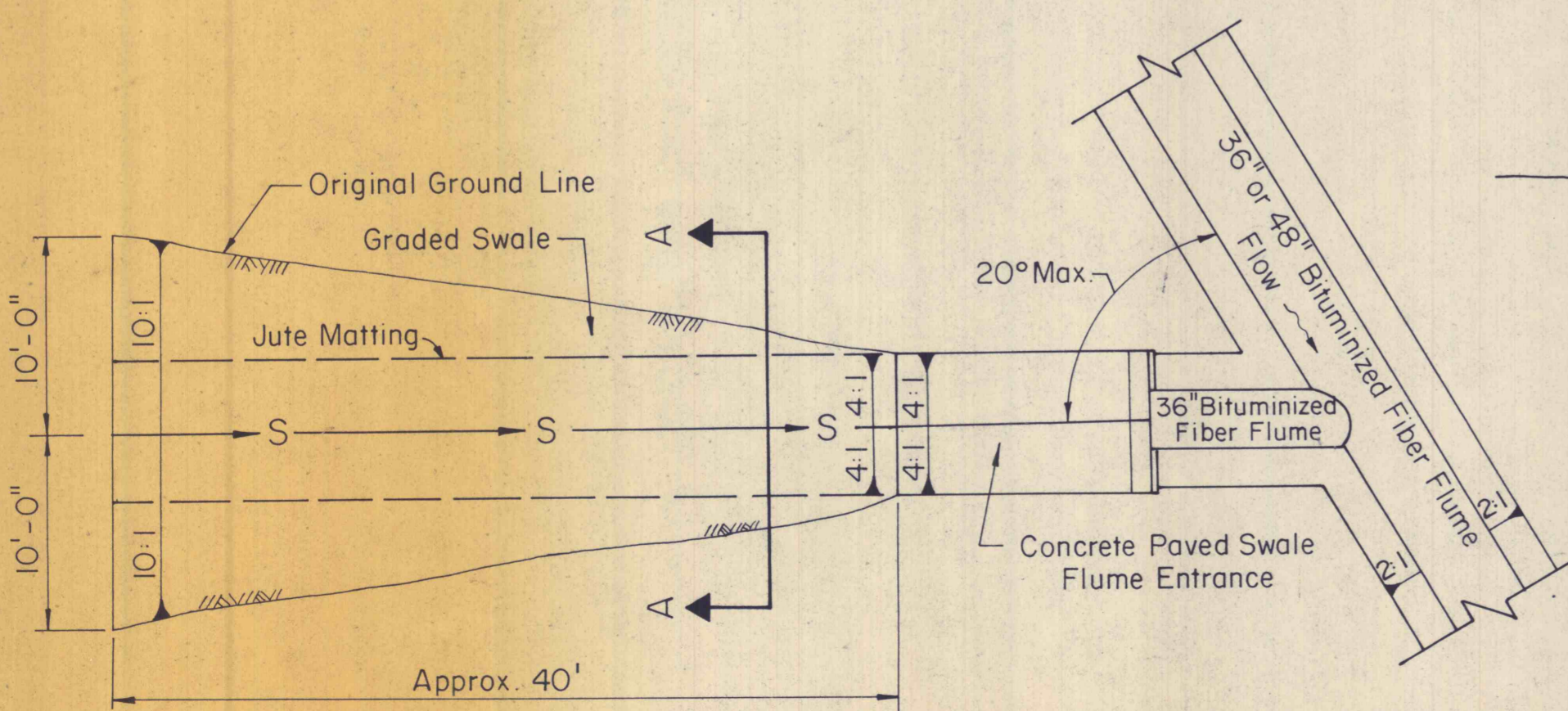


SECTION A-A



ISOMETRIC

BITUMINIZED FIBER FLUME CONCRETE ANCHOR
NOT TO SCALE

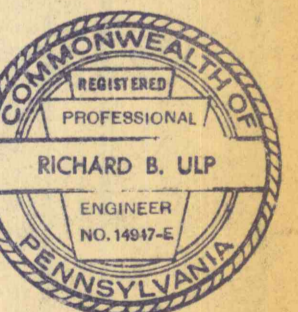


PLAN

SWALE ENTRANCE TO BITUMINIZED FIBER FLUME
NOT TO SCALE

NO	DATE	REVISION	APPR.

SUBMITTED	<i>Richard B. Ulp</i> PROFESSIONAL
APPROVED	<i>Robert A. Roman</i> CHIEF - DIVISION OF MINE RECLAMATION
APPROVED	<i>Dr. M. J. ...</i> DIRECTOR - BUREAU OF DESIGN



COMMONWEALTH OF PENNSYLVANIA
DEPARTMENT OF ENVIRONMENTAL RESOURCES
OFFICE OF RESOURCES MANAGEMENT

PROJECT NO. SL 113-5-1

MINE DRAINAGE POLLUTION ABATEMENT
COAL RUN
SHAMOKIN CREEK WATERSHED
NORTHUMBERLAND COUNTY, PA.

ERDMAN, ANTHONY, ASSOCIATES
Consulting Engineers
Camp Hill, Pa. Rochester, N.Y.

FIBER FLUME DETAILS

DRAWN BY	GMS	DATE	5-9-75	DRAWING NO.	24 of 28
CHECKED BY	DHC	SCALE	AS SHOWN		