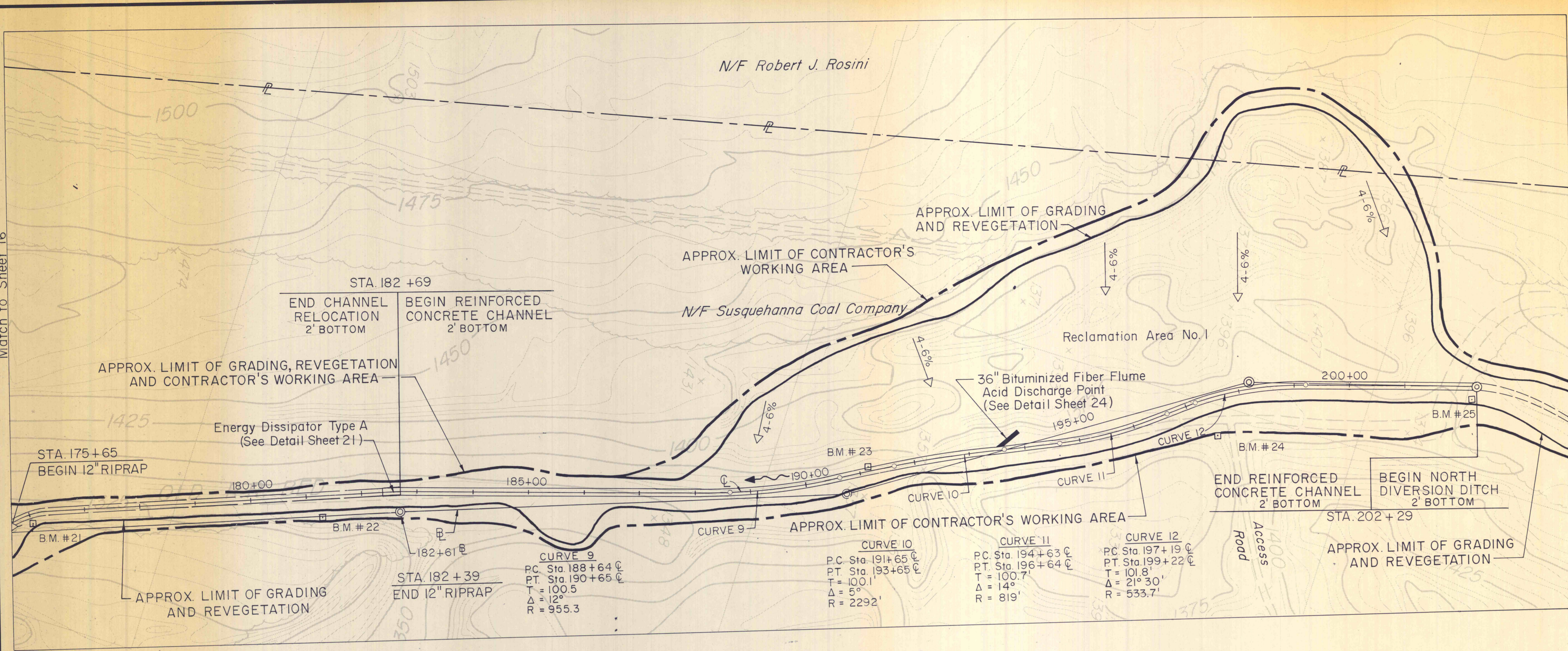
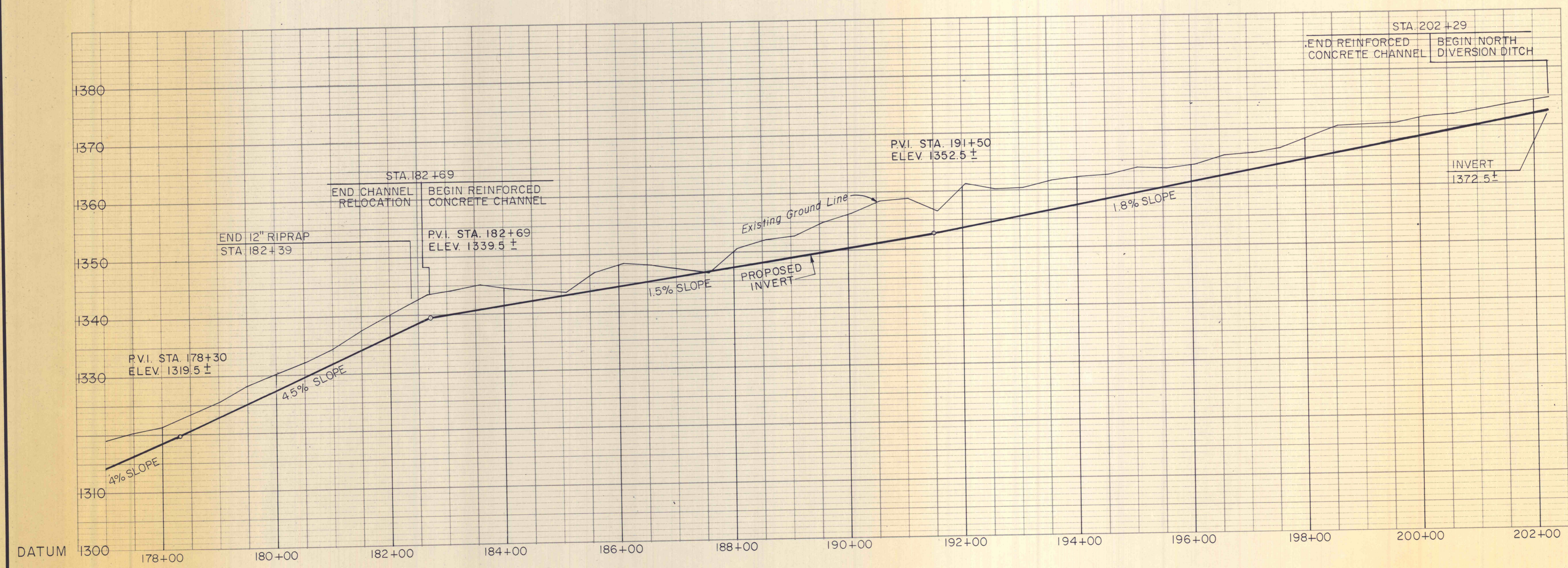


Match to Sheet 16



- Match to Sheet 19
- B.M. # 21 Elevation 1319.07
Spike & Washers in top of 5" Birch Stump
 - B.M. # 22 Elevation 1345.99
Spike & Washers in top of 3" Birch Stump
 - B.M. # 23 Elevation 1361.71
Spike & Washers in top of 6" Aspen Stump
 - B.M. # 24 Elevation 1365.99
X-Cut in top of bolt in Concrete Post
 - B.M. # 25 Elevation 1379.88
X-Cut on Metal Bar in Concrete Foundation



MAIN CHANNEL

NO	DATE	REVISION	APPR
SUBMITTED <i>Richard B. Ulp</i>			
APPROVED <i>Robert A. Rosini</i>			
APPROVED <i>Richard B. Ulp</i>			

COMMONWEALTH OF PENNSYLVANIA
 DEPARTMENT OF ENVIRONMENTAL RESOURCES
 OFFICE OF RESOURCES MANAGEMENT
PROJECT NO. SL 113-5-1
MINE DRAINAGE POLLUTION ABATEMENT
COAL RUN
SHAMOKIN CREEK WATERSHED
NORTHUMBERLAND COUNTY, PA.
 ERDMAN, ANTHONY, ASSOCIATES
 Consulting Engineers
 Camp Hill, Pa. Rochester, N.Y.

PLAN & PROFILE

DRAWN BY GMS	DATE 5-9-75	DRAWING NO. 18 of 28
CHECKED BY DHC	SCALE 1"=10' VERT. 1"=100' HOR.	