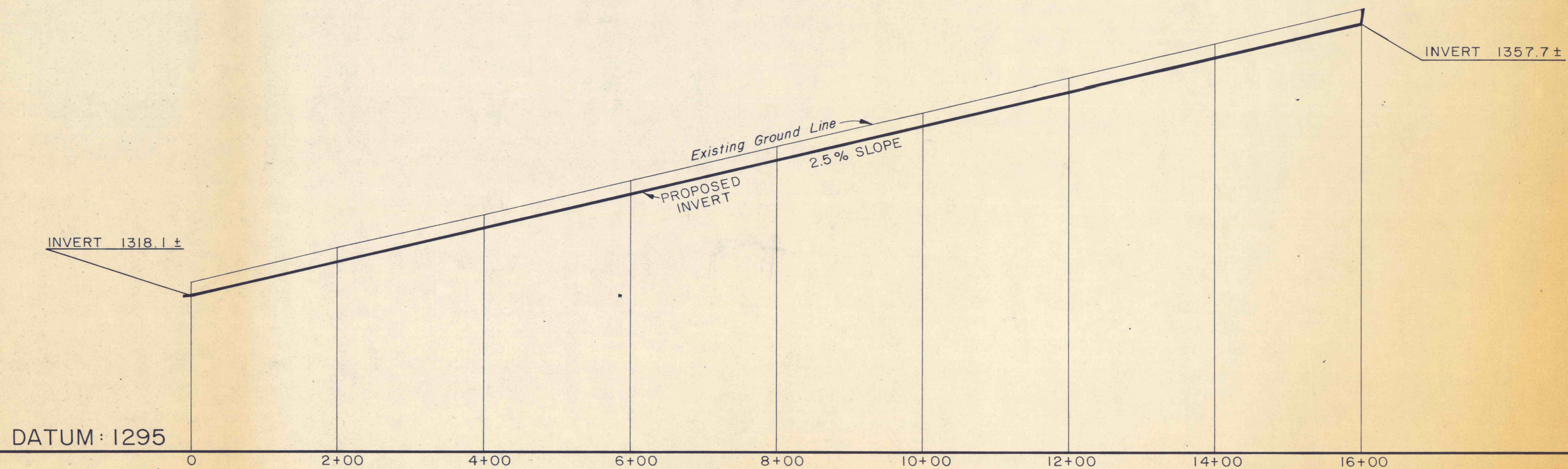


NORTHEAST DIVERSION DITCH OF WEST FLUME



NORTHWEST DIVERSION DITCH OF WEST FLUME

NO	DATE	REVISION	APPR.
SUBMITTED			
PROFESSIONAL			
APPROVED			
CHIEF - DIVISION OF MINE RECLAMATION			
APPROVED			
DIRECTOR - BUREAU OF DESIGN			
COMMONWEALTH OF PENNSYLVANIA DEPARTMENT OF ENVIRONMENTAL RESOURCES OFFICE OF RESOURCES MANAGEMENT			
<b>PROJECT NO. SL 113-5-1</b>			
MINE DRAINAGE POLLUTION ABATEMENT COAL RUN SHAMOKIN CREEK WATERSHED NORTHUMBERLAND COUNTY, PA.			
<b>ERDMAN, ANTHONY, ASSOCIATES</b> Consulting Engineers Camp Hill, Pa. Rochester, N.Y.			
<b>PROFILES</b>			
DRAWN BY	DATE	DRAWING NO.	
GMS	5-9-75	8 of 28	
CHECKED BY	SCALE 1" = 10' VERT		
DHC	1" = 100' HOR.		