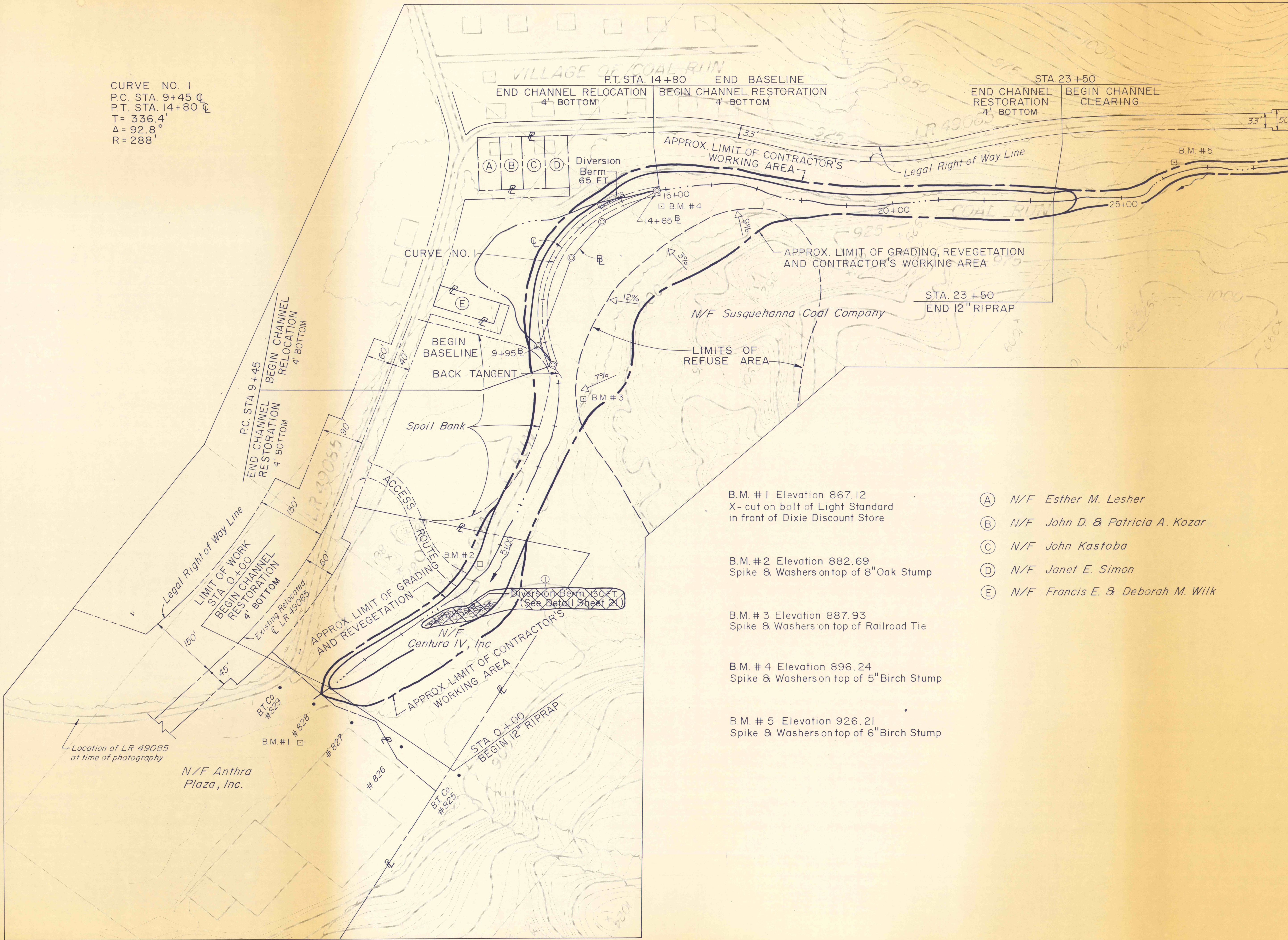


Match to Sheet 4

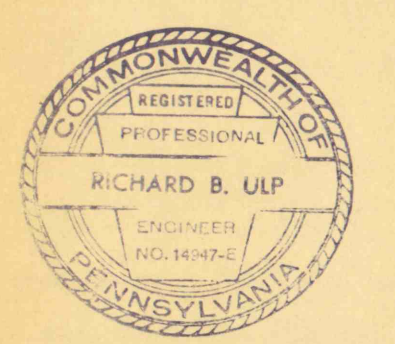
CURVE NO. 1
 P.C. STA. 9+45 C
 P.T. STA. 14+80 C
 T = 336.4'
 Δ = 92.8°
 R = 288'



- B.M. #1 Elevation 867.12
X-cut on bolt of Light Standard
in front of Dixie Discount Store
- B.M. #2 Elevation 882.69
Spike & Washers on top of 8" Oak Stump
- B.M. #3 Elevation 887.93
Spike & Washers on top of Railroad Tie
- B.M. #4 Elevation 896.24
Spike & Washers on top of 5" Birch Stump
- B.M. #5 Elevation 926.21
Spike & Washers on top of 6" Birch Stump

- (A) N/F Esther M. Leshar
- (B) N/F John D. & Patricia A. Kozar
- (C) N/F John Kastoba
- (D) N/F Janet E. Simon
- (E) N/F Francis E. & Deborah M. Wilk

NO	DATE	REVISION	APPR
①	6-30-75	Removed Diversion Berm - Sta. 3+00±	RFZ
SUBMITTED			
APPROVED			
APPROVED			



COMMONWEALTH OF PENNSYLVANIA
 DEPARTMENT OF ENVIRONMENTAL RESOURCES
 OFFICE OF RESOURCES MANAGEMENT

PROJECT NO. SL 113-5-1

MINE DRAINAGE POLLUTION ABATEMENT
 COAL RUN
 SHAMOKIN CREEK WATERSHED
 NORTHUMBERLAND COUNTY, PA.

ERDMAN, ANTHONY, ASSOCIATES
 Consulting Engineers
 Camp Hill, Pa. Rochester, N.Y.

PLAN

DRAWN BY	DATE	DRAWING NO.
GMS	5-9-75	3 of 28
CHECKED BY	SCALE	
DHC	1" = 100'	