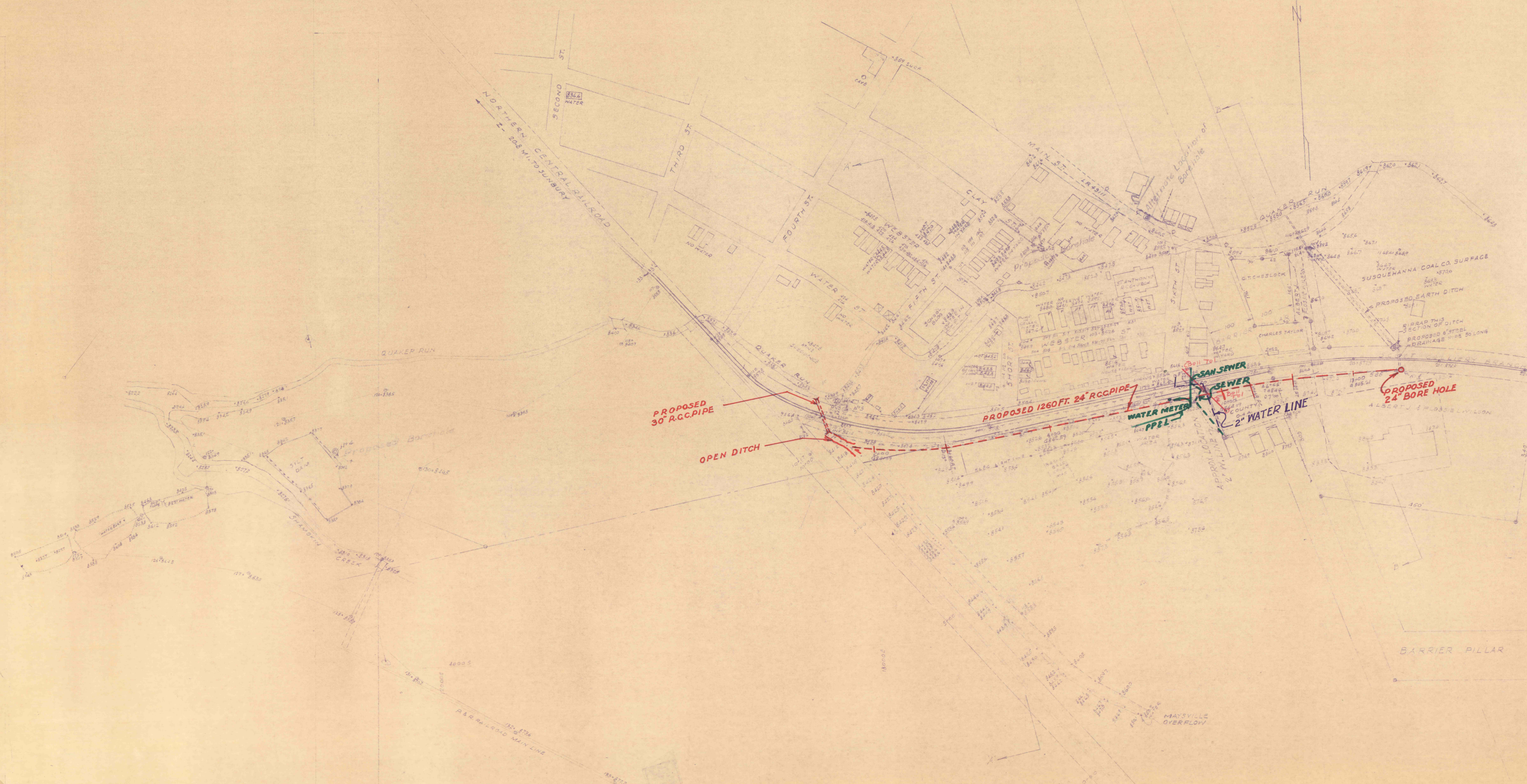


← TO SHAMOKIN PA. STATE HWY RTE 62 TO KULPMONT →



PROPOSED 30\"/>

OPEN DITCH

PROPOSED 1260 FT. 24\"/>

WATER METER

SEWER

2\"/>

PROPOSED 24\"/>

BARRIER PILLAR

PENNSYLVANIA DEPARTMENT OF MINES AND
 MINERAL INDUSTRIES
 MAP SHOWING LOCATION OF
 NEW WATER DRAINAGE FACILITIES
 SANDHAM MINE BRASSARD MOUNTAIN
 PROJECT NO. A-10 - PHASE NO.
 COAL TOWNHIP, EUSUBURGERLAND COUNTY
 JANUARY, 1967 SCALE 1" = 100'