

NOTE
 BOLD CONTOURS INDICATE
 REVISIONS TO ORIGINAL
 MAPPING TO REFLECT
 EXISTING TOPOGRAPHY

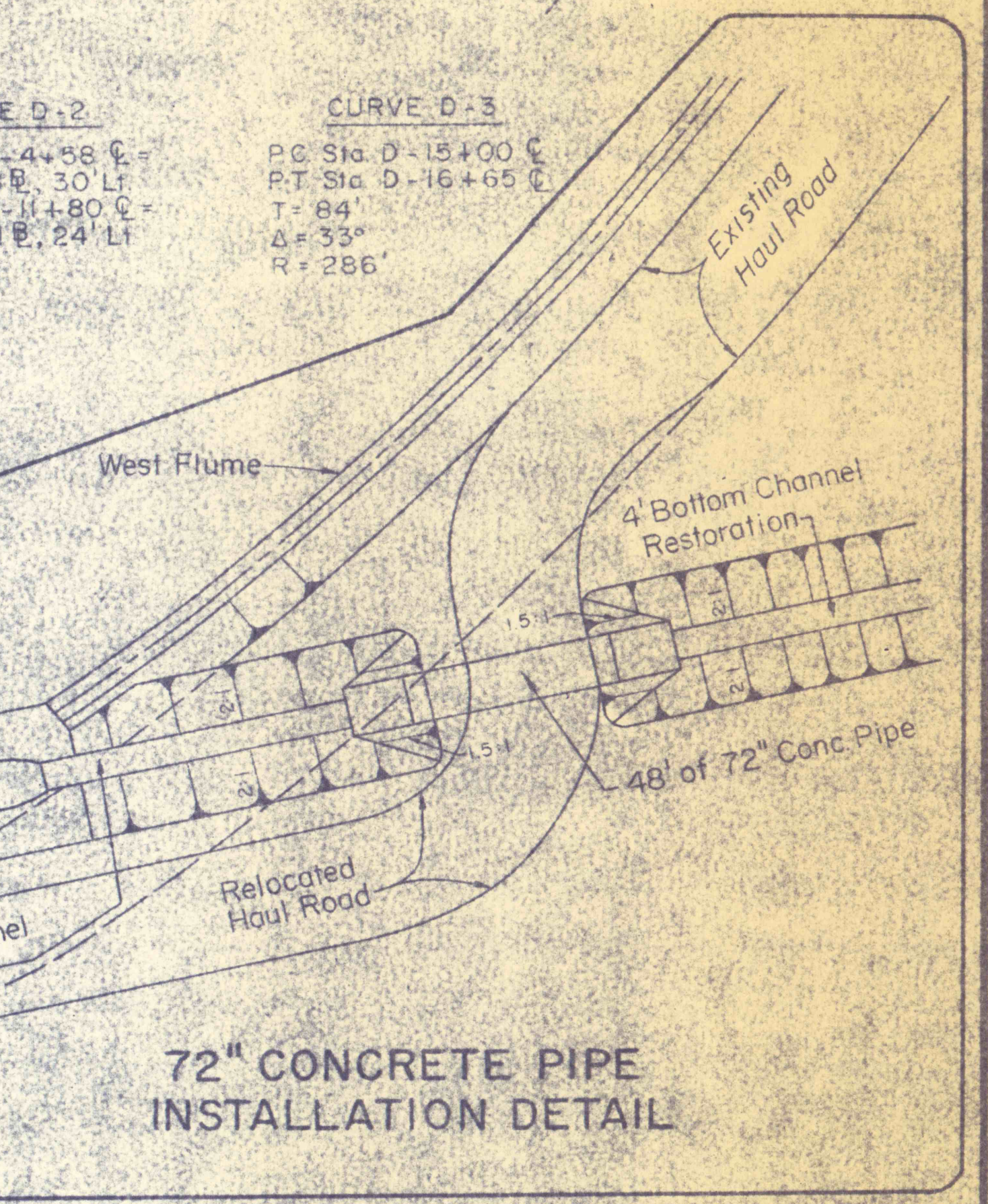
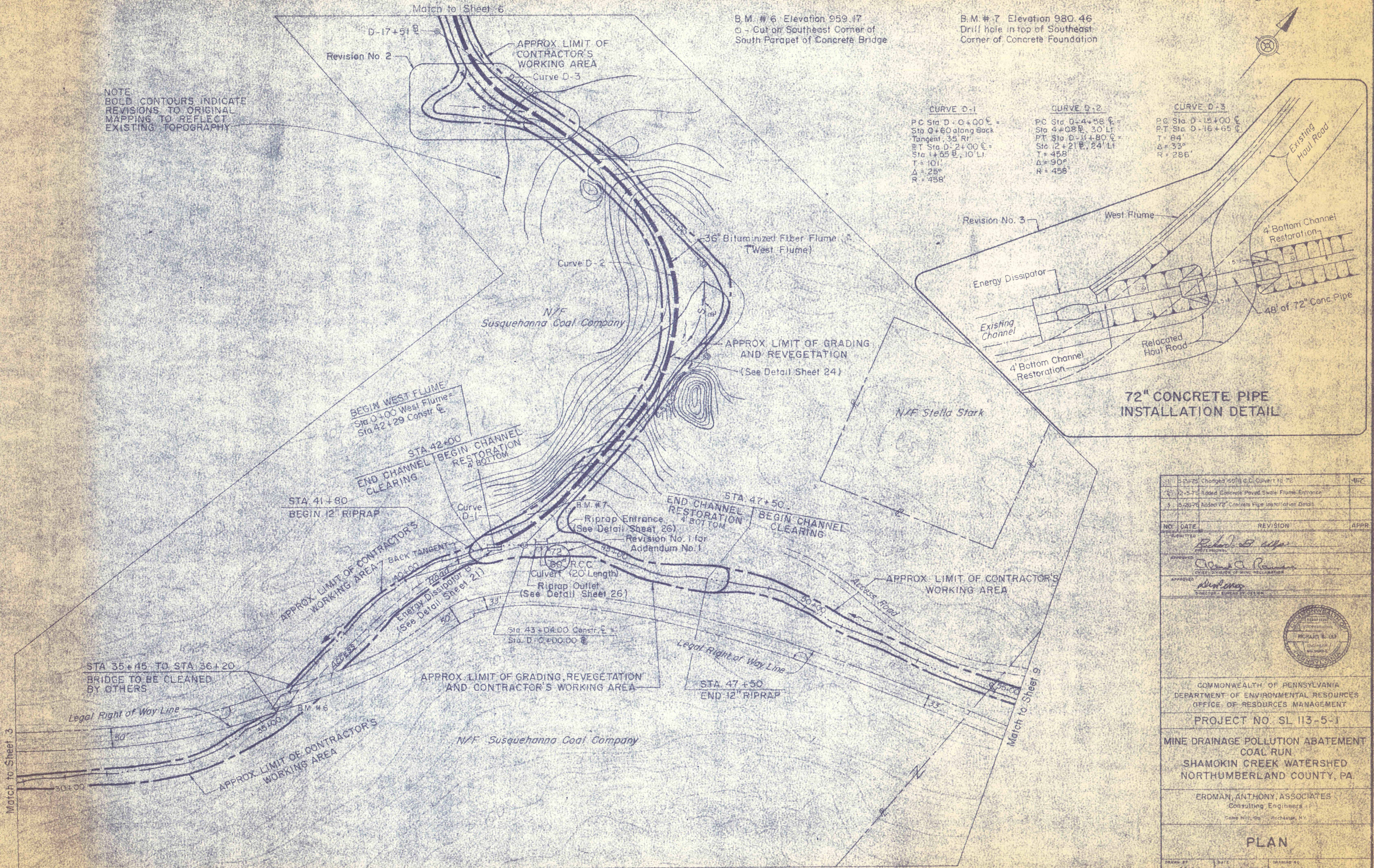
B.M. #6 Elevation 959.17
 □ - Cut off Southeast Corner of
 South Parapet of Concrete Bridge

B.M. #7 Elevation 980.46
 □ - Drill hole in top of Southeast
 Corner of Concrete Foundation

CURVE D-1
 PC Sta D-0+00 C =
 Sta 0+60 along Back
 Tangent 35' R
 PT Sta D-2+00 C =
 Sta 1+65 E, 10' L
 T = 101'
 Δ = 25°
 R = 458'

CURVE D-2
 PC Sta D-4+56 C =
 Sta 4+08 E, 30' L
 PT Sta D-11+80 C =
 Sta 12+21 E, 24' L
 T = 458'
 Δ = 90°
 R = 458'

CURVE D-3
 PC Sta D-15+00 C =
 PT Sta D-16+65 C =
 T = 84'
 Δ = 33°
 R = 286'



1	5-23-75	Changed 50" C.C. Culvert to 72"	-MFC
2	7-5-75	Added Concrete Paved Swale Flume Entrance	
3	10-26-75	Added 72" Concrete Pipe Installation Detail	

NO.	DATE	REVISION	APPR.

APPROVED: *Richard E. Giff*
 PROFESSIONAL ENGINEER

APPROVED: *James A. Ransom*
 CHIEF, DIVISION OF MINE RECLAMATION

APPROVED: *Walter J. ...*
 DIRECTOR, BUREAU OF DESIGN

COMMONWEALTH OF PENNSYLVANIA
 DEPARTMENT OF ENVIRONMENTAL RESOURCES
 OFFICE OF RESOURCES MANAGEMENT

PROJECT NO. SL 113-5-1

MINE DRAINAGE POLLUTION ABATEMENT
 COAL RUN
 SHAMOKIN CREEK WATERSHED
 NORTHUMBERLAND COUNTY, PA.

ERDMAN, ANTHONY, ASSOCIATES
 Consulting Engineers
 One Mill Hill, Rockledge, N.Y.

PLAN

DRAWN BY	DATE	DRAWING NO.
GMS	5-9-75	
CHECKED BY	SCALE	
DHC	1" = 100'	4 of 28