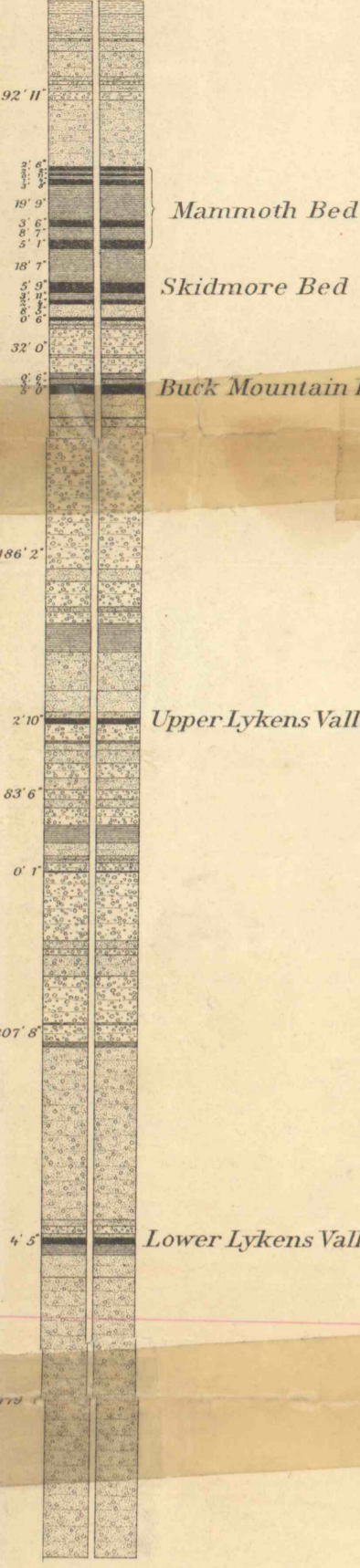
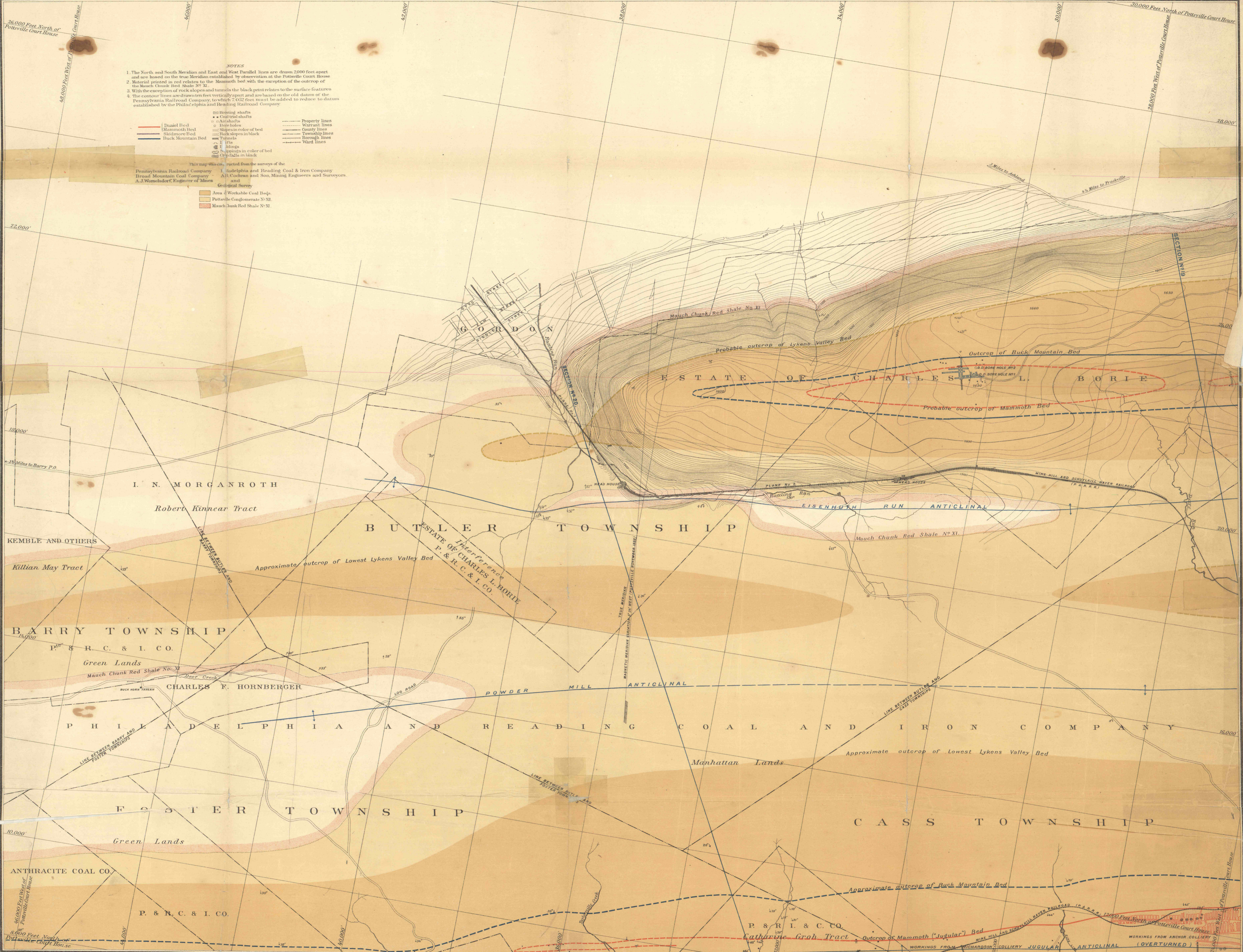


SECTION OF COAL MEASURES
GORDON SHEET
BORE HOLE No. 2
2600' NORTH EAST OF HEAD
OF GORDON PLANE No. 2

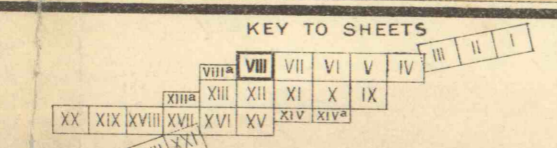


- NOTES**
1. The North and South Meridian and East and West Parallel lines are drawn 2000 feet apart and are based on the true Meridian established by observation at the Pottsville Court House.
 2. Material printed in red relates to the Mammoth bed with the exception of the outcrop of the Mauch Chunk Red Shale No. XI.
 3. With the exception of rock slopes and tunnels the black print relates to the surface features.
 4. The contour lines are drawn from feet vertically apart and are based on the old datum of the Pennsylvania Railroad Company, to which 7.622 feet must be added, to reduce to datum established by the Philadelphia and Reading Railroad Company.

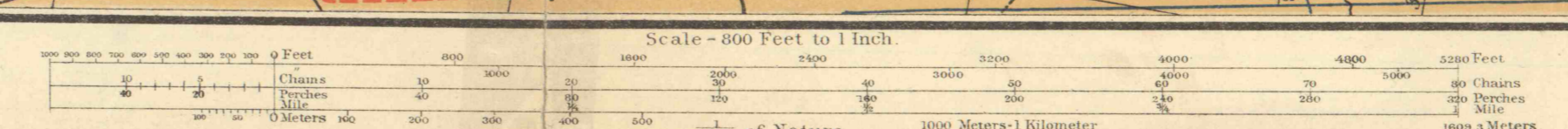
- This map was constructed from the surveys of the Pennsylvania Railroad Company, the Philadelphia and Reading Coal & Iron Company, Broad Mountain Coal Company, A.B. Cochran and Son, Mining Engineers and Surveyors, and A.J. Womelsdorf, Engineer of Mines and Geological Survey.
- Area of Workable Coal Beds
 - Pottsville Conglomerate No. XII
 - Mauch Chunk Red Shale No. XI



EDWARD E. RAEBERCHER
CHARLES JONES
EDWIN M. KEATLEY
LEONARD SCHREY
C. FRANK SHAW
HOWELL ALTHOUSE
Assistants



JULIUS BIEN & CO. LITH



E.K. MEYERS STATE PRINTER

Head House Plane No. 1. 3.50 Miles North of Pottsville Court House
Latitude of Pottsville Court House 40° 51' 36" West
Longitude 76° 51' 10.6" east of Washington