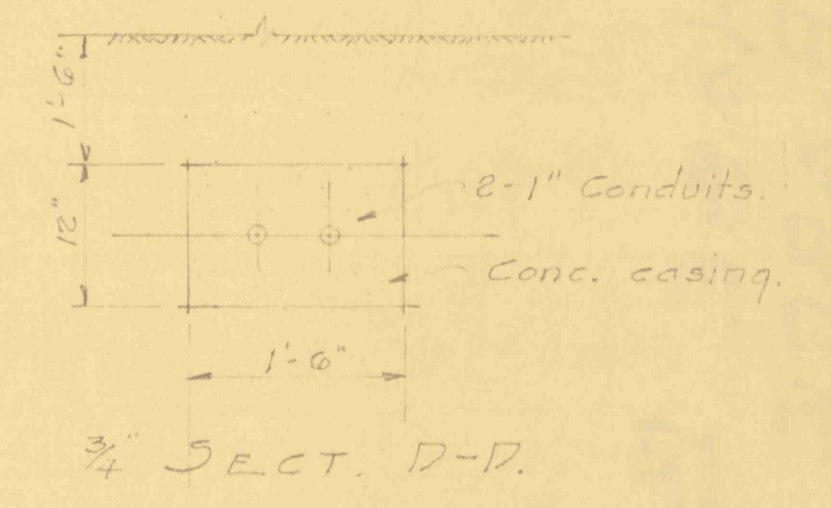
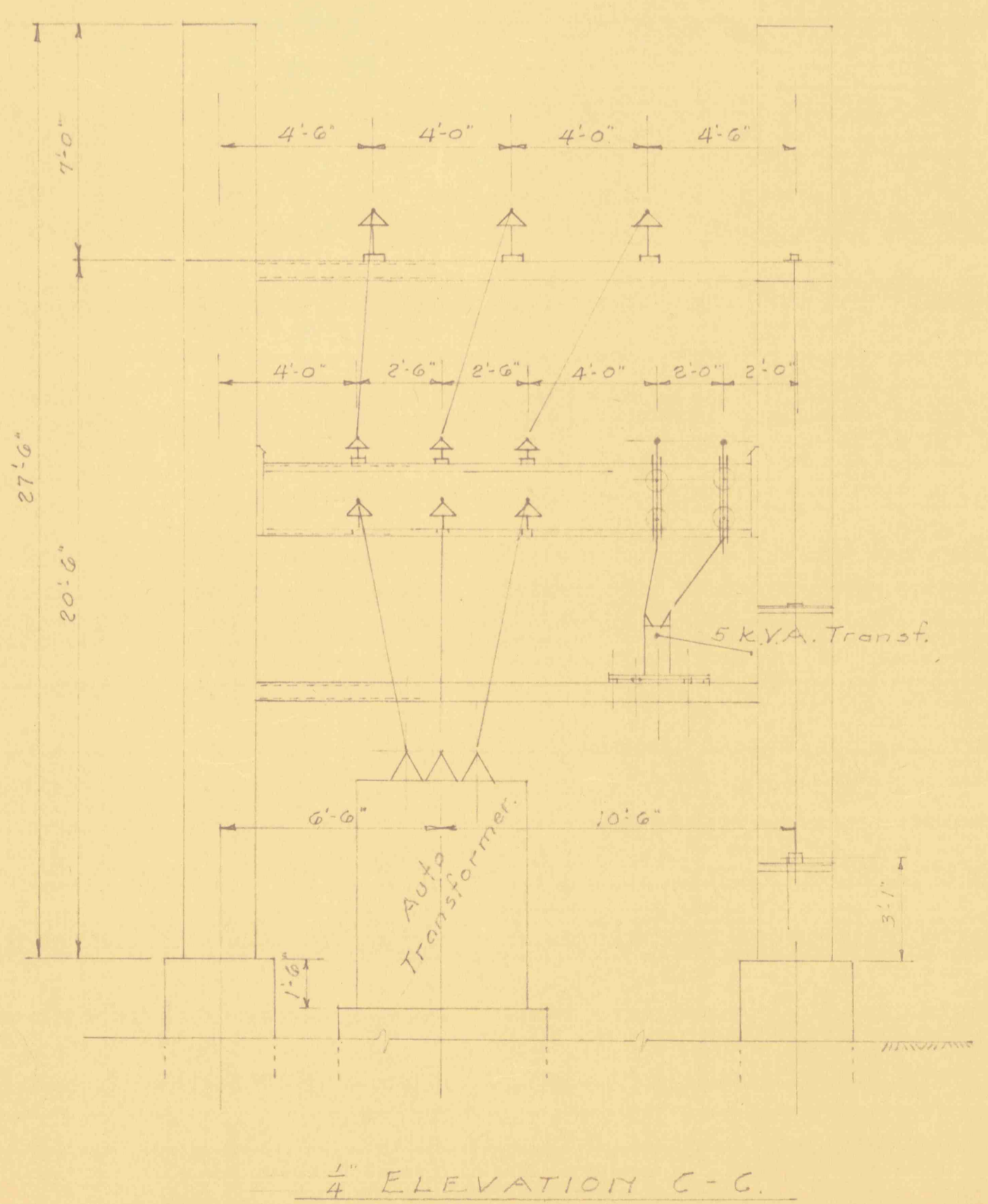
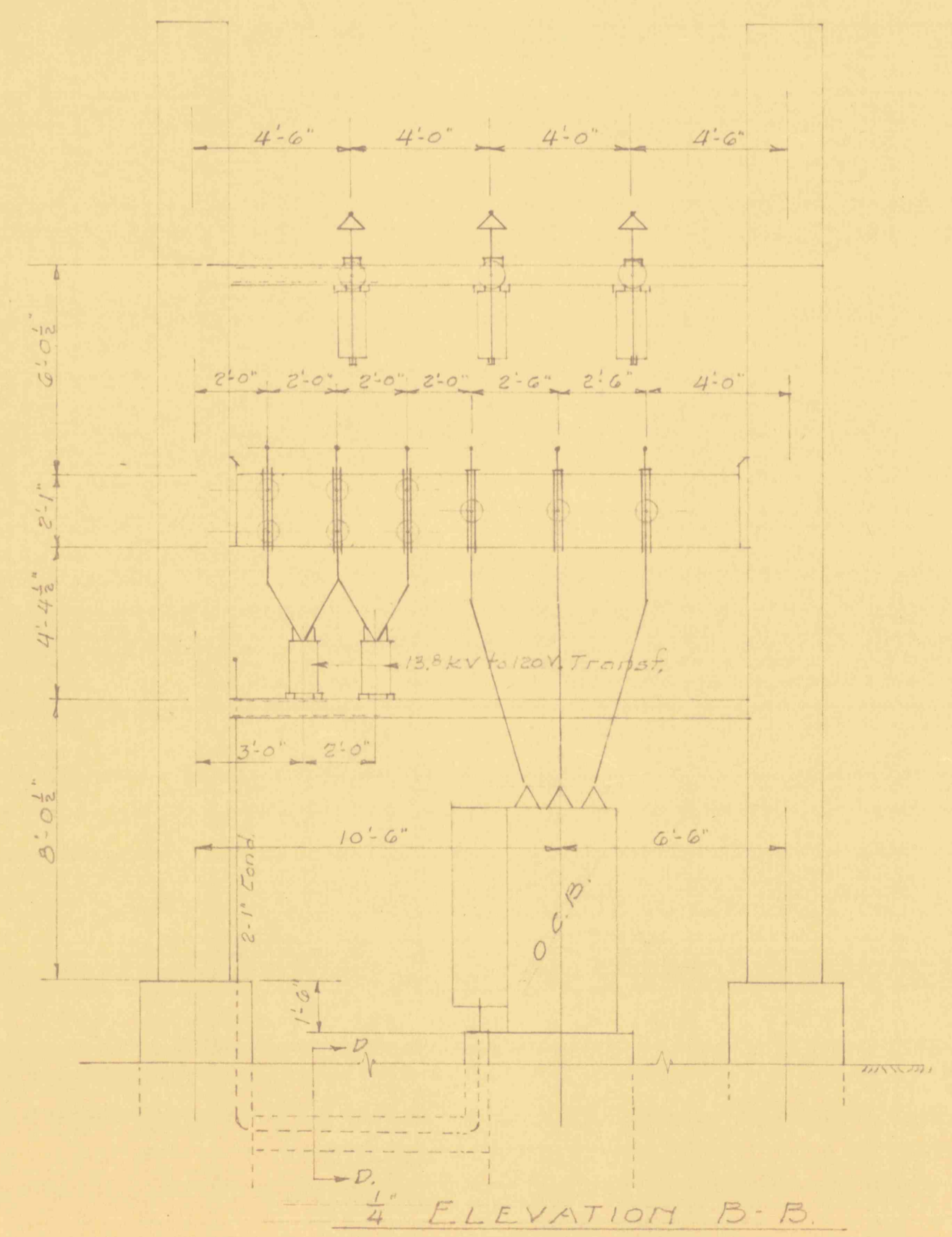
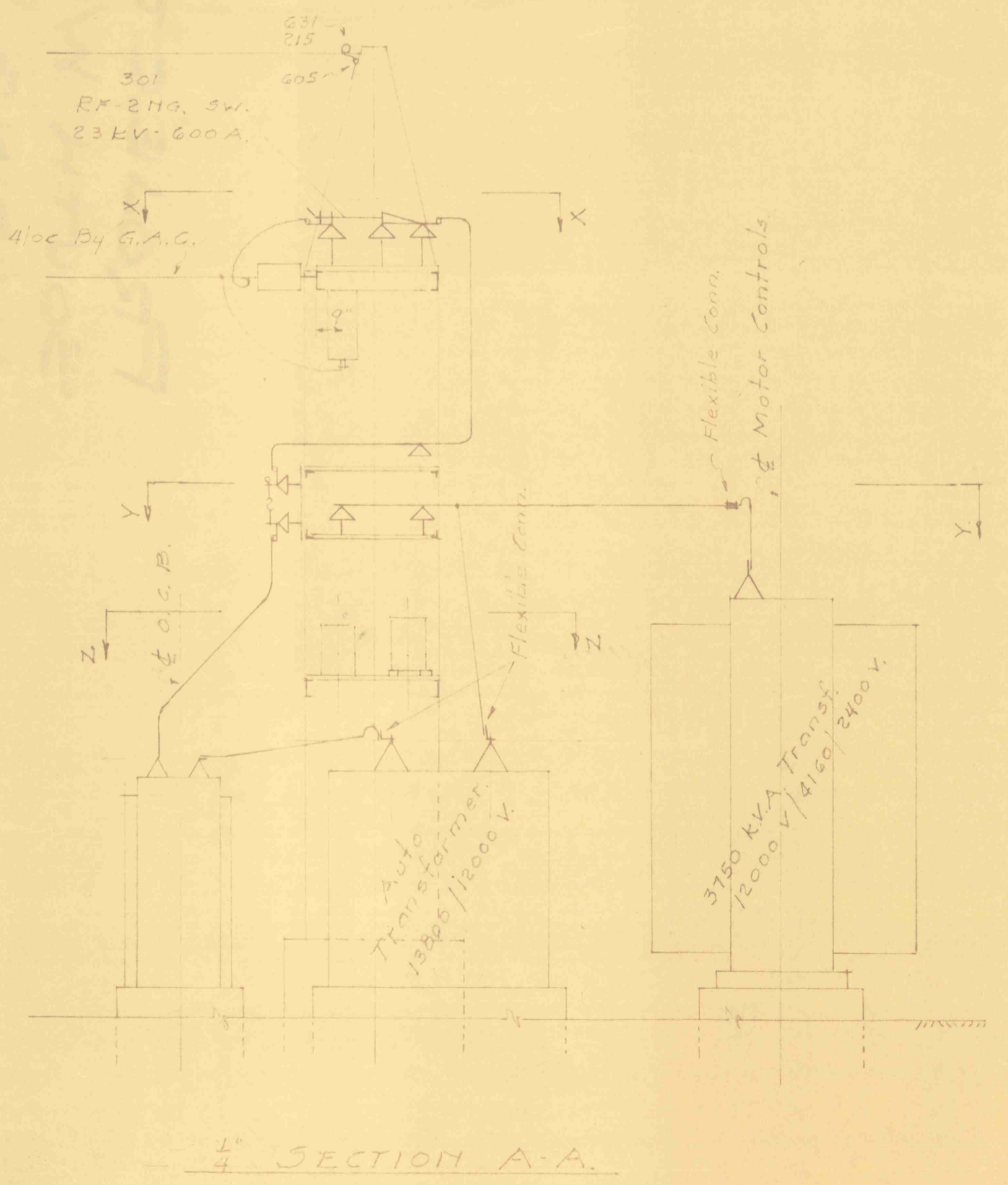
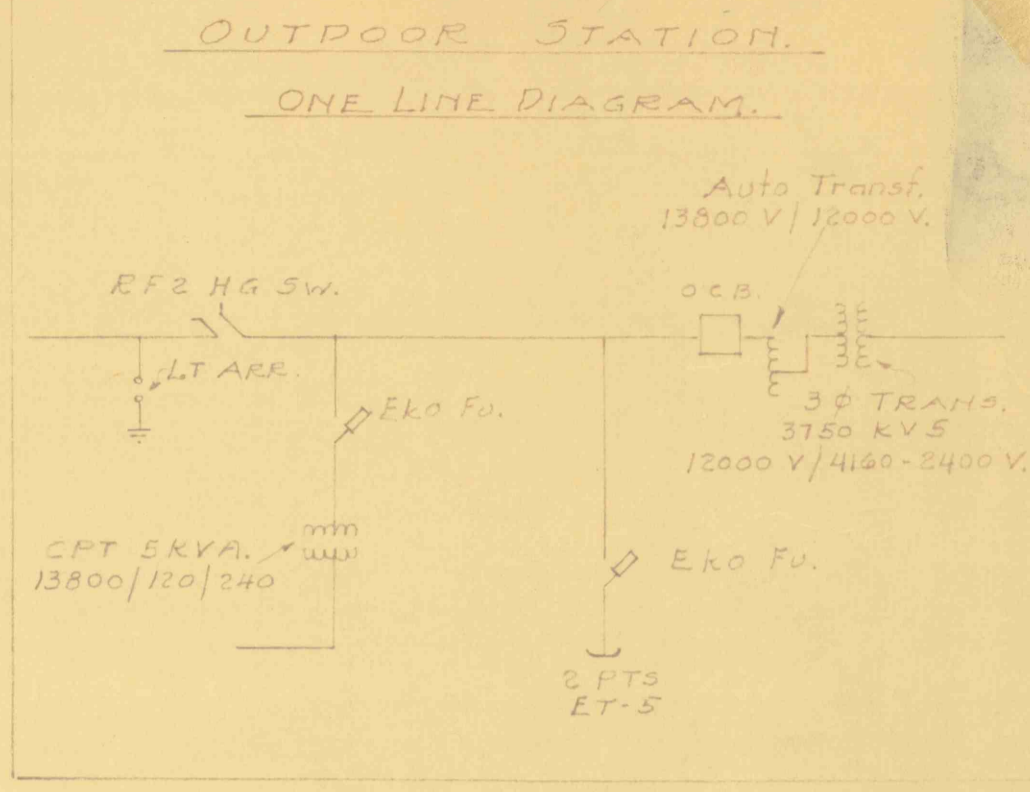
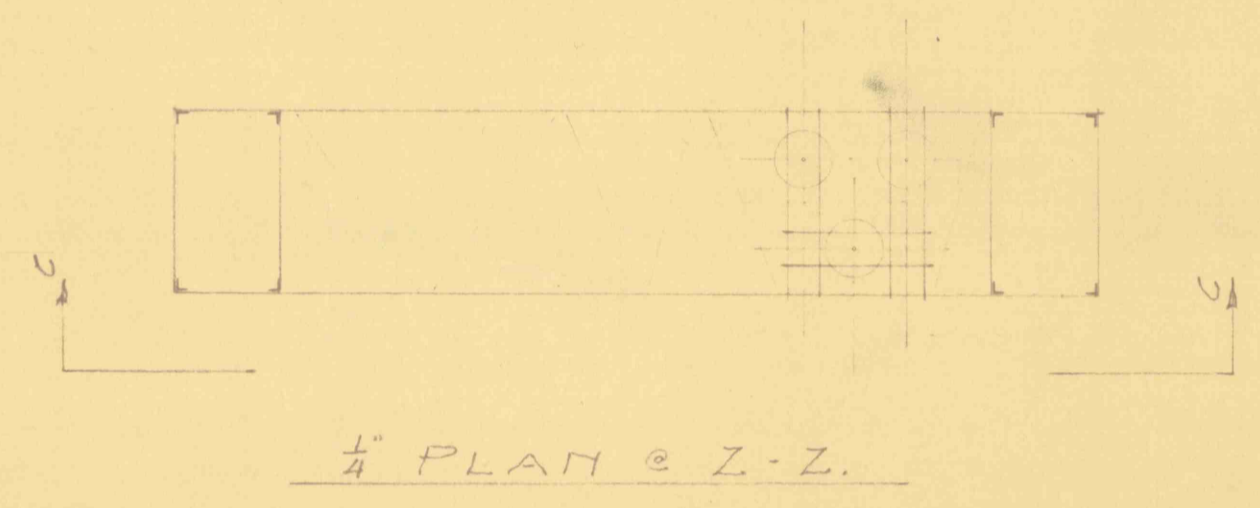
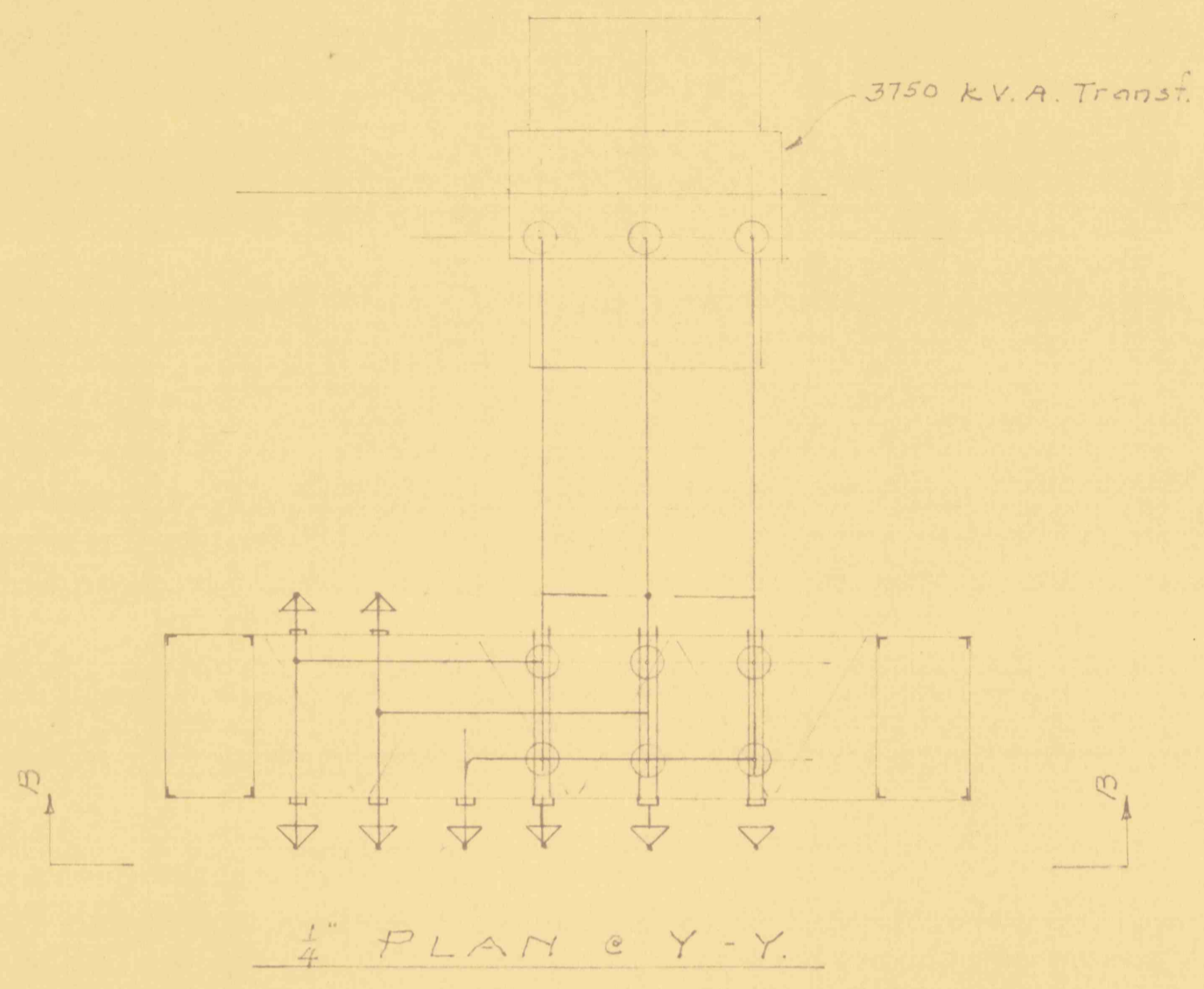


f & Motor controls.



For original outdoor sub-station see General Electric dwg. 0344 D0115.

WIRING FOR
OUTDOOR SUBSTA

50, WILKES-BARRE #5 COND. ...
FLOOD CONTROL PROJ #26, PH ...
PA. DEPT. OF MINES & MINERAL INDUSTRIES

GLEN ALDEN CORPORATION Wilkes-Barre, Pa.
CONSTRUCTION ENGINEERS

SCALE: As noted.

APPROVED	DRAWN BY G.W.C. 1-27-61
Const. Engr. C.W.C. 4/17/61	TRACED BY
	CHECKED BY
	S 2597

Rev. 2-6-61 G.W.C. Chg. 100 kVA to 13.8 kv to 120 v. transf.