

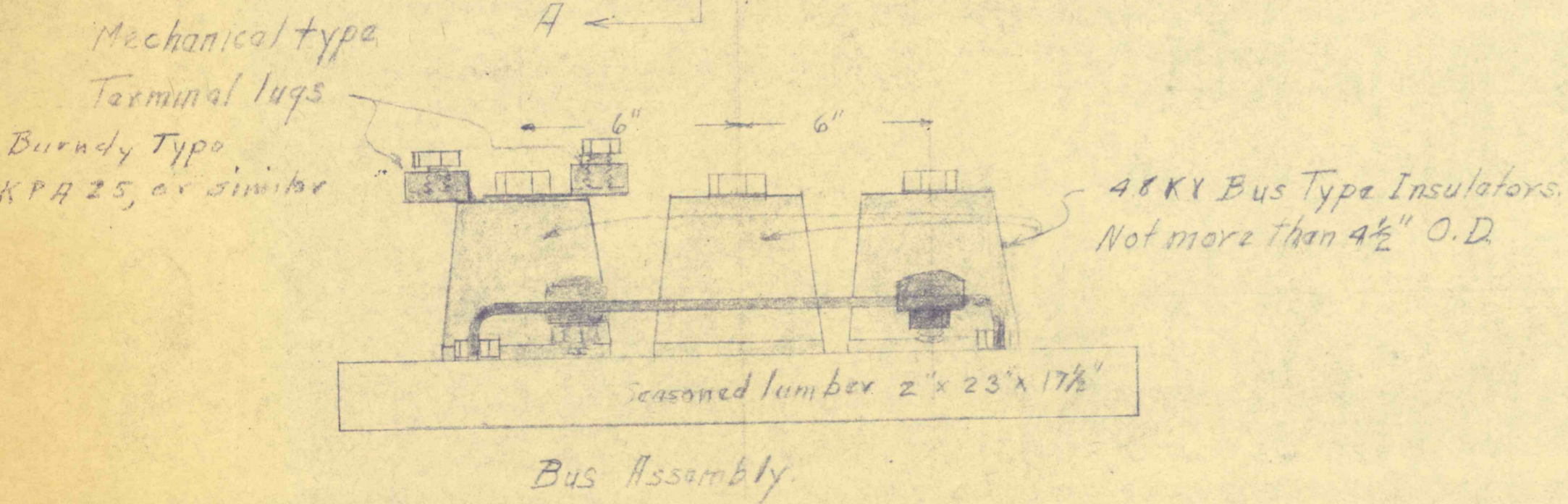
Base for Insulators.  
2" x 23" x 17 1/2"  
Seasoned lumber.

Make hole oversize to accommodate piece of rubber jacket over cable.

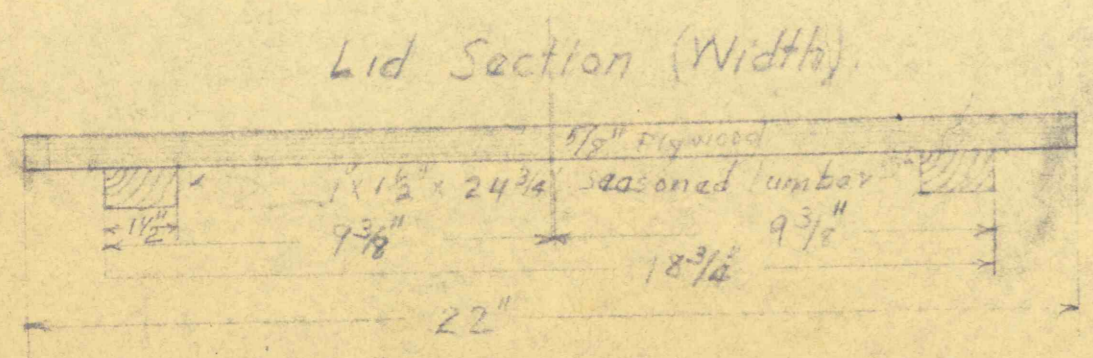
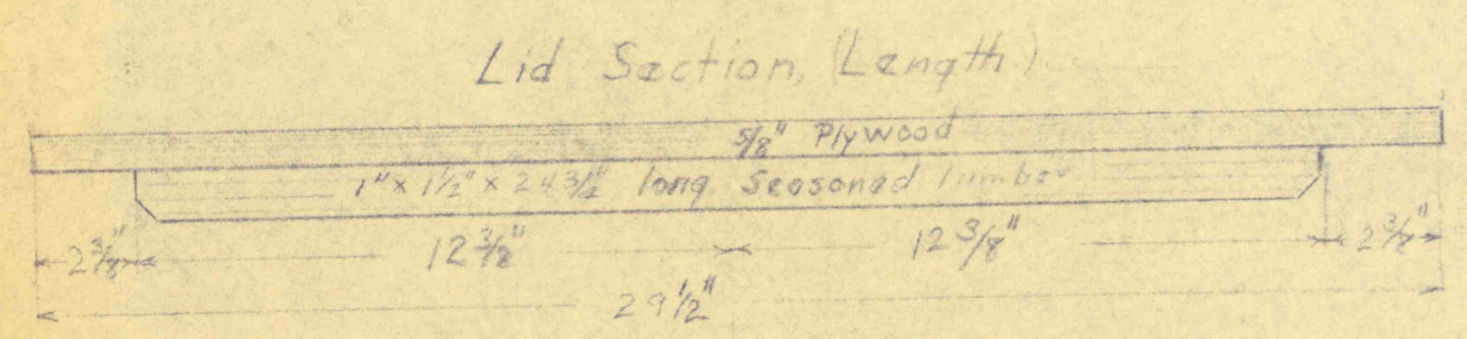
"Cover to be kept locked at all times."

Section A-A

Body of Sectionalizer to be made of 5/8" exterior plywood.



Bus Assembly



A suggestion!  
Cable Sectionalizer  
For Trailing Cable of  
Strip-Mining Equipment.  
Department of Mines.  
Wilkes Barre, Pa. 12/15/62