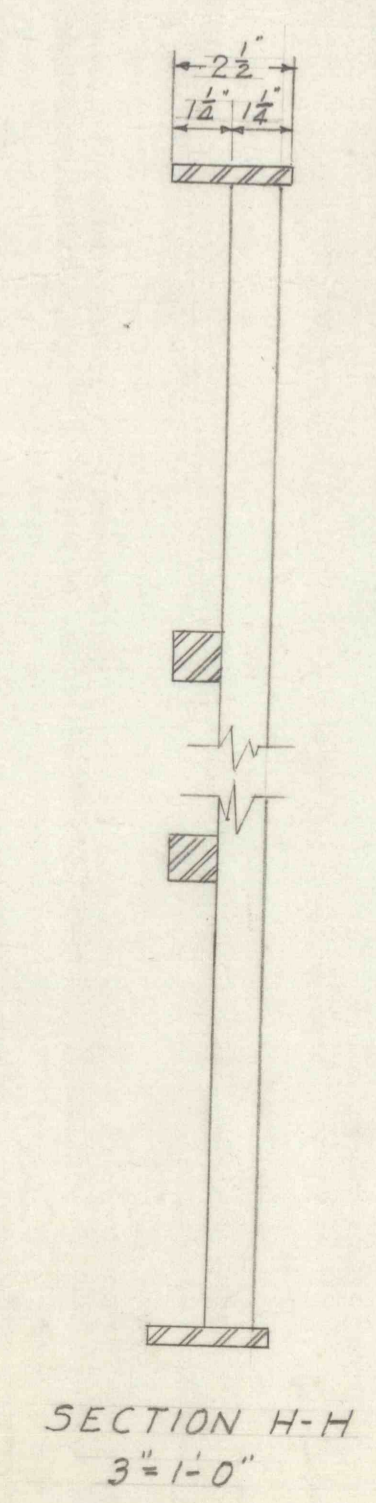
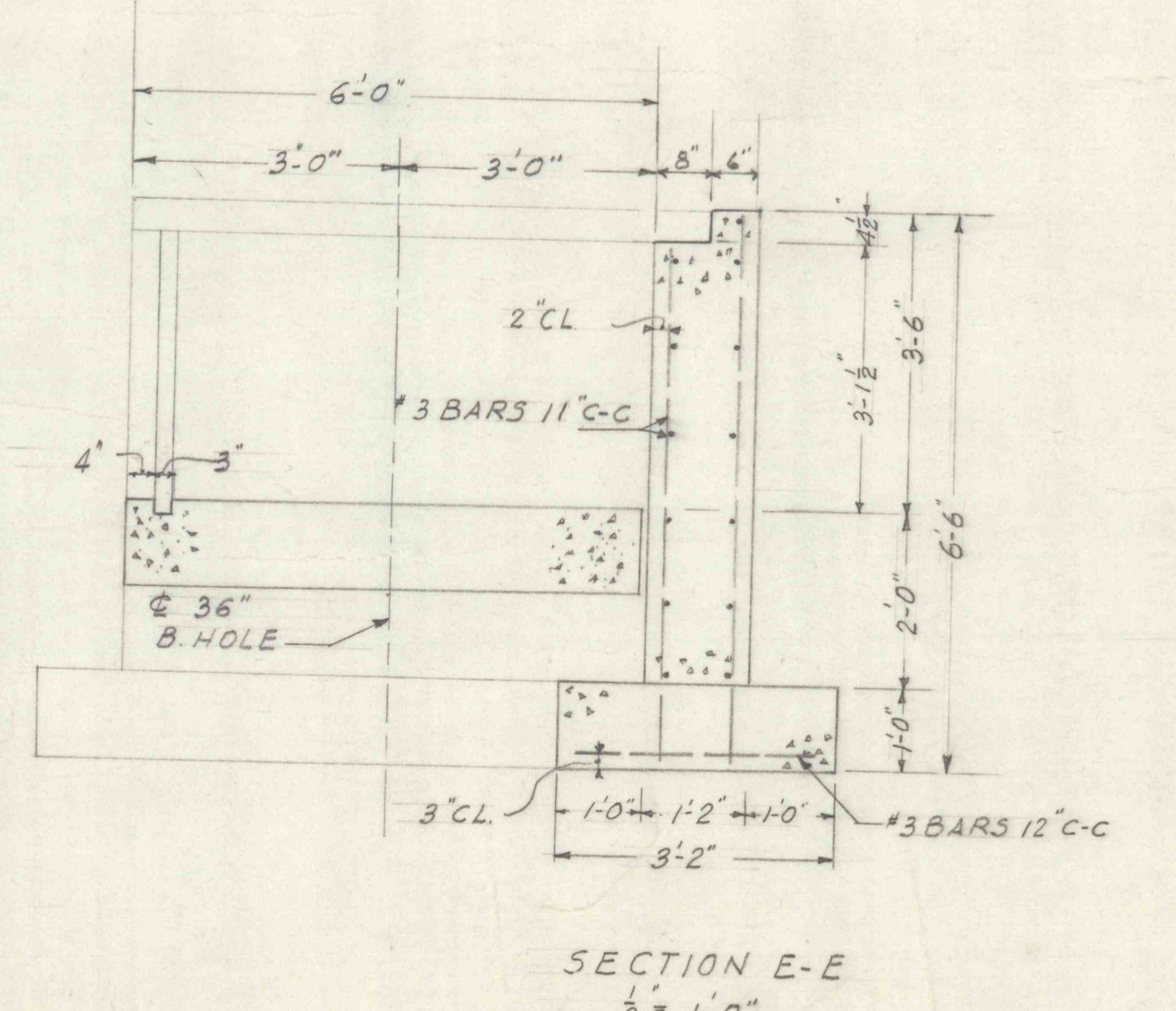
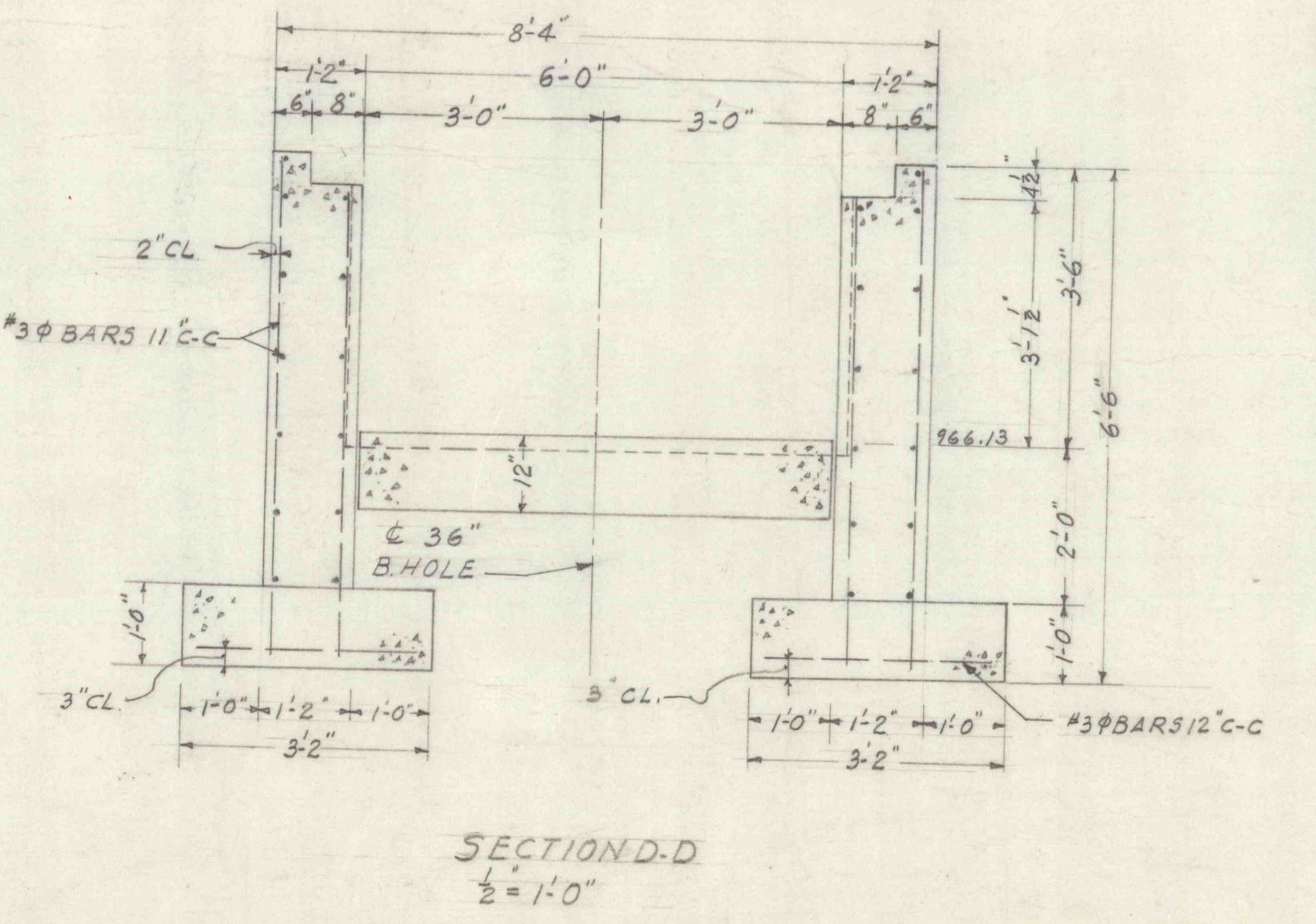
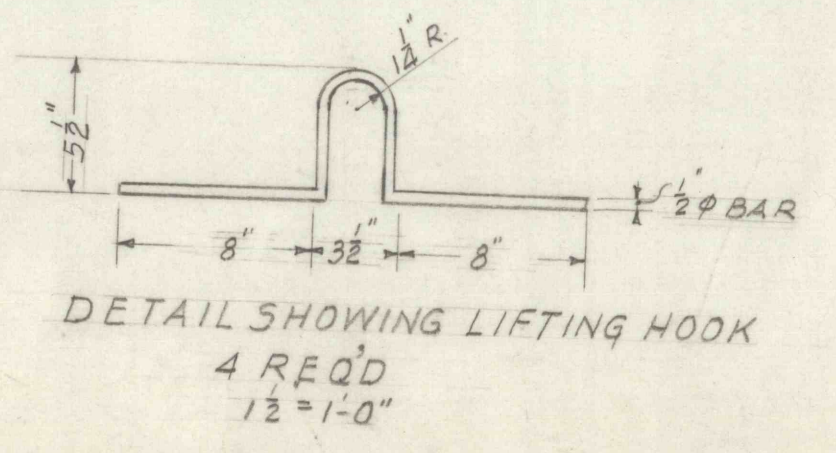
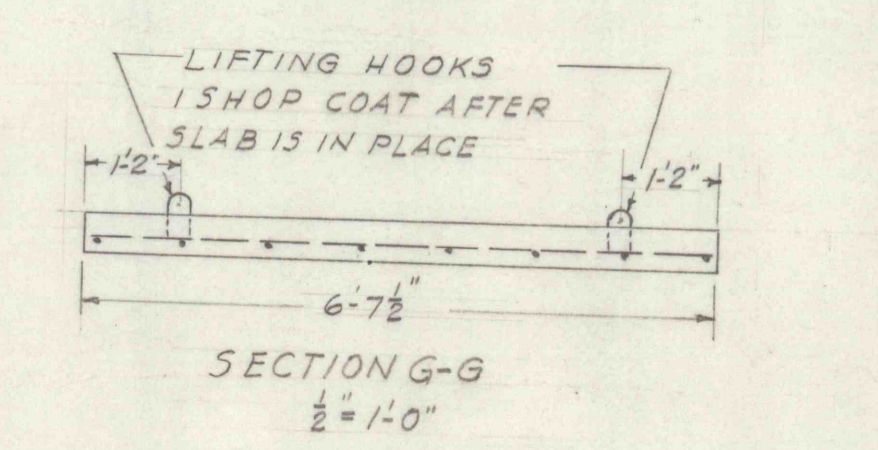
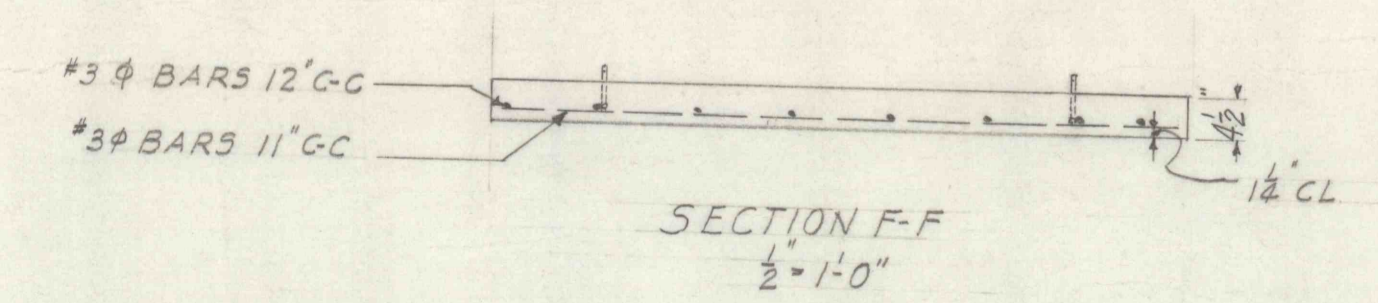
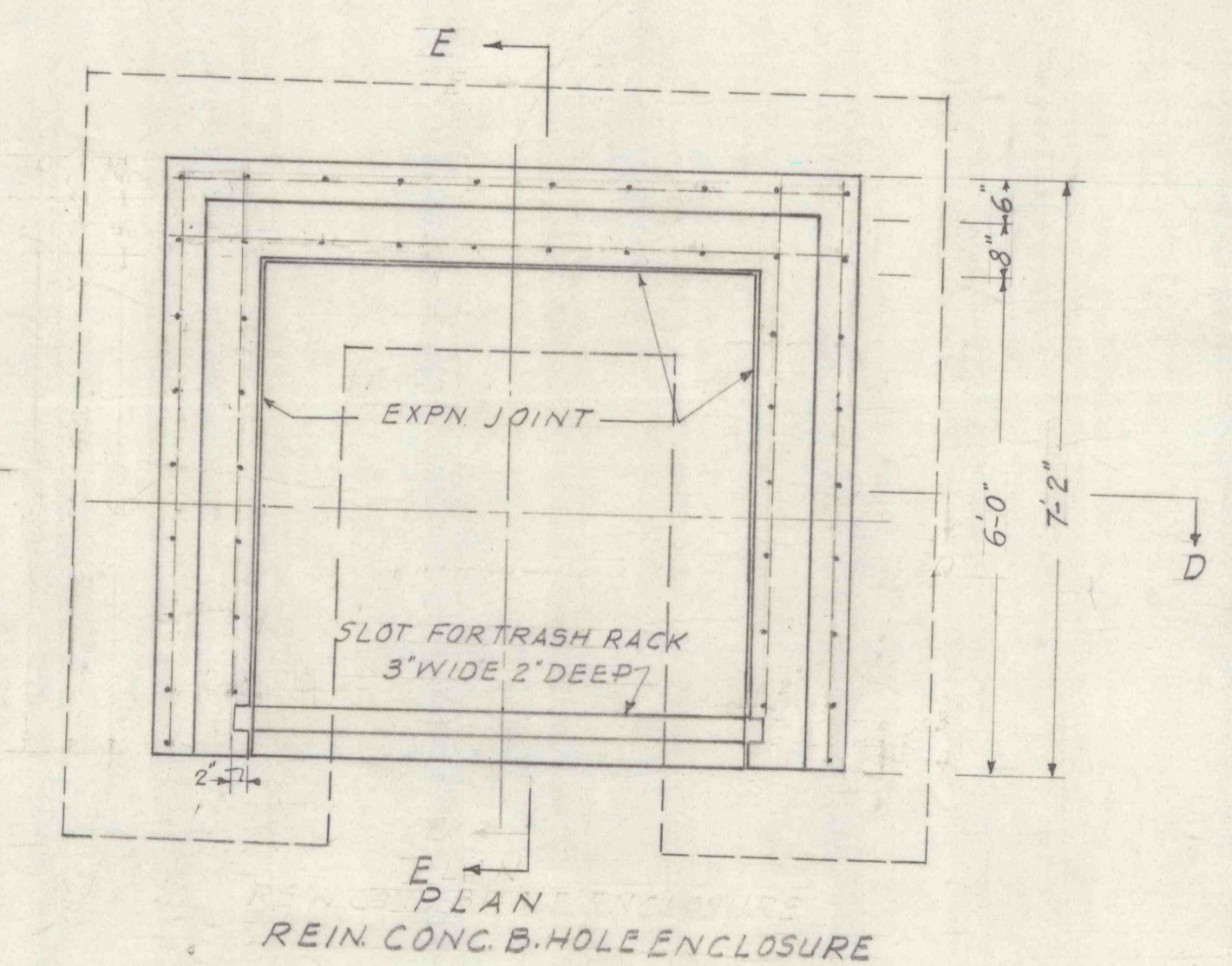
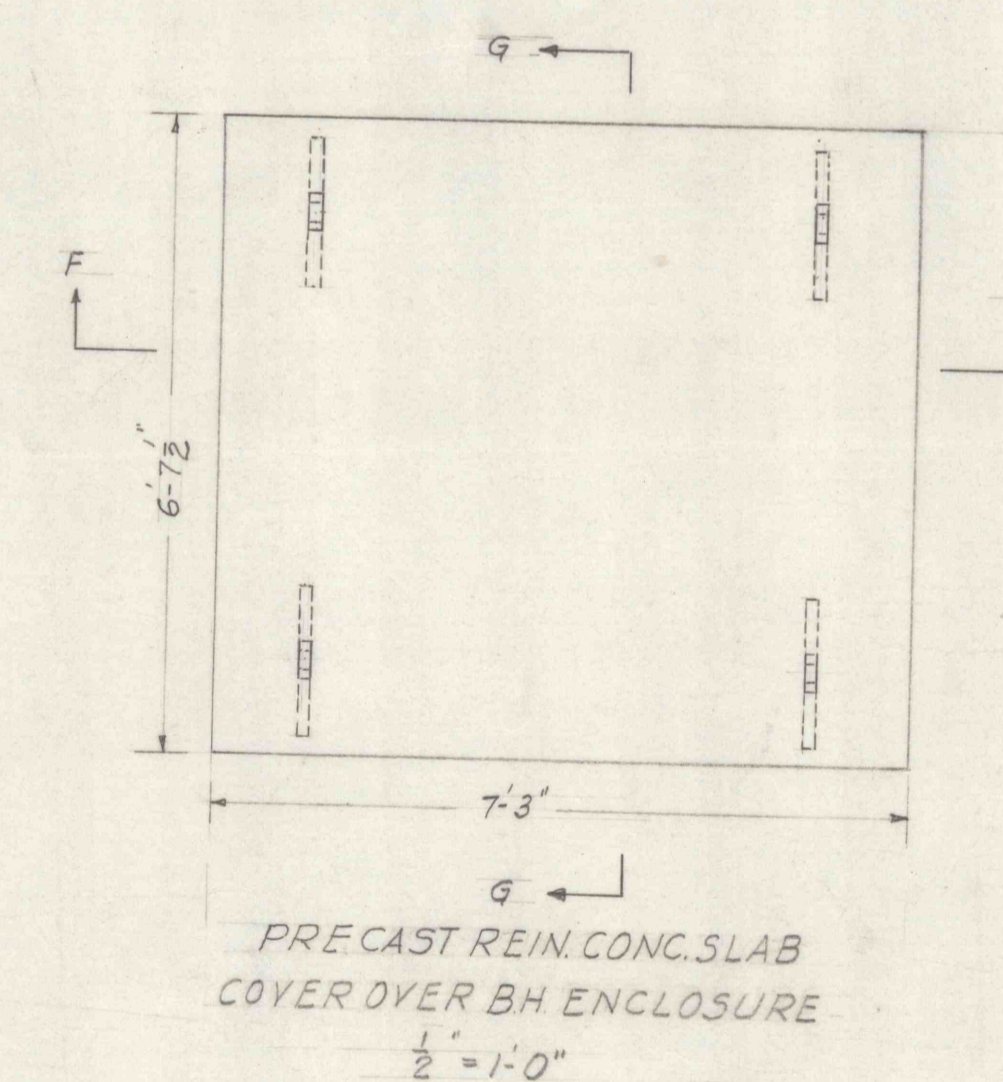
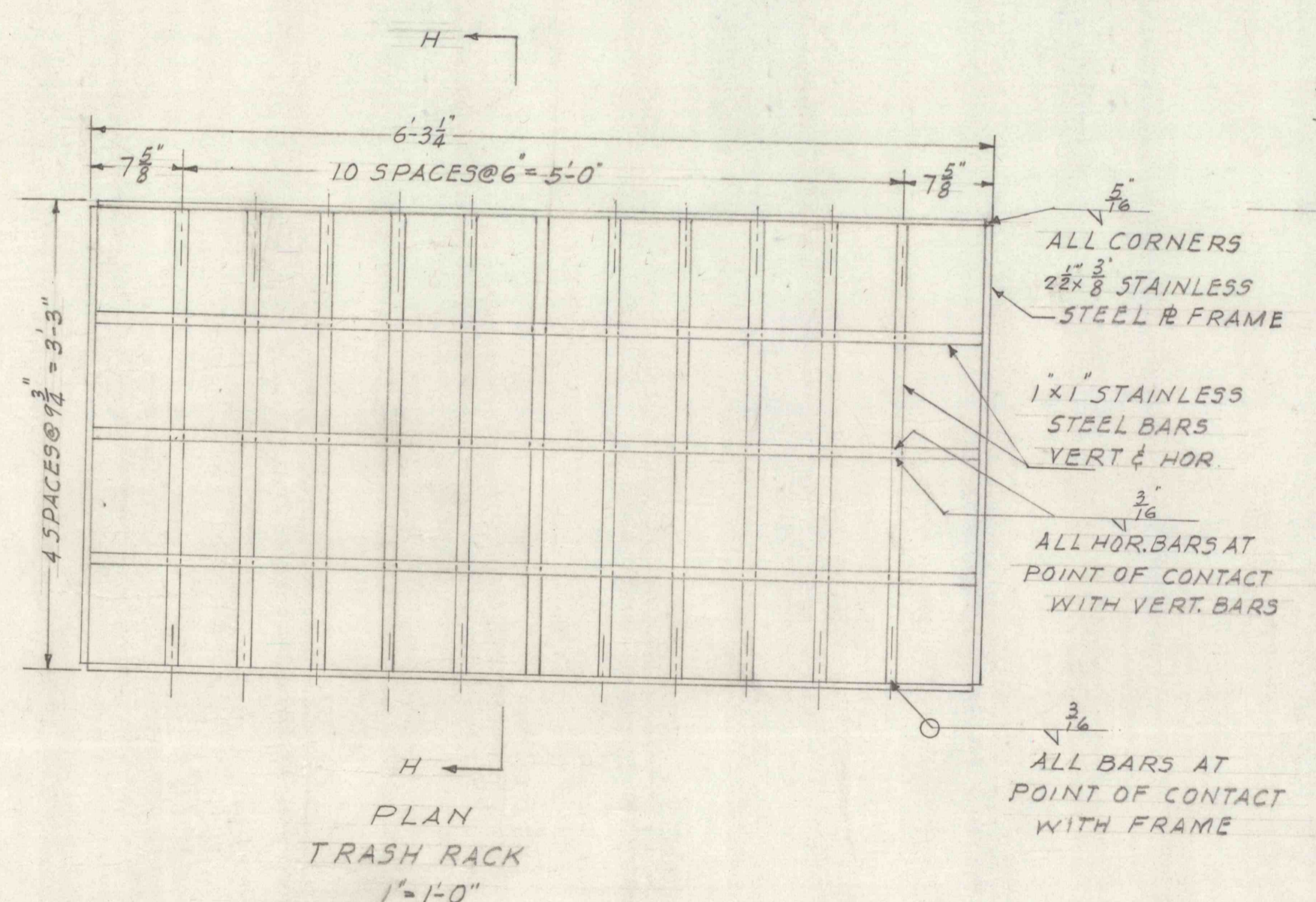
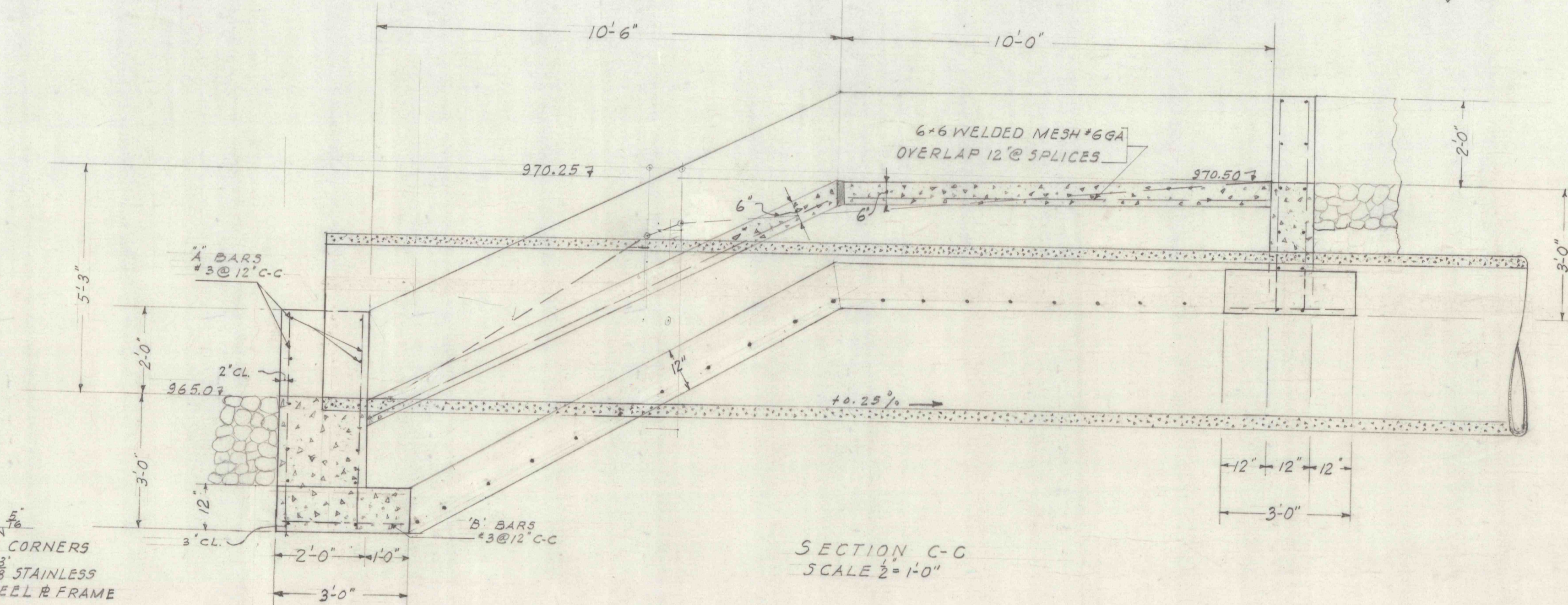


- NOTES:
1. CONCRETE CONSTRUCTION SHALL BE DONE IN ACCORDANCE WITH GOOD CONSTRUCTION PRACTICES AND SHALL CONFORM WITH REQUIREMENTS AS SET FORTH IN THE AMERICAN CONCRETE INSTITUTE PUBLICATION "BUILDING CODE REQUIREMENTS FOR REINFORCED CONCRETE" ACI 318-56
 2. CONCRETE SHALL BE PLACED ONLY IN THE PRESENCE OF A DULY AUTHORIZED INSPECTOR
 3. REINFORCEMENT BARS SHALL CONFORM TO ASTM DESIGNATION A-15 AND A-305 DEFORMED, INTERMEDIATE GRADE
 4. LOCATION OF REINFORCEMENT SPLICES WILL BE DETERMINED BY THE CONTRACTOR, SUBJECT TO THE APPROVAL OF THE ENGINEER AND SHALL OVERLAP 24 BAR DIAMETERS OR A MINIMUM OF 12 INCHES
 5. ALL REINFORCEMENT SHALL BE 2" CLEAR, EXCEPT WHERE NOTED
 6. CHAMFER ALL EXPOSED EDGES AND HORIZONTAL JOINTS IN WALL
 7. UNFORMED SURFACES WILL HAVE A LIGHT TROWEL FINISH
 8. FORMED SURFACES PERMANENTLY EXPOSED SHALL HAVE FINES AND IRREGULARITIES REMOVED AND CORRECTED, AND TIE ROD HOLES SHALL BE PROPERLY FILLED
 9. CONCRETE SHALL HAVE A 28 DAY STRENGTH OF 3000 PSI.



PENNSYLVANIA DEPARTMENT OF MINES AND MINERAL INDUSTRIES
 PLAN AND SECTIONS SHOWING CONCRETE STRUCTURES AND STAINLESS STEEL TRASH RACK
 HAMMOND MINE DRAINAGE BOREHOLE
 PROJECT NO. A-21
 BUTLER TOWNSHIP, SCHUYLKILL COUNTY
 NOV. 1968
 SCALE AS SHOWN