

| DISTRICT | COUNTY     | ROUTE | SECTION | SHEET     |
|----------|------------|-------|---------|-----------|
| 5-0      | SCHUYLKILL | 1005  | 53      | 67 of 142 |

| REQUIRED LIST  |   |
|--|---|
| NORTHBOUND   |   |
| 161  | Sta. 505+50<br>16000 C.Y. CL 1 Exc. - Expose Mine Void<br>16050 C.Y. Emb. Bfill, Rock<br>See Special Requirements<br>See Details on Sheet 4                 |
| 108  | Sta. 506+00<br>164 L.F. 18" ACC.M. Pipe, Fully Coated *<br>1 C.Y. CL 2 Conc. Type D-E Edw. Rt.<br>120 C.Y. CL 2 Exc. - Pipe & Edw.                          |
| 701  | Sta. 506+00 to Sta. 511+90 RT.<br>C.Y. CL 2 Exc. - Parallel Ditch<br>24" bottom   |
|  | Sta. 508+10 Rt.<br>4 C.Y. CL 2 Exc. - Remove Exist. Pipe<br>4 C.Y. Emb. Bfill   |
|  | Sta. 508+45 Rt.<br>4 C.Y. CL 2 Exc. - Remove Exist. Pipe<br>4 C.Y. Emb. Bfill   |
|  | Sta. 509+75 to Sta. 513+25<br>Rock Emb. for Base of<br>Rdway. Emb.<br>See X-Sections  |
| 191  | Sta. 512+00<br>192 L.F. 24" ACC.M. Pipe, Fully Coated<br>12 Ga. *   |
| 063  | 14 C.Y. CL 2 Conc. Type D-E Edw. - Rt.  |
| 164  | 175 C.Y. CL 2 Exc. - Pipe & Edw.<br>3 C.Y. CL 2 Exc. - Outlet Ditch<br>Max. Fill over Pipe 32'  |
| 2270   | Sta. 512+00 to Sta. 532+75 RT.<br>C.Y. CL 2 Exc. - Parallel Ditch<br>24" bottom   |
| Contd on sheet 68  |   |
| SOUTHBOUND   |   |
| 288  | Sta. 485+25 to Sta. 489+30 Lt.<br>C.Y. Emb. - Fill Pocket.<br>See X-Sections  |
| 520  | Sta. 485+40<br>10550 C.Y. CL 1 Exc. - Expose Mine Void<br>10600 C.Y. Emb. Bfill, Rock<br>See Special Requirements<br>See Detail on Sheet 4                  |
| 269  | Sta. 486+25 to Sta. 489+30 Lt.<br>707 C.Y. CL 2 Exc. - Parallel Ditch<br>24" bottom   |
|  | Sta. 486+50<br>176 L.F. 42" ACC.M. Pipe, Fully Coated,<br>10 Ga. Elong. *   |
|  | 25 C.Y. CL 2 Conc. Type D-W Edw. Lt. & Rt.<br>16 C.Y. CL 2 Exc. - Pipe & Edwis.<br>16 C.Y. CL 2 Exc. - Inlet & Outlet<br>Ditches<br>Max. Fill over Pipe 30' |
|  | Sta. 488+20 to Sta. 492+25 RT.<br>388 C.Y. CL 2 Exc. - Parallel Ditch<br>24" bottom   |
| 114  | Sta. 488+80 Lt.<br>115 C.Y. CL 2 Exc. - Remove Exist. Pipes<br>& Edwis.   |
| 114  | 115 C.Y. Emb. Bfill   |
| Contd on sheet 69  |   |
| ** See detail on Sheet 10<br>* See fabrication on sheet 13                   |   |
| Books:<br>Line & Topo 16661, 16662<br>X-Sections 16699, 16683<br>Misc. 16654 |   |

Survey & RIW Data (Chord Def.)  
 @ Northbound  
 P.I. 505+56.04  
 Δ 39° 57' 54" Lt.  
 D 3° 00'  
 T 694.55'  
 L 1332.17'  
 R 1910.08'

B.M. - □ Cut on corner Conc. Wing Wall  
 at Culvert with 2 Conc. Pipes  
 130° Lt. Sta. 489+00 @ Southbound Survey  
 Elev. 1005.704

Spiral & Construction Data  
 Dc = 3° 00'  
 Ts = 844.52  
 Ls = 300'  
 p = 1.96'

Start Spiral Sta. 497+11.52  
 Offset 0.98' Lt. Sta. 498+61.49 & Sta. 511+93.66  
 Offset 1.96' Lt. Sta. 500+11.52 & Sta. 510+43.63  
 Stop Spiral Sta. 513+43.63  
 Superelevate 1/8" per ft.

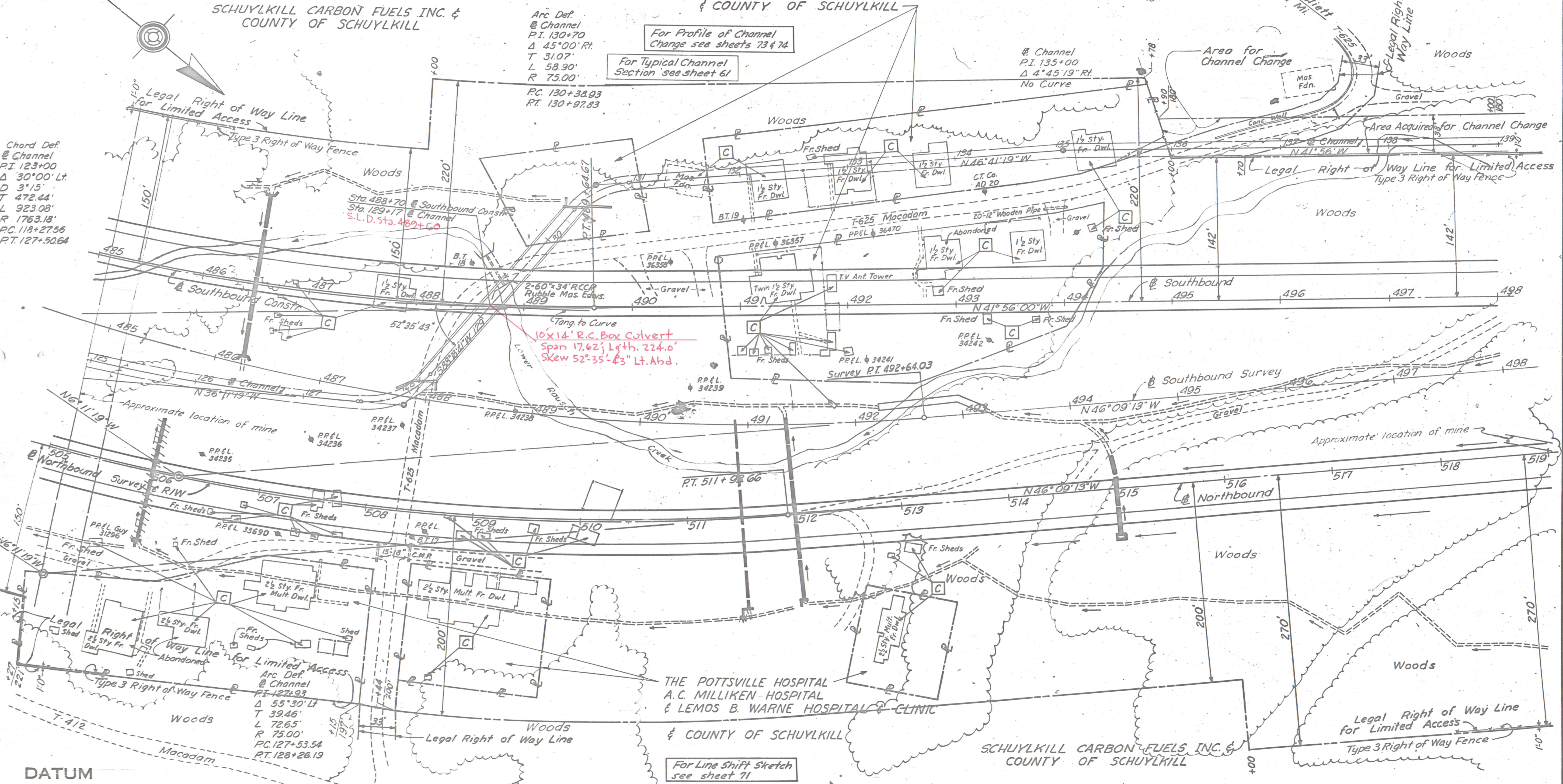
Drainage Area 3.2 S.M.  
 Area Required (125%) 135 S.F.  
 Area Provided 140 S.F.

THE POTTSVILLE HOSPITAL  
 A.C. MILLIKEN HOSPITAL  
 & LEMOS B. WARNE HOSPITAL & CLINIC  
 & COUNTY OF SCHUYLKILL

Spiral & Construction Data  
 Dc = 3° 00'  
 Ts = 765.89  
 Ls = 300'  
 p = 1.96'

Start Spiral Sta. 475+80.96  
 Offset 0.98' Lt. Sta. 477+30.93 & Sta. 489+64.67  
 Offset 1.96' Lt. Sta. 479+23.21 & Sta. 488+14.64  
 Stop Spiral Sta. 491+14.64  
 Superelevate 1/8" per ft.

SCHUYLKILL CARBON FUELS INC. &  
 COUNTY OF SCHUYLKILL



DATUM

For Line Shift Sketch see sheet 71