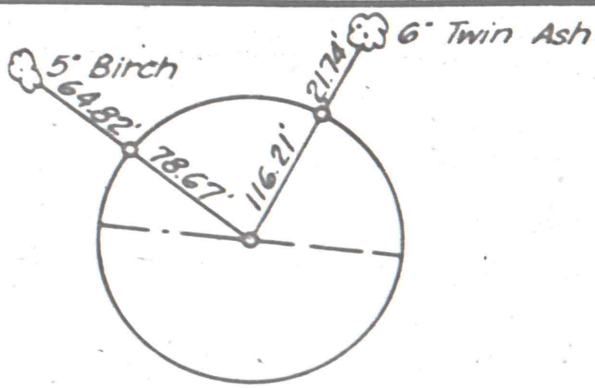
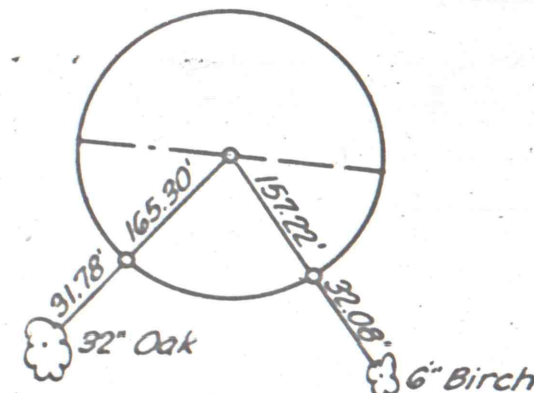


B.M. - Spike in 28" Twin Oak tree
 157' Rt. Sta. 502+00 @ Northbound
 Elev. 1030.035



PC. 479 + 31.86
 @ Southbound Survey



PC. 498 + 61.49
 @ Northbound

Chord Def.
 @ Southbound Constr.
 P.I. 483 + 89.10
 Δ 35° 44' 41" Lt.
 D 3° 00'
 T 615.92'
 L 1191.49'
 R 1910.08'

Spiral & Construction Data
 Dc = 3° 00' Start Spiral Sta. 475+80.96
 Ts = 765.89 Offset 0.98' Lt. Sta. 477+30.93 & Sta. 489+64.67
 Ls = 300' Offset 1.96' Lt. Sta. 479+23.21 & Sta. 488+14.64
 p = 1.96' Stop Spiral Sta. 491+14.64
 Superelevate 1/8" per ft.

Chord Def.
 @ Southbound Survey
 P.I. 486 + 26.41
 Δ 39° 57' 54" Lt.
 D 3° 00'
 T 694.55'
 L 1332.17'
 R 1910.08'

Chord Def.
 Survey & RIW Data
 @ Northbound
 P.I. 505 + 56.04
 Δ 39° 57' 54" Lt.
 D 3° 00'
 T 694.55'
 L 1332.17'
 R 1910.08'

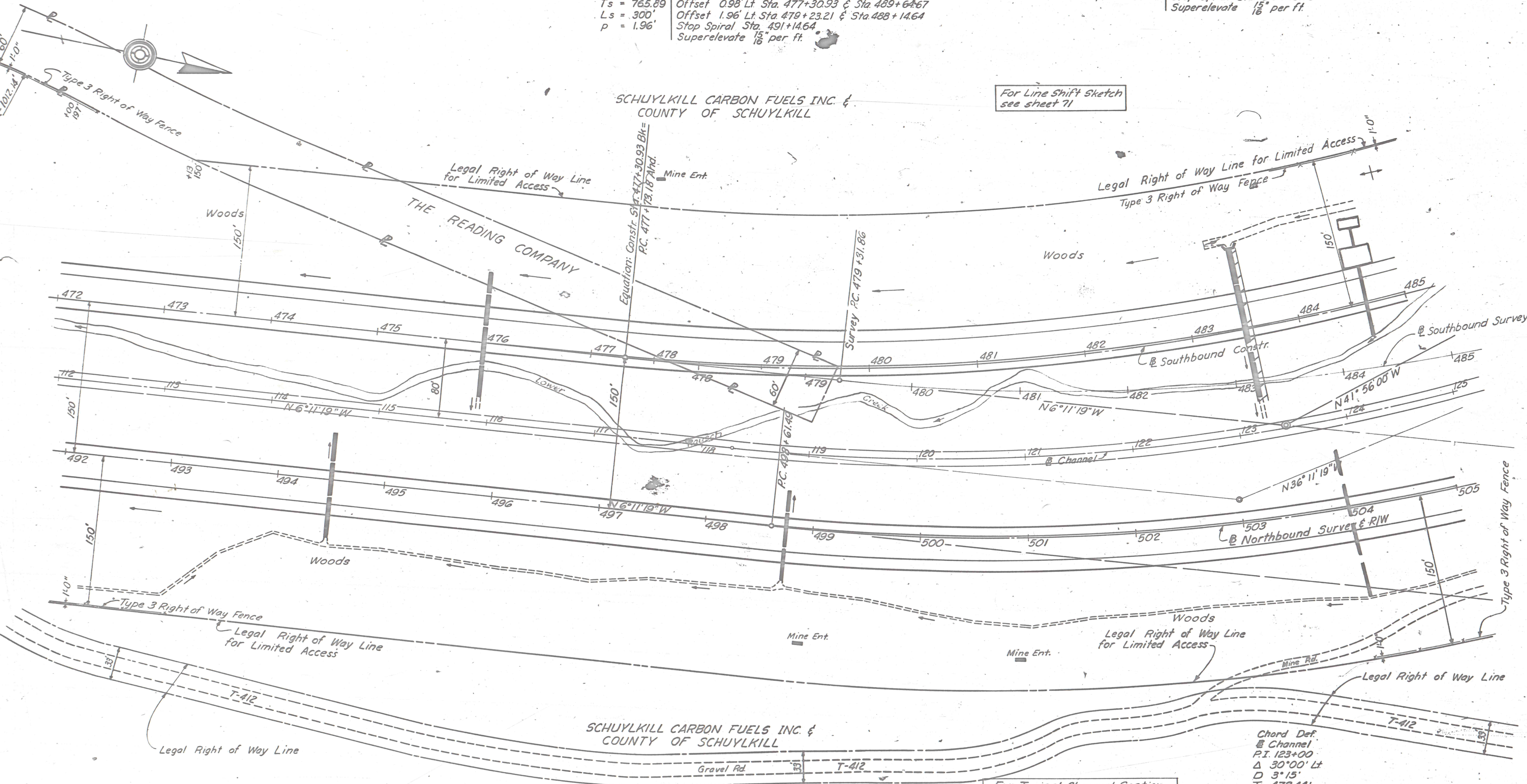
Spiral & Construction Data
 Dc = 3° 00' Start Spiral Sta. 497+11.52
 Ts = 844.52 Offset 0.98' Lt. Sta. 498+61.49 & Sta. 511+93.66
 Ls = 300' Offset 1.96' Lt. Sta. 500+11.52 & Sta. 510+43.63
 p = 1.96' Stop Spiral Sta. 513+43.63
 Superelevate 1/8" per ft.

DISTRICT	COUNTY	ROUTE	SECTION	SHEET
5-0	SCHUYLKILL	1005	53	64 of 142

REQUIRED LIST	
NORTHBOUND	
Sta. 492+25 to Sta. 498+65 Rt.	
543 C.Y. Cl. 2 Exc. - Parallel Ditch, 24" bottom	
Sta. 494+50	
118	+20 L.F. 18" ACC.M. Pipe, Fully Coated*
Sta. 498+75	
73	88 C.Y. Cl. 2 Exc. - Pipe
3 C.Y. Cl. 2 Exc. - Inlet Ditch	
Sta. 498+75	
124	+00 L.F. 18" ACC.M. Pipe, Fully Coated*
Sta. 498+75 to Sta. 505+90 Rt.	
86	73 C.Y. Cl. 2 Exc. - Pipe
534 C.Y. Cl. 2 Exc. - Parallel Ditch, 24" bottom	

SCHUYLKILL CARBON FUELS INC. & COUNTY OF SCHUYLKILL

For Line Shift Sketch see sheet 71



SOUTHBOUND	
Sta. 473+75 to Sta. 475+60	
496	Rdwy. Exc. Includes approx. C.Y. Unsuitable Mat. See X-Sections & Special Requirements
Sta. 475+25 to Sta. 477+25	
Rock Emb. for Base of Rdwy. Emb. See X-Sections	

127	Sta. 476+00
155	+36 L.F. 36" ACC.M. Pipe, Fully Coated*
+99 C.Y. Cl. 2 Exc. - Pipe	

Sta. 479+25 to Sta. 500+25	
Rock Emb. for Base of Rdwy. Emb. See X-Sections	

391	Sta. 483+25 to Sta. 484+75 Lt.
+749 C.Y. Cl. 1 Exc. - Parallel Ditch, 8' bottom	

Contd. on sheet 66

* See tabulation on sheet 13
 Books:
 Line & Topo 16661, 16662
 X-Sections 16680, 16681, 16695
 Misc. 16654

DATUM

For Typical Channel Section see sheet 61

For Profile of Channel Change see sheet 73

Chord Def.
 @ Channel
 P.I. 123+00
 Δ 30° 00' Lt.
 D 3° 15'
 T 472.44'
 L 923.08'
 R 1763.18'
 PC. 118+27.56
 PT. 127+50.64