

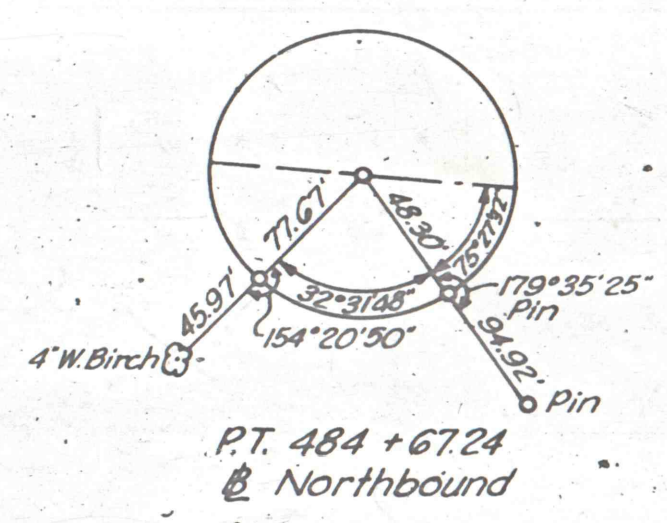
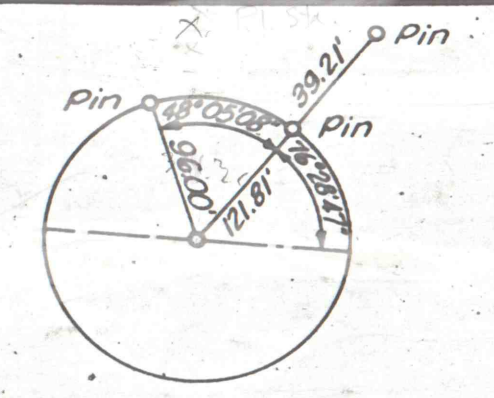
HOLDEN TUNNEL

DISTRICT	COUNTY	ROUTE	SECTION	SHEET
5-0	SCHUYLKILL	1005	53	61 of 142

TREMONT TWP.

Chord Def
Survey & RIW Data
@ Southbound
P.I. 457+26.87
Δ 47°08'14" Rt.
D 3°00'
T 833.25'
L 1571.24'
R 1910.08'

B.M. - □ Cut on Conc. Wall
230' Rt. Sta. 482+50 @ Northbound
Elev. 954.581



Chord Def
Survey & RIW Data
@ Northbound
P.I. 477+29.25
Δ 47°08'14" Rt.
D 3°00'
T 833.25'
L 1571.24'
R 1910.08'

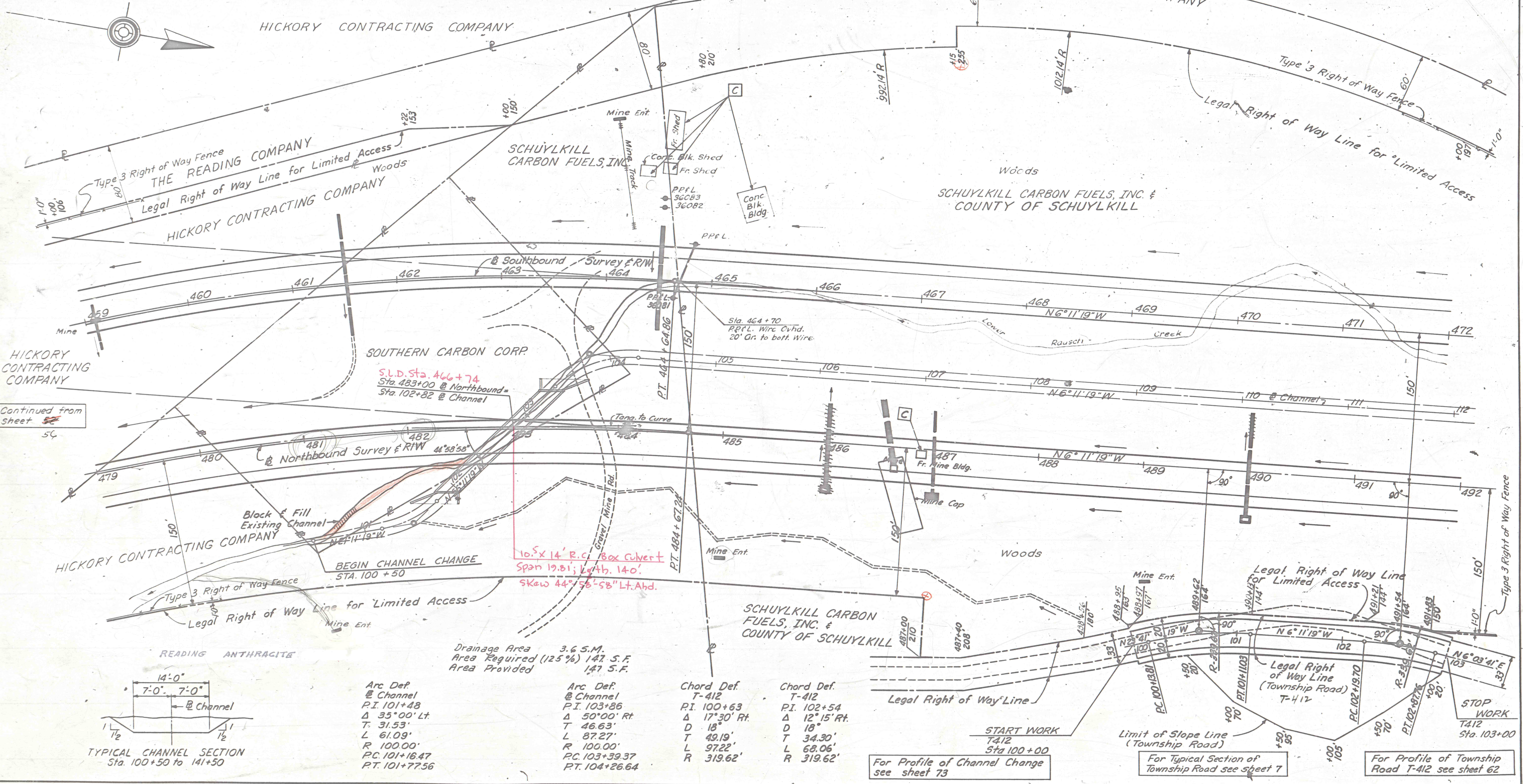
Spiral & Construction Data
Dc = 3°00' Start Spiral Sta 467+46.03
Ts = 983.22 Offset 0.98' Rt Sta 463+96.00 & Sta 484+67.24
Ls = 300' Offset 1.96' Rt Sta 470+46.03 & Sta 483+17.21
p = 1.96' Stop Spiral Sta 486+17.21
Superelevate 1/8" per ft.

Spiral & Construction Data
Dc = 3°00' Start Spiral Sta 447+43.65
Ts = 983.22 Offset 0.98' Rt Sta 448+93.62 & Sta 464+64.86
Ls = 300' Offset 1.96' Rt Sta 450+43.65 & Sta 463+14.83
p = 1.96' Stop Spiral Sta 466+14.83
Superelevate 1/8" per ft.

Stakes
Yellow Mark on Pavement
481 to 482

P.T. 464+64.86 @ Southbound

P.T. 484+67.24 @ Northbound

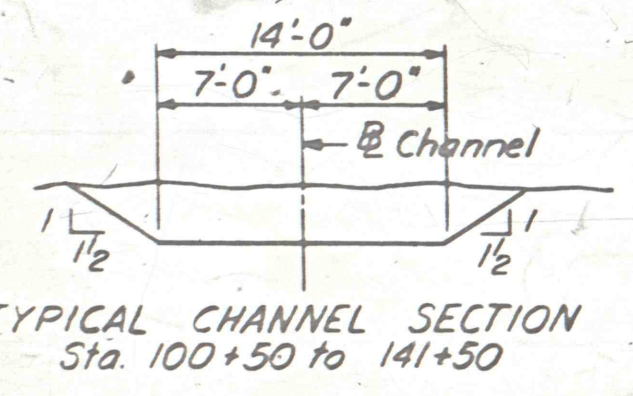


Continued from sheet 54

S.I.D. Sta. 466+74
Sta. 483+00 @ Northbound =
Sta. 102+82 @ Channel

10.5 x 14' R.C. Box Culvert
Span 19.81; LxH. 14'0"
Skew 44°55'58" Lt. Abd.

Drainage Area 3.6 S.M.
Area Required (125%) 147 S.F.
Area Provided 147 S.F.



Arc Def
@ Channel
P.I. 101+48
Δ 35°00' Lt.
T 31.53'
L 61.09'
R 100.00'
P.C. 101+16.47
P.T. 101+77.56

Arc Def
@ Channel
P.I. 103+86
Δ 50°00' Rt.
T 46.63'
L 87.27'
R 100.00'
P.C. 103+39.37
P.T. 104+26.64

Chord Def
T-412
P.I. 100+63
Δ 17°30' Rt.
D 18'
T 49.19'
L 97.22'
R 319.62'

Chord Def
T-412
P.I. 102+54
Δ 12°15' Rt.
D 18'
T 34.30'
L 68.06'
R 319.62'

START WORK
T412
Sta 100+00
For Profile of Channel Change
see sheet 73

Limit of Slope Line
(Township Road)
For Typical Section of
Township Road see sheet 7

STOP WORK
T412
Sta. 103+00
For Profile of Township
Road T-412 see sheet 62

REQUIRED LIST	
NORTHBOUND	
Contd. from Sheet 56	
Sta 481+25 to Sta. 482+00 Rt.	31 C.Y. Emb. - Fill Pocket See X-Sections
Sta 481+25 to Sta. 483+35	Rock Emb. for Base of Rdwy Emb. See X-Sections
Sta 482+00 to Sta. 483+50 Rt.	480 C.Y. Cl. 2 Exc. - Parallel Ditch 24" bottom
Sta 483+00 Lt & Rt.	Channel Change Sta. 100+50 to Sta. 141+50 50427 C.Y. Cl. 1 Exc. 10 C.Y. Emb. - Block & Fill Exist. Channel
Sta 485+00 to Sta. 486+25	57 C.Y. Cl. 1 Exc. - Transition Gut to Fill 57 C.Y. Emb. - Bfill See X-Sections & Detail on Sheet 10
Sta 485+00 to Sta. 486+25	32 C.Y. Cl. 1 Exc. - 1' Below Subgrade 32 C.Y. Emb. - Bfill Granular See X-Sections
Sta 485+25 to Sta. 486+40	Rock Emb. for Base of Rdwy Emb. See X-Sections
Contd. on sheet 62	
SOUTHBOUND	
Sta 459+09	200 C.Y. Cl. 1 Exc. - Expose Mine Void 200 C.Y. Emb. - Bfill, Rock 90 L.F. 12" ACC.M. Pipe, Fully Coated* 50 C.Y. Cl. 2 Exc. - Pipe See X-Sections
Sta 461+50 to Sta. 461+85 Lt.	54 C.Y. Cl. 2 Exc. - Parallel Ditch 24" bottom
Sta 461+25 to Sta. 462+75 Lt.	75 C.Y. Emb. - Fill Pocket See X-Sections
Sta 461+50	134 L.F. 18" ACC.M. Pipe, Fully Coated*
Sta 463+75 to Sta. 473+75	98 C.Y. Cl. 2 Exc. - Pipe 28 C.Y. Cl. 2 Exc. - Outlet Ditch
Contd. on sheet 63	
* See tabulation on sheet 13	
Books: Line & Topo 16661, 16662 X-Sections 16680, 16681 Misc. 16654	