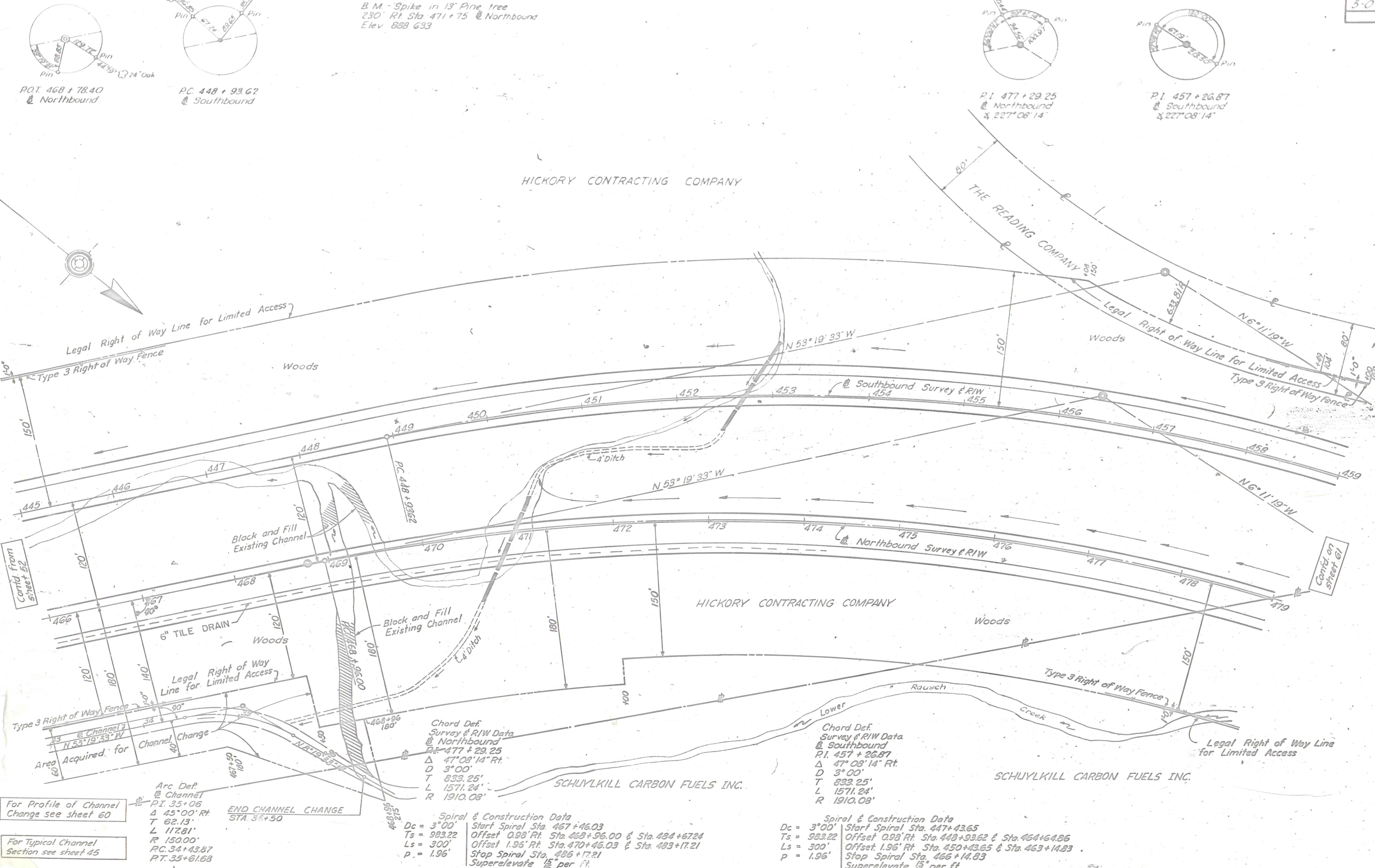


HICKORY CONTRACTING COMPANY



For Profile of Channel Change see sheet 60
For Typical Channel Section see sheet 45

Arc Def. @ Channel
PI. 35+06
Δ 45°00' Rt.
T 62.13'
L 117.81'
R 150.00'
PC. 34+43.87
PT. 35+61.68

END CHANNEL CHANGE
STA. 35+50

Chord Def. Survey & RIW Data @ Northbound
PI. 477 + 29.25
Δ 47°08'14" Rt.
D 3°00'
T 833.25'
L 1571.24'
R 1910.08'

Spiral & Construction Data
Dc = 3°00' Start Spiral Sta. 467+46.03
Ts = 983.22 Offset 0.98' Rt. Sta. 468+96.00 & Sta. 484+67.24
Ls = 300' Offset 1.96' Rt. Sta. 470+46.03 & Sta. 493+17.21
p = 1.96' Stop Spiral Sta. 486+17.21
Superelevate 1/8" per ft.

Chord Def. Survey & RIW Data @ Southbound
PI. 457 + 26.87
Δ 47°08'14" Rt.
D 3°00'
T 833.25'
L 1571.24'
R 1910.08'

Spiral & Construction Data
Dc = 3°00' Start Spiral Sta. 447+43.65
Ts = 983.22 Offset 0.98' Rt. Sta. 448+93.62 & Sta. 464+64.86
Ls = 300' Offset 1.96' Rt. Sta. 450+43.65 & Sta. 463+14.83
p = 1.96' Stop Spiral Sta. 466+14.83
Superelevate 1/8" per ft.

REQUIRED LIST

- NORTHBOUND**
- 45 Sta 457+75 to Sta 468+25
 - 46 C.Y. C1 Exc - Transition Cut to Fill
 - 45 C.Y. Emb. Bfill
 - See X-Sections & detail on sheet 10
 - Sta 468+75 to Sta 472+25
 - Rock Emb. for Base of Rdwy. Emb.
 - See X-Sections
 - Sta 470+95
 - 136 L.F. 42" A.C.C.M. Pipe, Fully Coated*
 - 191 205 C.Y. C1.2 Exc. - Pipe
 - 285 C.Y. C1.2 Exc. Outlet Ditch
 - Sta 474+10 to Sta 480+00
 - Rock Emb. for Base of Rdwy. Emb.
 - See X-Sections
 - 6965 Sta 474+10 to Sta 486+75
 - 13,129 C.Y. C1.1 Exc. - Remove Unsuitable Material
 - 6965 13,129 C.Y. Emb. Bfill.
 - See X-Sections & Special Requirements
- SOUTHBOUND**
- 99 C.Y. Sta 451+75 to Sta 452+75-Lt.
 - Emb. - Fill Pocket
 - See X-Sections
 - 258 C.Y. Sta 425+25 to Sta 453+00
 - C1.2 Exc. - Parallel Ditch
 - 24" bottom
 - 176 C.Y. Sta 450+25 to Sta 452+25
 - C1.2 Exc. - Parallel Ditch
 - 24" bottom
 - 145 Sta. 452 + 72
 - 160 L.F. 42" A.C.C.M. Pipe, Fully Coated*
 - 214 256 C.Y. C1.2 Exc. - Pipe
 - 240 C.Y. C1.2 Exc. Inlet & Outlet Ditches
 - Sta 454+00 to Sta 454+75
 - 120 C.Y. C1.1 Exc. - Remove Unsuitable Material
 - 120 C.Y. Emb. Bfill
 - See X-Sections & Special Requirements
 - Sta 454+00 to Sta 460+25
 - Rdwy. Exc. includes approx. 3660 C.Y. Unsuitable Matl.
 - See X-Sections & Special Requirements

Contd. on sheet 58

* See tabulation on sheet 13
Books:
Line & Topo 16661, 16662
X-Sections 16680, 16681
Misc 16652