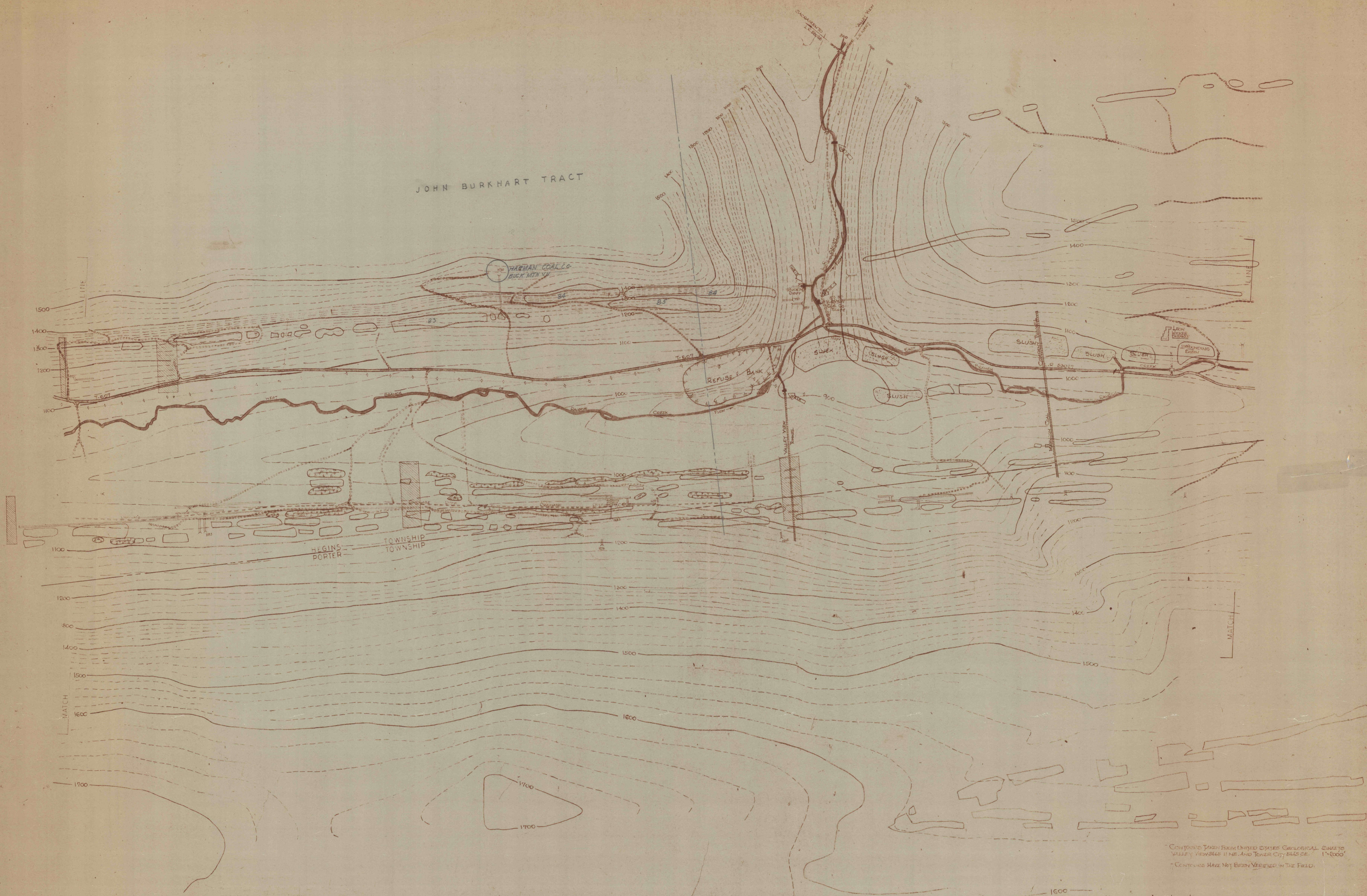


JOHN BURKHART TRACT



CONTOURS TAKEN FROM UNITED STATES GEOLOGICAL SURVEY VALLEY VIEW SHEET 11 NE AND TOWNSHIP 11 N. 1" = 1000'
 CONTOURS HAVE NOT BEEN VERIFIED IN THE FIELD.

REVISIONS	
RAUSCH CREEK WATERSHED	
LOCATION OF MINING, STRIPPING, SPOIL BANKS & WEIRS	JOB NO: 6805 DATE: 7/10/69 SCALE: 1" = 400' DRAWN: APPROVED:
ANTHRACITE RESEARCH & DEVELOPMENT CO. INC. CONSULTING ENGINEERS POTTSVILLE PENNSYLVANIA TAMAGUA	DRAWING NO: 6805-P-1 SECTION-2

