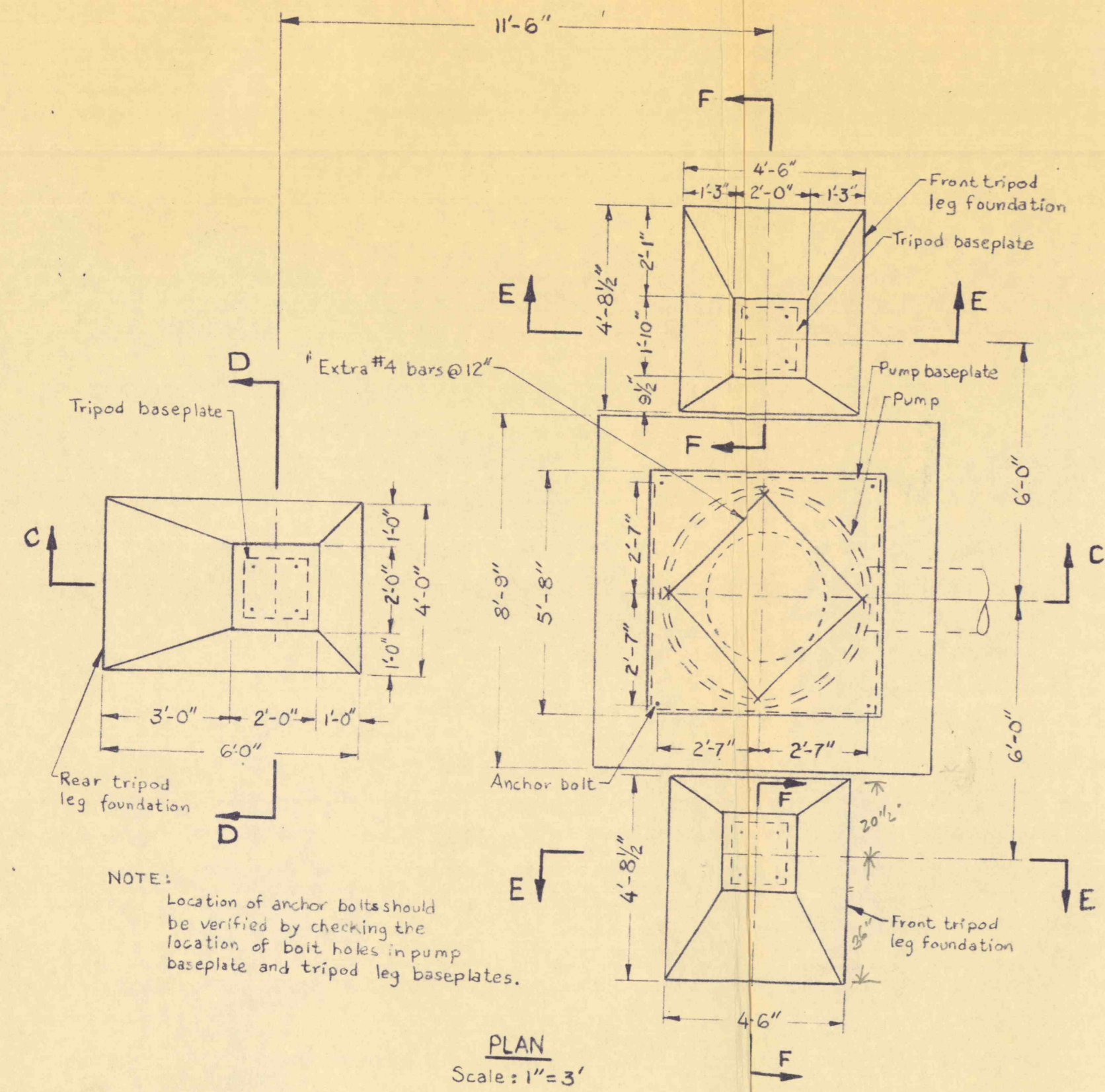
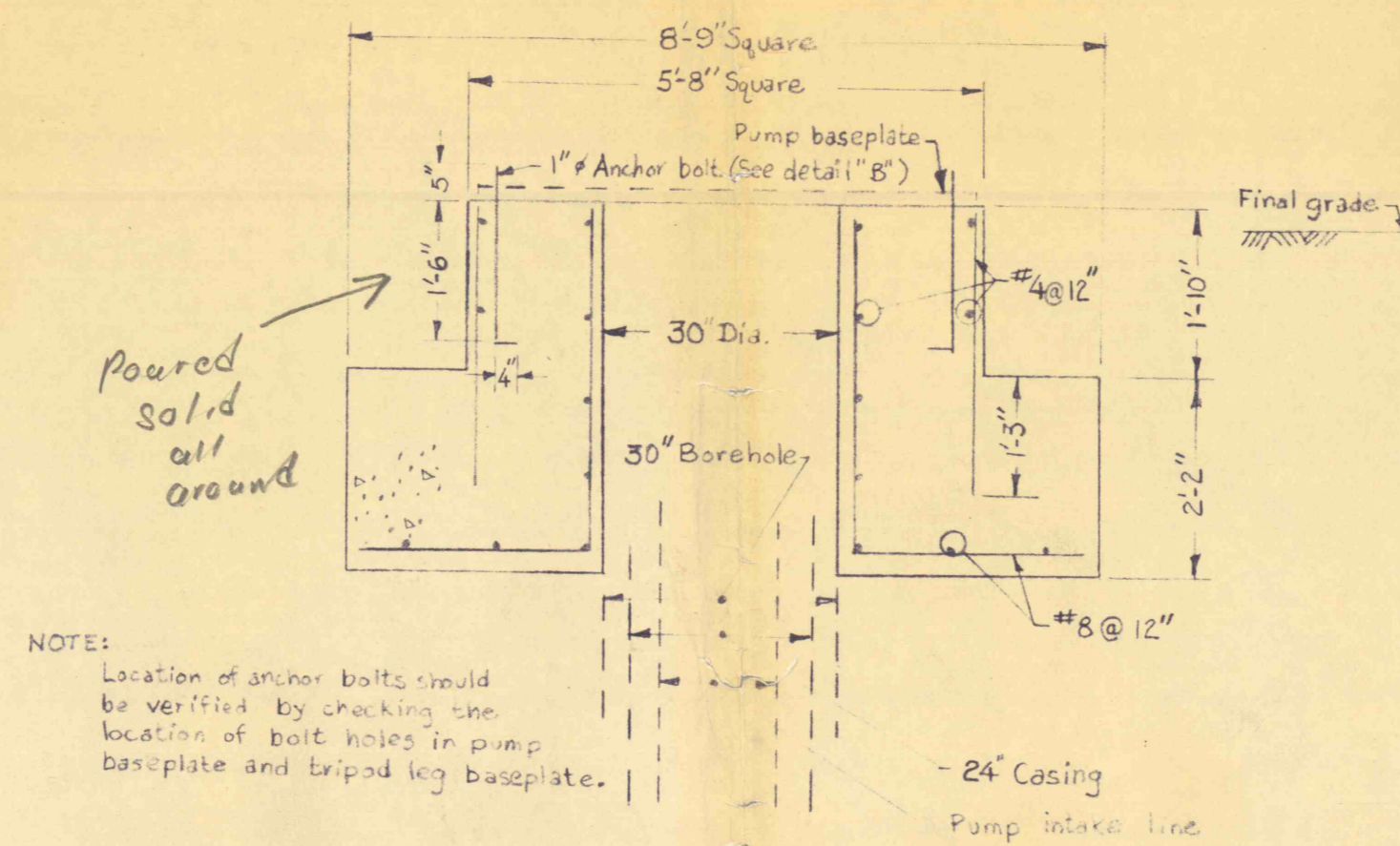


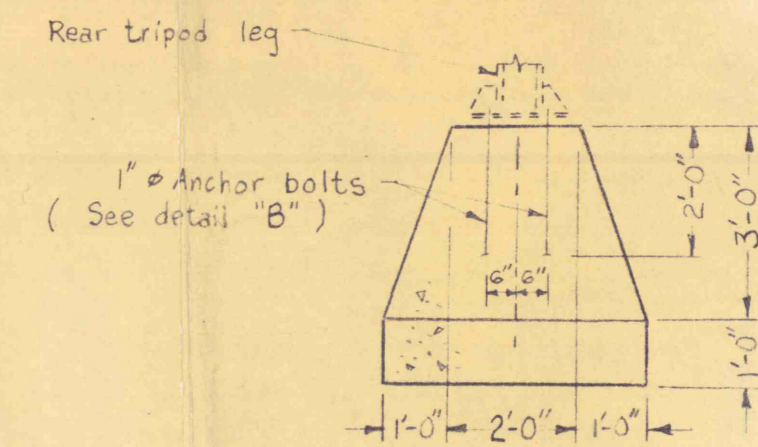
5.9607



PUMP & TRIPOD FOUNDATIONS
Scale: 1" = 3'



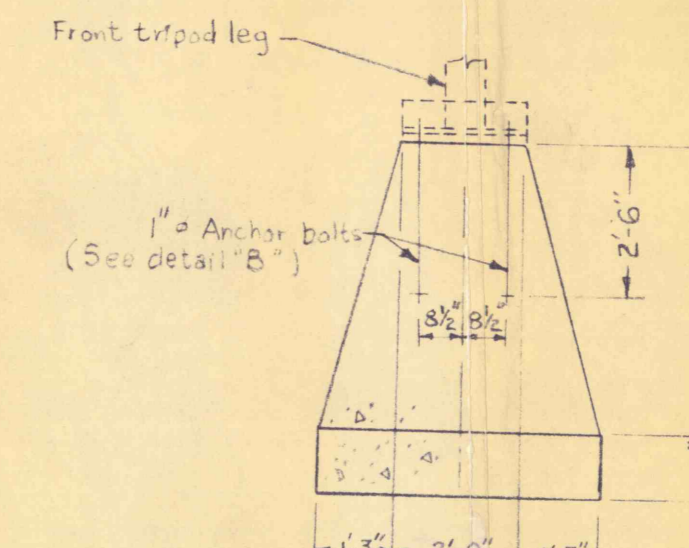
SECTION C-C
Scale: 1" = 2'



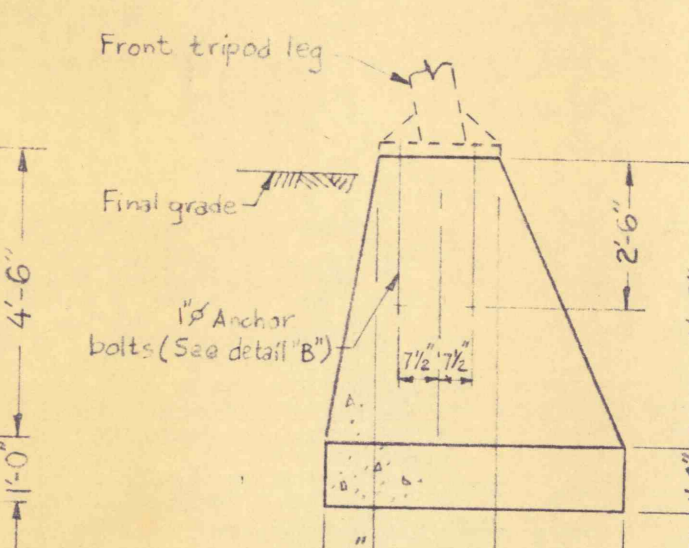
SECTION D-D

NOTE: Location of anchor bolts should be verified by checking the location of bolt holes in pump baseplate and tripod leg baseplates.

Tripod Fdms
5.304

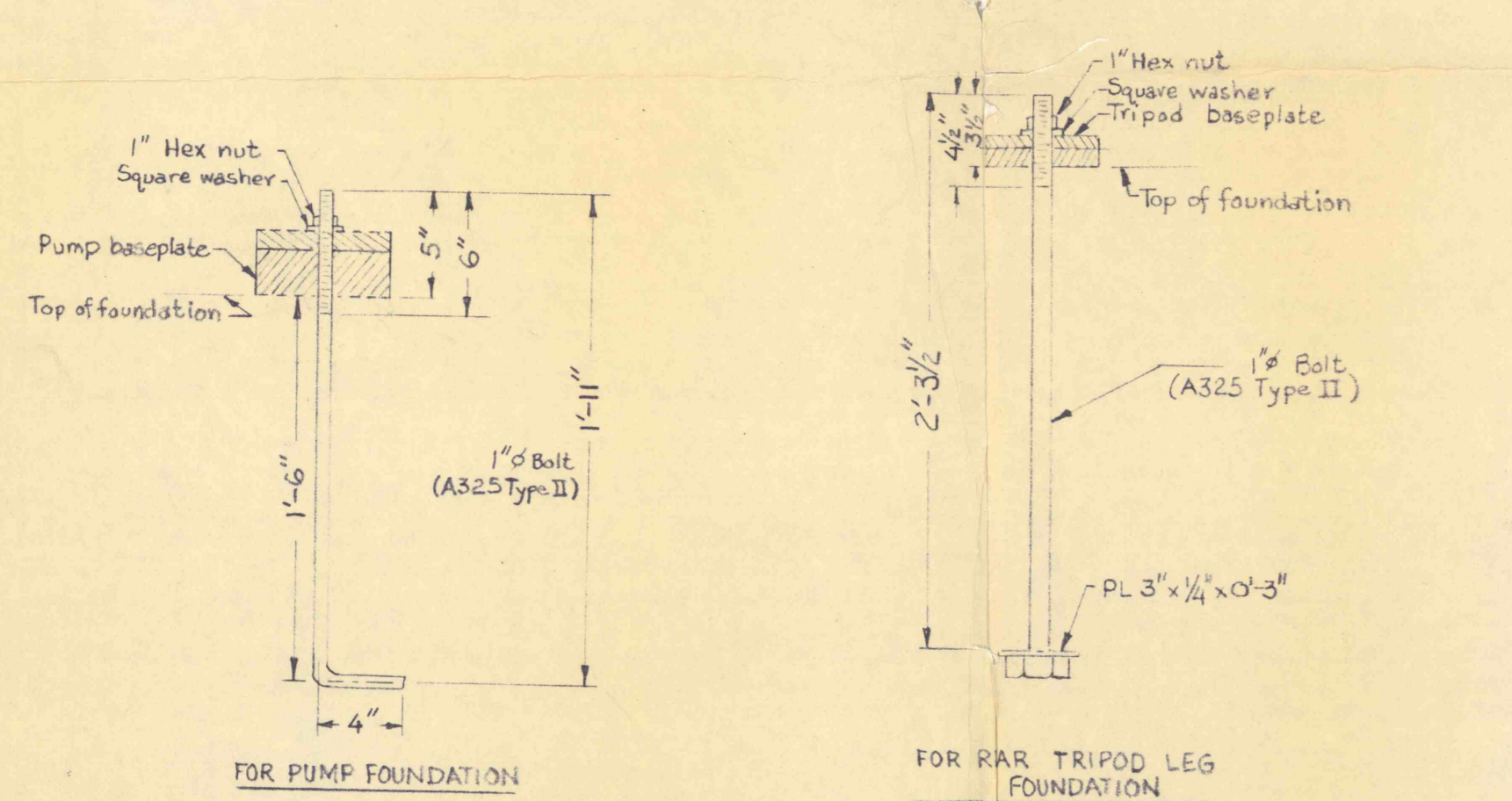


SECTION E-E



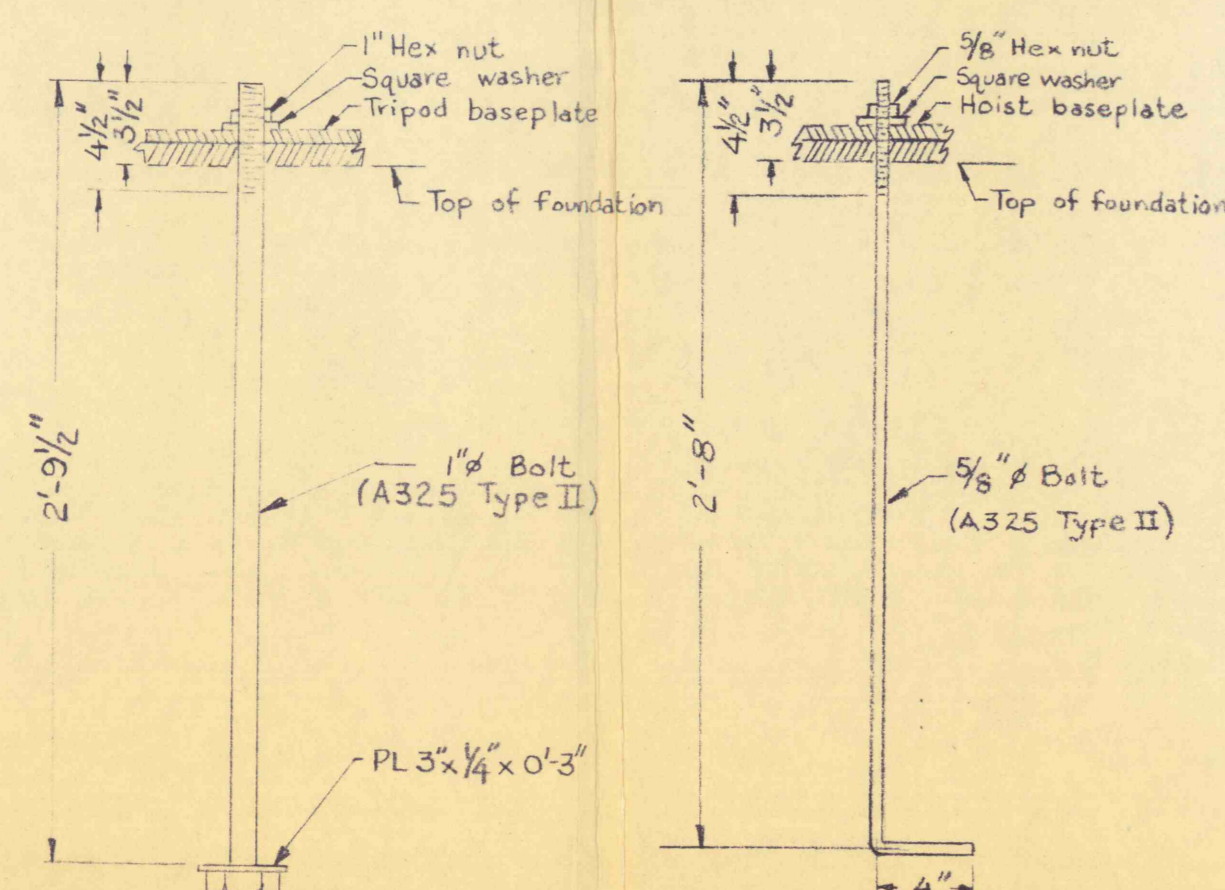
SECTION F-F

TRIPOD FOUNDATIONS
Scale: 1" = 3'



FOR PUMP FOUNDATION

FOR REAR TRIPOD LEG FOUNDATION

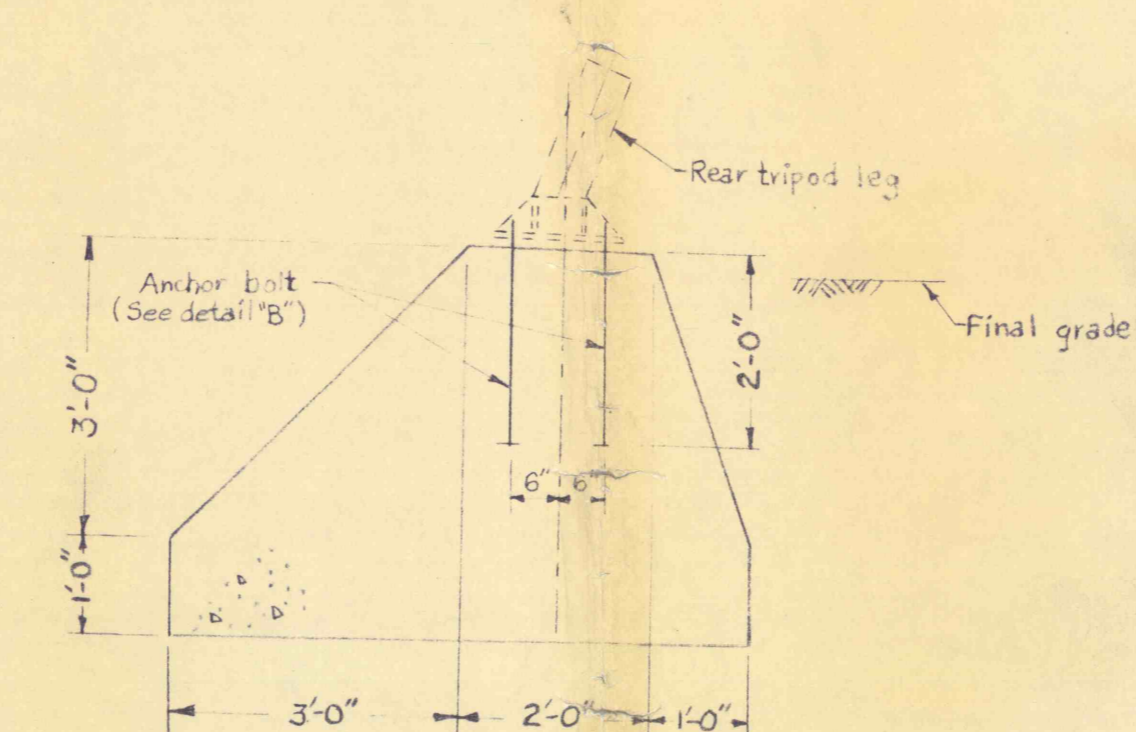


FOR FRONT TRIPOD LEG FOUNDATION

FOR HOIST FOUNDATION

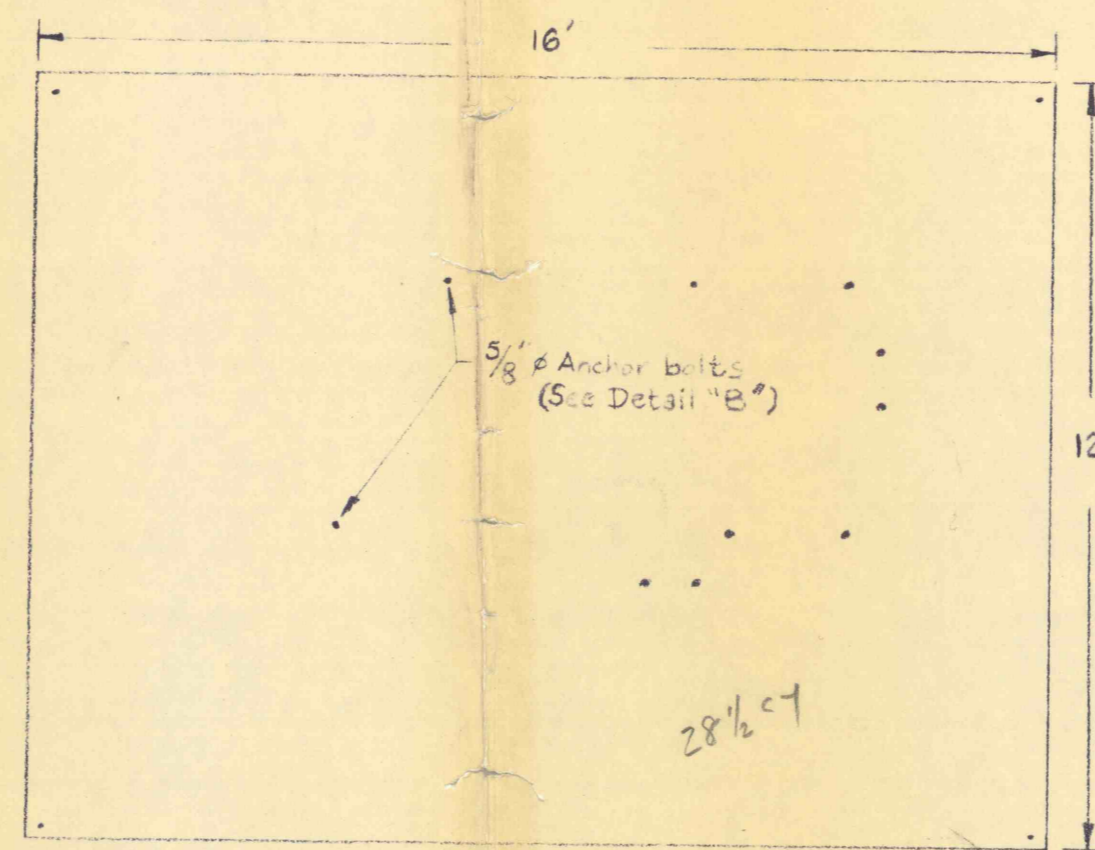
NOTE: Hex nuts and washers to be A325 Type II

DETAIL "B"
Scale: 1 1/2" = 1'
ANCHOR BOLTS



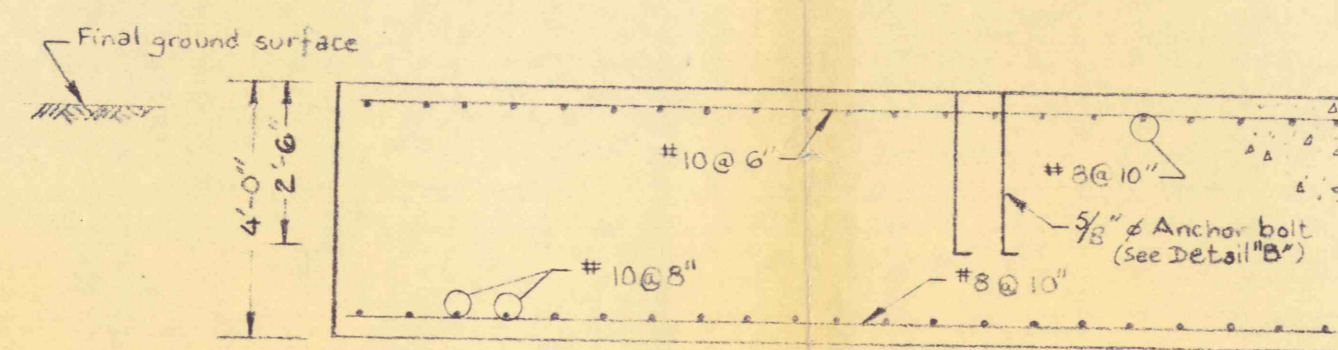
SECTION C-C
Scale: 1" = 2'

PUMP & TRIPOD FOUNDATION



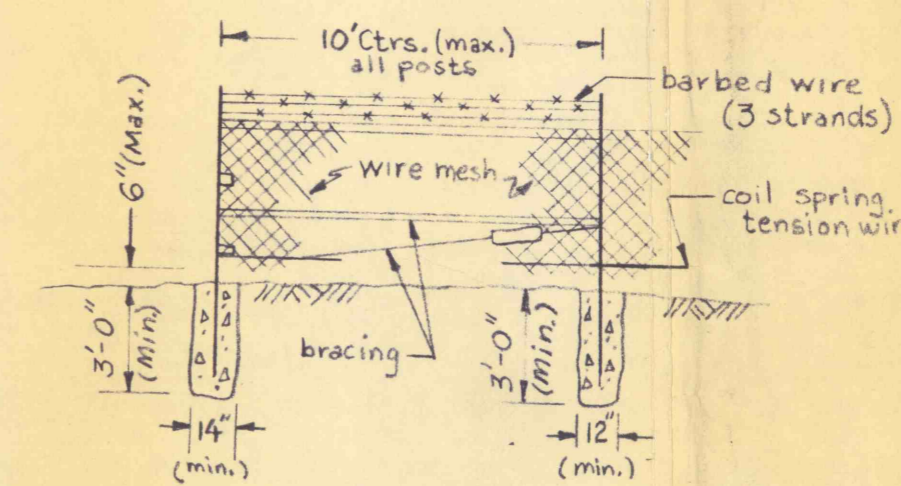
PLAN

NOTE: Location of anchor bolts should be verified by checking the location of bolt holes in the hoist.

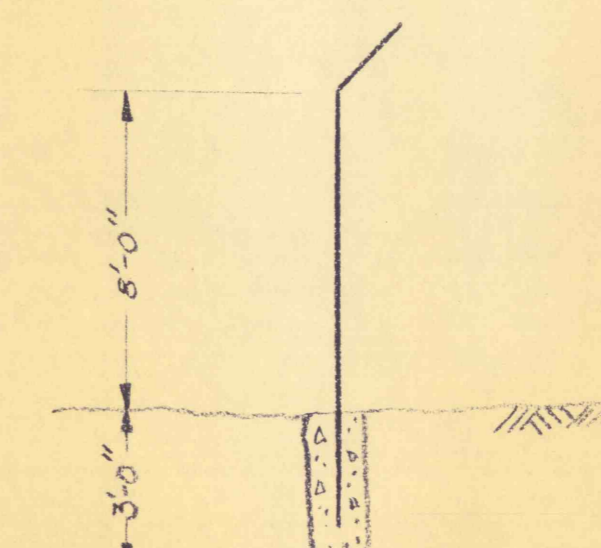


SECTION G-G

HOIST FOUNDATION
Scale: 1" = 3'



ELEVATION
NO SCALE



SECTION H-H
NO SCALE

CHAIN LINK FENCE

NO.	DATE	REVISION	APPR.
SUBMITTED			
DESIGN ENGINEER	<i>M. Ferko</i>		
APPROVED			
DISTRICT ENGINEER	<i>M. ...</i>		
APPROVED			
DIRECTOR BUREAU OF RESOURCES PROGRAMMING	<i>J. E. Kille</i>		
(SEALS)			
COMMONWEALTH OF PENNSYLVANIA DEPARTMENT OF ENVIRONMENTAL RESOURCES OFFICE OF RESOURCES MANAGEMENT			
PROJECT NO. MWC-48			
BOREHOLE CONSTRUCTION AND DEEP-WELL PUMP INSTALLATION NEAR VALLEY VIEW			
SCHUYLKILL COUNTY		PENNSYLVANIA	
PLAN, SECTIONS & DETAILS			
DRAWN BY	DATE	DRAWING NO.	
MRF	16 AUG 76		
CHECKED BY	SCALE		
MRF	AS SHOWN		
			3 of 3