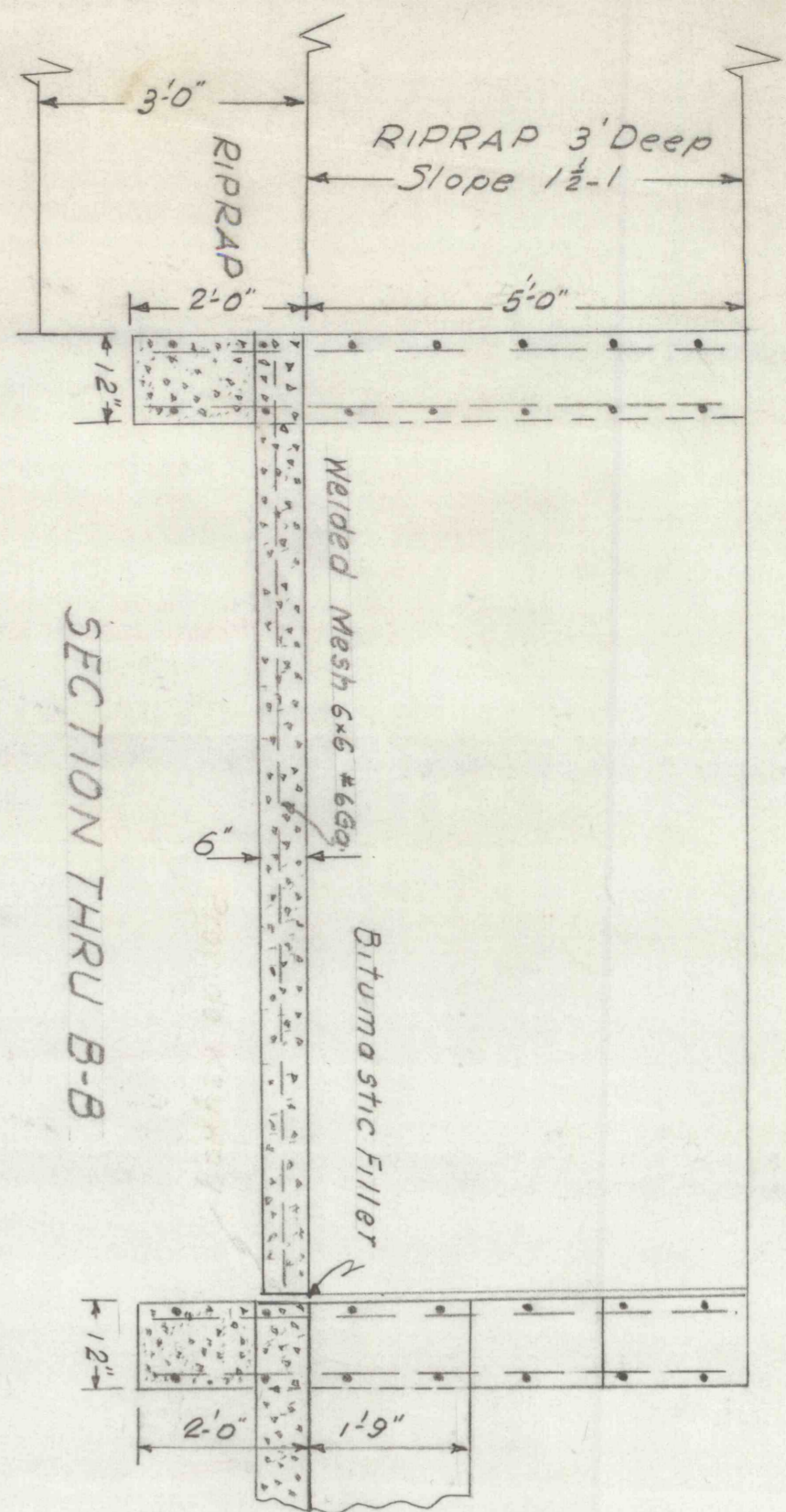
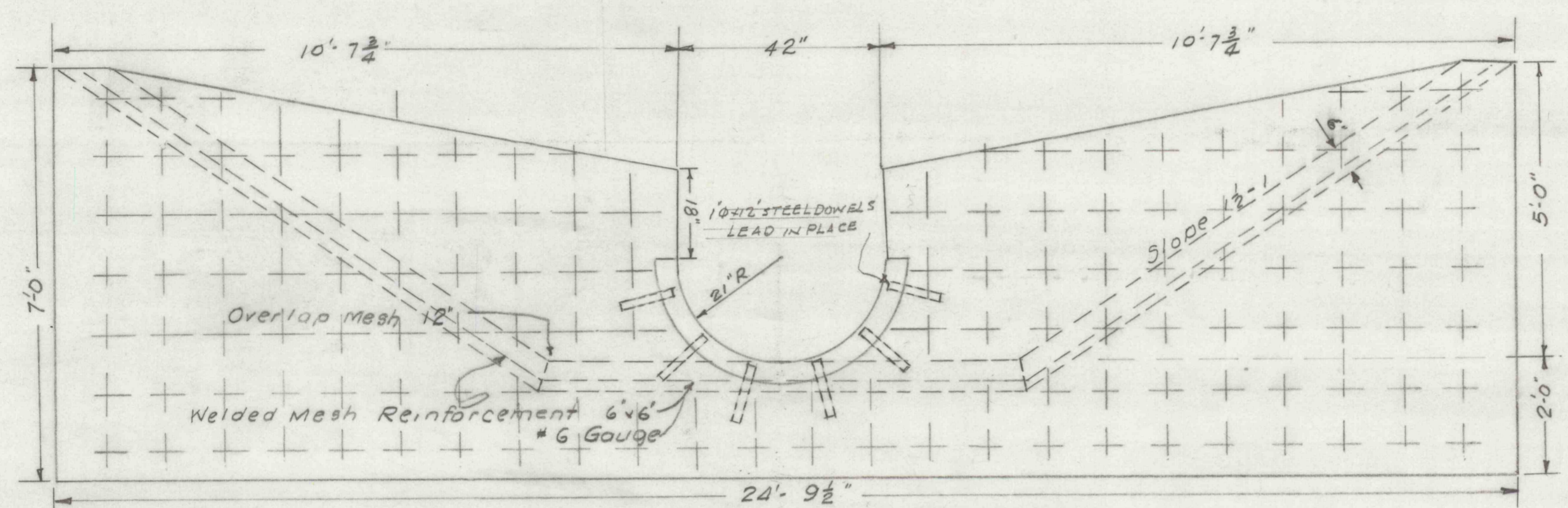


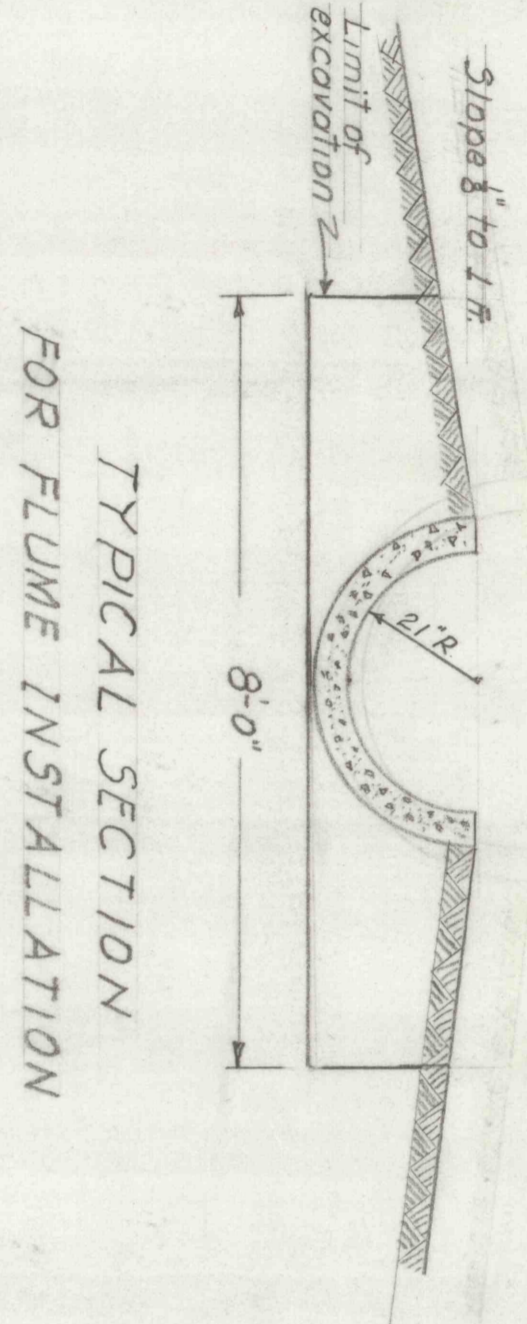
PLAN VIEW  
Apron, Endwall & Footer  
Scale 1/2" = 1 ft



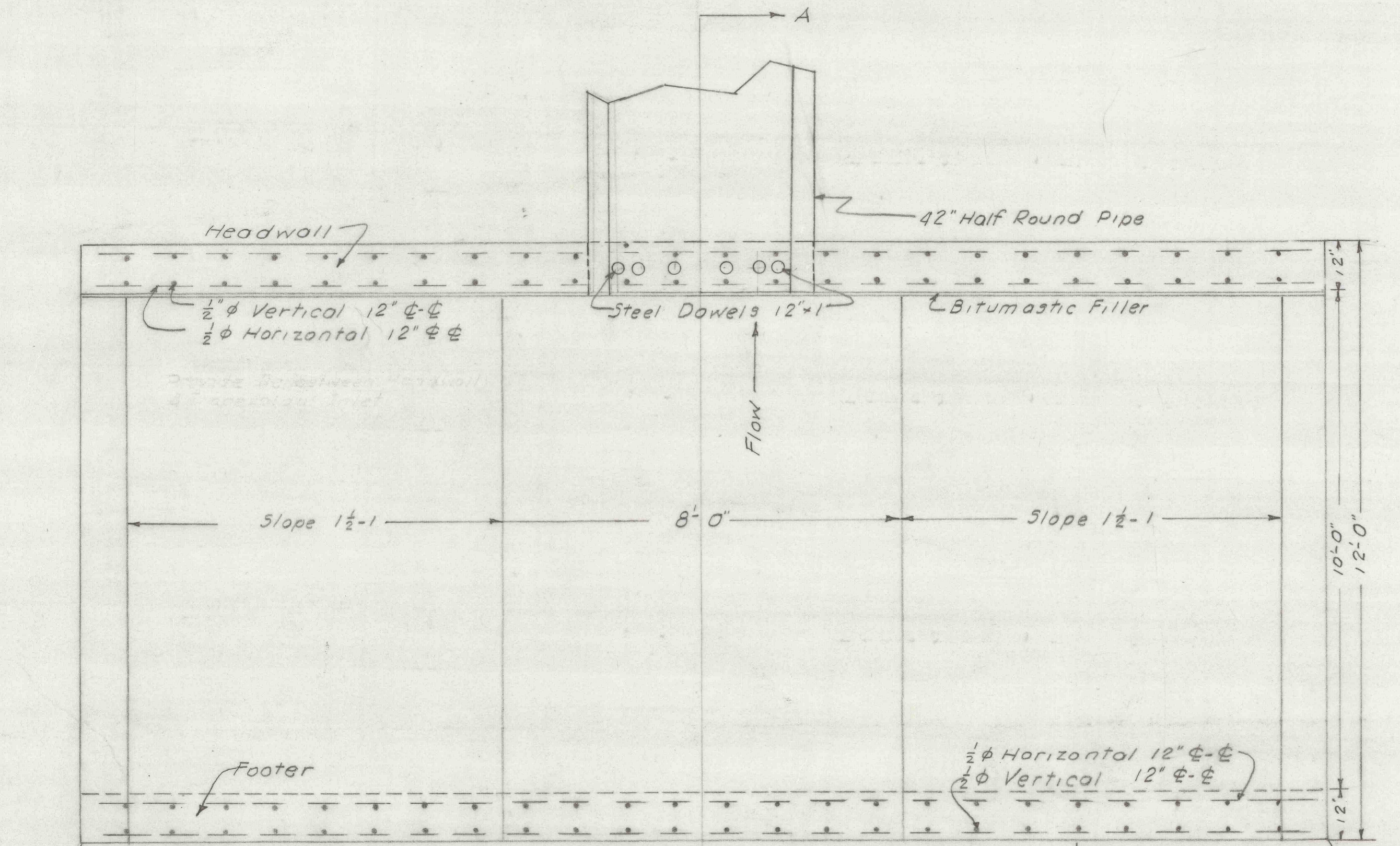
SECTION THRU B-B



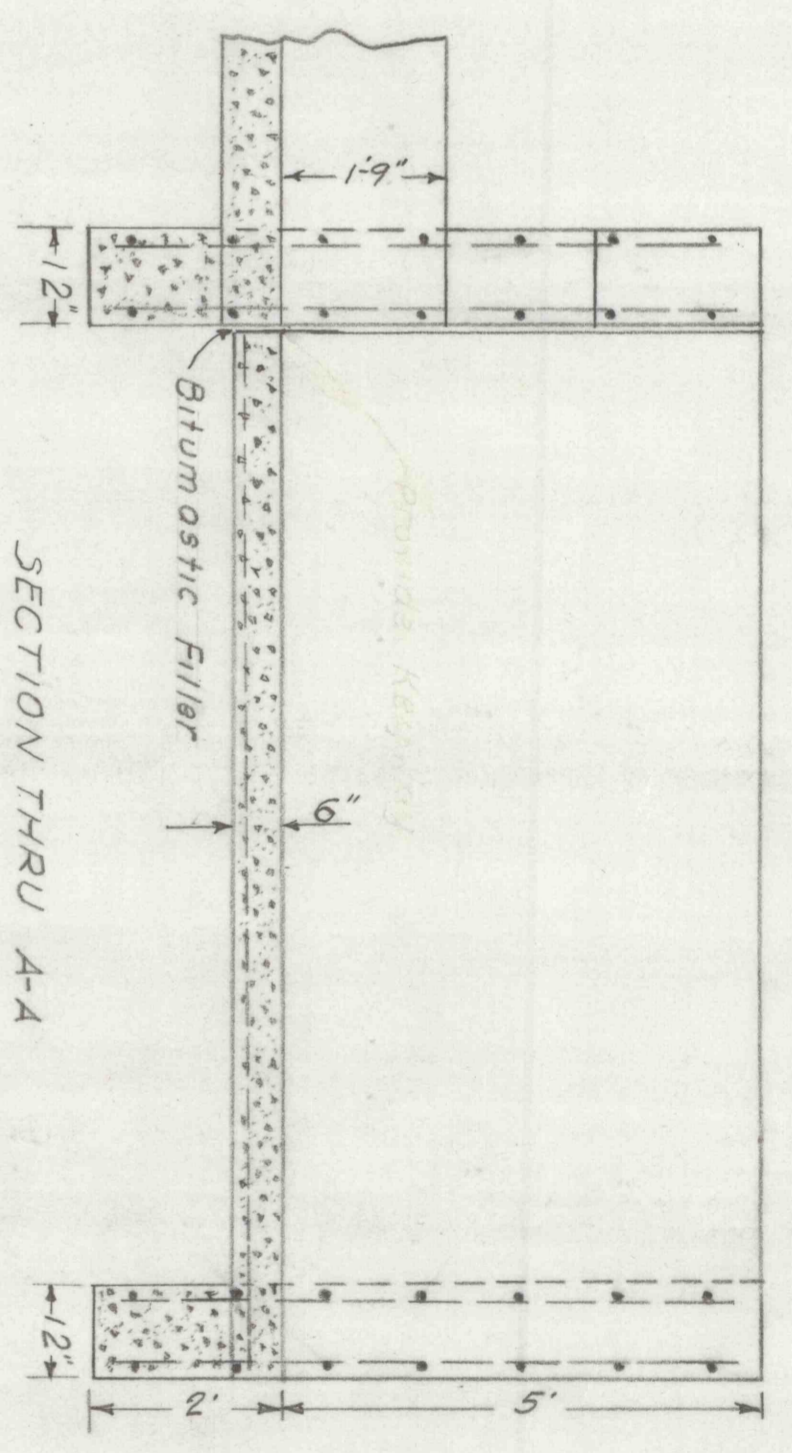
FRONT VIEW  
Scale 1/2" = 1 ft



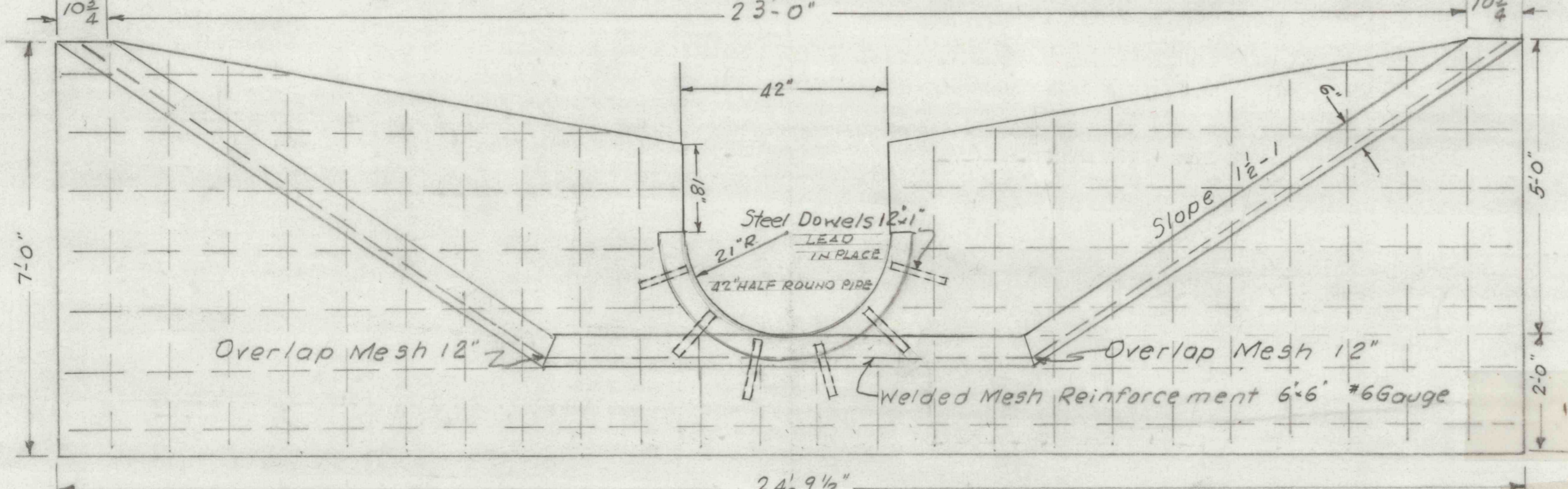
TYPICAL SECTION  
FOR FLUME INSTALLATION



PLAN VIEW  
Trapezoidal Inlet - Headwall & Footer



SECTION THRU A-A



FRONT VIEW  
Scale 1/2" = 1 ft

BILL OF MATERIAL FOR TRAPEZOIDAL INLET HEADWALL FOOTERS ENDWALL AND APRON	
Concrete	27 cu. yds
Reinforcing Rods 1/2" Dia	1750 ft
Wire Mesh 6x6 #6 Gauge	650 sq. ft.
Bitumastic Compound	14 Gallons
Steel Dowels 1" Dia.	12 ft

COMMONWEALTH OF PENNSYLVANIA  
DEPARTMENT OF MINES & MINERAL INDUSTRIES  
LAND & WATER CONSERVATION & RECLAMATION  
PROJECT NO SL-126-2-2  
BAILEY RUN  
PLAN SHOWING  
PROPOSED DRAINAGE FACILITIES AND  
TYPICAL INSTALLATION OF 42" FLUME  
LOCATED IN  
FRAILEY TOWNSHIP, SCHUYLKILL COUNTY  
PENNSYLVANIA  
JUNE 1969 SCALE 1/2" = 1'