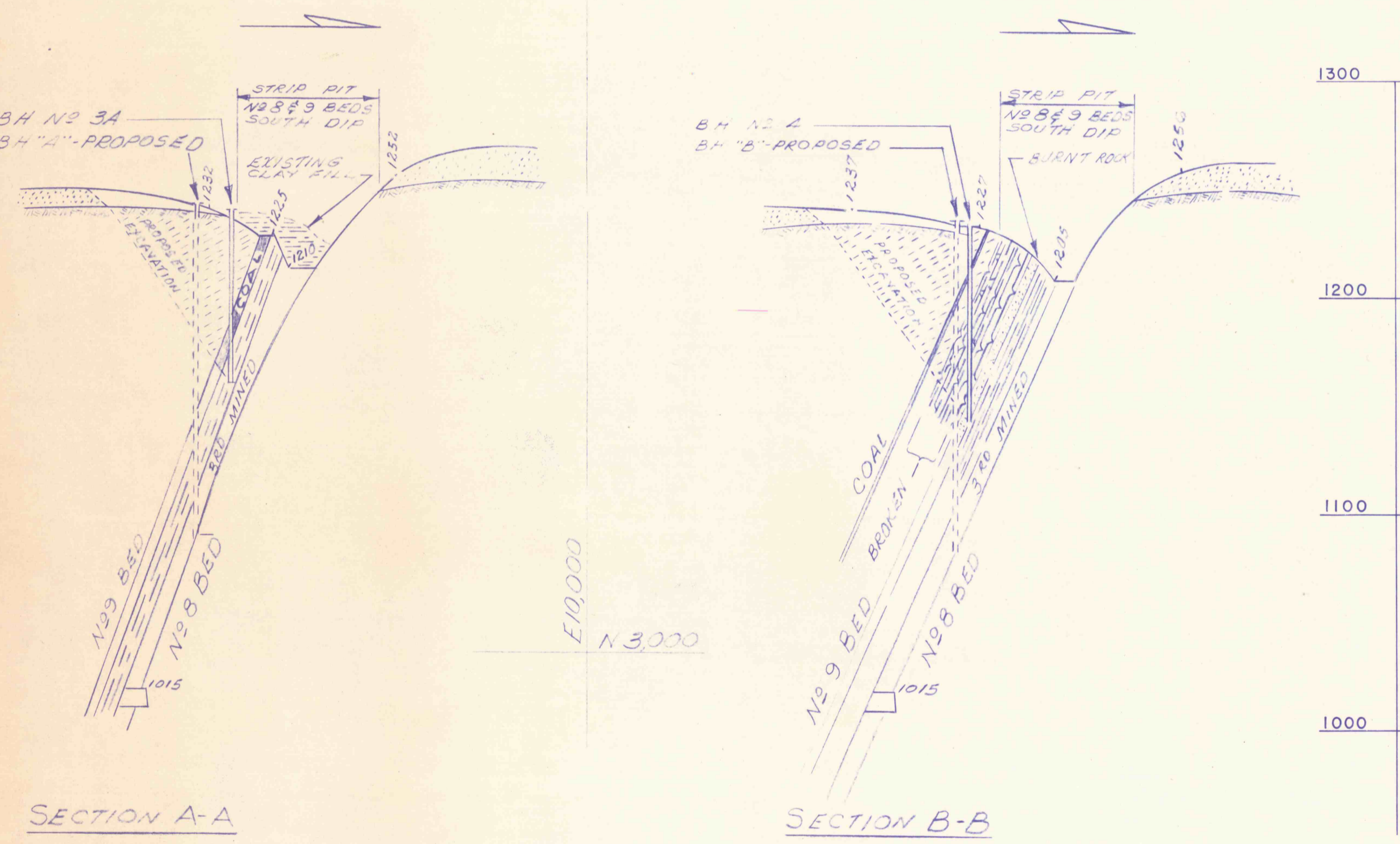
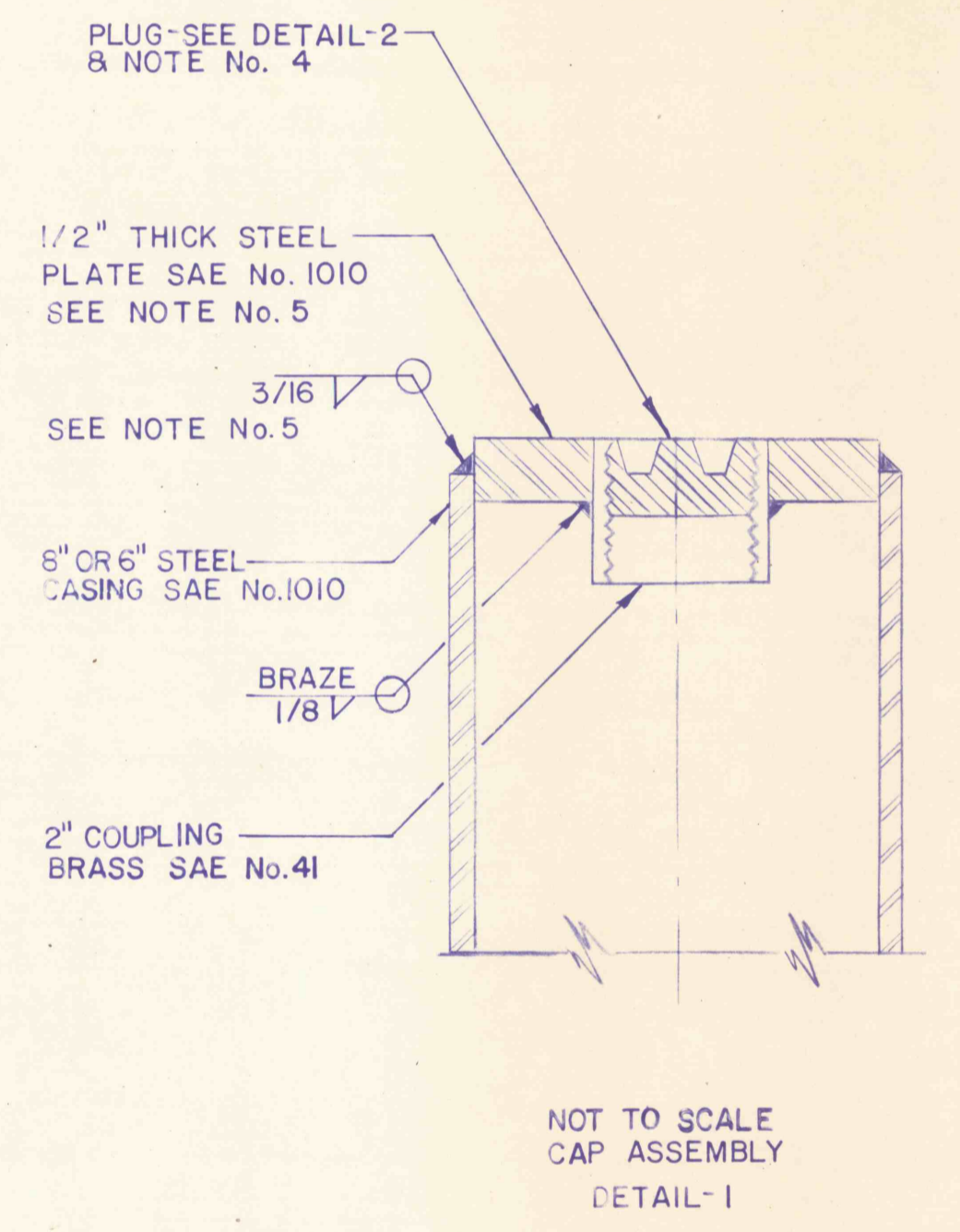


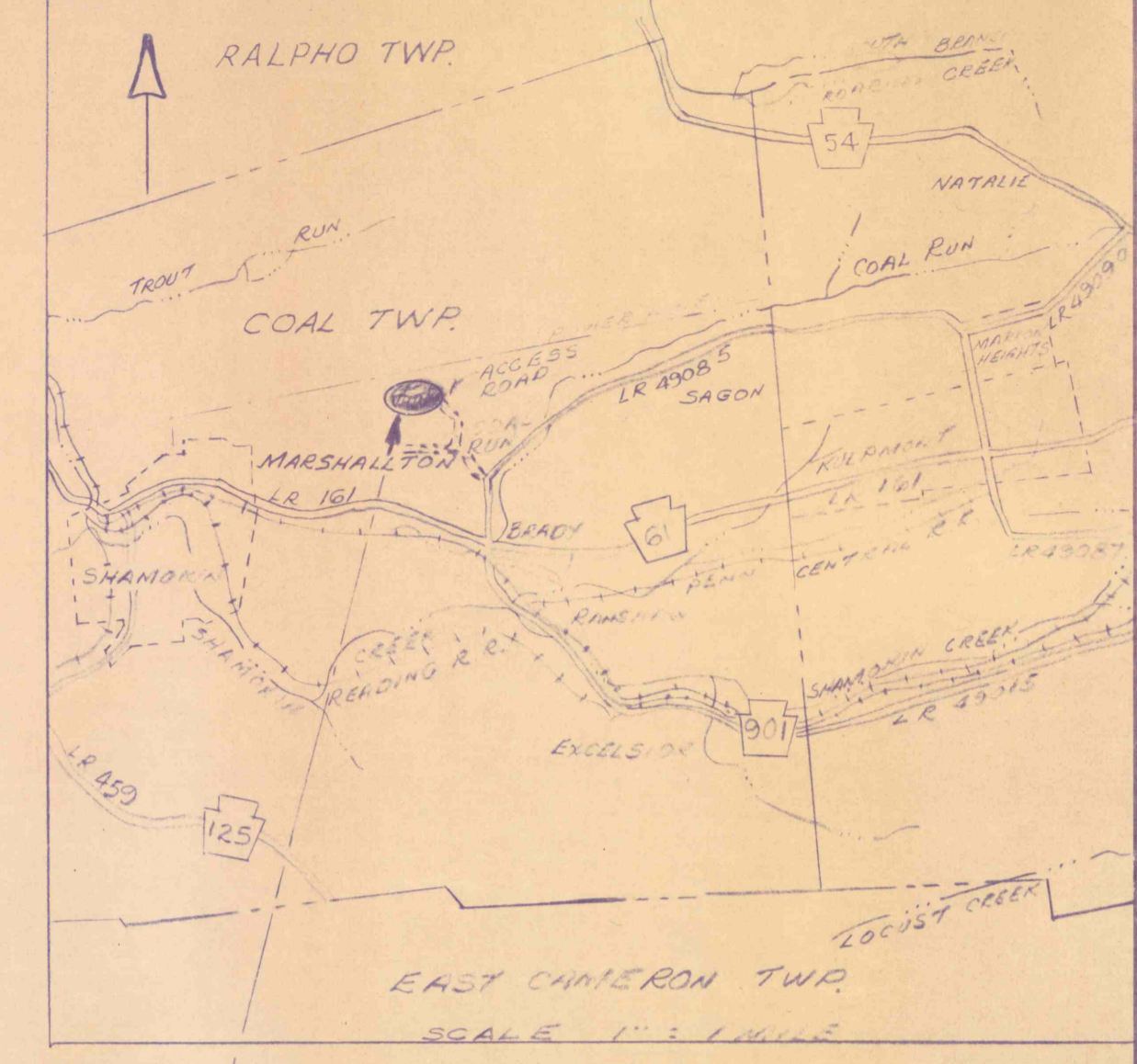
SECTION C-C
SCALE - FULL
MATERIAL BRASS SAE No. 41
PLUG
DETAIL - 2



SECTION A-A
SECTION B-B
SCALE 1" = 50'



NOT TO SCALE
CAP ASSEMBLY
DETAIL - 1



LOCATION MAP

- NOTES:
1. BH's No. 1 THRU 6 DRILLED BY U.S.B.M.
 2. BH's No. A & B PROPOSED BY D.E.R.
 3. CROSS-HATCH = PROPOSED EXCAVATION
 4. APPLY PIPE JOINT COMPOUND - GRAPHITE PASTE WHEN INSTALLING FLUSH WITH PLATE
 5. ALL WELDING & BRAZING MUST BE AIRTIGHT
 6. GENERAL CONTRACTOR TO FURNISH ONE (1) 4" KEY
 7. BOREHOLES No. 5 & 6 MUST BE REESTABLISHED BY DRILLING, CASING & CAPPING

NO.	DATE	REVISION	APPR.

DESIGN ENGINEER
DISTRICT ENGINEER
DIRECTOR - BUREAU OF DESIGN

COMMONWEALTH OF PENNSYLVANIA
DEPARTMENT OF ENVIRONMENTAL RESOURCES
OFFICE OF RESOURCES MANAGEMENT

CONTRACT NO. SL 336-101.5

DRILLING EXPLORATORY BOREHOLES AT THE HICKORY SWAMP MINE NEAR THE VILLAGE OF COAL RUN, COAL TOWNSHIP NORTHUMBERLAND COUNTY

LOCATION, PROJECT AREA, PLAN, DETAILS & SECTIONS

APPROVED
C.H. McCONNELL, DEPUTY SECRETARY DATE FOR RESOURCES MANAGEMENT

DRAWN BY: MMZ
CHECKED BY: AS SHOWN
DATE: 20 APRIL 77
SCALE: AS SHOWN
DRAWING NO.: 1 of 1