

**P.O.T. NO. 1**  
 N 485,925.90  
 E 2,381,883.65  
 Sta. 0+00 "F"

**CURVE NO. 1**  
 P.I. No. 1 N 485,919.91  
 E 2,382,596.94  
 $\Delta = 55^\circ 17' 54.7''$   
 $D = 7^\circ 11' 26.8''$   
 $R = 796.80'$   
 $T = 417.43'$   
 $L = 769.02'$

**CURVE NO. 2**  
 P.I. No. 2 N 486,503.00  
 E 2,383,008.00  
 $\Delta = 42^\circ 21' 23.5''$   
 $D = 7^\circ 29' 59.3''$   
 $R = 763.97'$   
 $T = 295.99'$   
 $L = 564.77'$

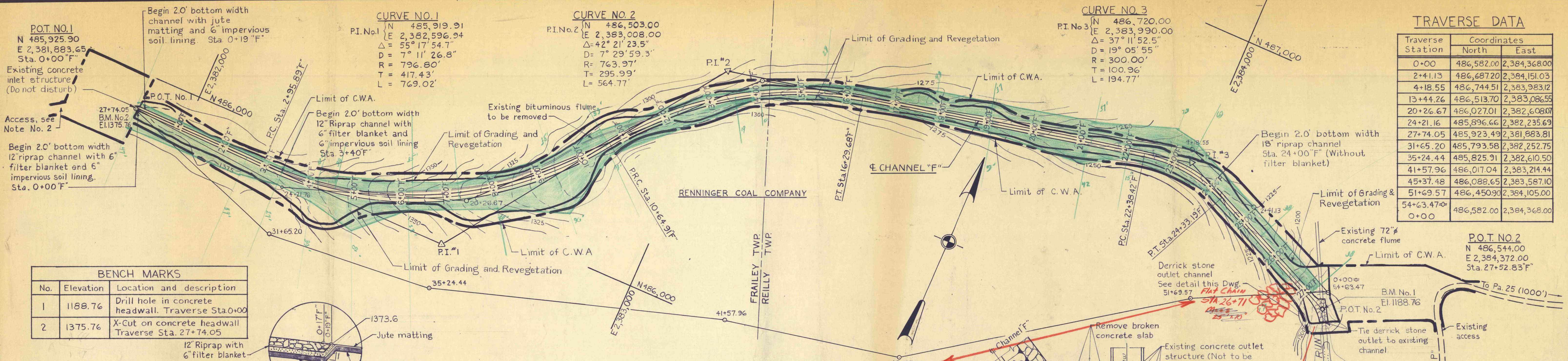
**CURVE NO. 3**  
 P.I. No. 3 N 486,720.00  
 E 2,383,990.00  
 $\Delta = 37^\circ 11' 52.5''$   
 $D = 19^\circ 05' 55''$   
 $R = 300.00'$   
 $T = 100.96'$   
 $L = 194.77'$

**TRAVERSE DATA**

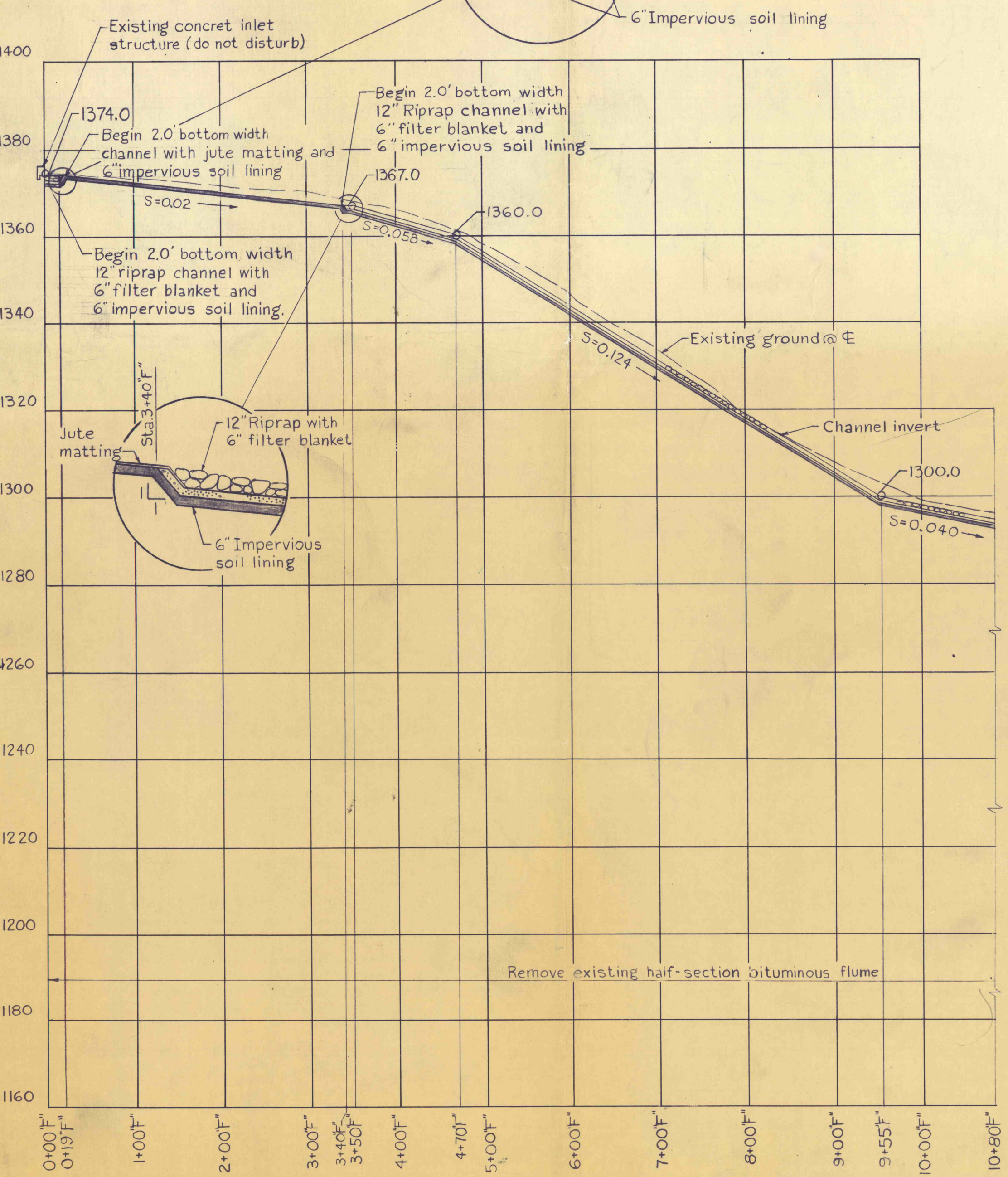
Traverse Station	Coordinates	
	North	East
0+00	486,582.00	2,384,368.00
2+41.13	486,687.20	2,384,151.03
4+18.55	486,744.51	2,383,983.12
13+44.26	486,513.70	2,383,086.55
20+26.67	486,027.01	2,382,608.07
24+21.16	485,896.66	2,382,235.69
27+74.05	485,923.49	2,381,883.81
31+65.20	485,793.58	2,382,252.75
35+24.44	485,825.91	2,382,610.50
41+57.96	486,017.04	2,383,214.44
45+37.48	486,088.65	2,383,587.10
51+69.57	486,450.90	2,384,105.00
54+63.47	486,582.00	2,384,368.00

**BENCH MARKS**

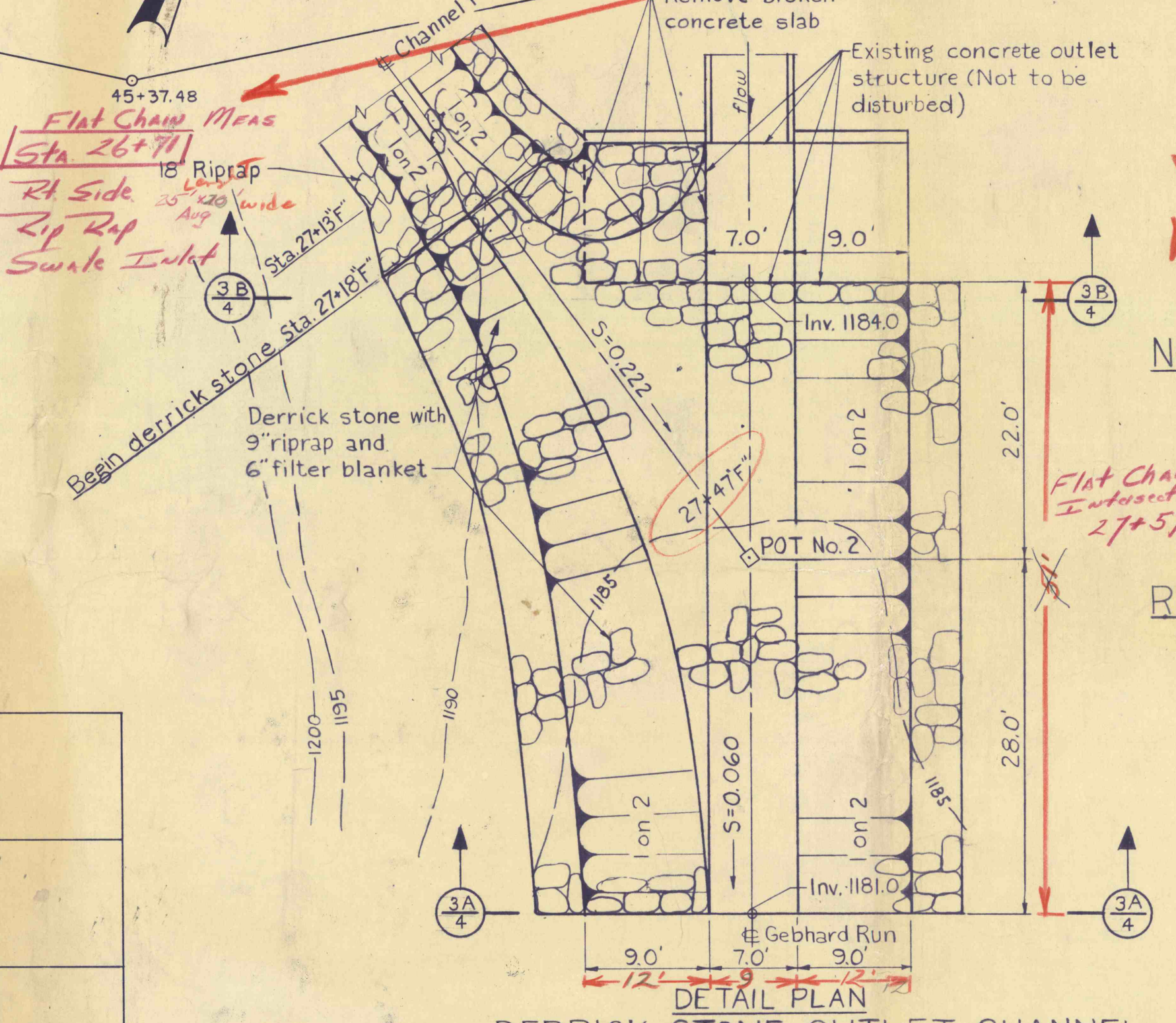
No.	Elevation	Location and description
1	1188.76	Drill hole in concrete headwall. Traverse Sta. 0+00
2	1375.76	X-Cut on concrete headwall. Traverse Sta. 27+74.05



**PLAN - CHANNEL "F"**  
 Scale: 1 in = 100 ft



**PROFILE - CHANNEL "F"**  
 Scale: Vert. 1 in = 20 ft.  
 Hor. 1 in = 100 ft.



**DERRICK STONE OUTLET CHANNEL**  
 Scale: 1 in = 10 ft.

- NOTES:**
- For General Notes, see Dwg. No. 2.
  - For detailed limits of access to the site, see Dwg. No. 2.

**REFERENCES:**

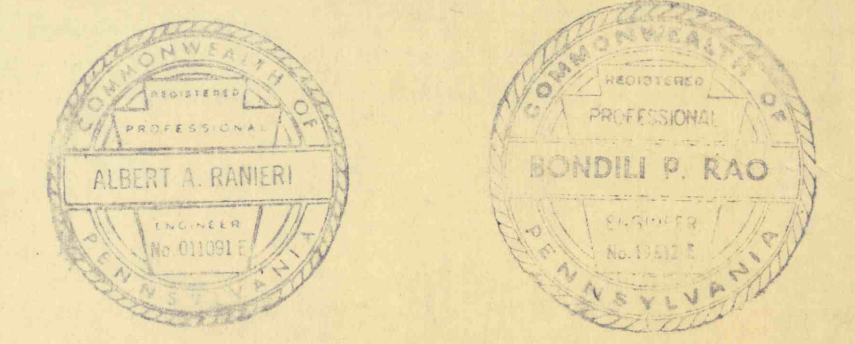
- Cross Sections ----- Dwg. No. 4

NO.	DATE	REVISION	APPR.

SUBMITTED *BPRao*  
 PROJECT CO-ORDINATOR

APPROVED *Albert A. Ranieri*  
 CHIEF - DIVISION OF MINE RECLAMATION

APPROVED *Anthony*  
 DIRECTOR - BUREAU OF DESIGN



COMMONWEALTH OF PENNSYLVANIA  
 DEPARTMENT OF ENVIRONMENTAL RESOURCES  
 OFFICE OF RESOURCES MANAGEMENT

**CONTRACT NO. SL 126-2-7/9F**

**MINE DRAINAGE POLLUTION ABATEMENT  
 REMEDIAL WORK  
 SWATARA CREEK WATERSHED**

FRAILEY AND REILLY TWP. SCHUYLKILL CO., PA.

**CHANNEL "F"  
 PLAN AND PROFILE**

DRAWN BY *LVC* DATE 25 May 78 DRAWING NO. 3 of 7  
 CHECKED BY *ECR* SCALE As shown