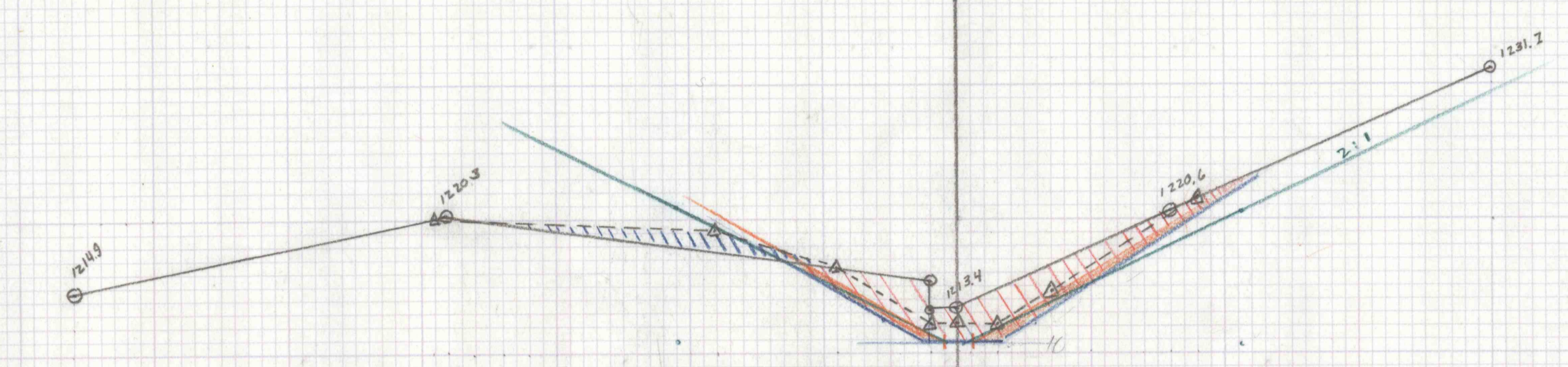
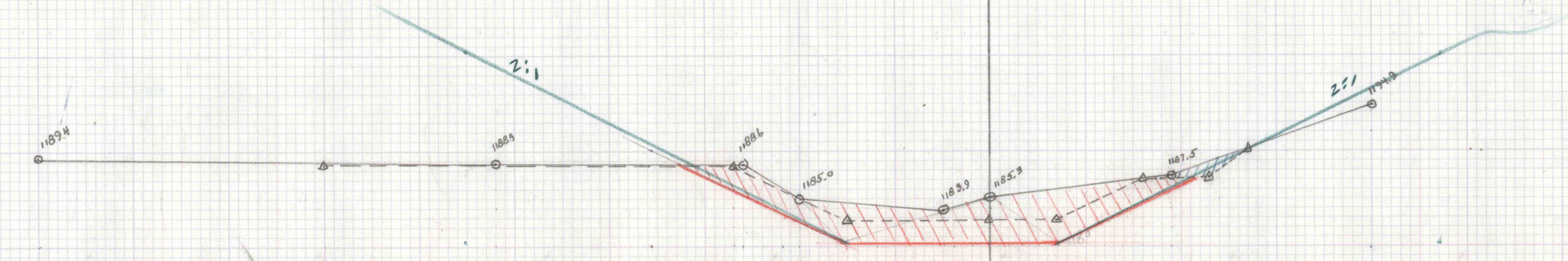


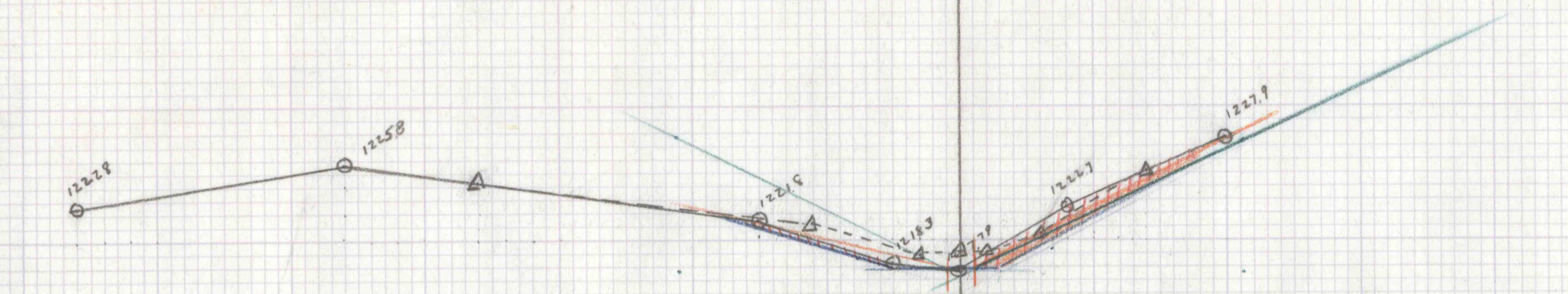
1241.5
21
1220.5
175
180



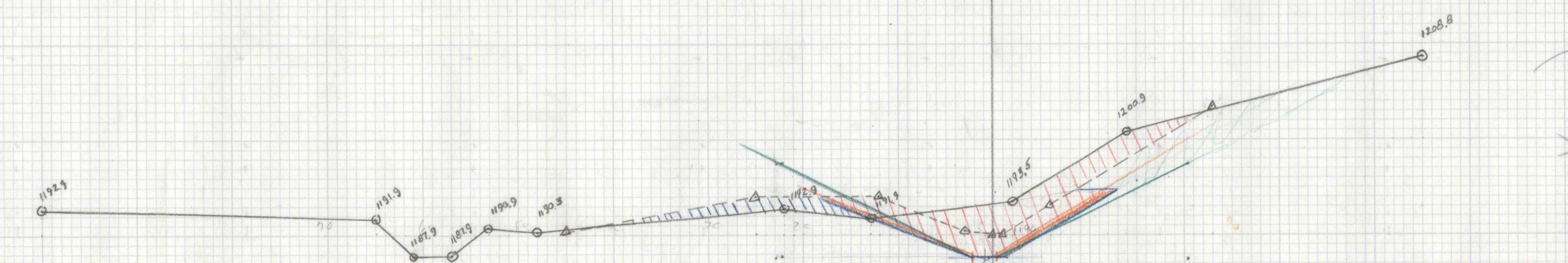
STA 25+50
1220
Fill 20'
Cut 50' after deduction for 2' Bot



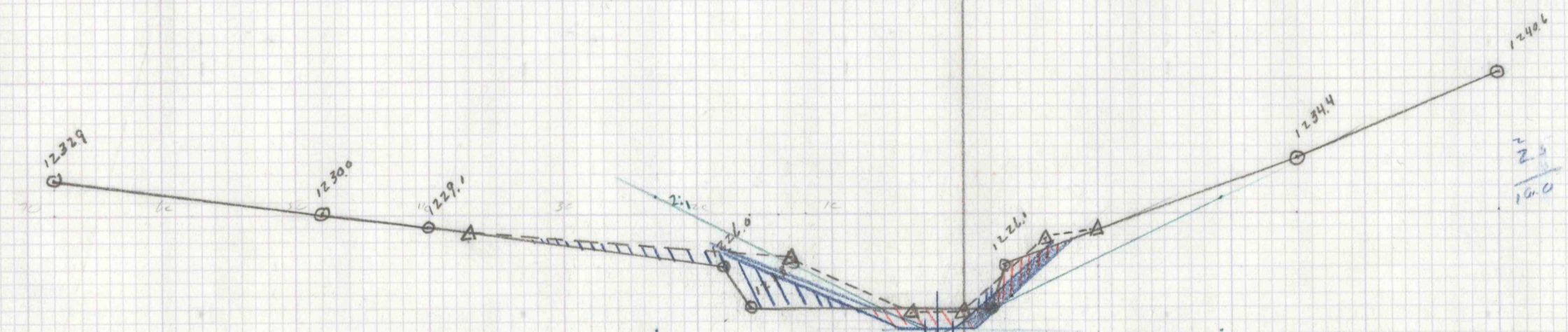
Sta 27+50
Cut 100'
Fill 8'



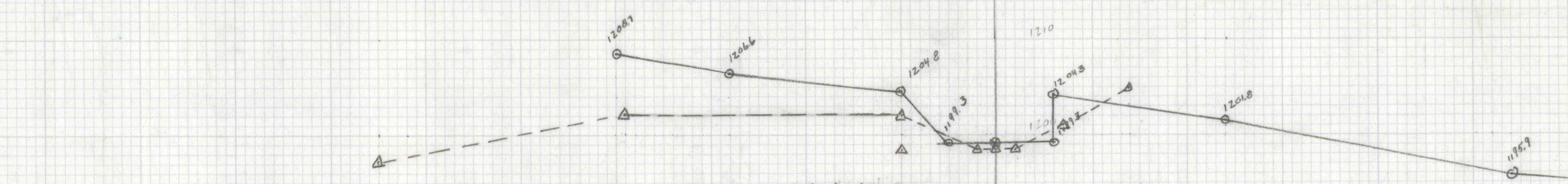
STA 25+00
1220
Cut 32'
-16 use 2' Bot =
16



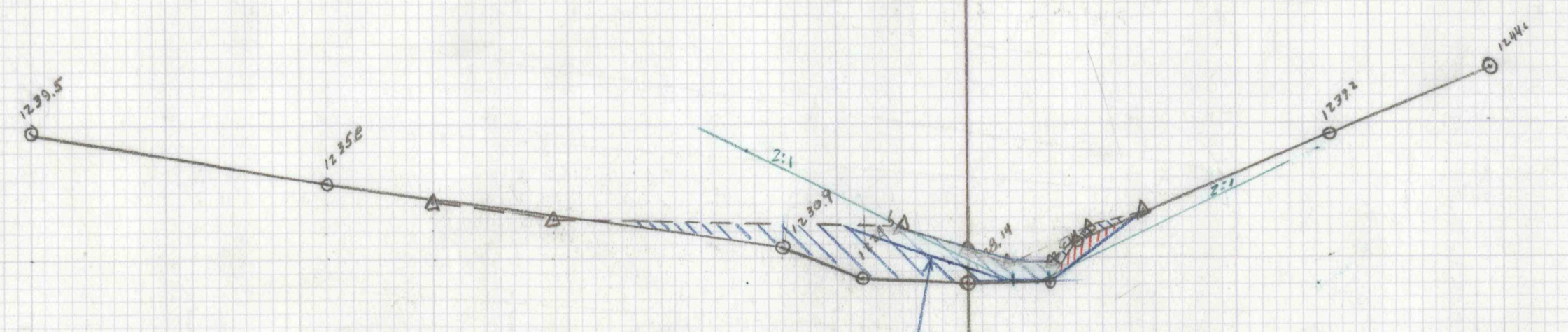
Station
Derrick Stone
Sta 21+00
1200
Cut 128'
-110
118'



Sta 24+50
1220
Fill 12'
Cut 20' using 2' Bottom
10'



Sta 26+50
1220

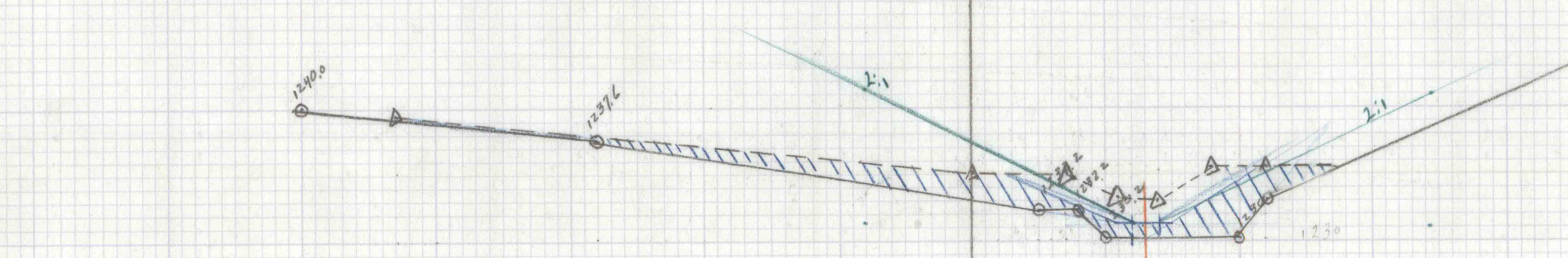


Sta 24+00
1230
Fill 44'
Cut 8'

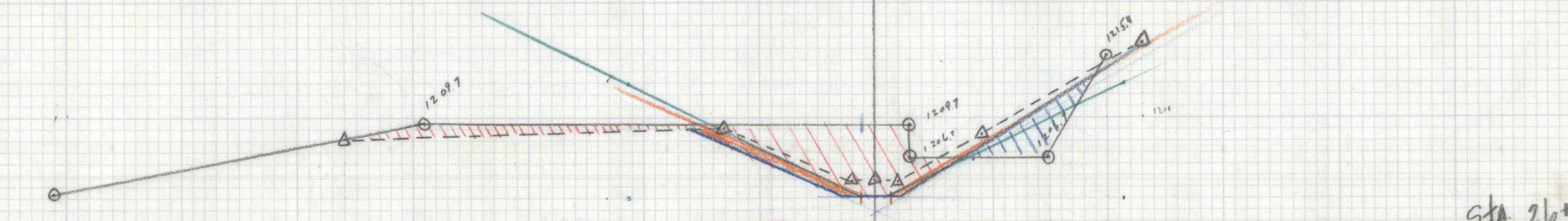
Sta 24+00
Begin 18" R.R.
Stop 12" R.R.
6" filter
6" lining

Void this Section
Final Elevation
IN QUESTION

3.5
11.0



Sta 23+50
1230
Fill 80'



Sta 26+00
1200
Cut 100' - 14 = 86'
Fill 18'

100
14
86

Sheet 6 of 6

1" = 10'
--- Prelim
--- Final
||||| Fill Areas
||||| Cut Areas

Sheet 6 of 6