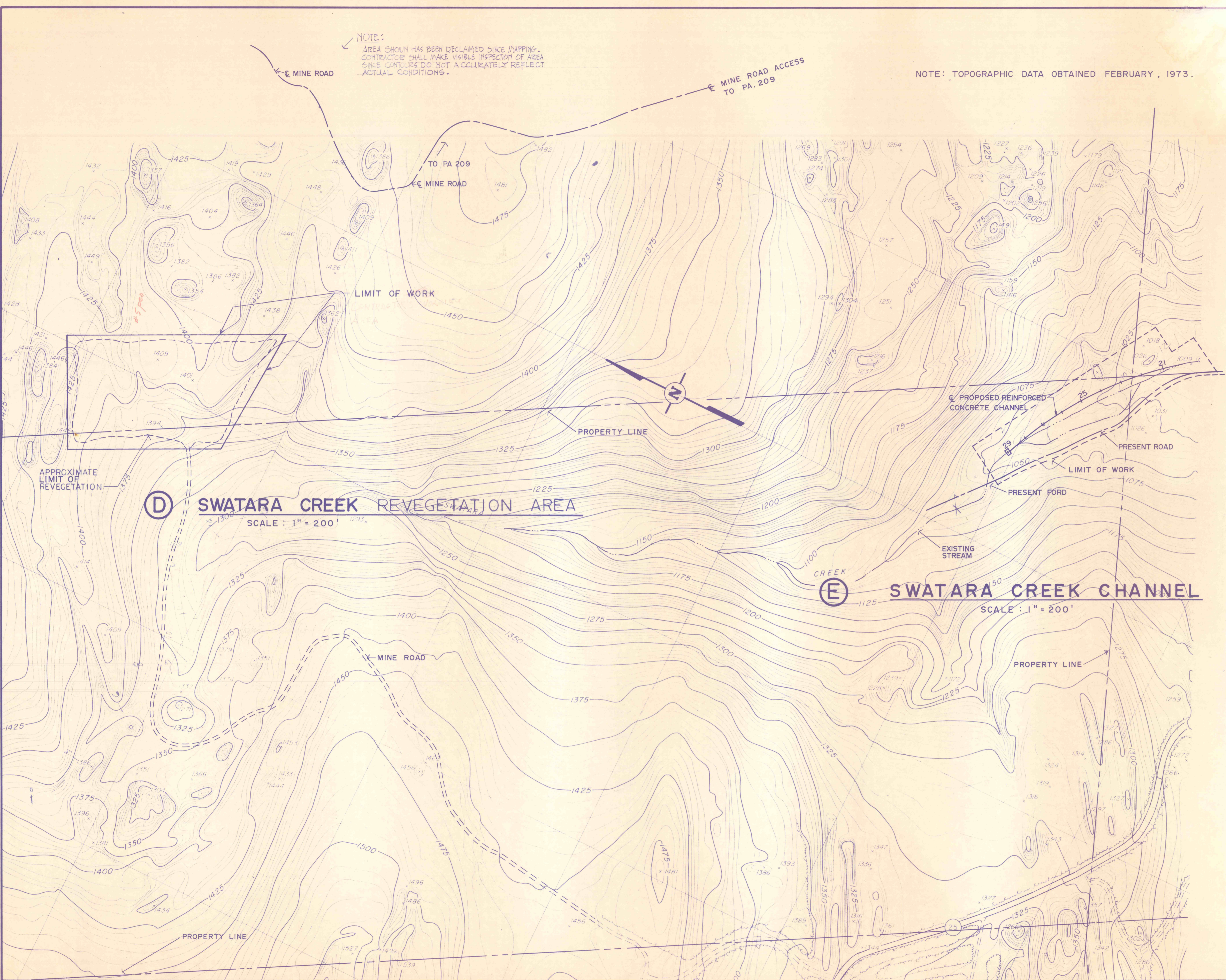


NOTE:  
 AREA SHOWN HAS BEEN DECLINED SINCE MAPPING.  
 CONTRACTOR SHALL MAKE VISIBLE INSPECTION OF AREA  
 SINCE CONTOURS DO NOT ACCURATELY REFLECT  
 ACTUAL CONDITIONS.

NOTE: TOPOGRAPHIC DATA OBTAINED FEBRUARY, 1973.



NOTE:  
 FOR PLAN & DETAILS OF PROPOSED  
 REINFORCED CONCRETE CHANNEL  
 SEE SHEETS 5 OF 9 AND 6 OF 9.

NO.	DATE	REVISION	APPR.

PROFESSIONAL  
 APPROVED  
 CHIEF - DIVISION OF MINE RECLAMATION  
 APPROVED  
 DIRECTOR - BUREAU OF DESIGN

COMMONWEALTH OF PENNSYLVANIA  
 DEPARTMENT OF ENVIRONMENTAL RESOURCES  
 OFFICE OF RESOURCES MANAGEMENT

PROJECT NO. SL-126-1-5  
 MINE DRAINAGE POLLUTION ABATEMENT  
 SWATARA CREEK WATERSHED  
 SCHUYLKILL COUNTY, PENNSYLVANIA

NICHOLAS-COWLEY-BROSCH ASSOC., INC.  
 Consulting Engineers  
 3300 North Third St. Harrisburg, Pa.

UPPER SWATARA CREEK PLAN

DRAWN BY BEN	DATE Jan. 11, 1974	DRAWING NO. 4 of 9
CHECKED BY HPC	SCALE 1" = 200'	