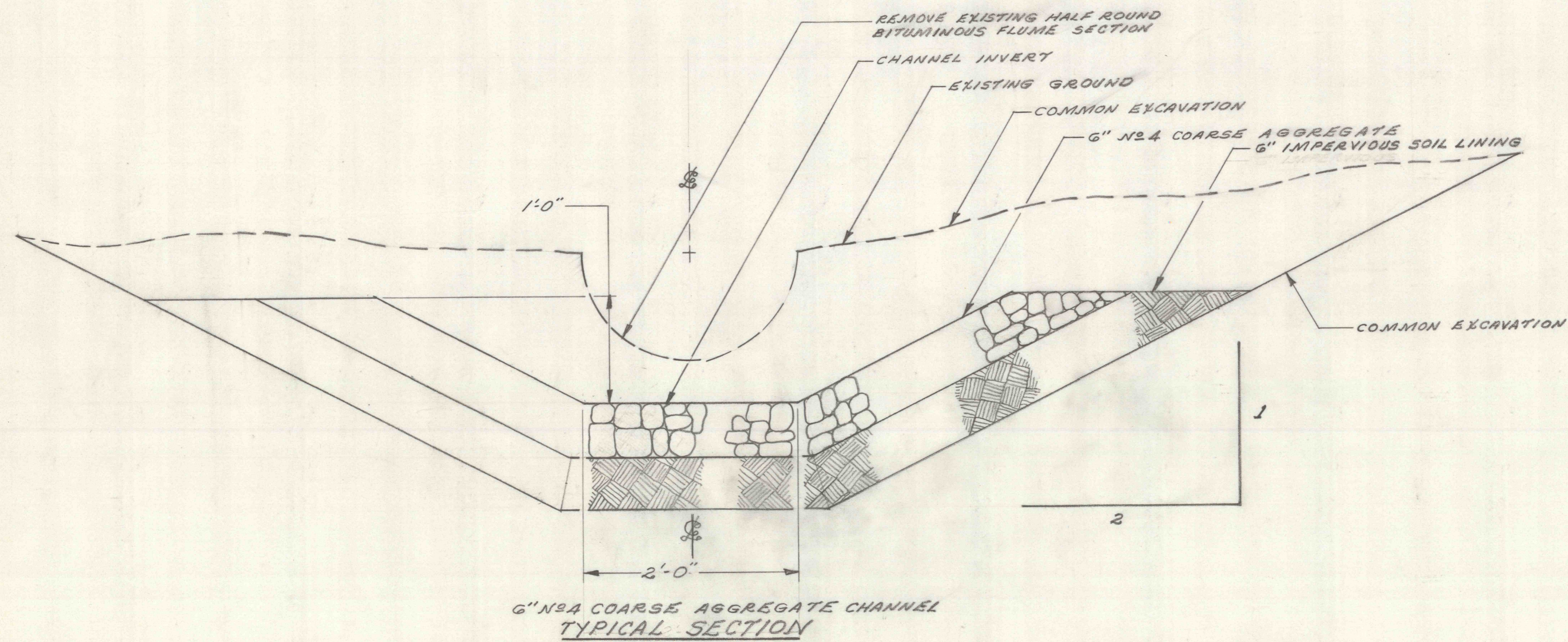


TYPICAL 12" RIPRAP CHANNEL

SCALE: 1/2" = 1'-0"



6" NO. 4 COARSE AGGREGATE CHANNEL
TYPICAL SECTION

CONTRACT NO SL126-2-7/9F

SWATARA CREEK WATERSHED

| | | |
|-------------------------|-----------------------|--------------------|
| DRAWN BY J.M. JR. 2. | DATE NOV. 13, 1978 | REFERENCE DWG. NO. |
| CHECKED BY | SCALE 1/2" = 1'-0" | 5 OF 7 |