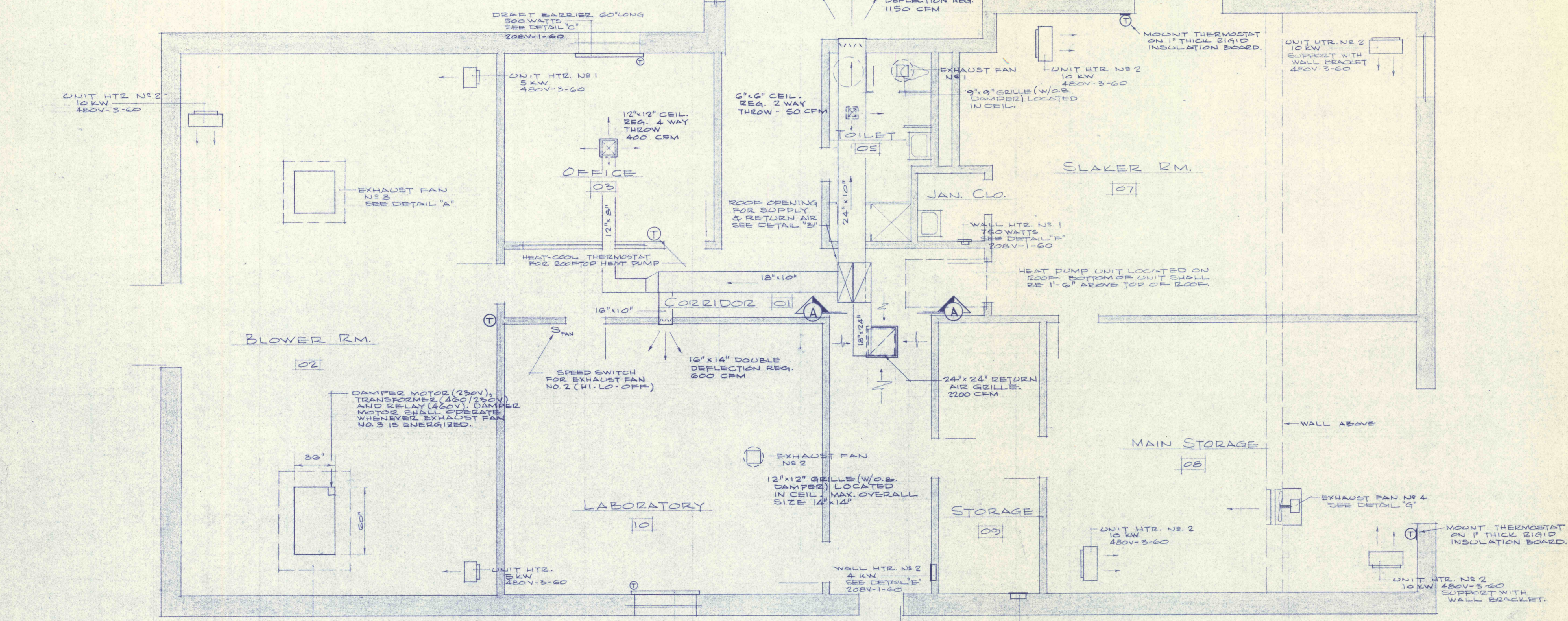
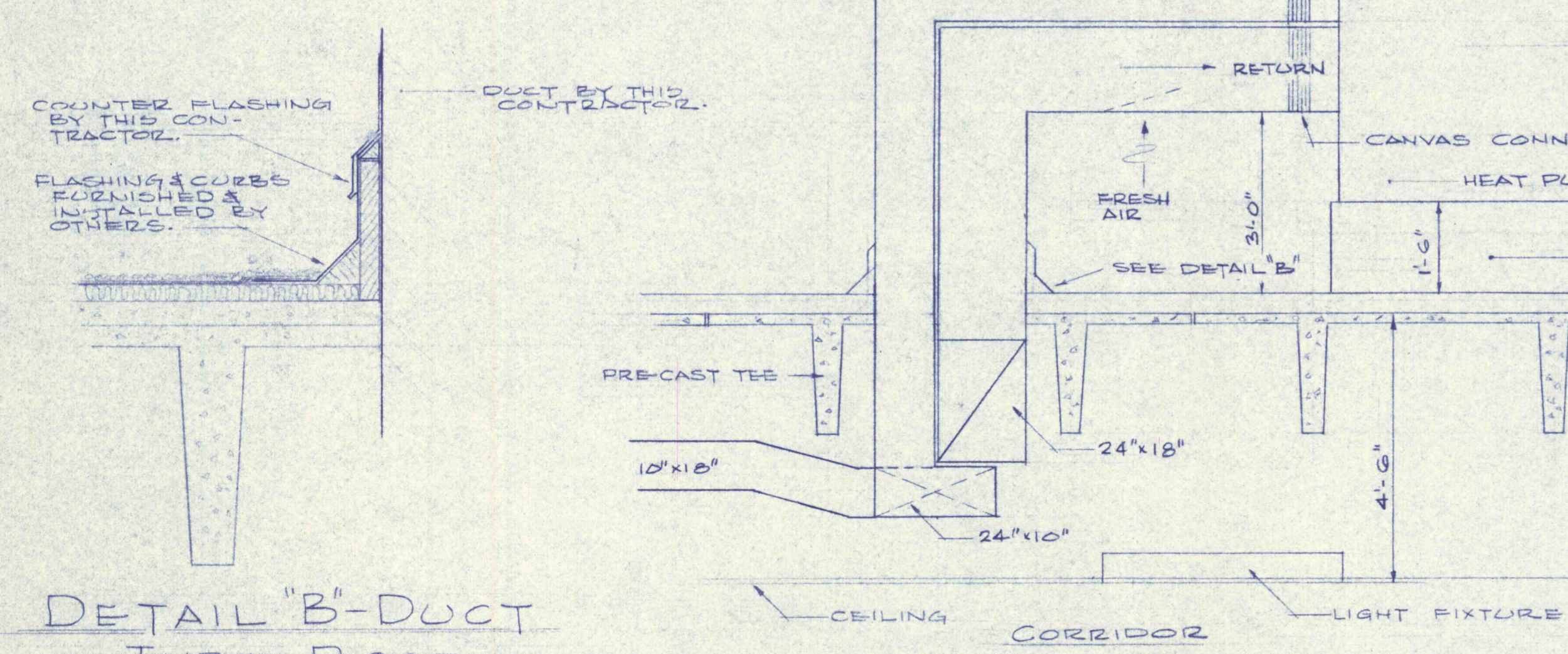


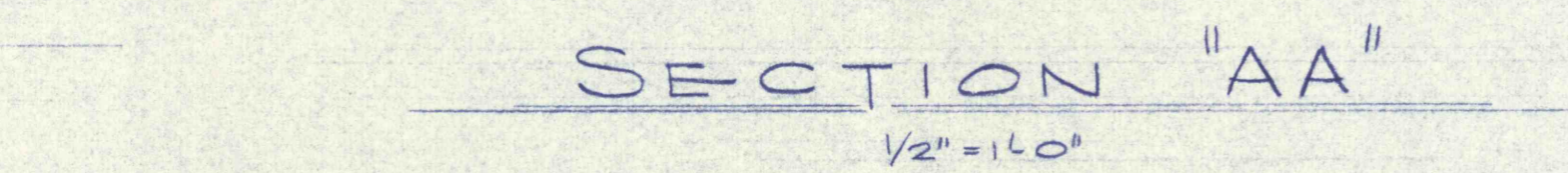
DETAIL "A" - PREFABRICATED CORB  
1/2" = 1'-0"



FLOOR PLAN  
1/4" = 1'-0"



DETAIL "B" - DUCT THRU ROOF  
1/4" = 1'-0"



SECTION "AA"  
1/2" = 1'-0"

EXHAUST FANS

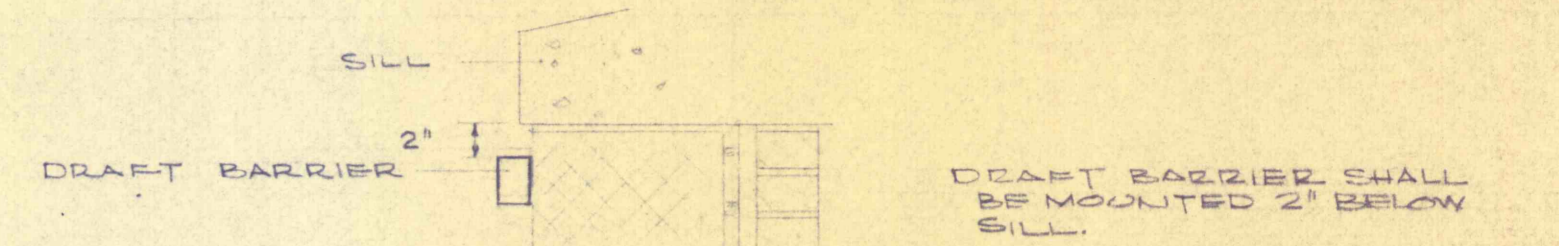
- NO. 1 CENTRIFUGAL ROOF EXHAUSTER, DIRECT DRIVE, SINGLE SPEED, 200 CFM - 250 CFM 1/2" S.P. 1/20 HP CONTROL WITH LIGHT CIRCUIT 115V-1-60
- NO. 2 CENTRIFUGAL ROOF EXHAUSTER, DIRECT DRIVE, TWO SPEED, 600/2700 CFM 1750/1150 RPM 1/4" S.P. 1/8 HP FURNISH WITH 41-LO-OFF SELECTOR SWITCH 115V-1-60
- NO. 3 PROPELLER TYPE BELT DRIVEN POWER ROOF VENTILATOR, TWO SPEED, 10,000/4550 CFM 1575/380 RPM FAN SPEED 1/2 HP 460V-3-60
- NO. 4 PROPELLER TYPE BELT DRIVEN WALL FAN, SINGLE SPEED, 6000 CFM 1/2 HP 460V-3-60
- NO. 5 CENTRIFUGAL ROOF EXHAUSTER, DIRECT DRIVE, SINGLE SPEED, 1000 CFM - 1100 CFM 1/4" S.P. 1/8 HP 230V-1-60
- NO. 6 CENTRIFUGAL WALL EXHAUSTER, DIRECT DRIVE, SINGLE SPEED, 235 CFM - 1750 CFM 1/8" S.P. 1/2 HP 115V-1-60

HEAT PUMP UNIT

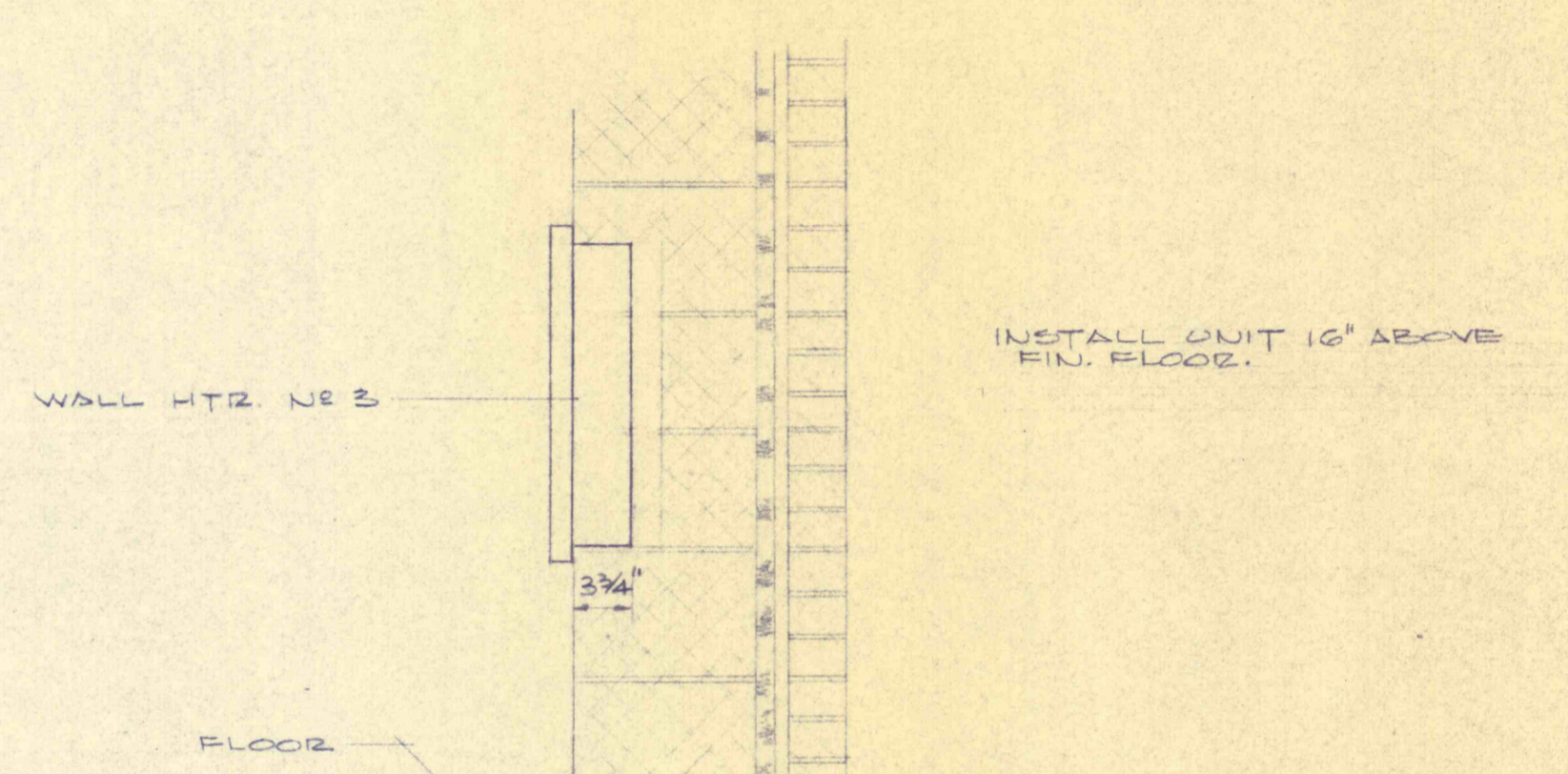
COOLING LOAD - TOTAL LOAD 70,800 BTU/HZ  
 UNIT SHALL BE EQUIPPED WITH  
 AIR ENT. INDOOR COIL - 80°F DB, 67°F WB  
 AIR ENT. OUTDOOR COIL - 95°F DB  
 HEATING LOAD - TOTAL LOAD 74,000 BTU/HZ  
 UNIT SHALL BE EQUIPPED WITH  
 15 KW ACCESSORY STRIP HTR.  
 AIR ENT. OUTDOOR COIL - 55°F DB  
 AIR ENT. INDOOR COIL - 60°F DB  
 INDOOR FAN - 2200 CFM 3/4 HP, .5' EXT. SP  
 UNIT SHALL BE 460V-3-60

NOTES

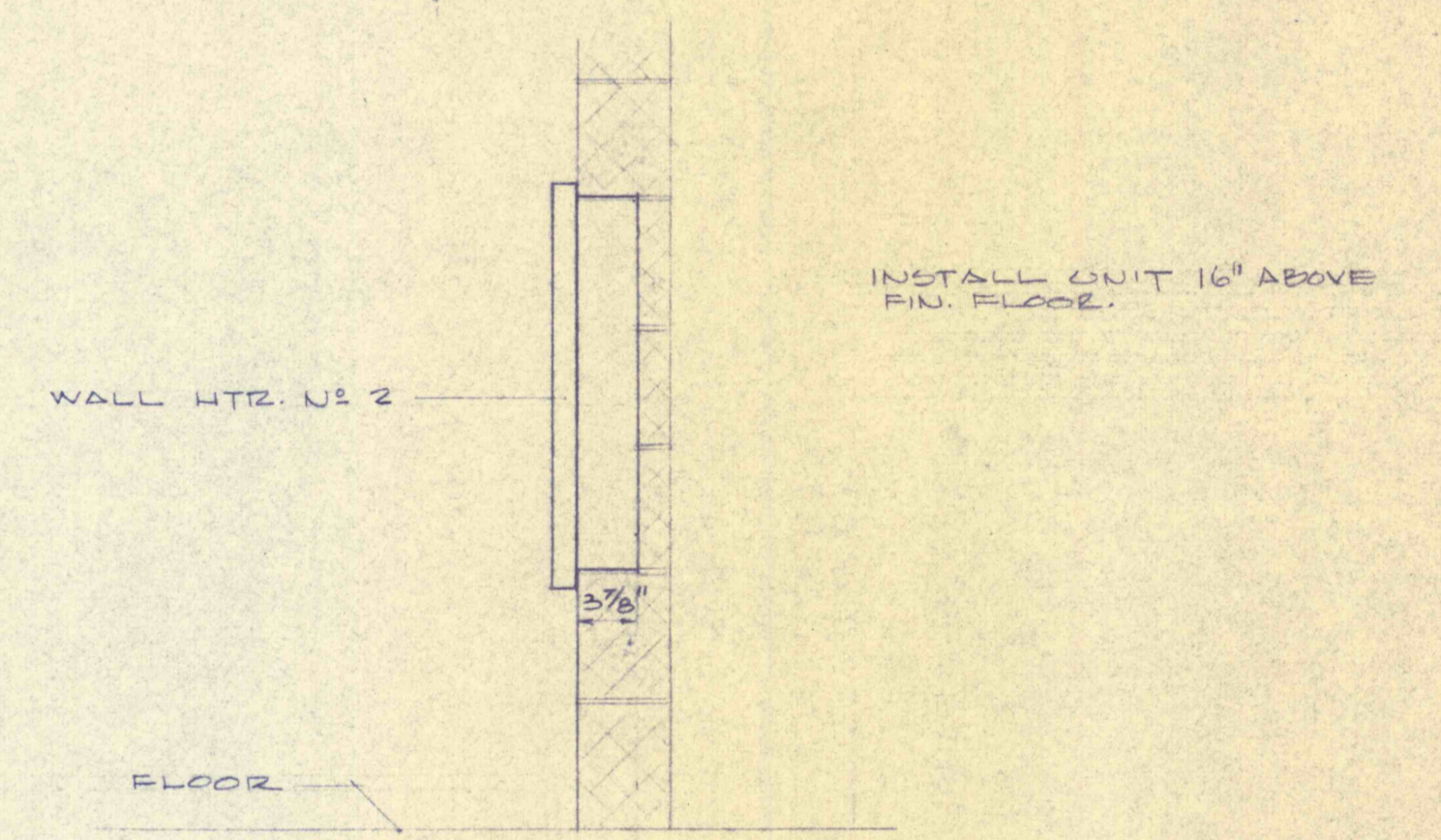
1. THIS CONTRACTOR SHALL FURNISH GENERAL CONTRACTOR WITH EXACT LOCATIONS AND DIMENSIONS OF ALL OPENINGS REQUIRED IN WALLS AND ROOFS FOR INSTALLATION OF EQUIPMENT FURNISHED UNDER THIS CONTRACT.
2. SUPPORT UNIT HEATERS FROM CONCRETE TEES USING EITHER HANGERS OR CEE WITH TEES, OR THRU BOLT AND WASHER SECURED THRU CONCRETE TEES. SUPPORT SHALL BE INSTALLED IN EACH A MANNER AS TO IN NO WAY IMPAIR THE STRUCTURAL CHARACTERISTICS OF THE TEES, WHICH INDICATED ON DWGS. UNIT HEATERS ARE SUSPENDED FROM WALL USING WALL BRACKETS, MFR. BY SAME MFR. AS UNIT HEATERS.
3. ALL REGISTERS & GRILLES SHALL BE FINISHED WITH OPPOSED BLADE VOLUME CONTROL DAMPERS.



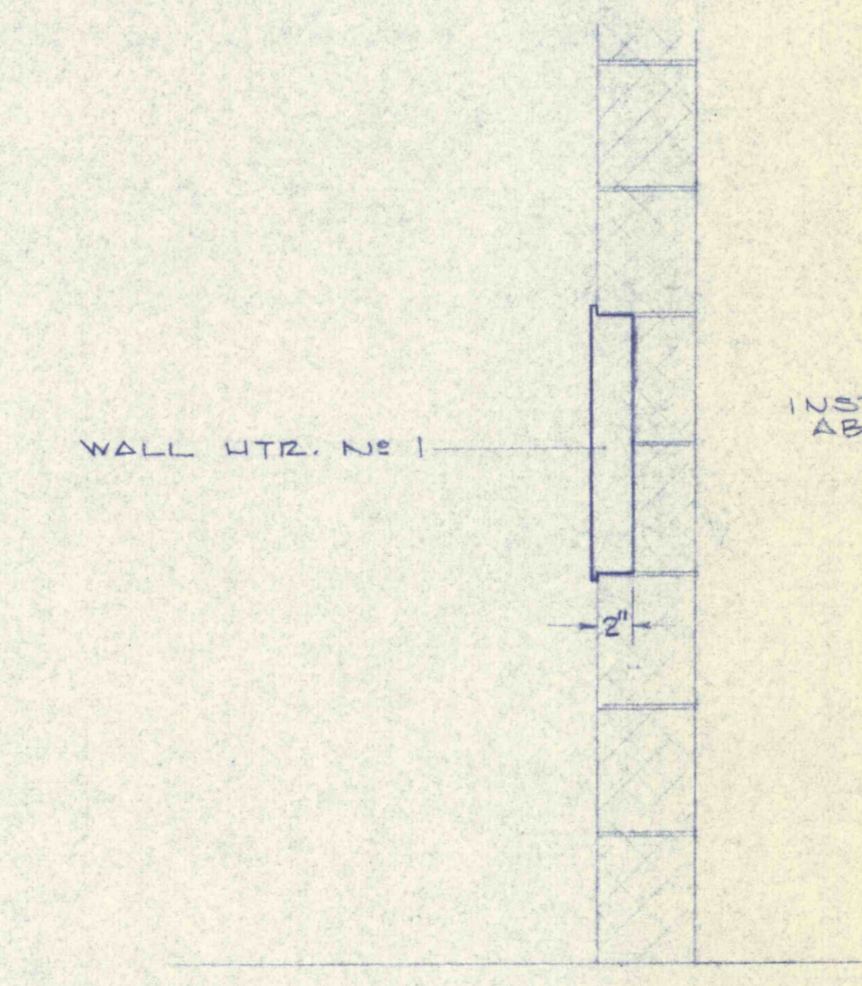
DETAIL "C" - DRAFT BARRIER  
1/2" = 1'-0"



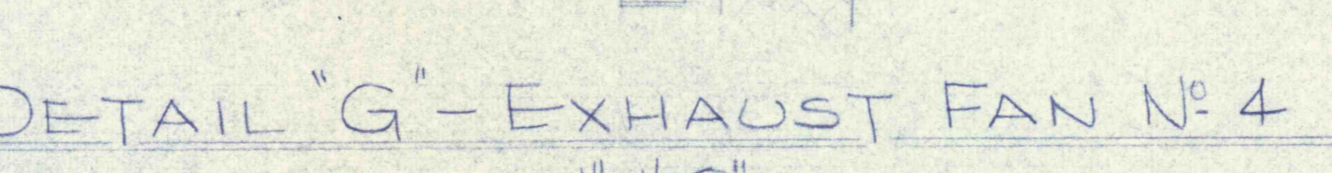
DETAIL "D" - WALL HTR. NO. 3  
1/2" = 1'-0"



DETAIL "E" - WALL HTR. NO. 2  
1/2" = 1'-0"



DETAIL "F" - WALL HTR. NO. 1  
1/2" = 1'-0"



DETAIL "G" - EXHAUST FAN NO. 4  
1/2" = 1'-0"

- (T) THERMOSTAT - WALL MOUNTED TYPE WITH BELLWELL-OPERATED MERCURY SWITCH (SPST), ADJUSTABLE SET POINT RANGE (40°F TO 80°F) WITH A TWO DEGREE DIFFERENTIAL, A THERMOMETER IN COVER, AND SHALL FUNCTION TO CLOSE CONTROL CIRCUIT ON A TEMPERATURE FALL BELOW SET POINT.
  - (TW) THERMOSTAT - SAME AS (T) EXCEPT THE ADJUSTABLE SET POINT RANGE SHALL BE 60°F TO 100°F, 120 VOLT.
  - (H) HUMIDISTAT - WALL MOUNTED TYPE WITH A HUMAN HAIR ELEMENT COUPLED TO A MERCURY SWITCH (SPST), ADJUSTABLE SET POINT RANGE (20% TO 80% RELATIVE HUMIDITY) WITH A THREE PERCENT DIFFERENTIAL AND SHALL FUNCTION TO CLOSE CONTROL CIRCUIT ON A RELATIVE HUMIDITY RISE ABOVE THE SET POINT, 120 VOLT.
- A SEPARATE 120V CONTROL CIRCUIT FOR OPERATION OF UNIT HEATERS IN CONTROL BUILDING WILL BE PROVIDED BY ELECTRICAL CONTRACTOR. CONTRACTORS FOR UNIT HEATERS IN OUTLYING STRUCTURES SHALL BE PROVIDED WITH 120V CONTROL CIRCUIT TRANSFORMERS.

REVISIONS	
<b>CONTROL BUILDING HVAC PLAN</b>	
CONSTRUCTION OF TREATMENT FACILITIES OF ACID MINE DRAINAGE SCHUYLKILL COUNTY, PENNSYLVANIA	JOB NO: 6805 DATE: NOV 1961 SCALE: AS NOTED DRAWN: M.D.C. APPROVED:
ANTHRACITE RESEARCH & DEVELOPMENT CO. INC. CONSULTING ENGINEERS POTTSVILLE, PENNSYLVANIA	TAMAQUA <b>HV-21</b>