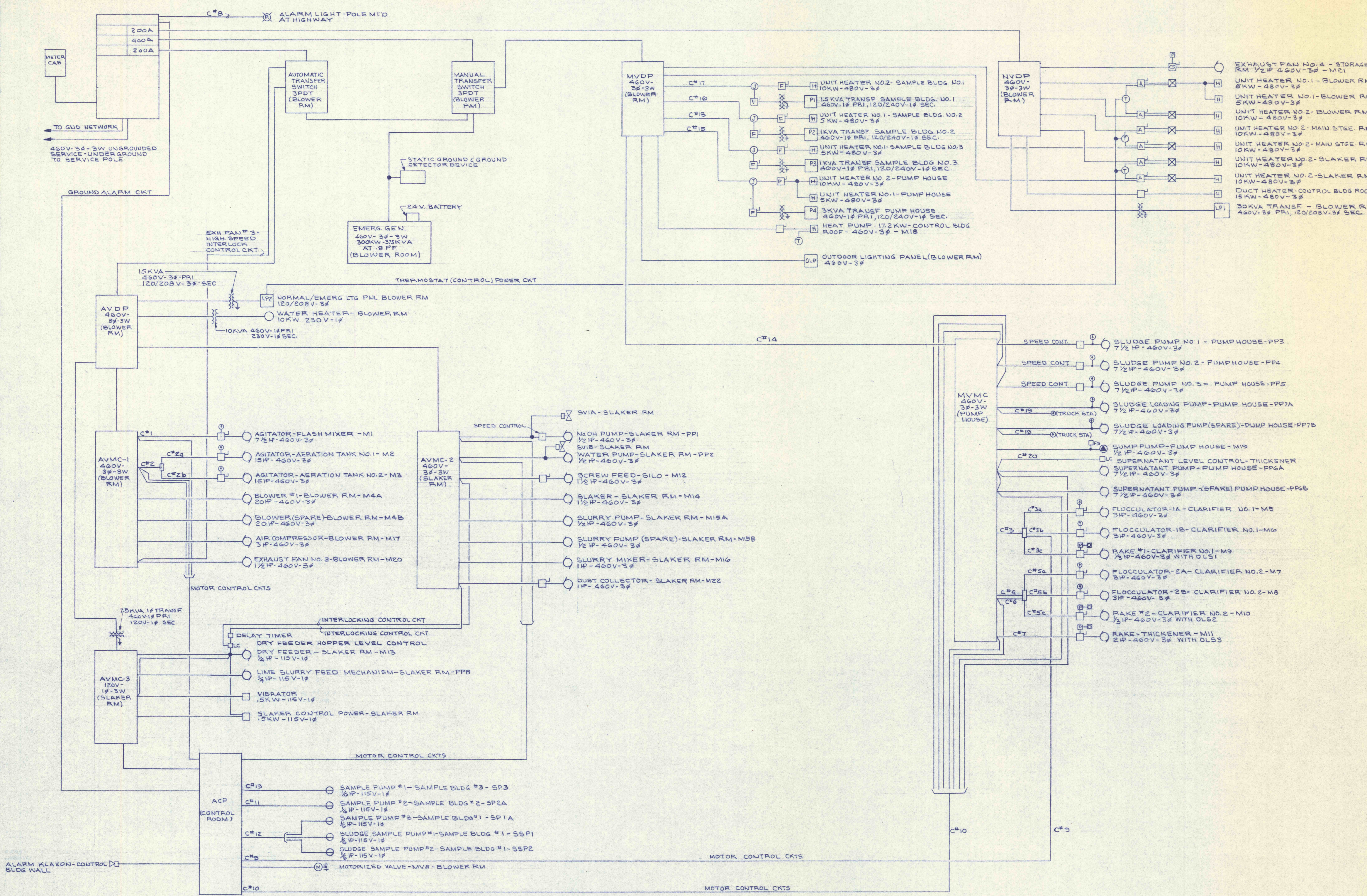
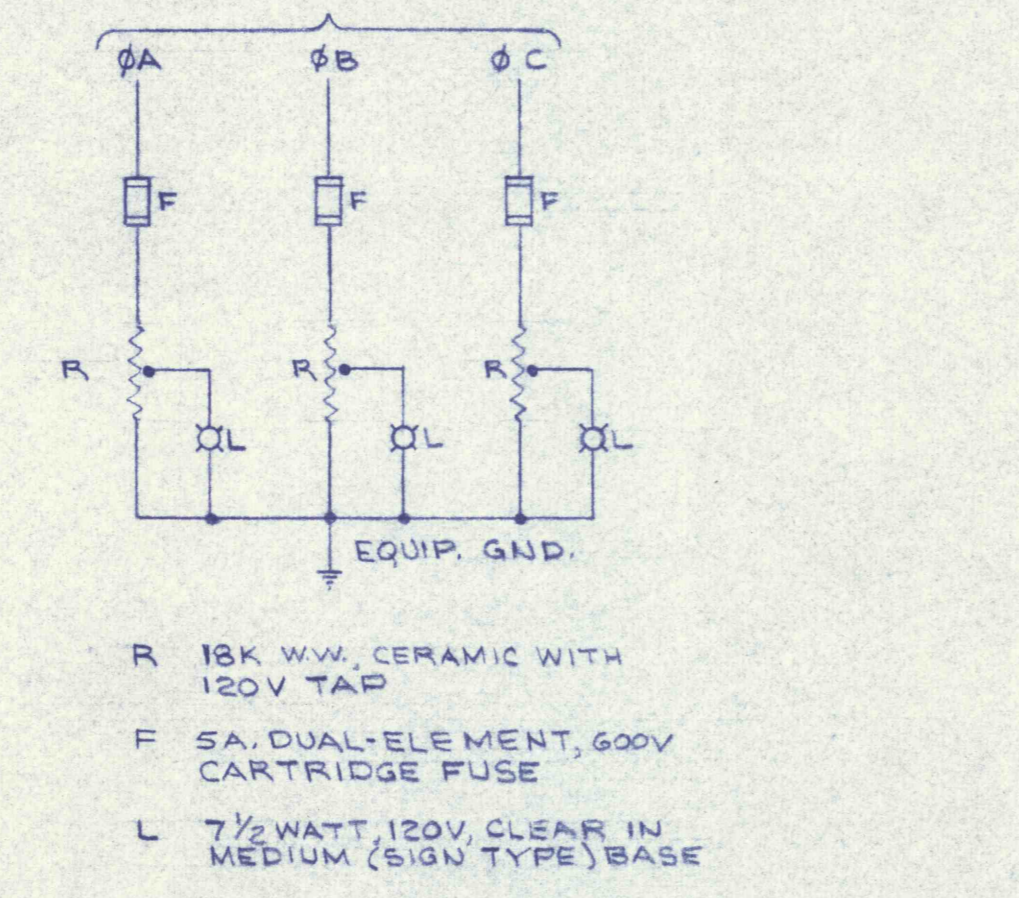
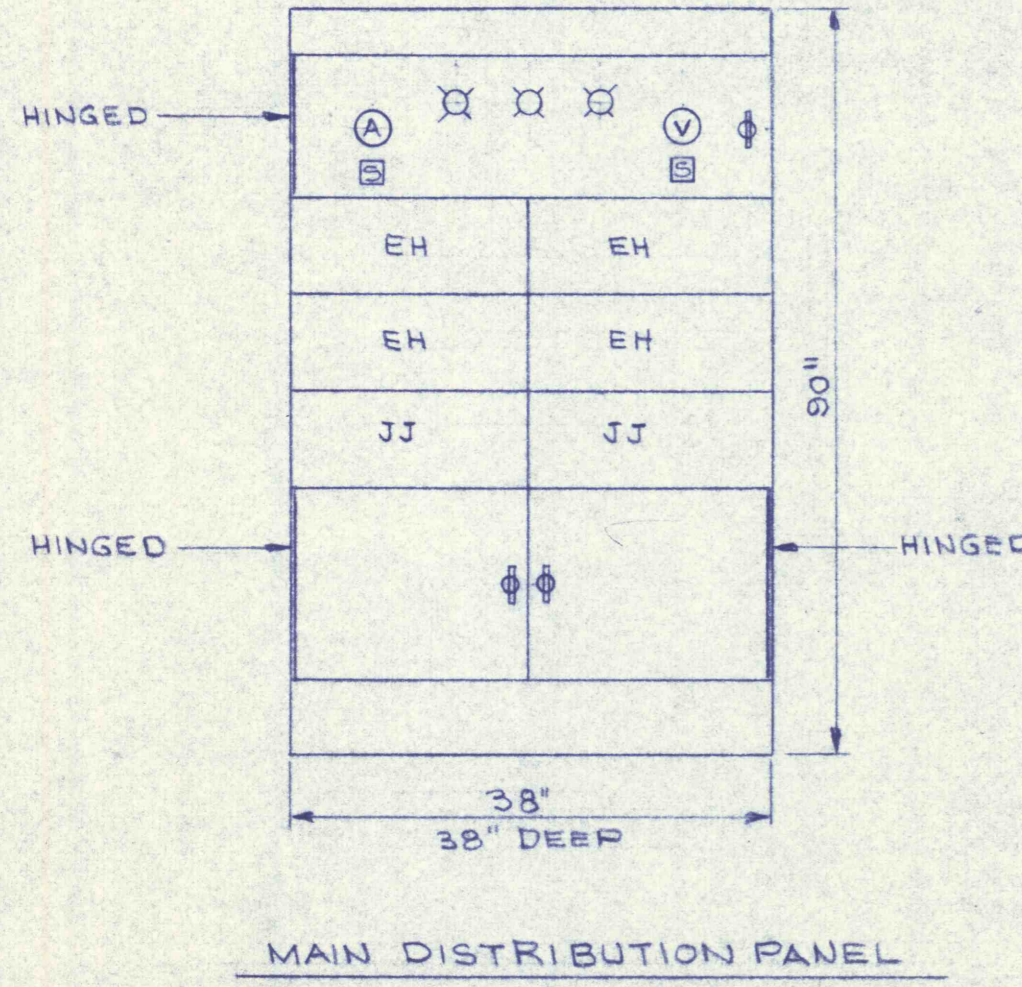


LEGEND

- MOTOR, HP AS NOTED
- DRY TYPE TRANSFORMER
- DISC SW WITH AUX. CONTACT FOR CONTROL CKT
- COMBINATION STARTER, FUSED.
- DISCONNECT SWITCH, UNFUSED.
- PUSH BUTTON, START-STOP
- 2-POS. SEL. SW., SAFE-RUN
- THERMOSTAT
- JUNCTION BOX
- CONTACTOR
- ⊕ 15A 600V GROUNDING RECEPTACLE (WITH CAP)
- ⊕ ELECTRIC HEATER
- DISCONNECT SWITCH, FUSED
- FS FLOAT SWITCH
- LIGHT FIXTURE (WITH COLOR INDICATOR)
- KLAXON
- OVERLOAD SWITCH
- LC LEVEL CONTROLLER
- SOLENOID VALVE
- ⊕ BUTTERFLY VALVE, MOTORIZED
- ⊕ SQUEEZE VALVE, MOTORIZED
- PP DENOTES PROCESS PUMP MOTOR
- M DENOTES MOTOR
- SP DENOTES SAMPLE PUMP MOTOR
- SSP DENOTES SLUDGE SAMPLE PUMP MOTOR



NOT SHOWN ON THIS RISER DIAGRAM
 1. INSTRUMENTATION CONNECTIONS TO PROCESS INSTRUMENTS, TRANSDUCERS, TRANSMITTERS, ETC.
 2. INSTRUMENTATION CONNECTIONS TO SPEED CONTROLS FOR PP1, PP3, PP4, PP5.



STATIC GROUND & GROUND DETECTOR FOR MAIN SERVICE EQUIP. & EMERG. GEN. UNIT

REVISIONS	
ELECTRICAL RISER DIAGRAM	
CONSTRUCTION OF TREATMENT FACILITIES FOR ACID MINE DRAINAGE RAUSCH CREEK WATERSHED SCHUYLKILL COUNTY, PENNSYLVANIA	
JOB NO: 6805	DATE: NOV. 1969
SCALE: NONE	DRAWN: WNU
APPROVED:	
RESEARCH & DEVELOPMENT CO. INC. CONSULTING ENGINEERS POTTSDALE, PENNSYLVANIA	TAMAQUA
DRAWING NO: E-3	