

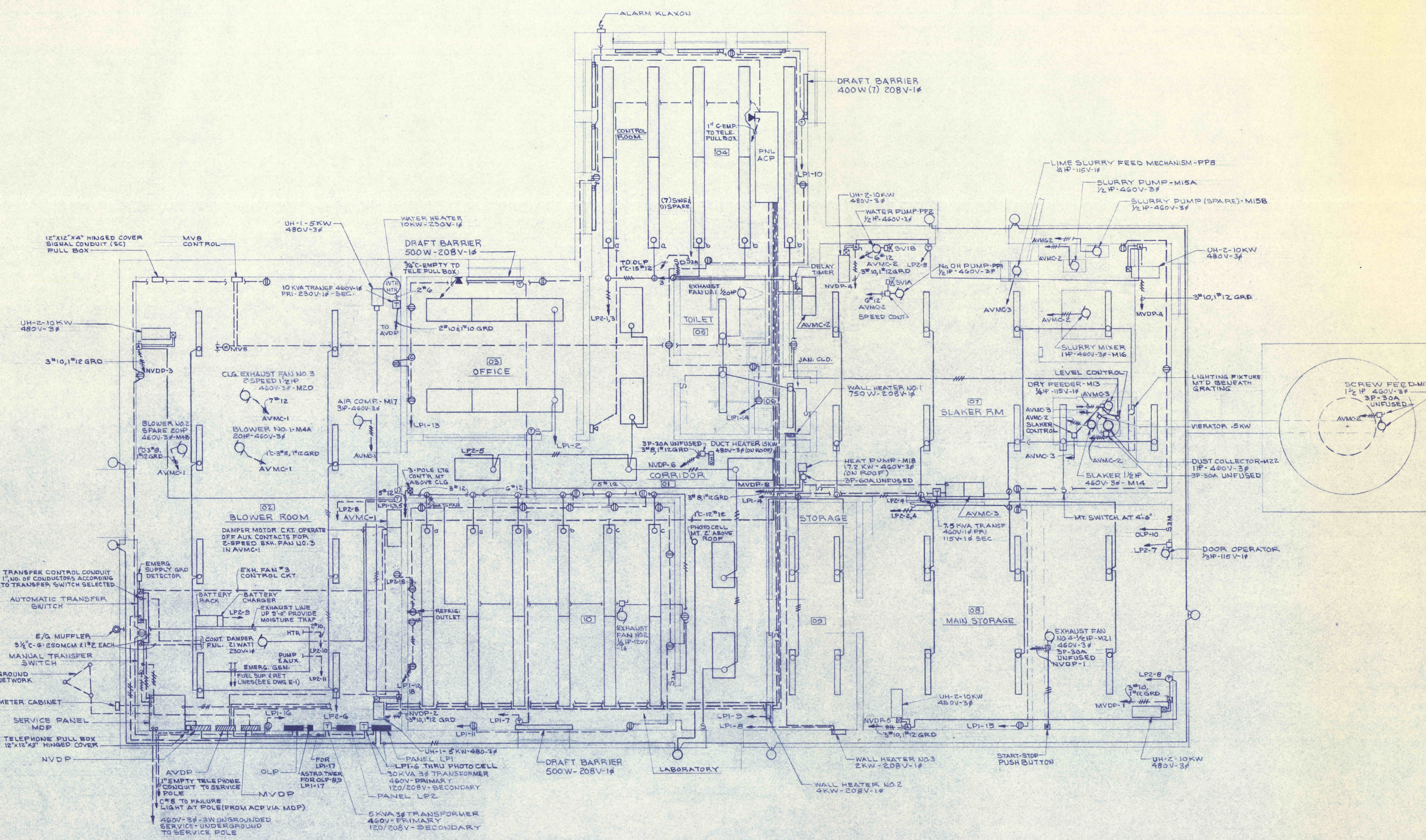
ELECTRICAL SYMBOLS

- FLUORESCENT LIGHTING FIXTURE
- WALL MTD INCANDESCENT LIGHTING FIXTURE
- CEILING MTD INCANDESCENT LIGHTING FIXTURE
- S SINGLE POLE SWITCH
- SPAN THREE SPEED SWITCH (FURN. WITH FAN)
- ⊖ THERMOSTAT
- ⊕ JUNCTION BOX
- ⊖ SINGLE RECEPTACLE 15A-125V-1ϕ-W/GND
- ⊖ CLOCK OUTLET
- ⊖ TELEPHONE OUTLET
- ⊖ CONTACTOR
- ⊖ COMBINATION STARTER & DISCONNECT SWITCH
- ⊖ MOTOR HP AS NOTED
- ⊖ ELECTRIC DUCT HEATER
- ⊖ DRY TYPE TRANSFORMER
- ⊖ DISCONNECT SWITCH
- ⊖ DISC. SW. WITH AUX. CONTACT FOR CONTROL CKT.
- 3SM THREE-WAY SWITCH, MOMENTARY, CENTER OFF
- SO DOUBLE POLE SWITCH
- SWP SINGLE POLE SWITCH-WEATHER PROOF
- ⊖ SINGLE RECEPTACLE 15A-125V-1ϕ W/GND LOCK-IN TYPE
- ⊖ THERMOSTAT-HUMIDISTAT
- ⊖ HUMIDISTAT
- ⊖ DISCONNECT SWITCH, FUSED

LIGHTING FIXTURE SCHEDULE

TYPE	DESCRIPTION	WHERE USED
A	1/1000 WATT MERCURY VAPOR FIXTURE FULLY WEATHER PROOF WITH CLEAR GLASS LENS, 460V CONSTANT WATTAGE BALLAST, ALKAL REFLECTOR, POLE MTD	HEADWORKS, DRIVEWAY
B	1/1200 WATT MERCURY VAPOR FIXTURE FULLY WEATHER PROOF WITH CLEAR GLASS LENS, 460V CONSTANT WATTAGE BALLAST, ALKAL REFLECTOR, POLE MTD	FLASH MIXER, DRIVEWAY AERATION TANKS, CLARIFIERS & SLUDGE THICKENER
C	1/250 WATT MERCURY VAPOR FIXTURE FULLY WEATHER PROOF W/OPAL ACRYLIC LENS, ALUM. REFLECTOR, 460V CONSTANT WATTAGE BALLAST, CURVED TOP MTD 18"	DRIVEWAY
D	1/175 WATT MERCURY VAPOR FIXTURE FULLY WEATHER PROOF W/OPAL ACRYLIC LENS, ALUM. REFLECTOR, 460V CONSTANT WATTAGE BALLAST, CURVED TOP MTD 18"	PARKING AREA
E	2/100 WATT R 5 RECESSED 2'x4' FLUOR. LTA FIXTURE WITH HFF BALLAST, ACRYLIC LENS	CORRIDOR 01
F	1/200 WATT R 5 RECESSED 2'x4' FLUOR. LTA FIXTURE WITH HFF BALLAST, ACRYLIC LENS	OFFICE 03
G	2/100 WATT R 5 RECESSED 2'x4' FLUOR. LTA FIXTURE WITH HFF BALLAST, ACRYLIC LENS	BLOWER RM 02, JANITOR CLOSET 04, SLAKER RM 07, MAIN STORAGE 08, STORAGE 09
H	1/140 WATT R 5 SURFACE MTD 2' FLUOR. LTA FIXTURE WITH HFF BALLAST, ACRYLIC LENS	TOILET 05
J	2/250 WATT R 5 SURFACE MTD 8' FLUOR. LTA FIXTURE WITH H.O. LAMP, HFF BALLAST, ACRYLIC LENS	CONTROL RM 04, LABORATORY 10
K	1/100 WATT WALL MTD INCANDESCENT LTA FIXTURE VAPOR TIGHT CAST ALUMINUM, WITH TAPERED WHITE GLASS GLOBE & ALUMINUM GUARD	EXTERIOR DOORS
L	1/1200 WATT WALL MTD INCANDESCENT LTA FIXTURE VAPOR TIGHT CAST ALUMINUM, WITH CLEAR GLASS GLOBE & ALUMINUM GUARD	SAMPLE BLDG 12&13 PUMP HOUSE
M	1/150 WATT WALL MTD INCANDESCENT LTA FIXTURE VAPOR TIGHT CAST ALUMINUM, WITH CLEAR GLASS GLOBE & ALUMINUM GUARD	EXTERIOR DOOR AT PUMP HOUSE WELL PUMP PIT

- ### NOTES:
- ELECTRICAL CONTRACTOR SHALL FURNISH THE GENERAL CONTRACTOR WITH EXACT LOCATIONS AND DIMENSIONS OF ALL OPENINGS & RISERS IN WALLS AND ROOF FOR INSTALLATION OF EQUIPMENT FURNISHED UNDER THIS CONTRACT.
 - SUPPORT LIGHTING FIXTURES USING THRU BOLTS AND WAFERS SECURED THRU CONCRETE TEES. SUPPORTS SHALL BE INSTALLED IN SUCH A MANNER AS TO NOT WEAKEN OR IMPAIR THE STRUCTURAL CHARACTERISTICS OF THE TEES.
 - ALL DIMENSIONS SHOWN ARE APPROXIMATE. DO NOT SCALE THIS DRAWING. EXACT LOCATION OF ALL COMPONENTS, MANHOLES, TRUNCATIONS, ETC. SHALL BE DETERMINED BY ENGINEER.
 - FOR CLARITY, FOLLOWING EXTERNAL CONDUITS NOT SHOWN ON THIS DWG: 1, 2, 5, 10, 11, 12, 13, 14, 15, 16, 17, 18, 21, 30, 1, 2, 3, 4, OUTSIDE LIGHTING CONDUITS AND SIGNAL CABLE FROM DEEP WELL PIT.
 - UNIT HEATER DISCONNECT SWITCHES SHALL BE 3P-30A UNFUSED
 - GROUND NEUTRAL SHALL BE
 - RECEPTACLES IN LABORATORY RM 10 SHALL BE MTD 6" ABOVE COUNTER TOPS.
 - CARRY EQUIPMENT GROUND CONDUCTOR TO ALL 460 V. EQUIPMENT
 - ALL UNIT HEATERS IN CONTROL BLDG. WILL BE FURNISHED WITHOUT INTERNAL CONTROL THERMOSTATS.



PANEL LPI SCHEDULE

CKT FOR	BREAKER POLE/AMP	VOLT	KW
1	LTG RM 10	120/208	1.0
2	LTG RM 03	120	1.2
3	LTG RM 10	120	1.0
4	LTG RM 05, 06, 09	120	1.0
5	LTG RM 10	120	1.0
6	LTG EXT DOORS	120	1.8
7	HTG RM 03, 10	208	1.0
8	HTG RM 04, 08	208	2.8
9	HTG CORRIDOR 01	208	2.0
10	HTG RM 04	208	2.8
11	RECEP RM 01, 10	120	1.2
12	RECEP RM 02, 10	120	1.0
13	RECEP RM 03, 04	120	1.0
14	RECEP RM 04, 05, 06	120	1.2
15	RECEP RM 07, 08	120	1.0
16	RECEP RM 02	120	1.0
17	5/10 LTG	120	1.0
18	RECEP RM 10	120	1.0
19	SPARE		
20	SPARE		

PANEL LP2 SCHEDULE

CKT FOR	BREAKER POLE/AMP	VOLT	KW
1	LTG RM 04	120/208	1.0
2	LTG RM 08	120	1.6
3	LTG RM 04	120	1.5
4	LTG RM 07	120	1.0
5	LTG CORRIDOR 01	120	1.0
6	LTG RM 02	120	1.8
7	DOOR OPER. 1/2 HP	120	1.0
8	LTG DRIVEWAY	120	1.0
9	LTG DRIVEWAY	120	1.0
10	LTG PARKING AREA	120	1.4
11	LTG DRIVEWAY	120	1.4
12	CONTROL TRANS	120	1.5
13	SPARE		
14	SPARE		

PANEL NVD SCHEDULE

CKT FOR	BREAKER POLE/AMP	VOLT	KW
1	EXH FAN #3 M21-1/2 HP	208	1.5
2	UH-2-10KW RM 08	480V	10.0
3	UH-2-10KW RM 07	480V	10.0
4	UH-2-10KW TRANS	480V	11.5
5	UH-2-10KW TRANS	480V	11.5
6	UH-2-10KW TRANS	480V	11.5
7	UH-2-10KW TRANS	480V	11.5
8	UH-2-10KW TRANS	480V	11.5
9	UH-2-10KW TRANS	480V	11.5
10	UH-2-10KW TRANS	480V	11.5
11	UH-2-10KW TRANS	480V	11.5
12	UH-2-10KW TRANS	480V	11.5
13	UH-2-10KW TRANS	480V	11.5
14	UH-2-10KW TRANS	480V	11.5
15	UH-2-10KW TRANS	480V	11.5
16	UH-2-10KW TRANS	480V	11.5
17	UH-2-10KW TRANS	480V	11.5
18	UH-2-10KW TRANS	480V	11.5
19	UH-2-10KW TRANS	480V	11.5
20	UH-2-10KW TRANS	480V	11.5
21	UH-2-10KW TRANS	480V	11.5
22	UH-2-10KW TRANS	480V	11.5
23	UH-2-10KW TRANS	480V	11.5
24	UH-2-10KW TRANS	480V	11.5
25	UH-2-10KW TRANS	480V	11.5
26	UH-2-10KW TRANS	480V	11.5
27	UH-2-10KW TRANS	480V	11.5
28	UH-2-10KW TRANS	480V	11.5
29	UH-2-10KW TRANS	480V	11.5
30	UH-2-10KW TRANS	480V	11.5
31	UH-2-10KW TRANS	480V	11.5
32	UH-2-10KW TRANS	480V	11.5
33	UH-2-10KW TRANS	480V	11.5
34	UH-2-10KW TRANS	480V	11.5
35	UH-2-10KW TRANS	480V	11.5
36	UH-2-10KW TRANS	480V	11.5
37	UH-2-10KW TRANS	480V	11.5
38	UH-2-10KW TRANS	480V	11.5
39	UH-2-10KW TRANS	480V	11.5
40	UH-2-10KW TRANS	480V	11.5
41	UH-2-10KW TRANS	480V	11.5
42	UH-2-10KW TRANS	480V	11.5
43	UH-2-10KW TRANS	480V	11.5
44	UH-2-10KW TRANS	480V	11.5
45	UH-2-10KW TRANS	480V	11.5
46	UH-2-10KW TRANS	480V	11.5
47	UH-2-10KW TRANS	480V	11.5
48	UH-2-10KW TRANS	480V	11.5
49	UH-2-10KW TRANS	480V	11.5
50	UH-2-10KW TRANS	480V	11.5
51	UH-2-10KW TRANS	480V	11.5
52	UH-2-10KW TRANS	480V	11.5
53	UH-2-10KW TRANS	480V	11.5
54	UH-2-10KW TRANS	480V	11.5
55	UH-2-10KW TRANS	480V	11.5
56	UH-2-10KW TRANS	480V	11.5
57	UH-2-10KW TRANS	480V	11.5
58	UH-2-10KW TRANS	480V	11.5
59	UH-2-10KW TRANS	480V	11.5
60	UH-2-10KW TRANS	480V	11.5
61	UH-2-10KW TRANS	480V	11.5
62	UH-2-10KW TRANS	480V	11.5
63	UH-2-10KW TRANS	480V	11.5
64	UH-2-10KW TRANS	480V	11.5
65	UH-2-10KW TRANS	480V	11.5
66	UH-2-10KW TRANS	480V	11.5
67	UH-2-10KW TRANS	480V	11.5
68	UH-2-10KW TRANS	480V	11.5
69	UH-2-10KW TRANS	480V	11.5
70	UH-2-10KW TRANS	480V	11.5
71	UH-2-10KW TRANS	480V	11.5
72	UH-2-10KW TRANS	480V	11.5
73	UH-2-10KW TRANS	480V	11.5
74	UH-2-10KW TRANS	480V	11.5
75	UH-2-10KW TRANS	480V	11.5
76	UH-2-10KW TRANS	480V	11.5
77	UH-2-10KW TRANS	480V	11.5
78	UH-2-10KW TRANS	480V	11.5
79	UH-2-10KW TRANS	480V	11.5
80	UH-2-10KW TRANS	480V	11.5
81	UH-2-10KW TRANS	480V	11.5
82	UH-2-10KW TRANS	480V	11.5
83	UH-2-10KW TRANS	480V	11.5
84	UH-2-10KW TRANS	480V	11.5
85	UH-2-10KW TRANS	480V	11.5
86	UH-2-10KW TRANS	480V	11.5
87	UH-2-10KW TRANS	480V	11.5
88	UH-2-10KW TRANS	480V	11.5
89	UH-2-10KW TRANS	480V	11.5
90	UH-2-10KW TRANS	480V	11.5
91	UH-2-10KW TRANS	480V	11.5
92	UH-2-10KW TRANS	480V	11.5
93	UH-2-10KW TRANS	480V	11.5
94	UH-2-10KW TRANS	480V	11.5
95	UH-2-10KW TRANS	480V	11.5
96	UH-2-10KW TRANS	480V	11.5
97	UH-2-10KW TRANS	480V	11.5
98	UH-2-10KW TRANS	480V	11.5
99	UH-2-10KW TRANS	480V	11.5
100	UH-2-10KW TRANS	480V	11.5

PANEL MVD SCHEDULE

CKT FOR	BREAKER POLE/AMP	VOLT	KW
1	UH-2-10KW RM 08	480V	10.0
2	UH-2-10KW RM 07	480V	10.0
3	UH-2-10KW TRANS	480V	11.5
4	UH-2-10KW TRANS	480V	11.5
5	UH-2-10KW TRANS	480V	11.5
6	UH-2-10KW TRANS	480V	11.5
7	UH-2-10KW TRANS	480V	11.5
8	UH-2-10KW TRANS	480V	11.5
9	UH-2-10KW TRANS	480V	11.5
10	UH-2-10KW TRANS	480V	11.5
11	UH-2-10KW TRANS	480V	11.5
12	UH-2-10KW TRANS	480V	11.5
13	UH-2-10KW TRANS	480V	11.5
14	UH-2-10KW TRANS	480V	11.5
15	UH-2-10KW TRANS	480V	11.5
16	UH-2-10KW TRANS	480V	11.5
17	UH-2-10KW TRANS	480V	11.5
18	UH-2-10KW TRANS	480V	11.5
19	UH-2-10KW TRANS	480V	11.5
20	UH-2-10KW TRANS	480V	11.5
21	UH-2-10KW TRANS	480V	11.5
22	UH-2-10KW TRANS	480V	11.5
23	UH-2-10KW TRANS	480V	11.5
24	UH-2-10KW TRANS	480V	11.5
25	UH-2-10KW TRANS	480V	11.5
26	UH-2-10KW TRANS	480V	11.5
27	UH-2-10KW TRANS	480V	11.5
28	UH-2-10KW TRANS	480V	11.5
29	UH-2-10KW TRANS	480V	11.5
30	UH-2-10KW TRANS	480V	11.5
31	UH-2-10KW TRANS	480V	11.5
32	UH-2-10KW TRANS	480V	11.5
33	UH-2-10KW TRANS	480V	11.5
34	UH-2-10KW TRANS	480V	11.5
35	UH-2-10KW TRANS	480V	11.5
36	UH-2-10KW TRANS	480V	11.5
37	UH-2-10KW TRANS	480V	11.5
38	UH-2-10KW TRANS	480V	11.5
39	UH-2-10KW TRANS	480V	11.5
40	UH-2-10KW TRANS	480V	11.5
41	UH-2-10KW TRANS	480V	11.5
42	UH-2-10KW TRANS	480V	11.5
43	UH-2-10KW TRANS	480V	11.5
44	UH-2-10KW TRANS	480V	11.5
45	UH-2-10KW TRANS	480V	11.5
46	UH-2-10KW TRANS	480V	11.5
47	UH-2-10KW TRANS	480V	11.5
48	UH-2-10KW TRANS	480V	11.5
49	UH-2-10KW TRANS	480V	11.5
50	UH-2-10KW TRANS	480V	11.5
51	UH-2-10KW TRANS	480V	11.5
52	UH-2-10KW TRANS	480V	11.5
53	UH-2-10KW TRANS	480V	11.5
54	UH-2-10KW TRANS	480V	11.5
55	UH-2-10KW TRANS	480V	11.5
56	UH-2-10KW TRANS	480V	11.5
57	UH-2-10KW TRANS	480V	11.5
58	UH-2-10KW TRANS	480V	11.5
59	UH-2-10KW TRANS	480V	11.5
60	UH-2-10KW TRANS	480V	11.5
61	UH-2-10KW TRANS	480V	11.5
62	UH-2-10KW TRANS	480V	11.5
63	UH-2-10KW TRANS	480V	11.5
64	UH-2-10KW TRANS	480V	11.5
65	UH-2-10KW TRANS	480V	11.5
66	UH-2-10KW TRANS	480V	11.5
67	UH-2-10KW TRANS	480V	11.5
68	UH-2-10KW TRANS	480V	11.5
69	UH-2-10KW TRANS	480V	11.5
70	UH-2-10KW TRANS	480V	11.5
71	UH-2-10KW TRANS	480V	11.5
72	UH-2-10KW TRANS	480V	11.5
73	UH-2-10KW TRANS	480V	11.5
74	UH-2-10KW TRANS	480V	11.5
75	UH-2-10KW TRANS	480V	11.5
76	UH-2-10KW TRANS	480V	11.5
77	UH-2-10KW TRANS	480V	11.5
78	UH-2-10KW TRANS	480V	11.5
79	UH-2-10KW TRANS	480V	11.5
80	UH-2-10KW TRANS	480V	11.5
81	UH-2-10KW TRANS	480V	11.5
82	UH-2-10KW TRANS	480V	11.5
83	UH-2-10KW TRANS	480V	11.5
84	UH-2-10KW TRANS	480V	11.5
85	UH-2-10KW TRANS	480V	11.5
86	UH-2-10KW TRANS	480V	11.5
87	UH-2-10KW TRANS	480V	11.5
88	UH-2-10KW TRANS	480V	11.5
89	UH-2-10KW TRANS	480V	11.5
90	UH-2-10KW TRANS	480V	11.5
91	UH-2-10KW TRANS	480V	11.5
92	UH-2-10KW TRANS	480V	11.5
93	UH-2-10KW TRANS	480V	11.5
94	UH-2-10KW TRANS	480V	11.5
95	UH-2-10KW TRANS	480V	11.5
96	UH-2-10KW TRANS	480V	11.5
97	UH-2-10KW TRANS	480V	11.5
98	UH-2-10KW TRANS	480V	11.5
99	UH-2-10KW TRANS	480V	