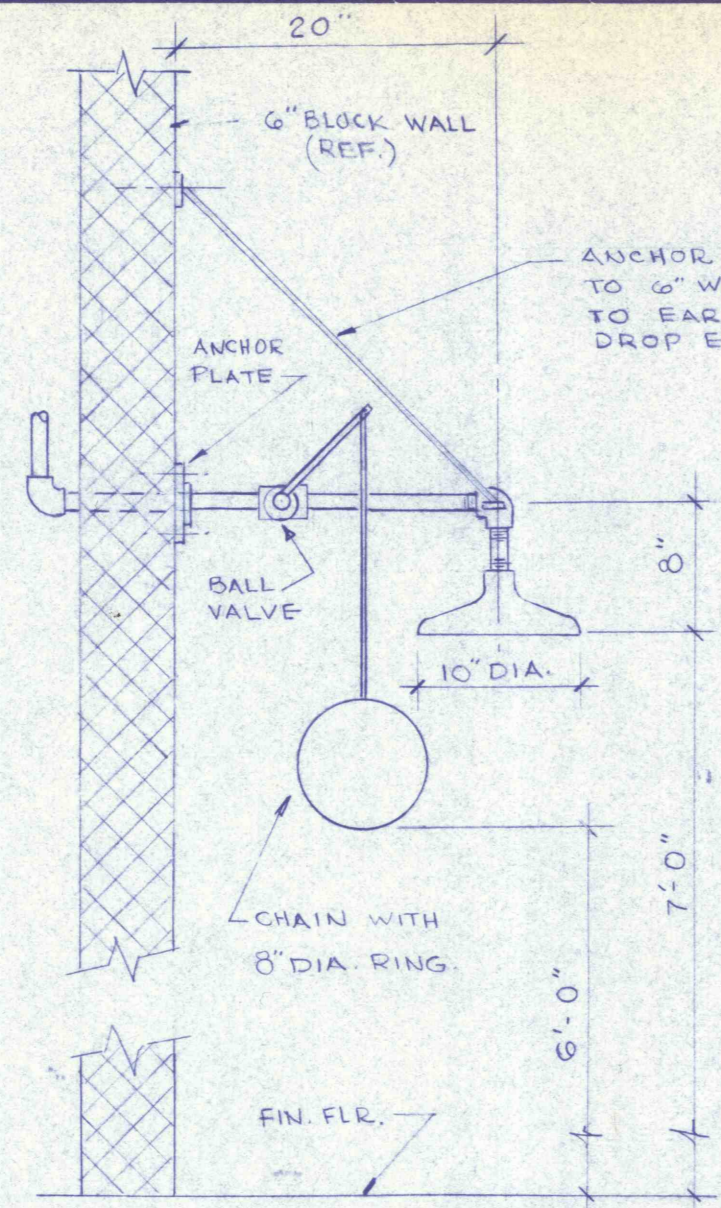
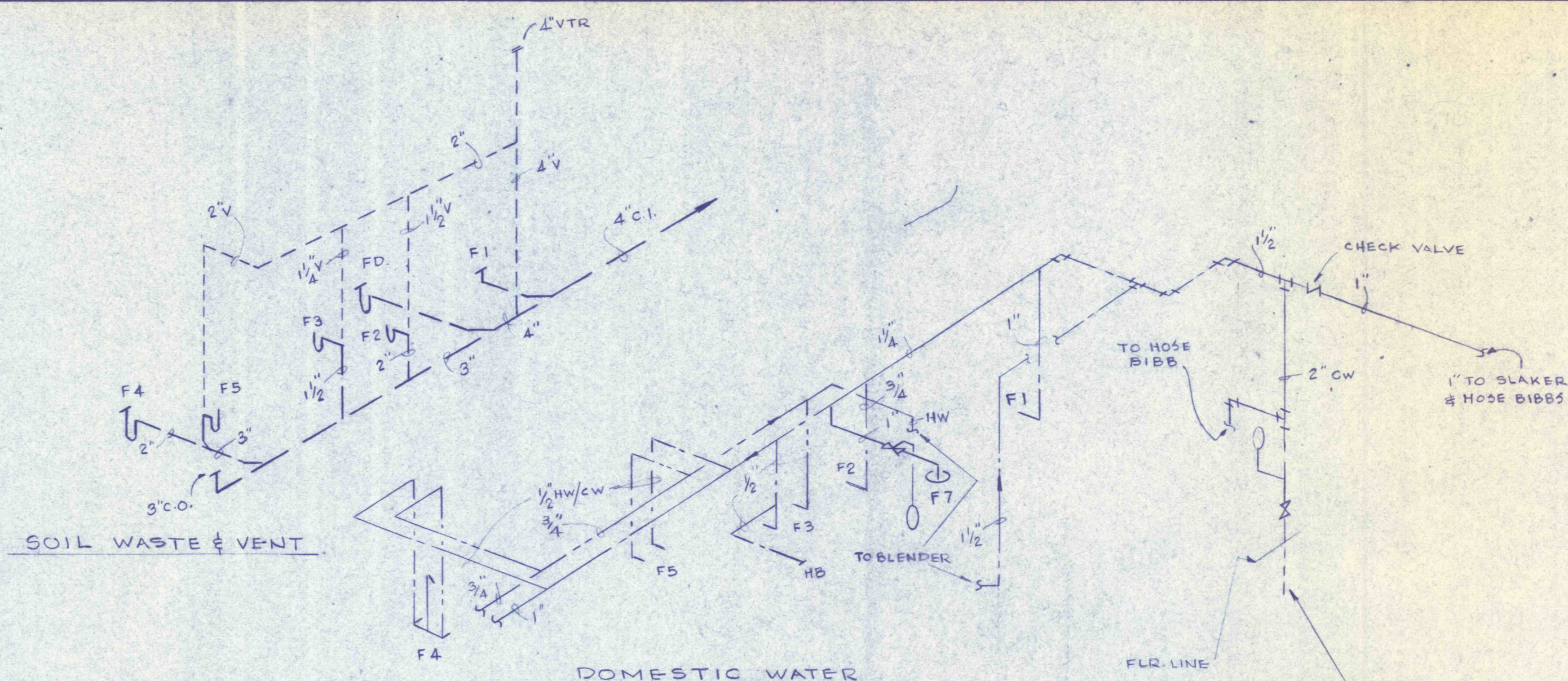


ELECTRIC WATER HEATER PIPING ARRST. NTS

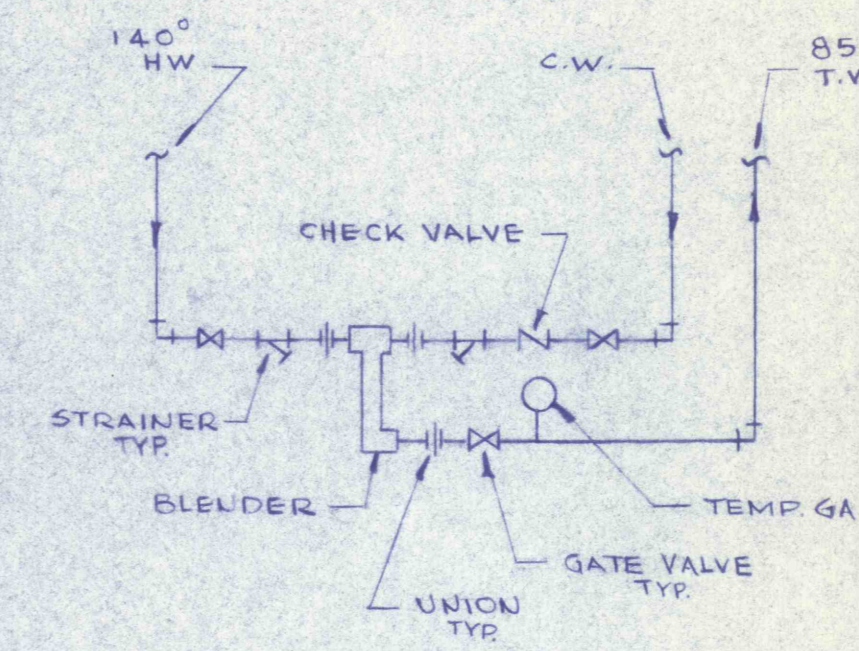


EMERGENCY SHOWER (F7) DETAIL SCALE: 1"=1'-0"



TOILET AREA RISER DIAGRAM

WATER SERVICE DETAIL



BLENDER PIPING ARRST.

PLUMBING FIXTURE SCHEDULE						
MARK	FIXTURE	CW.	H.W.	DRN.	V.	REMARKS
F1	WATER CLOSET	1 1/4"	-	4"	4"	W.H., F.V.
F2	URINAL	1"	-	2"	1 1/2"	W.H.
F3	LAVATORY	1/2"	1/2"	1 1/2"	1 1/4"	W.H.
F4	SHOWER	1/2"	1/2"	2"	2"	
F5	SERVICE SINK	1/2"	1/2"	3"	2"	
F6	WATER COOLER	1/2"	-	1 1/4"	1 1/4"	W.H.
F7	EMERGENCY SHOWER	1"	-	FL. DRN.	-	SEE DETAIL

ABBREVIATIONS

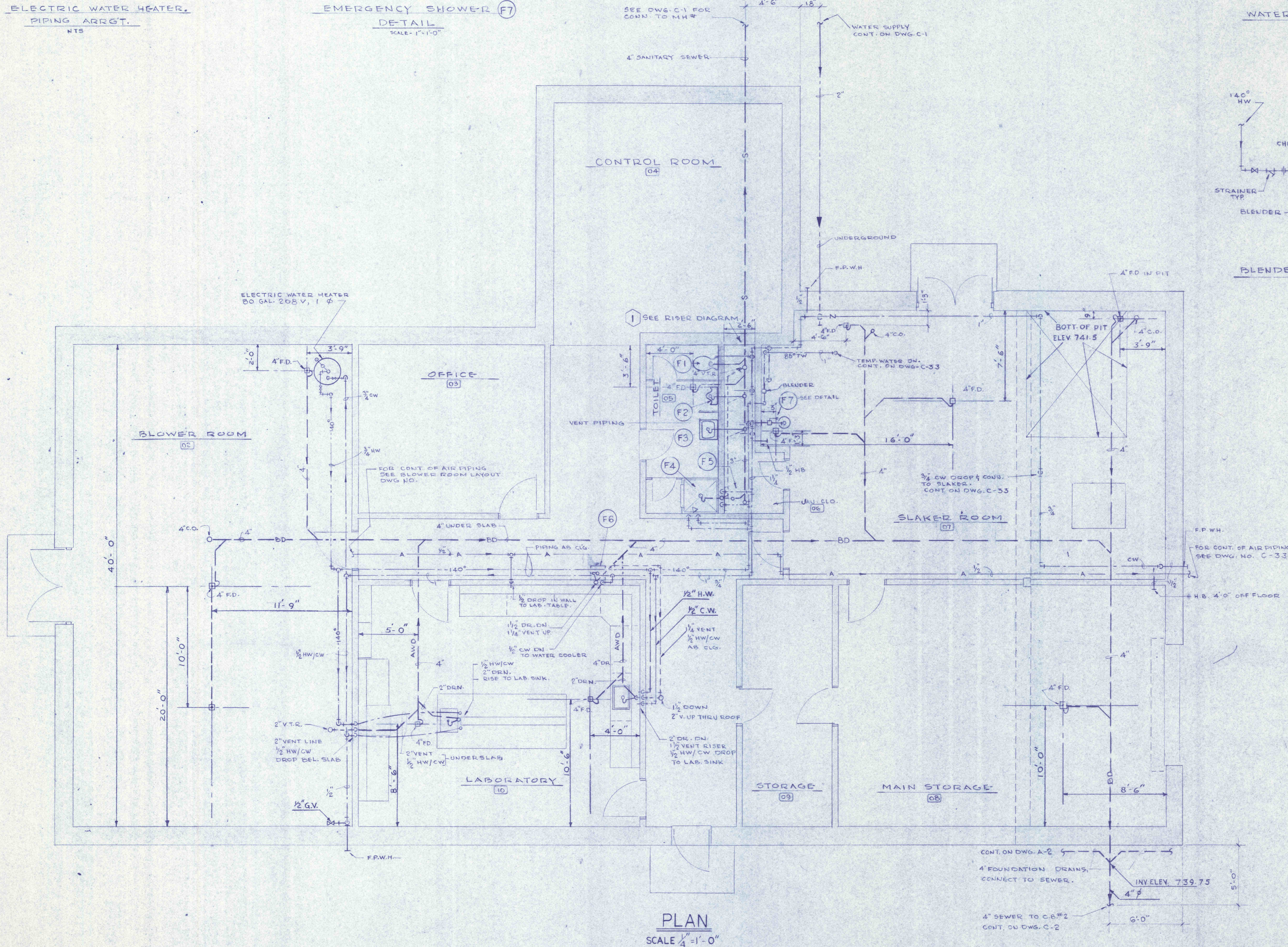
AB.	ABOVE	F.P.W.H.	FROST PROOF
A.W.D.	ACID WATER DRAIN	G.A.L.	GALLON
C.B.	CATCH BASIN	H.B.	HOSE BIBB
C.L.G.	CEILING	H.W.	HOT WATER
C.O.	CLEANOUT	M.H.	MANHOLE
CON.	CONNECTION	N.O.	NUMBER
C.W.	COLD WATER	T.W.	TEMPERED WATER
DET.	DETAIL	T.Y.P.	TYPICAL
DN.	DOWN	V.	VENT
DRN.	DRAIN	V.T.R.	VENT TO ROOF
DWG.	DRAWING	W.H.	WALL HUNG
F.D.	FLOOR DRAIN		
F.V.	FLUSH VALVE		

LEGEND

—S—	SANITARY SEWER
—BD—	BUILDING DRAIN
—C—	COLD WATER
—85°—	TEMPERED WATER
—140°—	HOT WATER
—A—	COMPRESSED AIR
—H—	HOSE BIBB OR WALL HYDRANT
—F—	FLOOR DRAIN
—T—	TRAP
—O—	CLEANOUT

GENERAL NOTES

- 1-ALL PIPING WHERE EXPOSED SHALL BE RUN BETWEEN STRUCTURAL TEES WHENEVER POSSIBLE.
- 2-ALL PIPING FOR TOILET AREA SHALL RUN CONCEALED IN CHASE WALL.
- 3-PROVIDE SWING JOINT CONNECTIONS ON ALL H.W. CONNECTIONS TO MAIN.
- 4-PIPING SHALL BE GRADED TO A COMMON LOW POINT OR POINTS WHERE A DRAIN VALVE SHALL BE INSTALLED.
- 5-ALL FLOORS TO SLOPE TO FLOOR DRAINS.
- 6-A.W.D. PIPING SHALL BE AS PER SPECIFICATIONS FOR ACID RESISTANT PIPING—AND SHALL EXTEND TO POINTS WHERE CONNECTION IS MADE AT THE (B.D.) BUILDING DRAIN MAIN.
- 7-DIELECTRIC FITTINGS SHALL BE PROVIDED ON ALL CONNECTIONS OF DISSIMILAR METALS.
- 8 ALL FIXTURES IN TOILET ROOM TO BE WALL HUNG



PLAN SCALE 1/4"=1'-0"



REVISIONS	
CONTROL BUILDING PLUMBING	
CONSTRUCTION OF TREATMENT FACILITIES FOR ACID MINE DRAINAGE RAUSCH CREEK WATER SHED SCHUYLKILL COUNTY PENNSYLVANIA	JOB NO: 6805 DATE: NOV. 1969 SCALE: NOTED DRAWN: APPROVED: T.H. R.J.L.
ANTHRACITE RESEARCH & DEVELOPMENT CO. INC. consulting engineers POTTSVILLE PENNSYLVANIA TAMAQUA	DRAWING NO: P-1