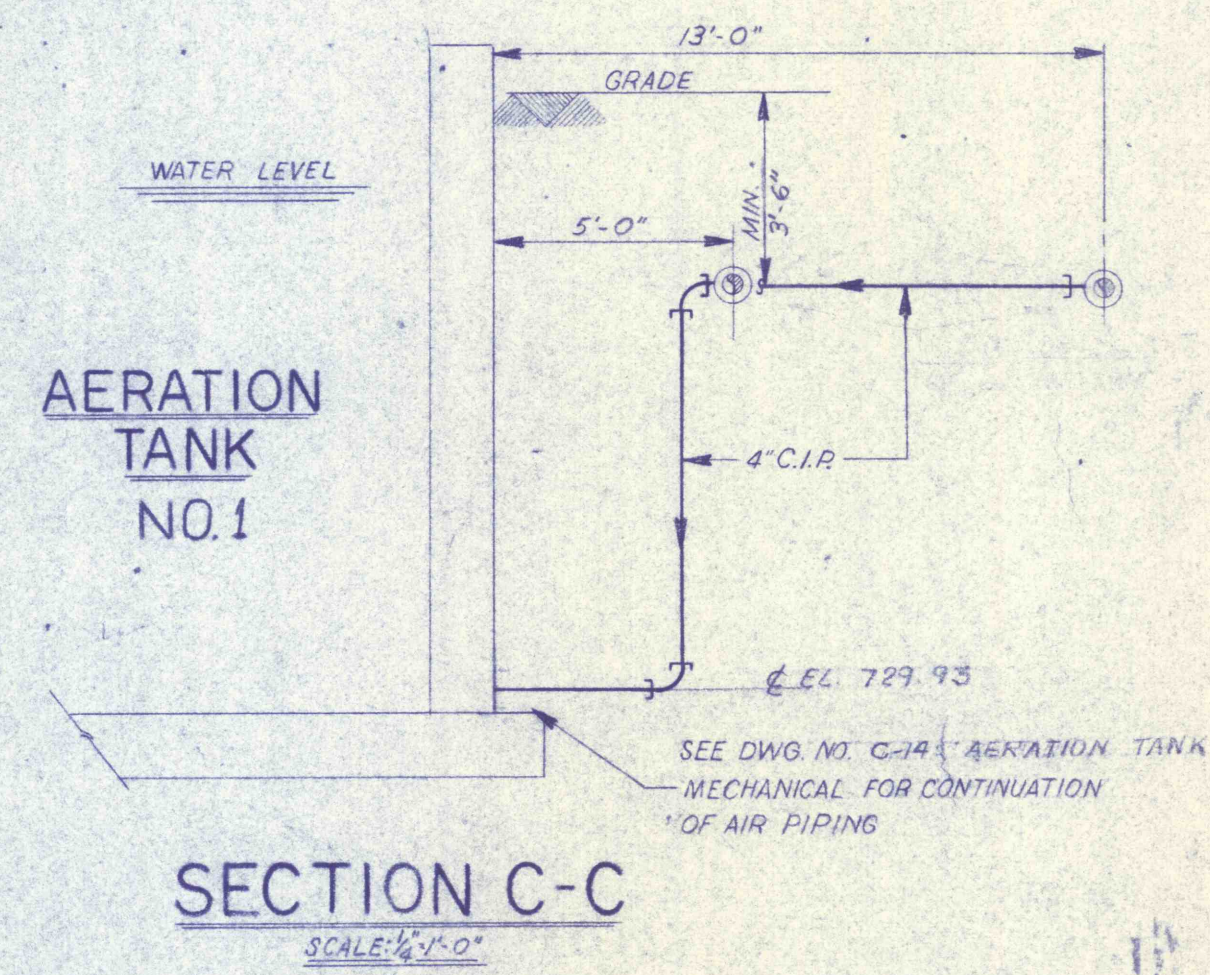
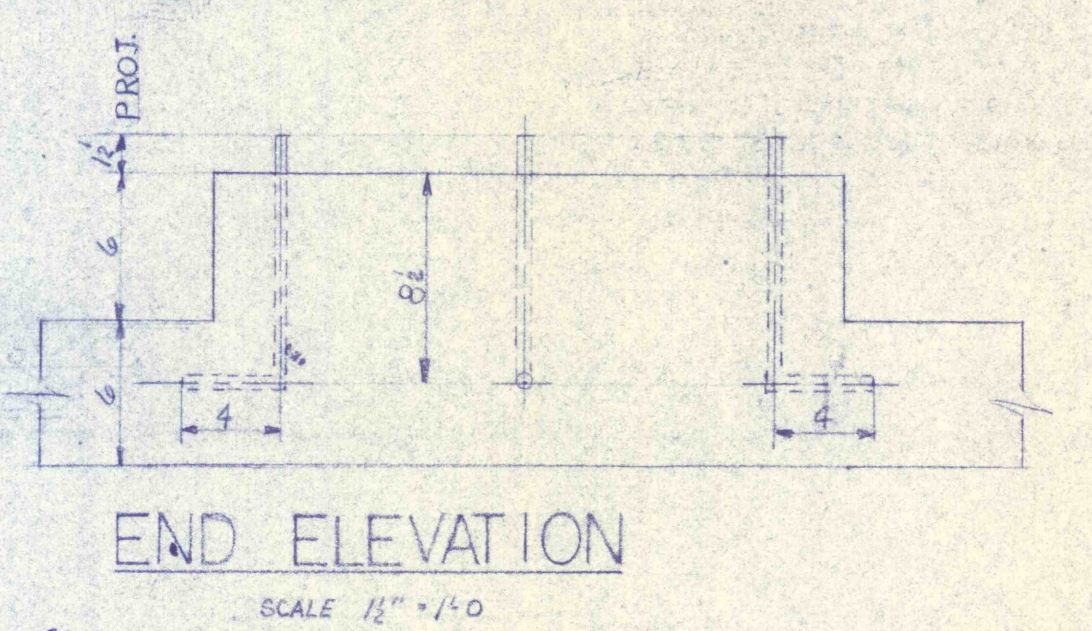
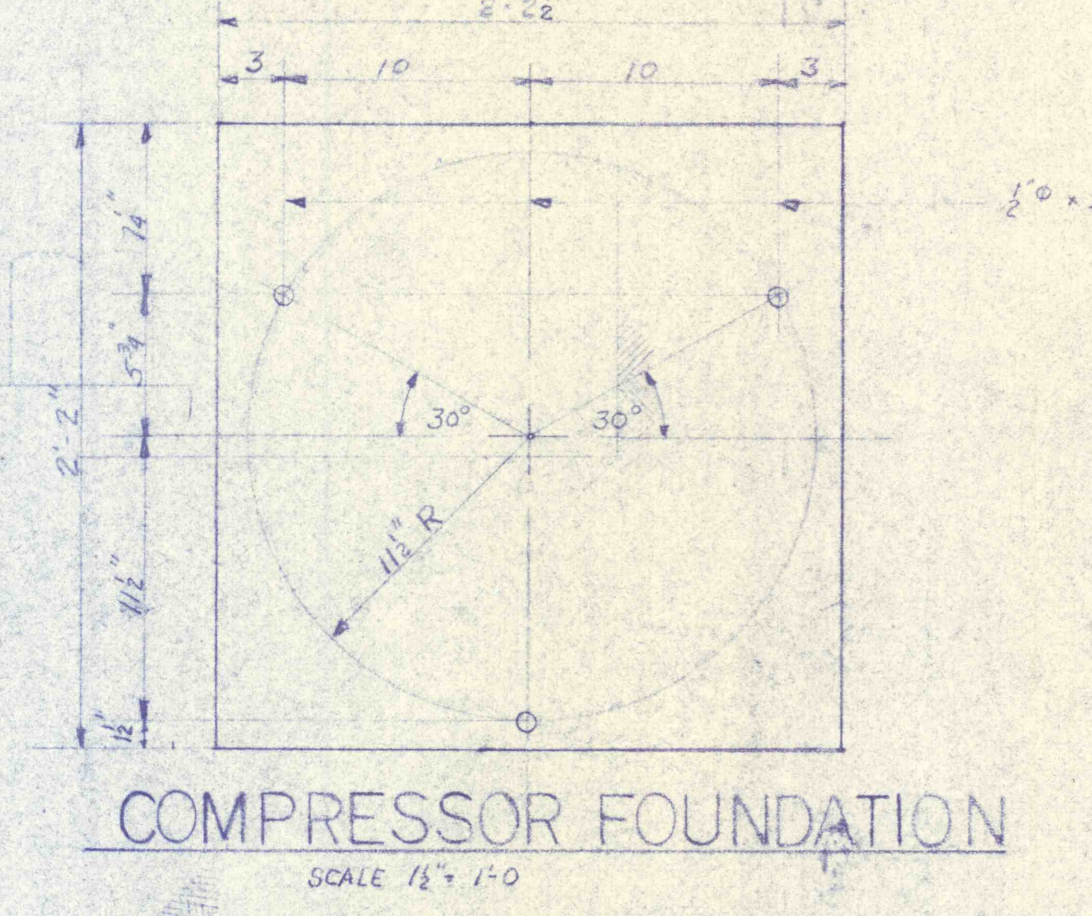
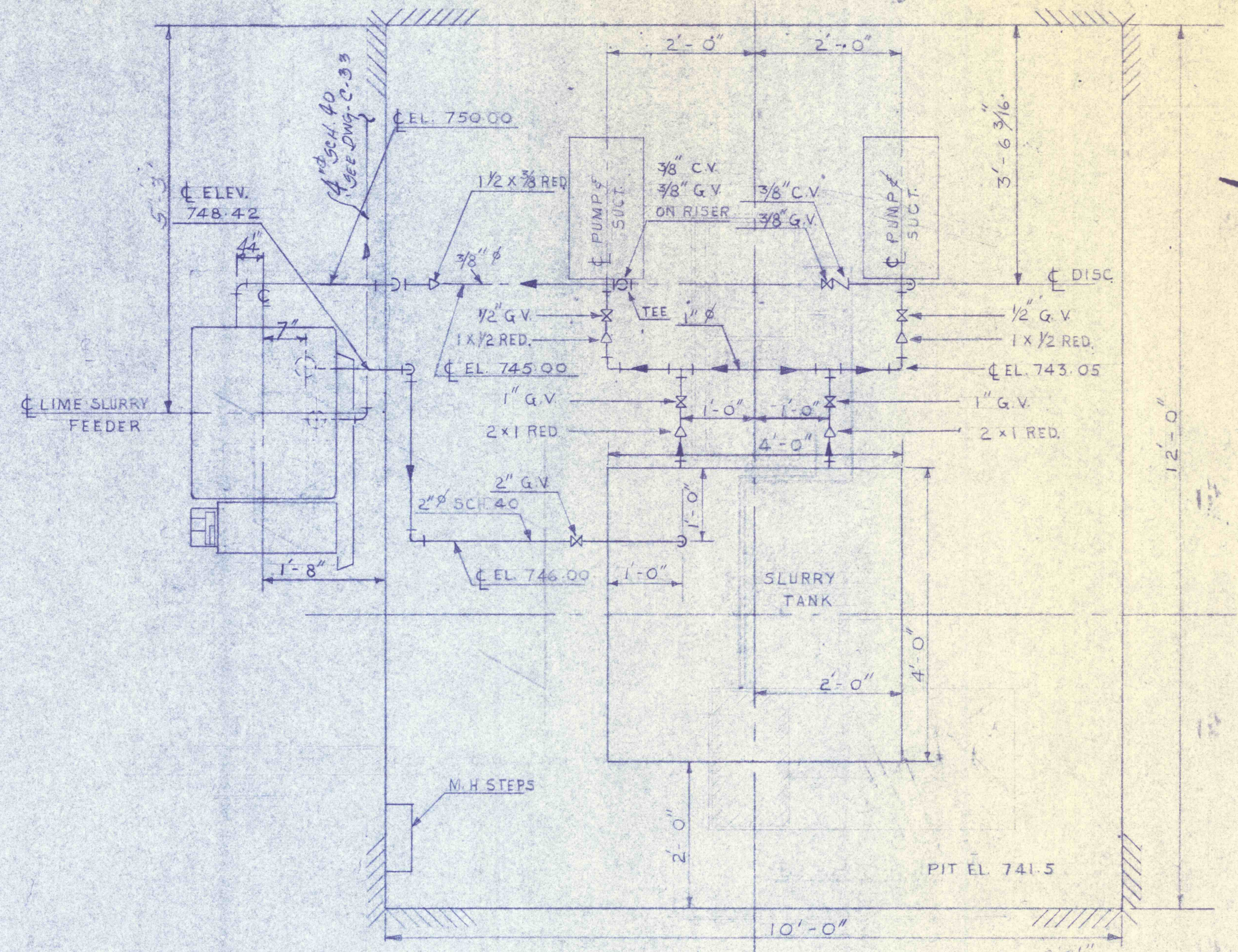


GENERAL NOTE:
1 WATER-TIGHT FLANGED SLEEVE
FOR ALL PIPES THRU WALLS
OR SLABS BELOW WATER LEVEL



REVISIONS	
BLOWER ROOM PLAN & DETAILS	
CONSTRUCTION OF TREATMENT FACILITIES FOR ACID MINE DRAINAGE RAUSH CREEK WATERSHED SCHUYLKILL COUNTY PENNSYLVANIA	
JOB NO: 6805	DATE: NOV. 1969
SCALE: NOTED	DRAWN: J. S. N.
APPROVED: H. R. J. J.	DRAWING NO:
ANTHRACITE RESEARCH & DEVELOPMENT CO. INC. consulting engineers	
POTTSVILLE PENNSYLVANIA	TAMAQUA
C-34	

