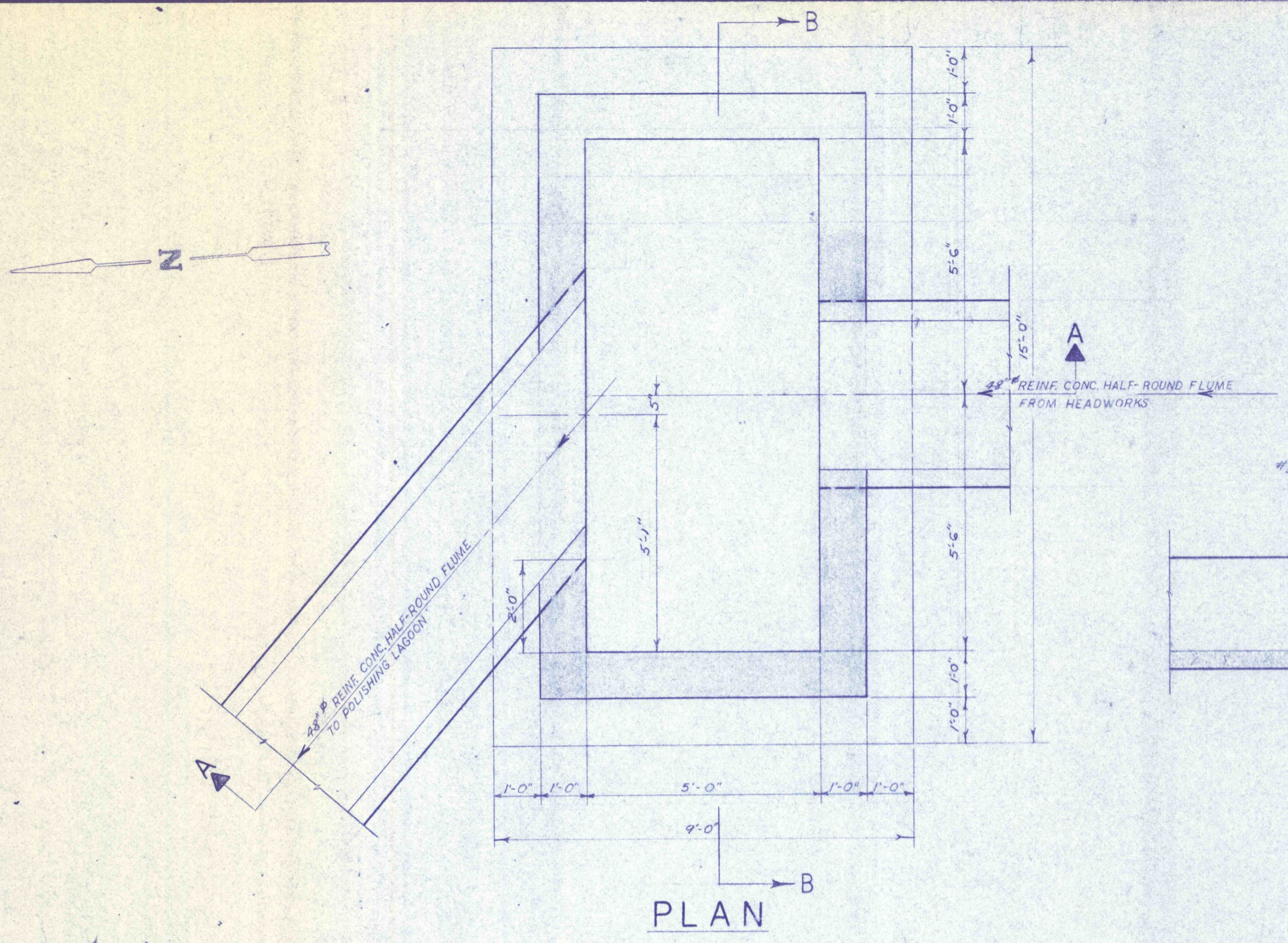
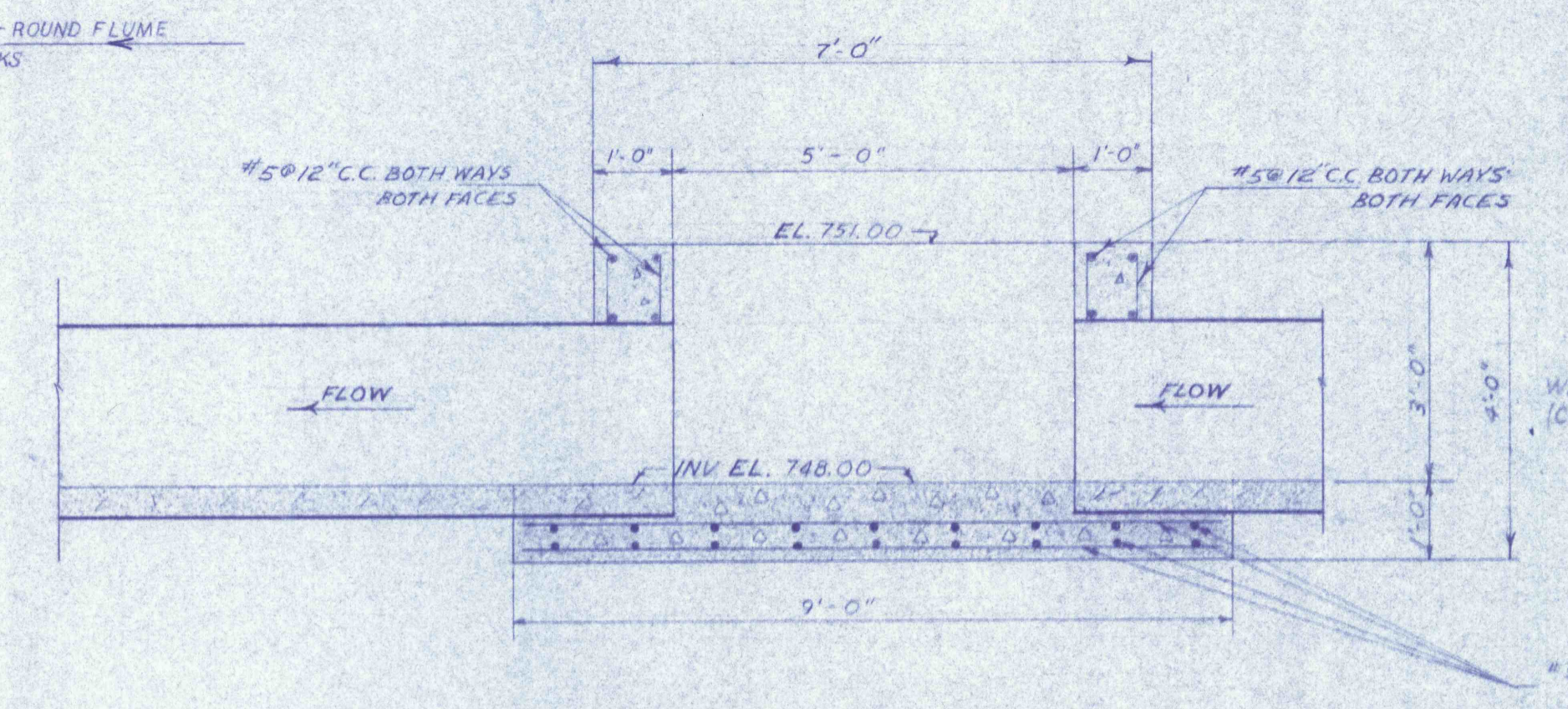


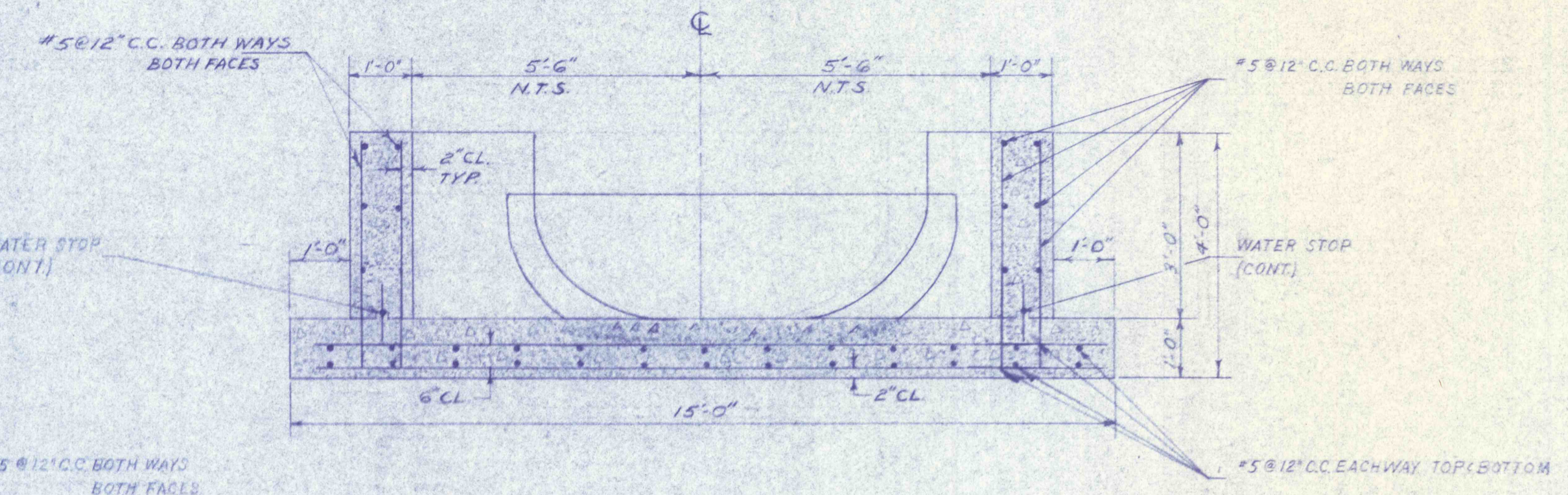
**GENERAL NOTES**  
 1. ALL CONSTRUCTION JOINTS BELOW WATER LEVEL TO HAVE 9" WATER STOPS CONTINUOUS.  
 2. REFER TO DWG. C-1 FOR LOCATION OF ALL INTERCEPTOR BOXES ON THIS SHEET.



PLAN

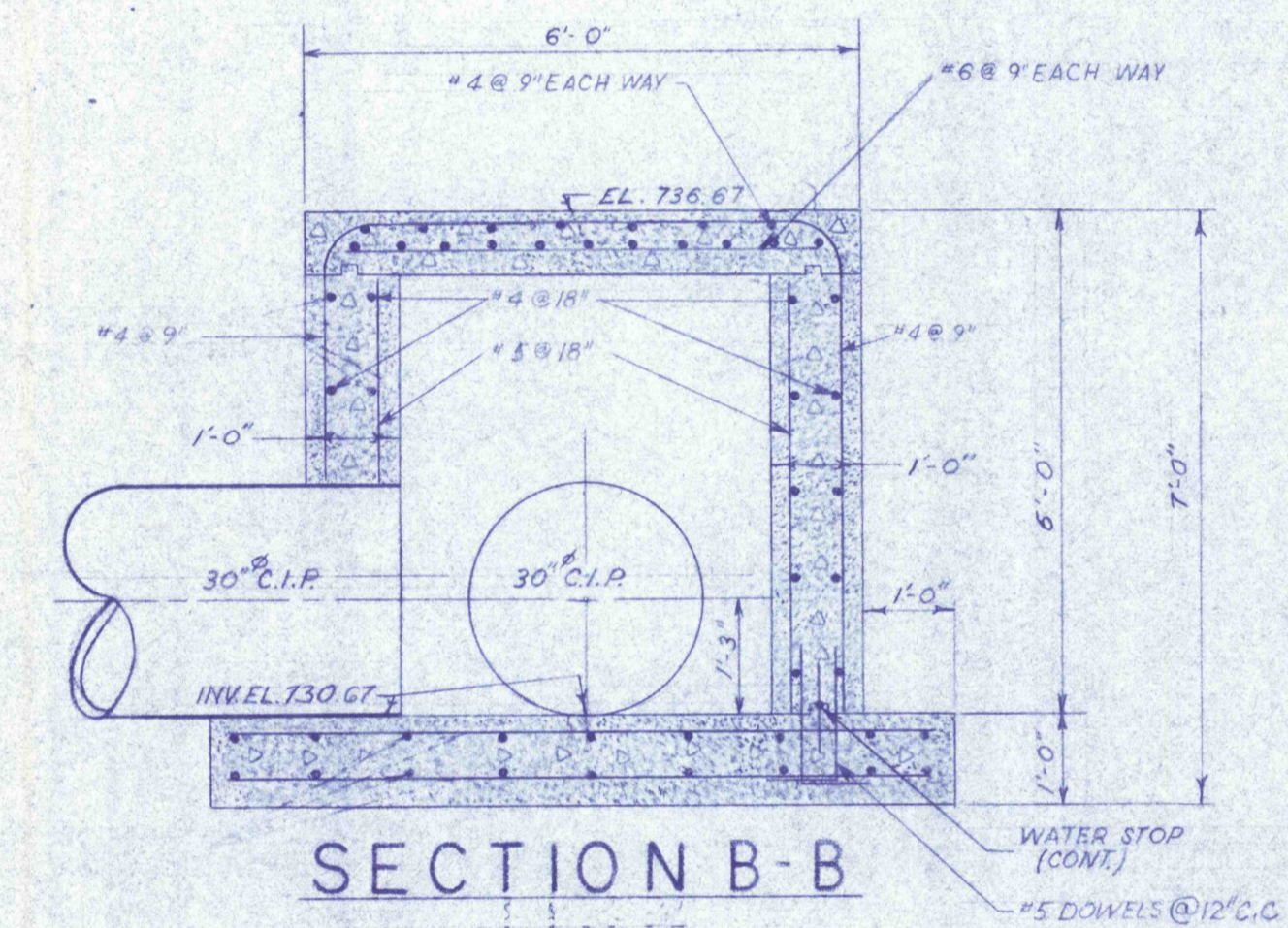


SECTION A-A

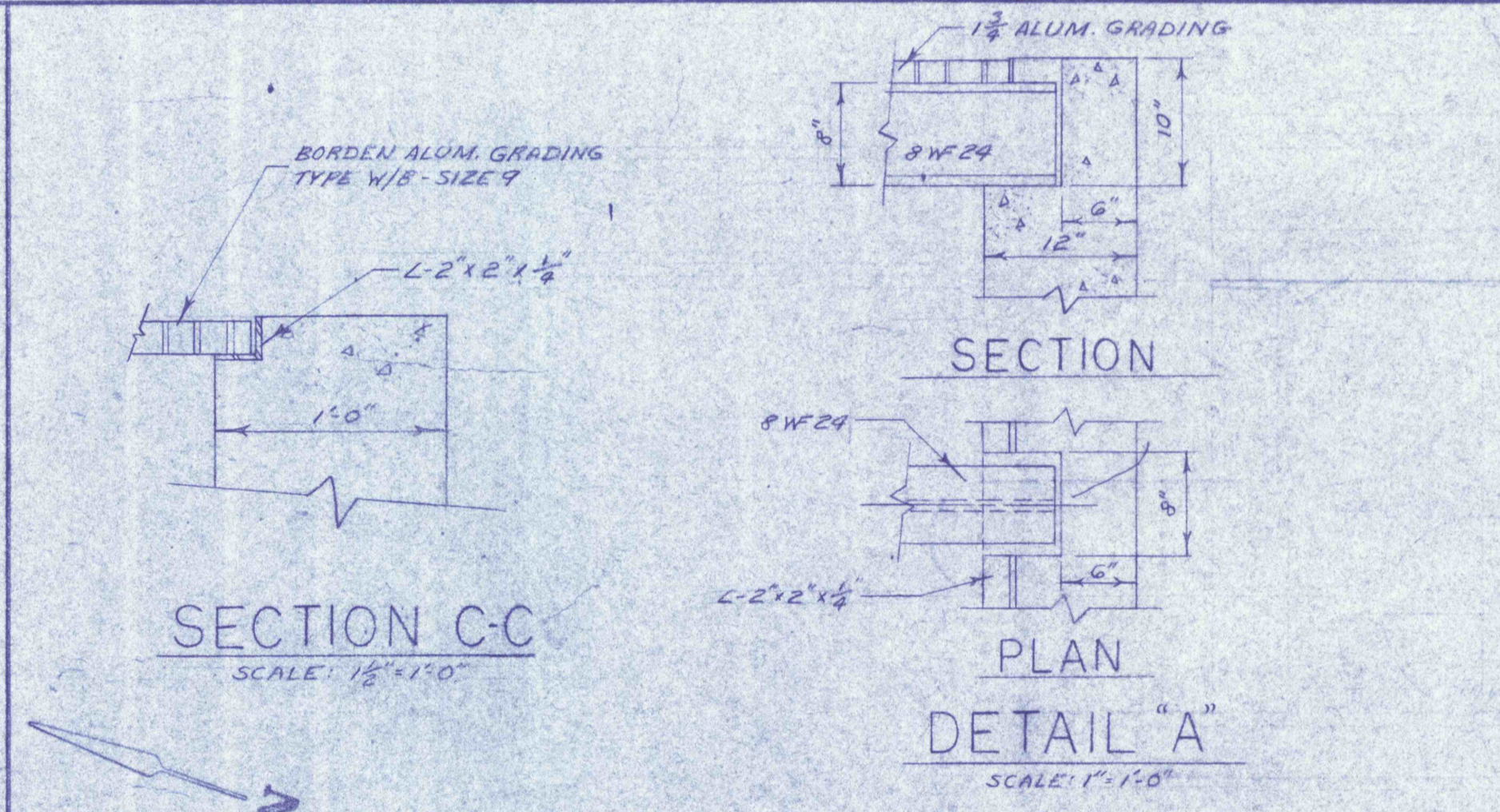


SECTION B-B

INTERCEPTOR BOX NO.5-DWG. C-1  
 SCALE: 1/2"=1'-0"

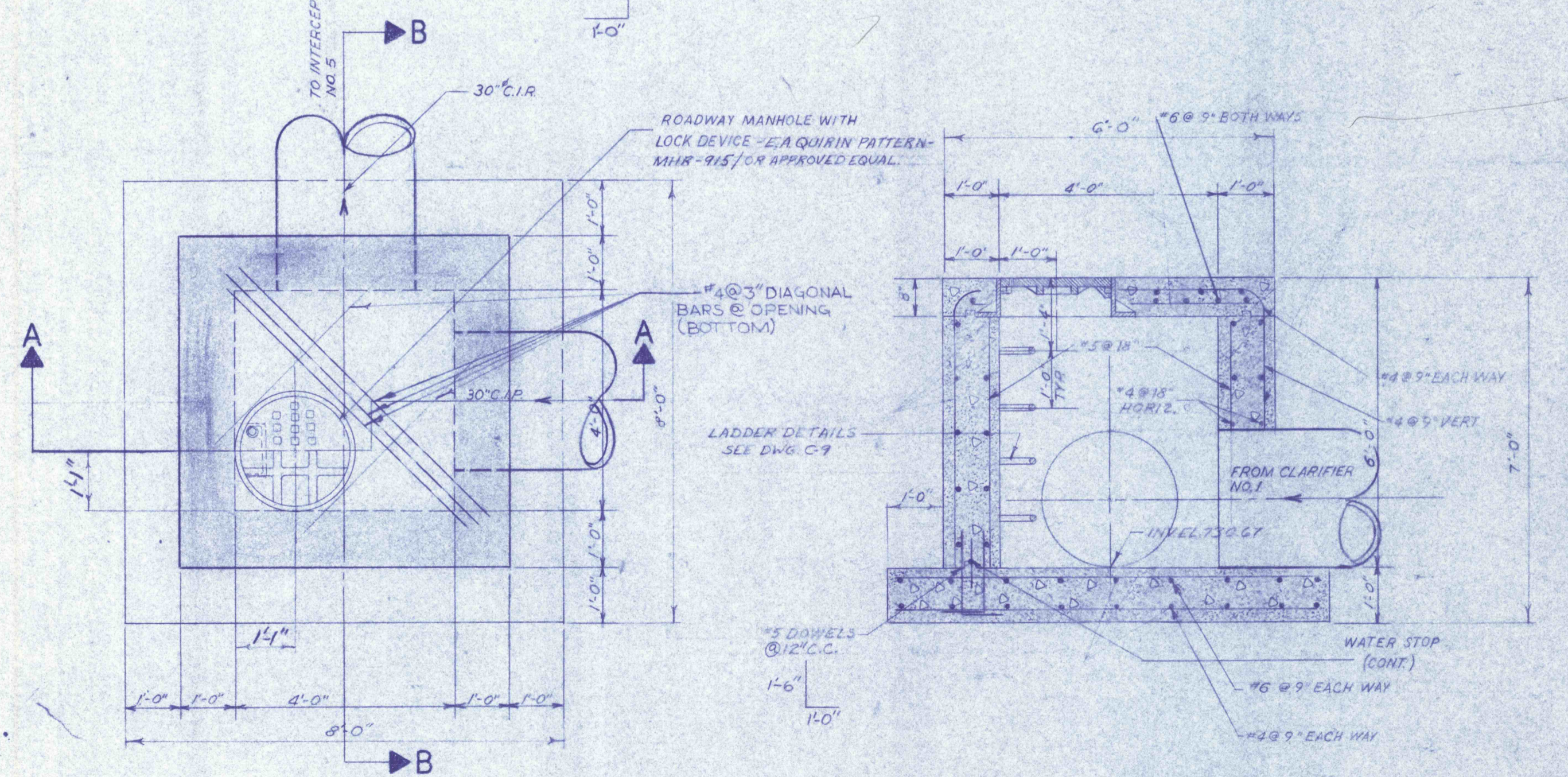


SECTION B-B



SECTION C-C

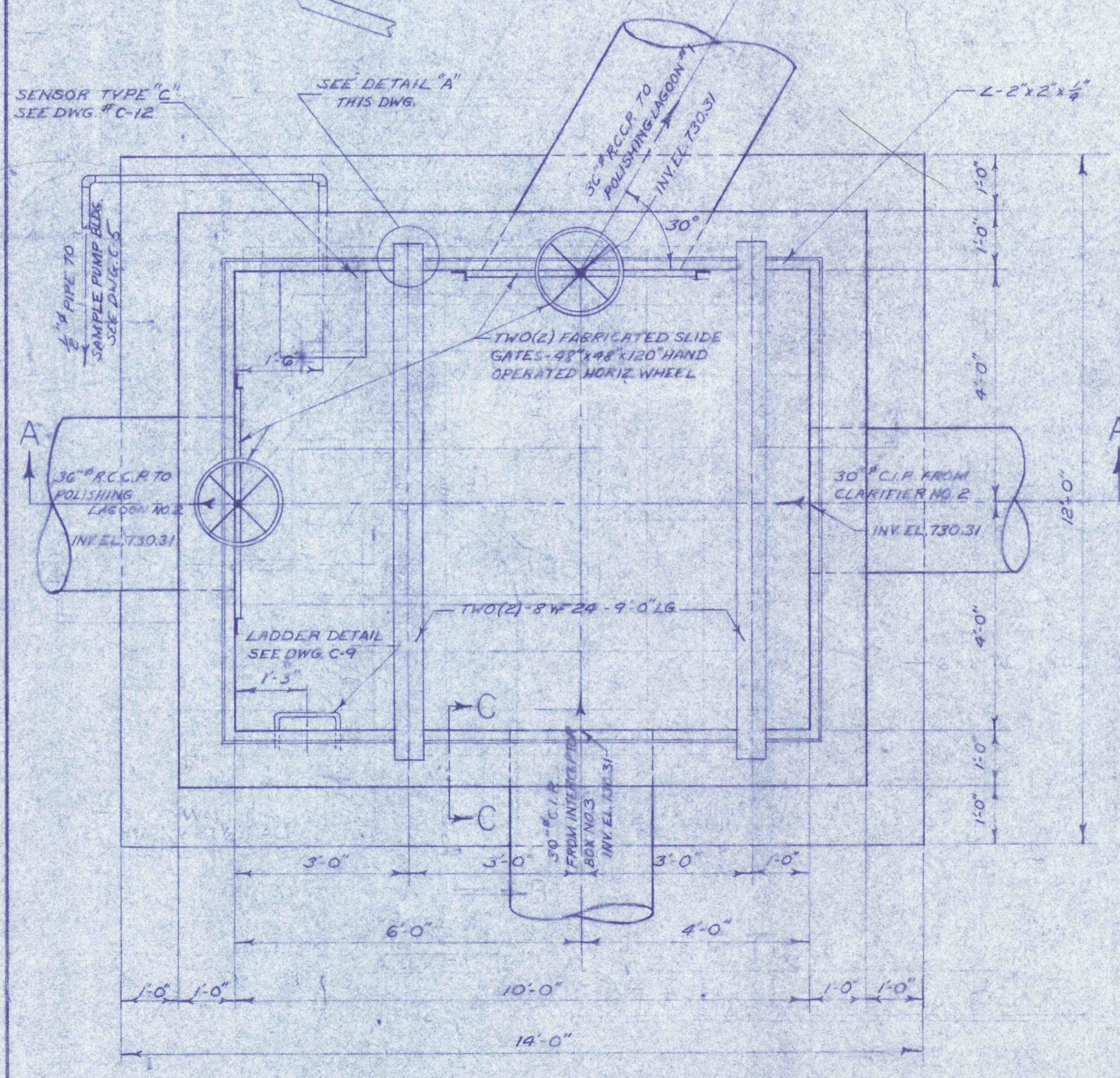
PLAN DETAIL A



PLAN

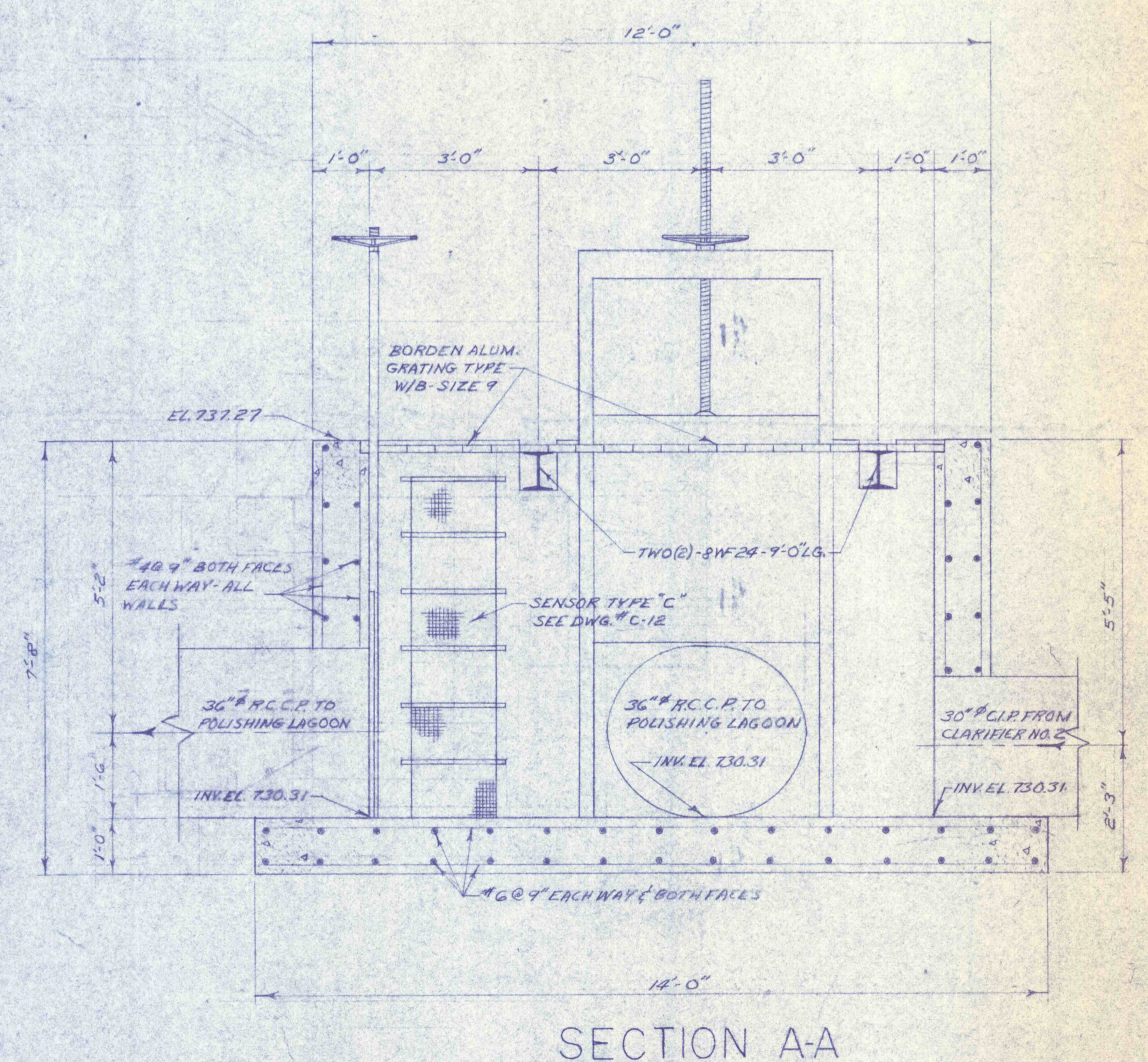
SECTION A-A

INTERCEPTOR BOX NO.3-DWG. C-1 & C-5  
 SCALE: 1/2"=1'-0"



PLAN

INTERCEPTOR BOX NO.4  
 DWG. C-1 & C-5  
 SCALE: 1/2"=1'-0"

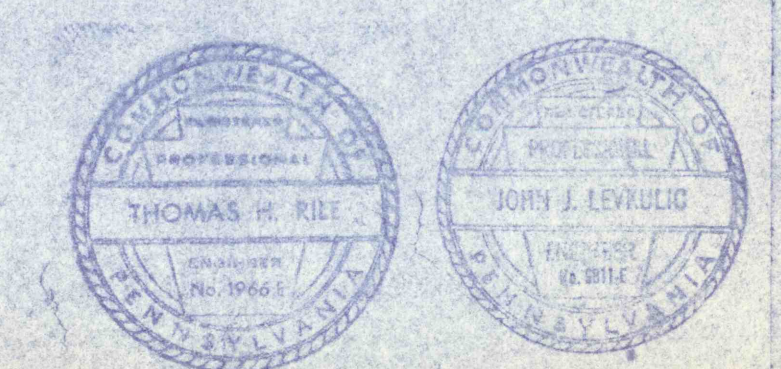


SECTION A-A

**CONSTRUCTION DETAILS-INTERCEPTORS**

CONSTRUCTION OF TREATMENT FACILITIES FOR ACID MINE DRAINAGE  
 RAUSCH CREEK WATERSHED  
 SCHUYLKILL COUNTY PENNSYLVANIA

JOB NO: 6805  
 DATE: NOV. 1969  
 SCALE: NOTED  
 DRAWN: J.S.N.  
 APPROVED: T.H.R./J.L.L.



ANTHRACITE RESEARCH & DEVELOPMENT CO. INC.  
 consulting engineers  
 POTTSVILLE PENNSYLVANIA TAMAGUA

DRAWING NO: **C-23**